

# Key Personnel Losses Hamper Lion Matmen

By IRA MILLER  
Assistant Sports Editor

It was not a merry holiday season for Charlie Speldel and his Penn State wrestling squad. The Lions, expected to be one of the top contenders for Eastern honors this winter, dropped their first two meets and now face the prospect of an uphill fight the rest of the way.

State, beaten 16-11 at Michigan and 25-6 at Lehigh, has been hampered by a loss of key personnel since before the season started and continuing right up to now.

Losses Started Early

Even before pre-season drills had progressed very far, the Nittankees knew they would be without the services of Bob Haney, unbeaten at 130 last year, and Dave Thiel, regular at 137 most of last season. Both

had announced their intention not to return—Haney because he had lost his scholarship by going on academic probation last spring; Thiel to concentrate on lacrosse.

The next loss was 191-pounder-heavyweight Ed Pohland, who was suspended from the University near the end of the fall term.

And this week academics claimed two more victims—Tom Balent and Dick Dewalt. Balent, third in the East at 123 and second in the NCAA's at 115 last year, was dropped from the University, while Dewalt, a sophomore and former PIAA champ, was placed on academic probation.

**Tough Schedule Ahead**

So now the Lion matmen must go through the remainder of what is probably their toughest schedule ever with just four lettermen left—captain George Edwards (147), Marty Strayer (167), Mike Gill (177) and Dick Walker (181).

State's opening setback at the hands of Michigan was no cause for alarm because the Lions gave a good account of

themselves against the defending Big 10 kingpins. But the ensuing thumping against Lehigh with the loss of two more regulars is more than adequate cause for concern.

Only Strayer has not tasted defeat in the Lions' first two meets. The defending Eastern 167-pound runner-up overcame a 5-0 deficit to gain a draw at Michigan, then blanked Lehigh's Bill Lachenmayr, 5-0.

**5 Wins in 2 Meets**

Balent, Mark Piven (130) and Edwards were the Lion victors against Michigan while only Strayer and Dewalt were able to pick up points in the Lehigh meet.

Balent decided Ralph Bahna, 12-10; Piven edged Bill Johannesen, 5-4 and Edwards beat Wayne Miller, 3-2, wrestling at 157 (Dewalt wrestled at 147 against Michigan).

Stever Erber (137), Dewalt and heavyweight Don McKenna lost by decisions against the Wolverines while Gill was the victim of a second-period win.

Against Lehigh, Dewalt's 11-7 decision of Harley Ferguson and Strayer's win accounted for all the Lion points.

**Erber, McKenna Pinned**

Balent, Piven, Edwards, Gill and Walker were all decided while Erber and McKenna were both pinned in the final period.

Edwards' 9-7 loss to Engineer captain Doug Koch was only his second setback in 21 regular-season bouts over three years. He lost to Maryland's Pat Varre, 4-2, in 1962 as a sophomore and had been unbeaten in 16 straight bouts before last week's loss.



PETE LISKE

## Liske Chosen As Top Back In Hula Bowl

Pete Liske, who guided Penn State to a 16-5 record during his two years as quarterback, was named the outstanding back in the Hula Bowl played in Honolulu, Hawaii.

The recent signee of the New York Jets of the American Football League hit on seven of 17 passes for 69 yards in leading the North to a 20-13 win.

He connected for a scoring pass with Oregon State's Vern Burke and tallied another on a two-yard run. He also ran for the two-point conversion following one of the scores.

Captain Ralph Baker and tackle Harrison Roshdahl also participated in the game. It marked Roshdahl's first appearance in a game since a foot injury sidelined him in October.

# State Gymnasts Maul Mounties, Prepare for Massachusetts Tilt

By JOHN LOTT

The Penn State gymnastics team presented coach Gene Wettstone with an early Christmas gift over the term break—an impressive 70-26 victory over West Virginia at Morgantown in what proved to be a warmup for a tough EIGL schedule.

Wettstone used the meet to experiment with his personnel in an effort to get some idea for a regular lineup and the Lion mentor was more than satisfied with the team's showing.

Wettstone noted before the West Virginia meet that the nucleus of his 1964 outfit consisted of three all-around performers—juniors Mike Jacobson and Jim Culhane and sophomore Ed Isabelle. The results of the contest with the Mountaineers mirrored the truth of this statement.

Culhane took top honors in the horizontal bar (89.3) and Jacobson for first place in the parallel bars (87.5). Jacobson finished second in the

long horse vault and third in the horizontal bar despite a bad break midway through his routine.

Isabelle took up where he left off a fabulous fresh season last year, capturing a first in free exercise, second in horizontal bar and third in the parallel bars.

**Lions Sweep**

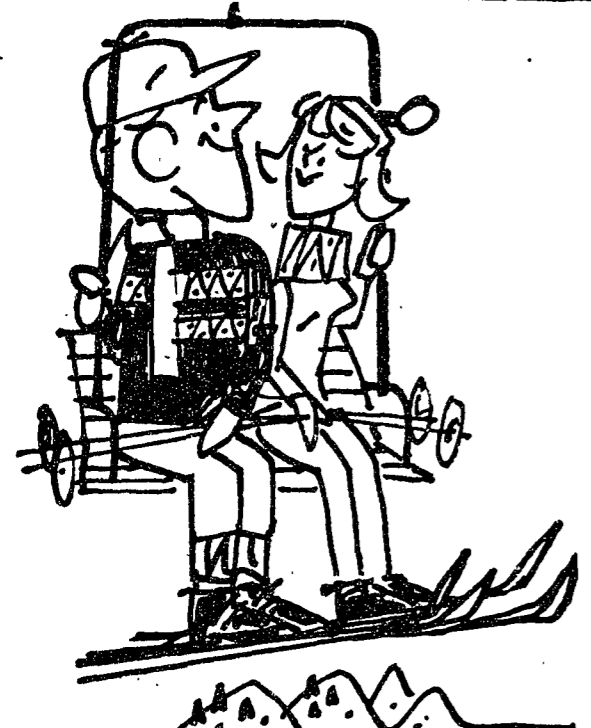
The other winners for the Lions, who swept firsts in all six events, were Pete Saponaro (long horse), Al Porter (side

horse) and John Martin (still rings).

Saponaro's 92.75 was the high score of the meet while Porter eked out a one point decision (88.5-87.5) over the Mounties' Jerry Spencer to win the side horse.

In the battle for this week's lineup positions, the biggest showdown looms in the parallel bars where Jacobson, Culhane and Isabelle take on letterman F. P. Sforza in the fight for the top spot. Sforza, unable to compete in the Mountaineers' clash because of academic probation, is also expected to land one of the higher positions in the long horse vault. He was one of State's best in that event a year ago.

**- BICYCLE -**  
PARTS  
REPAIRS • ACCESSORIES  
**Western Auto**  
112 S. FRAZIER ST.



So pressed for time that you haven't kept in touch with home?

With college activities making such heavy demands on you, telephoning is the quickest—and most satisfying—way to assure the family that you haven't forgotten them. Call tonight.

**GREEKS—don't forget**  
for your formals it's  
the Kenn Beacher Orchestra  
AD 7-3460

**SIGMA ALPHA MU**  
SWINGS INTO THE TERM WITH A  
**SAMMY JAMMY**  
All Rushees Are Welcome

Music: **THE FABULOUS JETS** SATURDAY, JAN. 11  
9:30 - 12:30

M M M M  
GUITARS  
PHONOS  
RECORDS  
MUSICAL SUPPLIES  
SHEET MUSIC

The **MUSIC MART**

M 224 E. College Ave. M  
M 238-3711 M

# WE BID YOU WELCOME TO KEELER'S — THE UNIVERSITY BOOKSTORE, INC.

**KEELER'S East**

Headquarters for all student texts & supplies  
Keeler's East . . . 206 E. College Ave.

**KEELER'S West**  
Keeler's West . . . 200 W. College Ave.  
Specializing in a complete selection of Engineering texts and supplies.

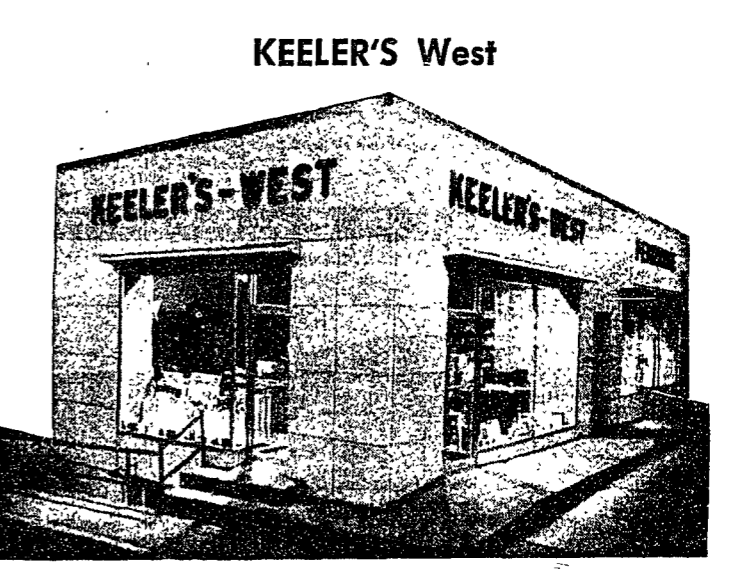
"The very best place to begin your college career"

Keeler's has been first for personalized self-selection SINCE 1926. We offer the widest selection, the highest quality, at the lowest possible prices. Our policy has always been one of courteous service combined with complete representation.

A good lesson to learn early in your college days is to develop the Keeler shopping habit. Here you'll find self-selection of all your textbooks and college supplies, with countless sales clerks to help you.

We offer a full-service school headquarters with the correct books for all courses. Free check cashing, speedy checkout service, comfortable air conditioning and soft Hi-Fi music are only a few of the "extras" you'll enjoy in this modern store.

We of Keeler's take this opportunity to welcome you, old friends and new, and to wish you the very best in your college career. We cordially invite you to stop in to shop or just browse around. We're anxious to see you and help start you on your way.



**Special store hours in effect**

Wed. Jan. 8, 8:30 a.m. to 9:00 p.m.  
Thurs., Fri., 9th & 10th  
8:00 a.m. to 9:00 p.m.  
Sat. Jan. 11, 8:00 a.m. to 5:30 p.m.

Open every Monday  
8:45 a.m. to 9:00 p.m.

**Sell Your Books for Cash**  
Wed.—Thurs.—Fri.  
Jan. 8, 9, 10

A buyer will be at Keeler's to pay cash for all books, whether used on this campus or not.

**SHOP EARLY**

**KEELER'S . . . The University Bookstore, INC.**

206 East College Avenue      Opposite East Campus Gate      AD 8-0254  
200 West College Avenue      Opposite Hammond Eng. Bldg.      AD 8-8417