

Research Review

Psychologists Test Word Association

By BARBARA SCHEFFER

Look at the word "table." If the first word that comes to mind is "chair" you have given the most "popular" response.

Samuel H. Osipow and Robert R. Grooms, psychologists in the division of counseling, are presently working on research in word association.

"We are trying to find out how students typically respond to verbal stimuli," Grooms said.

The psychologists are testing students on a standard group of words which were formulated for the Kent-Bosanoff Association Test. This test was originally used to find the type of response which greatly disturbed hospital patients.

TODAY psychologists use the test to determine what triggers the chain of thought that takes place during a word association test.

Osipow and Grooms have already tested 250 students who were selected from various classes on campus. Upon completion of the testing, they plan to compare the test results with a similar study that was made at the University of Minnesota.

So far, the psychologists have found that for the most part, students respond with the "popular" answers.

Some words, Grooms said

produce interesting results. One such word is "sickness." The responses from males will most often be "health," then "death." Coeds normally respond with "health," then "marriage." Grooms said that this response indicates the "different value systems of the male and female."

Concerning student participation in the test, Grooms said, "We are quite pleased with the wholehearted response of the student body."

Although the test results are still being analyzed, Grooms said, we already understand something more about human behavior and that is our goal.

Last year two scientists were given a small grant from the University to begin their work, but since then they have been continuing the study in their free time. In the future they plan to present a paper on some of their results to the Eastern Psychological Association in New York.

AAH Professor Will Give Lecture On Controversial Statue of Lincoln

Harold E. Dickson, professor of art and architectural history, will lecture on "A Most Honest Abe," at 7:30 p.m. Monday in the Hetzel Union assembly room.

His lecture, co-sponsored by the Department of Art and Architectural History and the Pennsylvania Historical and Museum Commission, concerns George Grey Barnard, a sculptor who was a native of Centre County.

Dickson believes that Barnard's statue of Lincoln is one of the

most controversial statues ever made in the United States. When it was first unveiled, the statue was called "clumsy" and "ugly." Now, however, some people, including Dickson, think that it is the best sculpture of Lincoln that this country has.

In his talk, Dickson will discuss the making of this piece of sculpture, the controversy is produced during World War I when a duplicate of it was to be sent abroad and some of Barnard's later interest in Lincoln.

Sinai Cites Israeli Problems—Industry, Development, Values

Building Israel into a modern country has caused many problems because the society has had few links with modern Western civilization, Isaac Sinai, Israeli political analyst, said last night.

Sinai, speaking at Jewish services at the Hillel Foundation, said that Israel is going through a continuing process of change which presents a problem of psychological and emotional adjustment for the Israeli people.

"THIS CHANGE is an extremely long and painful process which requires men with strength of character to keep Israel moving forward," he said. "There is no short cut to the creation of a society which can make contributions to the modern world."

A second problem which Israel faces is over-production of her natural resources, he said.

"Israel has to become an industrial society. However, she is short of raw resource materials," Sinai said.

The only way to overcome this problem, he said, is to develop and utilize the skills and the brainpower of the Israeli people.

Other problems which the Jewish people face include learning to exist as a minority and trying not to lose sight of important values which are often overlooked today.

Academy Elects Prof

Max D. Richards, professor of management, has been elected secretary-treasurer of the Academy of Management.

The organization is the primary professional organization of research and teaching professors in management.

On Campus; Lutheran Service of Worship
Eisenhower Chapel, 10 A.M.
Sermon: "I do not have your hope"
By Campus Pastor
GREEKS WELCOME

COLLEGIAN CLASSIFIEDS

FOR SALE

PIPER MUSIC CENTER — Music headquarters for Hammond Organs, Pianos, all musical instruments and accessories, sheet music, and complete music books for education. Open daily till 8:00 p.m. except Wed. EL 6-3441.

NAVY OFFICERS UNIFORMS, one new, two used, SD blue and one new khaki, 6'1" 190 lb. Call John, AD 8-6156.

FOR SALE: Dorm Contract available immediately. Call Frank Orlando at UN 5-4332.

1958 MARLETTE Mobile Home—46x8. Excellent condition. Two bedrooms and automatic washer. Phone AD 8-1809.

MOTORCYCLE, 1955 Harley-Davidson 165 c.c.s, 3-speed trans., excellent condition. \$180. Call John AD 8-3443.

DORM CONTRACT. Will sell immediately. Contact Bruce UN 5-4679.

WOMEN'S FIGURE SKATES, size 8 and men's hockey skates, size 11. AD 7-2818 after 6 p.m.

DAVENPORTS, Over Stuffed Chairs, Breakfast Sets, Single or Double Beds, Chest of Drawers, Dressers, Tables, Boy's Used Furniture, just off Mountain Street, Leont. AD 8-0420. OPEN 6-9 p.m.

MEDICAL HUMOR—Buy as gift or earn \$3 each as our agent selling imported hand carved, humorous figures. Wonderful collector's item. Free catalog: Medical Humor Co., 506 West 57th St., New York City 19, N.Y.

BRAND NEW Sewing Machine. Will sell for half price. \$47. AD 8-8967.

FOR RENT

THREE LARGE ROOMS with private bath, unfurnished or partially furnished. Open March 24th. Parking. Central location. AD 7-7792, AD 8-0391.

GRADUATE STUDENTS, Upperclassmen: Comfortable rooms, running water or private bath, central location. (Double or single.) Quietly conducted for rest and study. The Colonial, 123 W. Nittany—AD 7-7792, AD 7-4850, Mrs. Cox.

1/2 DOUBLE ROOM, 3 1/2 blocks from campus. Free parking. Kitchen facilities. 420 S. Pugh St. Call AD 8-9450.

RIDE WANTED

RIDE FROM State College to Centre Hall 7:30 p.m. weekdays. Call AD 8-9862 ask for Sissy.

RIDE WANTED to Columbus, Ohio or anyplace within two hours of there for anytime Friday, Feb. 15th. Dale, UN 5-9655.

WANTED

SEAMSTRESS DESIRES work — ladies' and men's clothing. Reasonable. Pick up, deliver. AD 7-2312.

IT MAY NOT be big, but we miss it—The Delta Phi Epsilon BABY CUP AWARD. Reward. Call UN 5-8977.

WANTED: A USED Typewriter in operating condition. Call Joel UN 5-6451.

GIRL TO SHARE inexpensive apartment near campus. GRAD STUDENT preferred. Call AD 8-1233.

WANTED: TWO ROOMMATES for apartment—spring term. 124 N. Atherton. Call AD 8-9679.

TYPING WANTED

FAST, ACCURATE TYPING. Call AD 8-0797 after 6:00 p.m.

HELP WANTED

MEN: Business & LA; students, preferably with 10 credits or less, 18 hours per week working schedule adjusted to suit study and class schedule. \$45 per week to qualified applicants. Interview by appointment only. Call AD 8-8992.

WAITER WANTED. Call caterer, AD 7-4933.

WANTED TO RENT

LARGE HOUSE in State College suitable for housing at least twenty-five students. Call Foust Agency AD 7-4221, or come to the office at 632 West Beaver Avenue, State College, Pa.

LOST

LOST: ONE DELT Jacket at West Halls Friday night. Reward. Contact AD 8-2055.

THETA CHI PIN near McElwain or Ree Hall. If found call AD 7-4702, ask for Tom. Reward.

ONE PAIR LOAFERS in downtown vicinity of Shortlidge Road. Please call Nancy UN 5-4209.

FOUND

"A RADIOACTIVE Romeo and Juliet" Hiroshima Mon Amour, Sunday, Feb. 10 at 7:00 p.m., Schwab Auditorium, Dr. Milnor Alexander, discussion leader. Free.

TUTORING

PHILOSOPHY, PSYCHOLOGY, Sociology, History and Economics. Get expert assistance now. Call AD 8-8818.

PERSONAL

SUNDAY SPORTS Spectacular at Pi Lambda Phi, starring Rafer Johnson. All interested freshmen invited. Free refreshments. First feature starts at 2:00 p.m.

MISCELLANEOUS

INCOME TAX PROBLEMS? Call Nikki UN 5-4845 for inexpensive help.

"THE ALIENATION OF THE JEWISH INTELLECTUAL" Milton Himmelfarb, contributing editor of Commentary Magazine will speak Sunday, Feb. 10 at 8:00 p.m.—Hillel Foundation, 224 Locust Lane. Sponsored by Hillel Graduate Association. Free—open to all.

FREE STUDENT MOVIE "Our Mr. Bell" at HUB Assembly room Tues., Feb. 12, 12-1 p.m., 6-7 p.m.

A SWEETHEART DANCE, Feb. 15, 9-12 p.m. Music by Tony Felice. \$2.50 per couple. Refreshments will be served. Tickets at Wesley Foundation desk.

OPEN PLEDGE meeting, Alpha Phi Omega: Monday, Feb. 11, 1963 at 8 p.m., Rooms 212-213 HUB.

NEWMAN CLUB Lecture Series presents "What do Economists Know?" by Dr. Warren Robinson, Tuesday, Feb. 12, 8:15 p.m. HUB Assembly room.

EXPERIMENT WITH SLEEP—Learning Fascinating, educational. Use your recorder, phonograph. Details, huge catalog free. Research Association, Box 24-CF, Olympia, Wash.

WRITE SONGS? We can help get them published, recorded by companies like Victor, Decca. Free brochure. National Songwriter's Guild, Box 1987N, Ormond Beach, Florida.

ATMOSPHERE AT the La Galleria. Spaghetti with meat sauce, salad, garlic bread, \$3.99, Monday. La Galleria, 233 E. Beaver Ave.

SUNDAY AFTERNOON at the movies, "The Rafer Johnson Story," with sound and in living black and white. Refreshments free. Everyone invited. Pi Lambda Phi. 2:00 p.m.

GREEKS WELCOME. Lutheran Service of Worship, Eisenhower Chapel, Sunday, 10 a.m.

PENN STATE OUTING CLUB

Ski Division Meeting—February 14 (Valentine's Day) at 7 p.m. in 121 Sparks. EVERYONE WELCOME.

Sign up for the return Ski Meet with Pittsburgh at White Mountain, February 16 & 17. List at HUB desk.



Milton Himmelfarb

"The Alienation of The Jewish Intellectual"

MILTON HIMMELFARB
 Contributing Editor of
 Commentary Magazine

will speak

Sunday,
 February 10

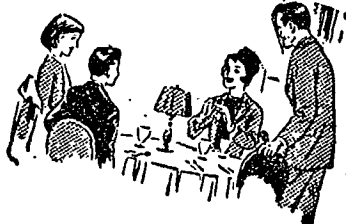
8:00 p.m.

Hillel
 Foundation
 224 Locust Lane

Sponsored by Hillel
 Graduate Association

FREE
 OPEN TO ALL

THE NITTANY LION INN



Sunday Buffet Dinner

12:30-2:30 P.M. 6 P.M.-8 P.M.

featuring

Our Famous Steamship Roast of Beef

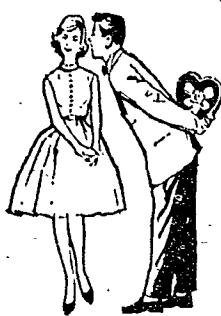
Every Sunday from Feb. 3 thru March 31

\$2.50 per person

Children under 12 yrs. \$1.00

GIFT WRAPPED
 AND WRAPPED FOR MAILING
 FOR FREE

Remember with

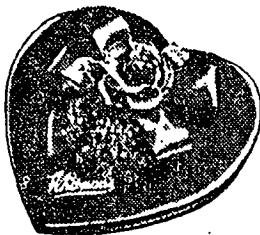


Whitman's
 CHOCOLATES

VALENTINE'S
 DAY

FEBRUARY 14

THE WORLD
 FAMOUS SAMPLER



Large variety of beautifully
 decorated hearts

\$2.00 lb.
 With beautiful Valentine overwrap

McLanahan's Drug Store
 134 S. Allen St.

McLanahan's Self-Service
 414 E. College