

# Mitchell Says He's Ready; Cagers Prep for Bucknell

By DEAN BILLICK  
Sports Editor

It's been a long, hard winter for Lion guard John Mitchell, but the senior co-captain is ready to wipe the slate clean and begin all over again Saturday night. And that could spell trouble for Penn State's eight remaining foes.

At least that's the word from Rec Hall where State's upstart Lions have been working for their game against Bucknell.

Mitchell has played exactly seven minutes so far this season since injuring his knee in a pre-season scrimmage game. The 6-0 floor general was the leading returning scorer from last year's team, but has canned just four points this season.

After the scrimmage injury, Mitchell played in the Lehigh and Marshall games, but both times pulled up lame with stretched knee ligaments after a couple minutes of action.

IT'S BEEN over a month, though, since that last injury and Mitchell feels his knee is ready.

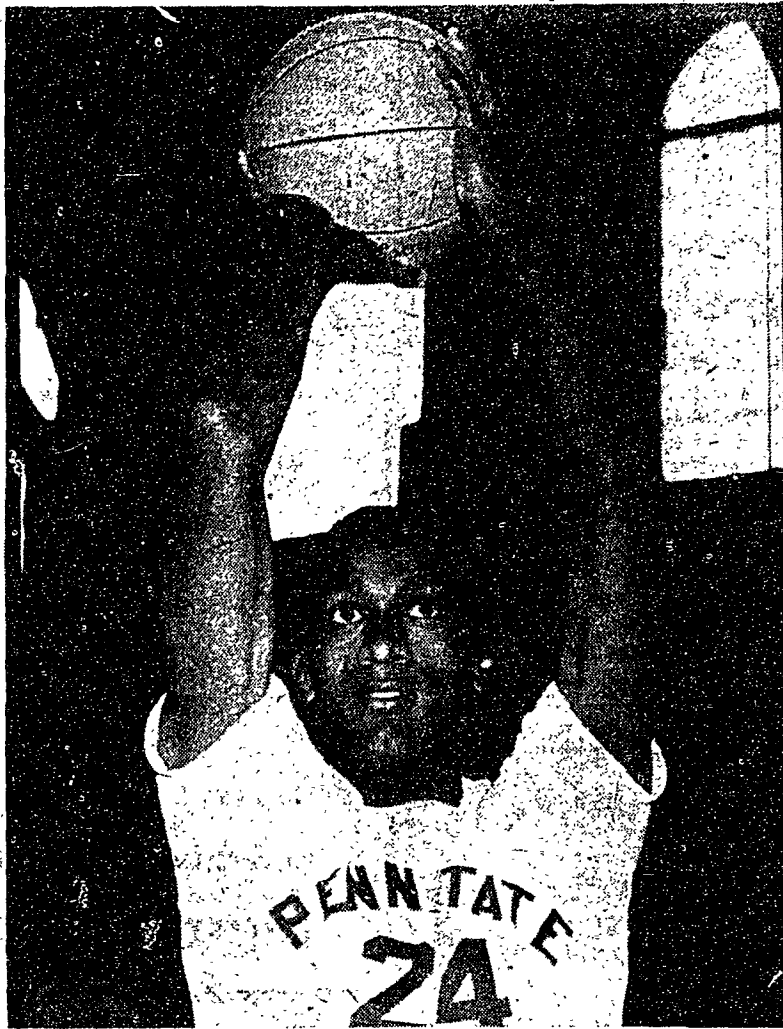
"I think I'm ready now, so it's up to the coach," Mitchell said last night after breezing through a rough scrimmage. "I'm optimistic I can play a lot of ball. I don't feel as if I'm through or finished."

The Nittany co-captain was quick, though, to praise the efforts of sophomore guard Bobby Weiss and junior guard Bobby Donato.

"They've done a real fine job, maybe even better than I could have done," Mitchell said. "But I've played on the first team for two years and I just hate to sit on the bench. My knee feels good and I think I can help the team for the tough part of the schedule coming up."

Lion coach John Egli isn't saying much but it's plain to see he's happy to have his co-captain back.

"HIS KNEE looked good to-night and we'll just have to see how it reacts under pressure," Egli said last night. "Mitchell is



JOHN MITCHELL

... ready to try again

starting to work real hard and that's good to see."

Egli said, however, he will stick with the same lineup that has won four of its last five games and carried the brunt of State's 9-3 record.

"We've been winning and I'm not about to change a winning combination," he explained. "It's like this: If I'm winning with three aces, I'm not going to change

to duces."

AND WINNING the Lions have been: With two sophomores, two juniors and a senior doing the heavy duty, the cagers have raced to a surprisingly strong first half.

Before the loss to West Virginia one week ago, State knocked off in succession, Temple, Bucknell, Colgate and Syracuse.

The loss to sixth-ranked West Virginia was no disgrace either. Twice in the last half State fought back huge deficits to close the gap to five and then three points. However, the home court advantage and the Mountie superior bench strength was a little too much for Egli's "Iron-Five."

Senior Earl Hoffman leads the Lion scoring barrage at 240 points with a 47.5 shooting percentage and a 20-point average per game. Sophomore sensation Weiss trails Hoffman with 169 points, followed by Donato with 137 points, Ron Avillion with 89 scores and Tom Malinchak with 62.

VANDERKELEN, 23, said he had been sought by seven or eight other pro football clubs, but chose the National Football League Vikings because they offered a greater opportunity to play.

## VanderKelen Signs With Vikings

ST. PAUL - MINNEAPOLIS (AP)—The Minnesota Vikings lured Wisconsin's stylish quarterback Ron VanderKelen across the border yesterday and ended three weeks of speculation by getting his signature on a pro football contract.

The Wisconsin senior, pretty much ignored by the pros until his record-setting passing show in the Rose Bowl, signed a one-year contract for undisclosed terms.

WHEN VANDERKELEN left the field last November after Wisconsin beat Minnesota 14-9 for

# Windproof Siding Encloses Ice Rink

By JOE GRATA

Workmen recently put the finishing touches on Penn State's newest and most modern recreational facility—the University Ice Rink—by completely enclosing the huge pavilion from the elements of winter.

Specially tinted translucent panels of plastic were installed at both ends of the towering dome-like structure, while glass windows and doors were placed along the sides.

The two large walls of this tinted plastic material almost isolate the skater from outside weather, but the addition brings with it several advantages. It not only repels snow, wind and sunlight, but helps to maintain an even indoors temperature by keeping out excessively cold weather.

THE ENCLOSURE marks the third addition to the original project since January of 1955, when the skating rink was officially dedicated. The first was the addition of a clubhouse and facilities; the second, the gigantic pavillion roof.

"For years there has been a crying need for an outdoor facility on this campus," Athletic Director Ernest B. McCoy remarked shortly after the opening. "It's our belief that we are filling this want by providing an ice skating rink."

During the University's Christmas recess in December of 1954, a crowd of 800 skating enthusiasts christened the artificial rink. At that time, work on the clubhouse was nearly finished. Construction of the pavillion roof—the second major phase of the project—was

completed two years ago.

The ice rink helps to alleviate the University's apparent need for complete and adequate recreational facilities. If the administration would ever elect to promote competitive ice hockey, the surface of the rink measures 100 by 200, a substantial area for the sport.

Approximately 13 miles of pipe, about one inch in diameter, weave beneath the surface of the ice. These pipes lie three inches apart, parallel to each other, and rest on metal rockers imbedded in concrete.

Two compressors, each powered by a 120-horsepower engine, and two circulatory pumps, powered by 25-horsepower engines, regulate the temperature of a calcium chlorine refrigerant (brine) and continuously move it through the intricate pipe network.

When the temperature of the refrigerant rises to above 18 degrees, it condenses and flows back to one of the compressors, gets reprocessed to a temperature of 16 degrees and is recirculated.

According to Jerry Galaida and State golf coach Joe Boyle, who handle managerial duties at the rink, the Zamboni ice-resurfacing machine rates as the most popular feature among skaters.

THE SELF-PROPELLED vehicle makes an average of seven daily trips over the ice, scraping off the old surface and laying down a thin sheet of water which quickly freezes into a shiny, new surface. It takes less than 15 minutes for the resurfacing process.

"The ick rink is just like another classroom," contends Bob Rutherford, Jr., supervisor. "Student skating classes are held here all day long. Then we offer open skating for the students and general public."

Rutherford reports that the largest count of skaters ever to pack the rink was 900, in 1957. Even now on weekends the rink attracts upwards of 500 skaters.

Open skating hours are from 7 to 10 p.m. every day except Sunday. On Tuesdays the hours range from 1 to 3 p.m., and on Thursdays, from 1 to 5 p.m. On Saturdays and Sundays the rink is open from 1 to 4:30 p.m.

## IM Results

### Basketball

#### Fraternity

Phi Gam Del	37	Tau Phi Del	22
Sigma Nu	32	Pi Kap Phi	22
Al Phi Al	30	Delta Phi	21
Phi Kap Sig	29	Al Chi Sig	20
High Scorer—KIM POWELL, Sigma Nu,			

#### Independent

Lyons III	31	Lyons I	22
Butler	29	Somerset	8
Clearfield	27	Lyons IV	25
Mifflin	22	Cumberland	20
Lyons II	21	Northumberland	16
High Scorer—MIKE KIRSCHNER, Lyons III,			

### Bowling

#### Independent League A

Erie	8	Indiana	0
Allegheny	8	Concrackers	0
Nittany 36-37	8	Luzerne	0
Tornadoes	8	Cumberland	0
Head Pins	6	Viceroy	2
High Game—RICHARD HOLVERSTOTT, Head Pins, 223			
High Series—CURT KUHN, Head Pins, 521			

#### Independent League B

Chestnut	8	Butternut	0
York	8	Lawrence	0
Balsam	6	Lebanon	2
Owls	6	Poodles	2
Lovers	6	Hi-Lo's	2
High Game—HARRY HARRIS, Lovers, 223			
High Series—BILL BRACKEN, Owls, 228			

**New College Diner**  
Downtown Between the Movies

# RUSHING SMOKER

# PHI KAPPA TAU

Wednesday, January 23, 1963

7-9 p.m.

FRESHMEN WELCOME

Fairmount & Garner

Refreshments and Entertainment

*Kalin's*

MEN'S STORE

STATE COLLEGE

WILL BE

# CLOSED

ALL DAY WEDNESDAY, JAN. 23

IN PREPARATION FOR

ANNUAL WINTER

# SALE

Which begins Thursday morning at 8:30