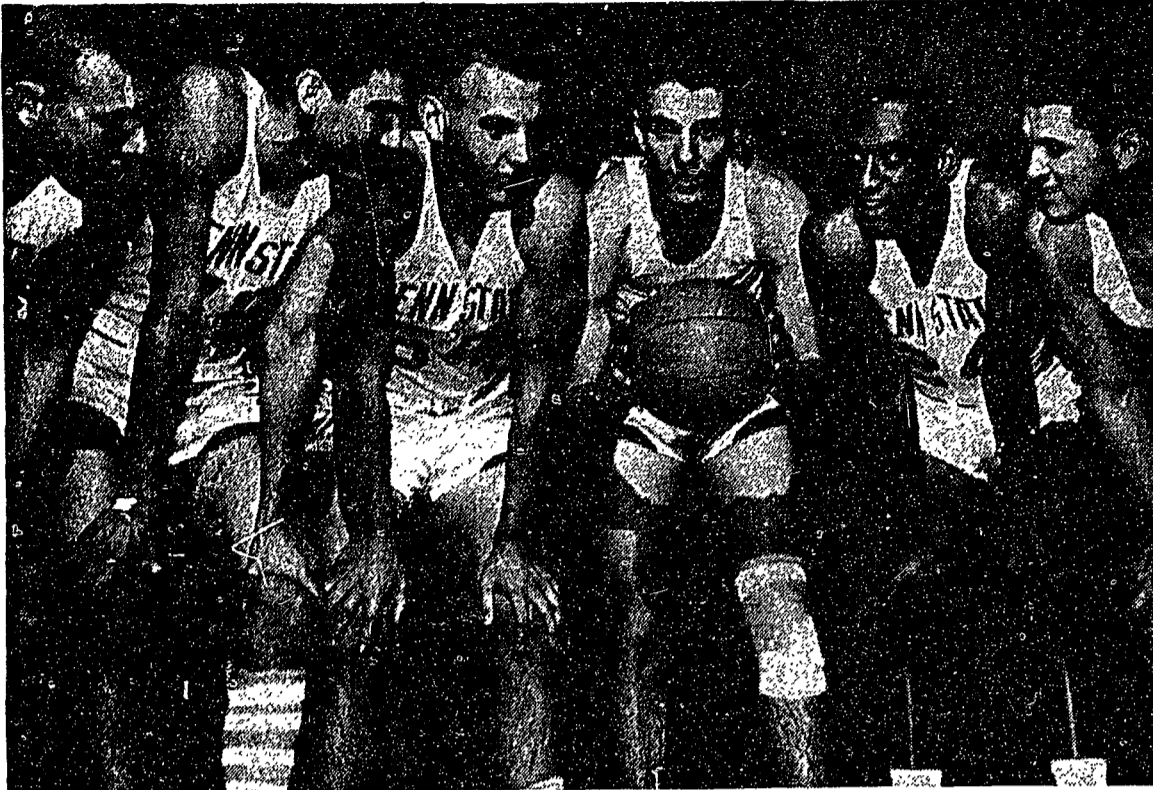
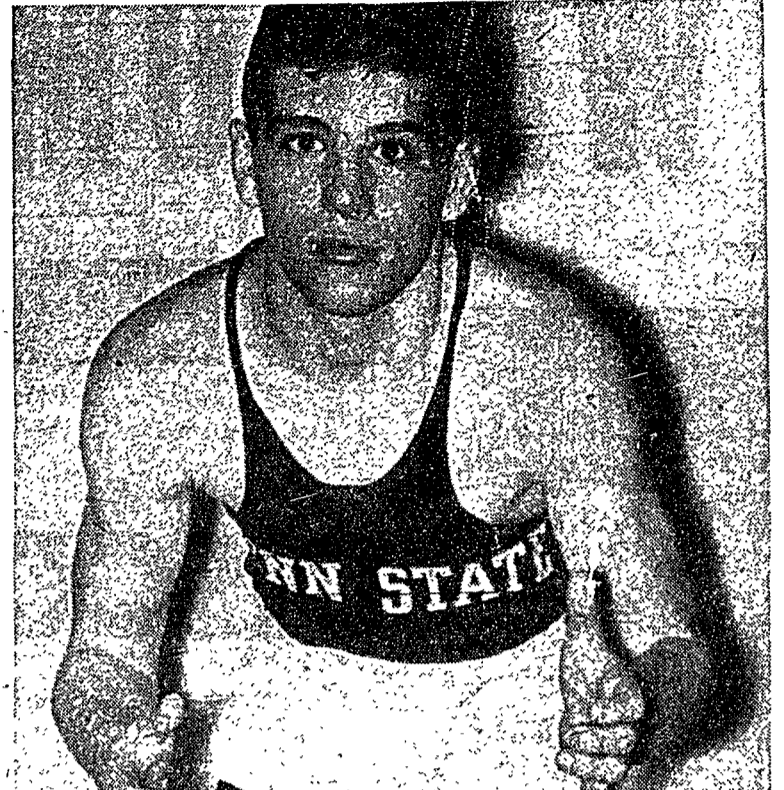


# Doubleheader To Start at 7 p.m.



OWL HUNTING: Penn State will be gunning for its sixth win of the season tonight when it hosts Temple (7-2) at Rec Hall in the second half of a doubleheader. The game is scheduled to start at 9:15 p.m. From left to right: Bob

Weiss, Ron Avillion, Ulo Kart, co-captain Earl Hoffman, co-captain John Mitchell and Bob Donato. Mitchell will miss the game due to a knee injury.



SEEKS REVENGE: Denny Slattery, State's 123-pound wrestler will be out to avenge last year's 5-1 overtime defeat in the Easterns by Lehigh's Bill Merriam when the two tangle tonight at Rec Hall. State will wrestle Lehigh in the first part of a doubleheader beginning at 7 p.m.

# Cagers, Matmen at Home

## Lion 5 Bids for 6th Win Against Powerful Temple

By DEAN BILLICK

For the second straight year Penn State basketball coach John Egli must be wondering if there really is a Santa Claus. If there is, Egli wouldn't mind if the old gentleman would leave him a few presents under the Christmas tree. At least if St. Nicholas chose not to leave presents, Egli was hoping he wouldn't drop quite so many ashes in his stocking.

To be more specific, the Lion coach was looking for a couple of presents—basketball style—and instead got ashes—injured player style. And for the second straight year what looked like it might be a Merry Christmas, turned into a near nightmare. Last season Egli's cagers won their first four games for the best start in State history. Then came West Virginia, Christmas and Santa Claus. West Virginia brought the loss, Santa Claus brought injured players and a lost player (star Wayne Lundy) and Christmas brought disaster in the ECAC Holiday Tournament. When the "Season to be Merry" was over, the Lions were a poor 5-6.

THIS YEAR the ball started bouncing right for the Lions, just as it had last season. State upset strong Maryland, 62-61, and then mauled Lehigh, 77-49. Next to fall before the Lions were Syracuse, 67-54, and Colgate 62-40.

Then Santa Claus payed a premature visit to the Egli household, Dec. 22, and Pitt stomped the Lions with a second half rally, 68-48. Meanwhile 6-7 sophomore center Terry Hoover broke his finger in the Syracuse game, after looking good in his first few games, and the injury began to take its toll on the team.

Also out was team co-captain and leading returning scorer John Mitchell, who severely injured his knee in the Lehigh and Colgate games.

With two starters out, the Lions entered the Alpine Tournament in Charleston, W.Va. State simply outclassed Marshall, 75-65, in the first game, but the injuries told the story in the championship game and the Lions lost to Miami of Ohio, 73-66.

WITH A 5-2 RECORD things looked pretty bright, but Santa still had some ashes to drop. Term grades came out and Egli again was in trouble. Three Lions were declared ineligible—6-7 center Ulo Kart, 6-9 center Bob Hutchison and 6-5 guard Chuck Marlin.

Last year the Lions finished with a 12-11 chart, but Egli has his sights set on a better record this year. A stiff test comes to-

night when State meets powerhouse Temple in Rec Hall in the second end of a doubleheader. The game will follow the wrestling match and is scheduled for 9:15.

Temple is 7-2 this season, losing only to nationally ranked Kentucky by four points and dropping an upset to Delaware Thursday night, 64-52.

Senior co-captain Earl Hoffman has been the big gun for State so far this season and the 6-5 forward could turn out to be one of the top players in the East.

Hoffman has riddled the nets for 134 points and a 19.1 average per game. The two-year letterman has shot a near fantastic 46 per cent from the field and has pulled in 52 rebounds, second highest on the team. His best game was against Marshall when he tallied 33 points. This plus 18 points the next night against Miami won him a place on the Alpine All-Tourney team.

STARTING WITH Hoffman at the other forward spot tonight will be sophomore Ron Avillion. The 6-6 former Luzerne, Pa., star has hit for 49 points with a 45 per cent field goal shooting average.

Two other sophomores will also start. Bob Weiss, who could well be one of the Lions' best ball-players ever, will man a guard post and 6-6 Tom Malinchak will handle the center spot.

Weiss is State's second leading scorer with 92 points and a 41.8 field goal percentage. He has looked brilliant in spots and Egli is waiting for the former Athens, Pa., star to really break loose.

Malinchak took over the center duties from Hoover and has shown steady improvement.

Hoover is almost recovered from his broken finger and Egli may insert the big boy in the lineup if the Lions run into too much trouble.

JUNIOR BOBBY DONATO, who has been the big surprise of the team, will be the other guard. Donato has scored 75 points and has been the field general.

Temple will start 6-2 Bob Harrington, 6-2 Vince Richardson, 6-8 Jim Boyle, 5-11 Frank Bishop and 3-0 Cary Kasmer.



Egli Speidel

## Wrestlers Face Big Test Against Eastern Champs

By JIM BUKATA

If Charlie Speidel could only find some heavyweight wrestlers, his Lions would stand a good chance of upsetting defending Eastern Champion Lehigh at Rec Hall tonight. The match, which will begin at 7, is the first half of a basketball-wrestling doubleheader.

"We're quite strong in the lightweights," Speidel said, "but there is no experience among our heavier weights."

In the Lions' two matches over the vacation, the lightweights won seven of the eight bouts in which they competed.

State lost to Navy, 17-12, but bounced back to upend Michigan, 14-11.

DENNY SLATTERY at 123, Bob Haney at 130 and George Edwards at 147, are unbeaten while sophomore Dave Thiel has a 1-1 mark at 137. His only loss came at the hands of Mike Harman of Navy, a 1962 Eastern Champion.

In the last five weight categories, however, the Lions have been able to pick up only a win and a tie against seven losses, and both the win and tie were posted by Marty Strayer at 167.

"We're going to have to win big in the lower weights if we want to make a good showing," Speidel said. "And I'm hoping one of my heavyweights can come through for us."

Pat Smartt, Lehigh's 130-pound Eastern Champion, will not wrestle for the Engineers tonight due to a shoulder injury suffered during a workout. Sophomore Larry White will take his place in the lineup.

Last year the Engineers were heavy favorites to beat State, but the Lions put on one of their best showings of the year and only lost 15-12.

EACH TEAM will have two wrestlers back that posted wins in the match.

Haney and Edwards were victorious for State while Bill Merriam and Kirk Pendelton won for Lehigh.

Speidel pointed out that Lehigh has three Eastern champions returning and two of them wrestle in the lighter weights.

Merriam, the Engineers' 123-pound champion, will bring a 1-1 mark into his match against Slattery.

MERRIAM WON his opening match at Cornell handily, but was upset by Syracuse's Terry Haise, 7-6, when the Orange ended Lehigh's 16-meet win (Continued on page twelve)

# Winter Sports Roundup

BASKETBALL										
DEC. 1 (A)										
PENN STATE	62	MARYLAND	61							
FG	F	T	FG	F	T					
Hoffman	8	4	20	Carlson	1	0	2			
Avillion	0	0	0	Greenspan	6	9	21			
Hoover	3	4	10	Barton	1	0	2			
Donato	6	5	17	Eicher	4	5	13			
Weiss	5	3	13	Carpenter	5	3	13			
Marin	1	0	2	Ferguson	3	1	7			
Kart	0	0	0	McWilliams	1	1	3			
Totals	23	16	62	Totals	21	19	61			
DEC. 3 (A)										
PENN STATE	77	LEHIGH	49							
FG	F	T	FG	F	T					
Avillion	6	1	13	Usilton	3	0	6			
Donato	2	1	5	Thomas	5	1	11			
Hoffman	4	2	10	Canis	1	1	3			
Hoover	8	0	6	Stolberg	5	3	13			
Weiss	6	6	18	Air	2	0	4			
Mitchell	0	0	0	Mock	2	1	5			
Marin	3	3	9	Ardern	1	0	2			
Hutch'son	1	0	2	Bulliner	1	3	5			
Kart	2	4	8	Phillips	0	0	0			
Carn	1	0	2							
Ludwig	1	0	2							
Jones	1	0	2							
Totals	30	17	77	Totals	20	9	49			
DEC. 8 (H)										
PENN STATE	67	SYRACUSE	54							
FG	F	T	FG	F	T					
Hoffman	8	0	16	Weber	1	0	2			
Donato	2	2	6	Seaman	1	0	2			
Hutch'on	0	0	0	Vernick	2	2	6			
Marin	2	0	4	Schoff	2	5	9			
Kart	0	0	0	Duffy	1	1	3			
Avillion	3	7	13	Foster	3	1	7			
Weiss	7	4	18	Finley	1	5	7			
Carn	0	0	0	Murray	1	0	2			
Hoover	1	3	5	Taylor	1	2	6			
Mal'chak	0	2	2	Weldman	1	0	2			
Ludwig	0	3	3	Bailey	1	0	2			
Tydemani	0	0	0	Kut'wiski	3	0	6			
Totals	23	21	67	Totals	19	16	54			
DEC. 11 (H)										
PENN STATE	62	COLGATE	40							
FG	F	T	FG	F	T					
Weiss	7	0	14	Corbett	4	0	8			
Hoffman	9	2	20	TeCarr	1	1	3			
Kart	1	2	4	Brown	3	1	7			
Donato	6	2	14	Raabe	1	0	2			
Avillion	3	2	8	Druck'ler	5	0	10			
Marin	0	0	0	Muntner	2	3	7			
Mal'chak	0	0	0	Wood'rd	0	1	1			
Ludwig	0	0	0	Richards	0	0	0			
Carn	0	0	0	Cruthers	1	0	2			
Eck	0	0	0	Karpinski	0	0	0			
Hutch'on	1	0	2	Pomme'm	0	0	0			
Totals	27	8	62	Totals	17	6	40			
DEC. 22 (H)										
PITT	63	PENN STATE	48							
FG	F	T	FG	F	T					
Jinks	3	7	13	Donato	0	4	4			
Sheffield	3	3	9	Weiss	3	5	11			
Krieser	1	4	6	Hoffman	5	7	17			
Gener'wh	5	4	14	Avillion	0	2	2			
Roman	5	0	10	Kart	0	6	6			
Grugvich	3	0	0	Malinechak	1	1	3			
Sauer	5	0	10	Hutch'son	1	0	0			
Ruby	2	2	6	Marin	0	0	0			
Larkin	0	0	0	Ludwig	0	2	2			
McIntyre	0	0	0	Totals	24	20	68			
Totals	24	20	68	Totals	10	28	48			

ALPINE TOURNAMENT										
DEC. 28										
PENN STATE	75	MARSHALL	65							
FG	F	T	FG	F	T					
Ho'man	16	1	33	Williams	4	3	7			
Hutch'on	0	1	1	Smittle	2	3	7			
Mal'chak	3	0	6	Syden'ser	5	3	13			
Mitchell	1	2	4	Clark	2	0	4			
Weiss	5	0	10	Roy	0	0	0			
Donato	3	3	9	Carter	6	0	12			
Avillion	3	0	6	Wildt	3	2	8			
Kart	0	6	6	Newsome	3	0	6			
Tucker	2	0	4	Sword	2	0	4			
Tracy	0	0	0	Tucker	0	2	2			
Totals	31	13	75	Totals	27	11	65			
CHAMPIONSHIP GAME										
MIAMI 73 PENN STATE 66										
FG	F	T	FG	F	T					
Gehring	10	5	25	Hoffman	8	2	18			
Dinkins	8	3	19	Mal'chak	3	1	7			
Moon	3	0	6	Hutch'son	0	0	0			
Coles	6	2	11	Weiss	3	2	8			
Snow	0	3	3	Donato	4	12	20			
Strome	1	0	2	Avillion	3	1	7			
Johnson	1	0	2	Kart	1	1	3			
Stewart	0	0	0	Ludwig	0	1	1			
Emerick	0	0	0	Marin	1	0	2			
Swan	1	0	2	Totals	30	13	73			
Totals	30	13	73	Totals	23	20	66			
WRESTLING										
DEC. 8 (A)										
NAVY 17	PENN STATE 12									
123—Slattery, Penn State, dec. Johnson, 4-0.										
130—Haney, Penn State, dec. Crawford, 5-4.										
137—Harman, Navy, dec. Thiel, 4-0.										
147—Edwards, Penn State, dec. Briner, 3-2.										
157—Meinig, Navy, dec. Beatty, 12-2.										
167—Strayer, Penn State, dec. Carey, 2-0.										
177—Morgan, Navy, dec. Zabatta, 15-2.										
191—Franzen, Navy, pinned Moen, 8:13, head scissors.										
Hwt.—Tebben, Navy, dec. Gill, 3-0.										
DEC. 15 (M)										
PENN STATE 14 MICHIGAN 11										
123—Slattery, Penn State, dec. Bahna, 3-1.										
130—Haney, Penn State, dec. Armelagos, 4-1.										
137—Thiel, Penn State, dec. Dozeman, 5-4.										
147—Edwards, Penn State, dec. Deitrick, 2-1.										
157—Miller, Michigan, dec. Beatty, 2-1.										
167—Strayer, Penn State, and Bay, drew, 4-4.										
177—Stowell, Michigan; dec. Gill, 7-6.										
Hwt.—Barden, Michigan, dec. Moen, 8-0.										