



YULETIDE SPIRIT: The holiday season is in full swing in Waring Lounge as the yule log burns in the fireplace to warm the hearts of weary students. The lounge was decorated by residents last Wednesday.

Marine Society Requests Toys from Students

The Semper Fidelis Society, a campus group of Marine Corps reservists, recently requested that students donate unwanted, used toys for its annual Toys for Tots campaign. The toys will be repaired and distributed to Centre County

children "who would otherwise go without a single toy at Christmas," Marine Maj. Earl Roth, State College chairman said. There will be a collection point on the Hetzel Union ground floor where both new and used toys may be deposited until Friday.

THIS WEEK ON CAMPUS

Today

Artists Series

The workshop with Sangeeta Madras, originally announced for 11 a.m., will not be held. The concert will go on as scheduled at 8:30 p.m. in Schwab.

Phi Beta Kappa

Kirtley F. Mather, professor emeritus of geology at Harvard University, will be the speaker at the Phi Beta Kappa banquet at the Nittany Lion Inn, marking the 25th anniversary of the founding of the Penn State chapter of the national scholastic honor society. His subject will be, "The Scholar in a Technological Culture."

Student Loans

All students who are to receive either National Defense loans or University loans for the winter term are to report to the Student Loan Office, 6 Willard, if they have not already done so. They must report to sign for their loans before going home.

Other Events

Chess Club, 7 p.m., HUB card-room.
Chess Team, 8 p.m., 213 HUB.
History Round Table, 7 p.m., 217 HUB.
Horticulture Club, 7:30 p.m., 108

Tyson

P.S. Bible Fellowship, 6:15 p.m., 212 HUB.
School of Arts, 4 p.m., 217 HUB.
Speech Group, 8 a.m., HUB assembly hall.
Women's Chorus, 6 p.m., HUB assembly hall.

Tomorrow Convention

David V. Erdman, editor of Library Publications for the New York Public Library, will speak on William Blake at the second conference on bibliography, to be held at the Nittany Lion Inn at the University today through Saturday.

Lecture

Raymond A. Katzell, director of Research Center for Industrial Behavior at New York University, will talk on "Research on the Construct of Morale" at the Psychology Colloquium to be held in 111 Boucke at 8 p.m.

Other Events

Daily Collegian Credit Staff, 7:45 p.m., 131 Sackett.
Society of American Military Engineers, 7 p.m., 214 Boucke.

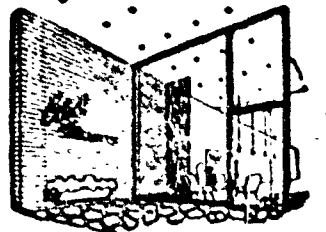
Saturday Concert

The Penn State Singers will

Join with the University Symphony in the performance of Berlioz's "L'Enfance du Christ" at 8 p.m. in Schwab.

Monday Lecture

Joseph Mann, professor and head of the Department of Engineering Mechanics, will speak on "Higher Education in the Soviet Union" in 109 Sackett at 4 p.m.



Through the Looking Glass

with Gabbi

Five . . . four . . . three . . . No, there's too many days left to start counting yet. It gets too discouraging. You could be counting how many exams you have to take yet, or how many hours you have to finish that term paper that's due today, or how many no-doz pills you need to stay up all night. Hmm, such morbid thoughts you have Gabbi! Just think of that wonderful month ahead with nothing to do but get bored and wish you were back at school again having fun! (did I say that?) Speaking of going home, that means Christmas, the time of year when we forget ourselves and think of others for awhile. Yes, that means presents especially for those roommates, and pinmates who live far apart and won't be able to get together over the holidays. If you want to think of others in the right way, think of Ethel Meserve's and the many beautiful (for you girls) and handsome (for you boys) gifts you can get there.

Think . . .

of a hand travel case by Celebrity for the roommate who likes travel. It contains a toothbrush, (with GI 90%!) and a useful little contraption that serves as either a pill box or a collapsible drinking cup. The attractive case comes in red, white, beige, and black. Price . . . only \$1.00.

Thing some more . . .

about a good-looking wallet. No, it's not just an ordinary wallet. Not from Ethel's where you get something a little bit different from the ordinary. This wallet has a useful note pad and an ever-sharp pencil attached, which is very handy for jotting down class assignments, and other very important things. A very nice gift reasonably priced at \$5.00.

Tired . . . ?

of seeing him wear that same old tie all the time? Well, now's the time to do something about it! Ethel Meserve's has a varied selection of famous Rooster ties. The hand printed batik is especially smart-looking. Price . . . \$2.50.

Stop in at Ethel Meserve's and do your Christmas shopping now. I won't see you again until next year so I'll try to say everything now. Good luck on exams, Merry Christmas, Happy New Year, etc.

See you next year, Gabbi

Ethel Meserve

112 E. College Ave.

SCOUT RESEARCH ROCKET . . . VOUGHT AERONAUTICS

XC-142 V/STOL TRANSPORT . . . VOUGHT AERONAUTICS

DALLAS . . . HOME OF LING-TEMCO-VOUGHT

SUPER CLEAN ROOM FACILITY . . . TEMCO ELECTRONICS

VOICE OF POLARIS STATION . . . CONTINENTAL ELECTRONICS

GYRO EARTH RATE COMPENSATOR LABORATORY . . . TEMCO AEROSYSTEMS

LING-TEMCO-VOUGHT . . . BRINGING TOMORROW CLOSER TO TODAY

Beneath the sea, beyond the sky or anywhere in between — this is the domain of vehicles, weapons and systems produced by Ling-Temco-Vought. While LTV is a relatively new name to industry, the company is comprised of experienced organizations with far-reaching technical talents. Together these elements are meeting the advanced challenges of military electronics, communications, space, aircraft and missiles and have placed LTV in the enviable position of one of the nation's top ten defense contractors. Today, LTV's activities include such programs as V/STOL, CRUSADER, SCOUT, SATURN, DYNA-SOAR and a supersonic, low-altitude missile. In addition, the company is supplying specialized military electronic equipment, super-power transmitters for the "Voice of Polaris" radio station, special purpose computers, actuators for MINUTEMAN and scores of other complex products and systems. Because of this continuing expansion, LTV's

divisions have ground-floor growth opportunities for graduates holding degrees in Aeronautical, Mechanical, Industrial, Electrical and Civil Engineering and Math, Physics or Metallurgy. Before selecting your industrial home, consider engineering climate, on-the-job orientation, professional development and location . . . consider LTV and Dallas — the social, intellectual and cultural center of the Southwest. We invite you to plan your future with us. For further information on career positions, contact your Placement Office or write College Relations Office, Ling-Temco-Vought, Inc., P. O. Box 5907, Dallas 22, Texas. Dallas Area Divisions:

CHANCE VOUGHT CORP./TEMCO ELECTRONICS
TEMCO AEROSYSTEMS/CONTINENTAL ELECTRONICS

LING-TEMCO-VOUGHT, INC.

P. O. BOX 5907 • DALLAS 22, TEXAS • AN EQUAL OPPORTUNITY EMPLOYER