

Pattee Hours Scheduled For Final Exam Period

Pattee Library will maintain regular hours during the final examination period. The regular hours are from 7:50 a.m. to 10 p.m. in all rooms except 107, which is open until 11 p.m. The branch libraries will also keep their regular hours during this period.

The agriculture library will be open Monday through Thursday from 8 a.m. to 10 p.m. The architecture library will be open from 8 a.m. to 5 p.m. each day.

The chemistry-physics library will be open from 8 a.m. to 11 p.m. Monday through Thursday, and the engineering library will be open from 7:50 a.m. to 11 p.m. on these days.

THE HOME ECONOMICS library will be open Monday through Thursday from 8 a.m. to 5 p.m., and from 7 p.m. to 10 p.m. The mineral industries library will be open 8 a.m. to 10 p.m.

Several of the college councils have reserved study rooms for their students during the fall term. The Business Administration Student Council has reserved 107 Boucke from 5 p.m. to 11 p.m. Monday through Friday.

The Liberal Arts Student Council has reserved several study rooms. These are 201 and 202 Boucke, open from 6 p.m. to 11 p.m. every night except Monday, 313 Willard from 6 p.m. to 11 p.m. every night except Tuesday and Thursday, and 213 Willard from 6 p.m. to 11 p.m. every night except Monday, Tuesday and Thursday.

The chemistry-physics has re-

served 115 Osmond from 6 p.m. to 11 p.m. on Monday through Friday nights. The Mineral Industries Council has reserved 121 Mineral Industries Building from 7 p.m. to 11 p.m. Mondays through Fridays except Wednesday nights.

ALAN BOBER, president of the Engineering-Architecture Student Council, said that any student wanting a room to study in may contact Lawrence J. Perez, assistant dean of the Engineering-Architecture College.

Cleanup To Close 15 Parking Areas

To speed up snow removal from University parking areas and roads, certain areas will be closed to parking between 2 a.m. and 6 a.m. effective immediately.

The areas affected, all of which will be posted, are generally in the central part of the campus. Parking lots included in the directive are 1, 11, 14, 23, 30, 38, 40, 41, 46, 50, 61, 62, 70 and 80.

The ban on parking will make possible the maneuvering of heavy equipment to speed up the snow removal procedure when it snows.

Russian Chess

Coach Seconds Tie Charges

A recent charge that Russians deliberately tie each other in international chess competition to keep more Russians in contention has been seconded by Donald Byrne, coach of the University chess team.

Agreeing with the published opinion of former United States Chess Champion Bobby Fischer, Byrne said that Russians frequently seem to enter into matches against their countrymen with little desire for victory.

BYRNE DOES not agree, however, with another Fischer charge that individual Russian conduct during chess matches leaves much to be desired. Having played against Russians in competition since 1954, Byrne said he has found them to be "perfect gentle-

men of the chess board." Byrne recently returned from the "Chess Olympics," or world's team championship, which was held from September 15 to October 10 in Bulgaria.

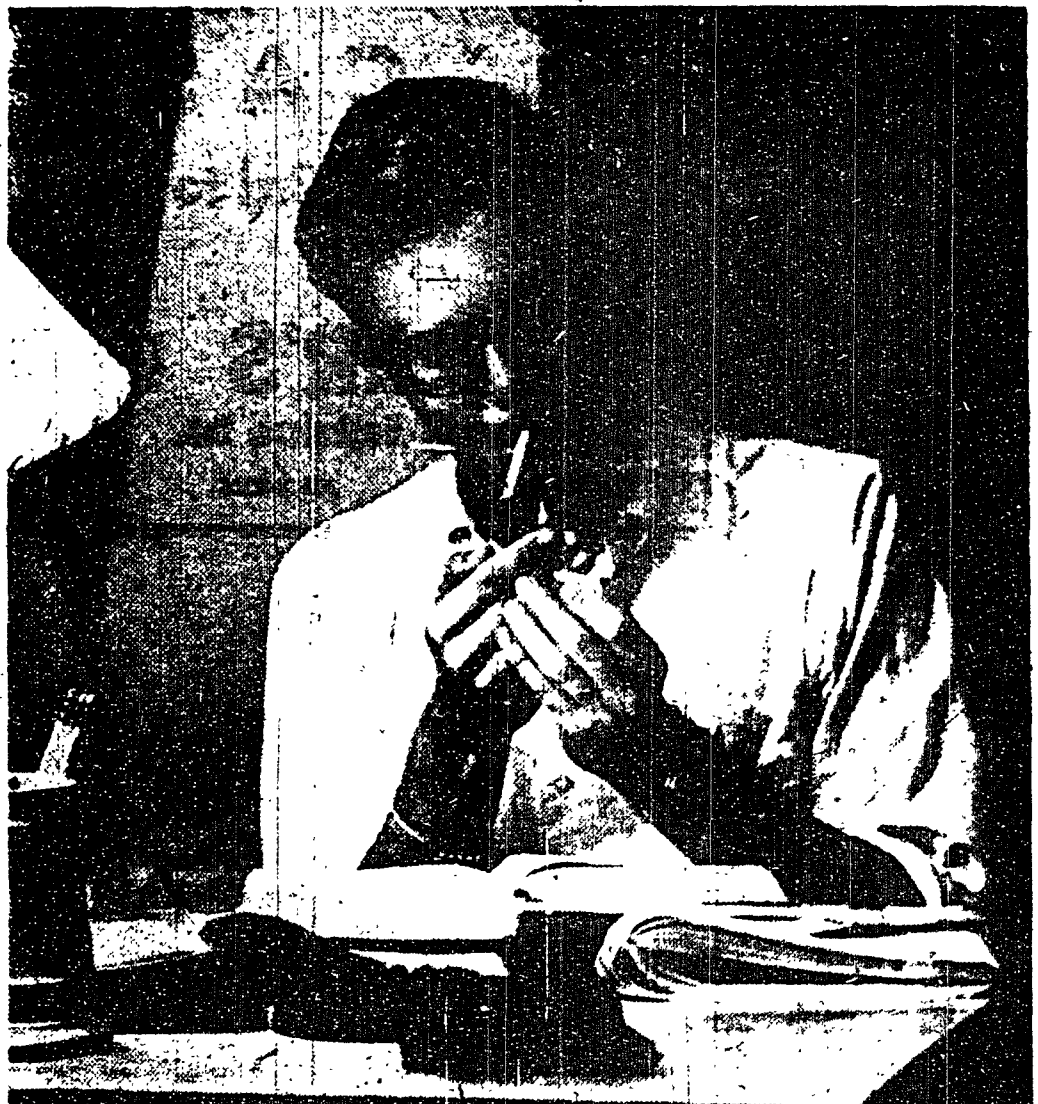
During the "Olympics," he tied former world's champion Mikhail Tal, of Russia, and finished fifth among approximately 220 players from 37 countries, who were entered in the tournament. The United States team, pre-tournament favorites to take second place, followed Russia, Yugoslavia and Argentina in the final team standings.

One of the top ten American chess players, Byrne started playing the game when he was seven years old and entered his first tournament at the age of 14.

United States Open Champion in 1953, he has also been the National Speed Champion a number of times. In the "speed" tournaments, a move must be completed in 10 seconds, Byrne said.

ALTHOUGH PLAYERS of his rank generally play four or five tournaments a year, this is not true in Byrne's case. He has been asked to participate in next month's invitational United States Championship but does not plan to compete for the "next several months."

He would, however, like the chance to play against a Russian team which has been invited to come to the United States in June. It would be the first time since 1944 that a Russian team has been in this country, Byrne said.

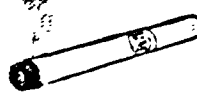


When a cigarette means a lot...

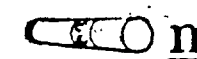
get Lots More from LM



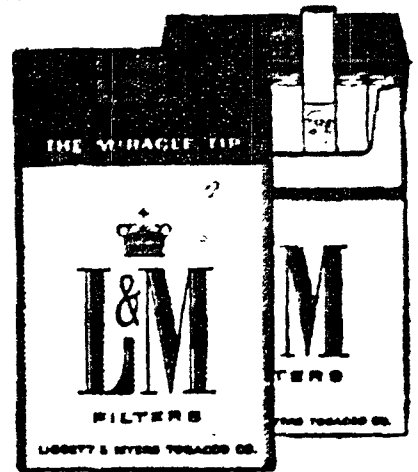
more body in the blend



more flavor in the smoke



more taste through the filter



And L&M's filter is the modern filter—all white, inside and outside—so only pure white touches your lips.

Enter the **LM GRAND PRIX 50** For college students only! 50 Pontiac Tempests FREE!




Hallmark

RELIGIOUS CHRISTMAS CARDS

... reflect the beauty in the true meaning of Christmas ... feature modern and old-world styling of your favorite religious themes ... available for your individual selection or in boxes

McLanahan's Self-Service, Inc.
414 E. College Avenue

McLanahan's Drug Store, Inc.
134 S. Allen Street



TAKE A BREAK ...

COME OUT AND BOWL AT

CENTRE LANES

Open every nite 12:00 noon to 1:00 A.M.

AD 8-1431

1600 N. Atherton State College
Next to J&L Bar-B-Que