

Letters

Ogontz Campus Students Protest Against Dispensary Hours

(This is an open letter to the administration of the Ogontz Campus of the Pennsylvania State University and printed here by permission of the signers)

TO THE EDITOR: As we are sure this has been brought to your attention before, the Dispensary is now open only Tuesday, Wednesday and Thursday of each week from 8 a.m. to 4:30 p.m. At all other times there is no one on campus who is qualified to take care of the various problems of a medical nature which arise.

Besides numerous cases of headache, nausea, colds, scrapes and splinters which are common to any enterprise of the magnitude of over 1,000 students, faculty and staff, various emergencies will, and do, arise.

As an example take note of the case of "The Broken Leg." Even at present the facts of the case are not crystal clear to all, but it seems from most reports that after breaking his leg (two simple fractures) on the Men's Athletic Field, the student involved walked up the hill to the Student Union Building, SUB, (in all probability aggravating the injury to a large extent) from where he was taken to the Abington Memorial Hospital (still, without any medication) and waited an undetermined length of time (almost an hour...—Ogontz Campus News) for treatment.

If a nurse had been present on campus, the student would probably have been saved much pain and aggravation with his injury even if all that was done was the use of Ogontz' new wheelchair (which we were so proud of in the spring term) to transport him to the hospital and the administering of a few aspirin tablets to relieve pain.

Many other things, which could have been emergencies, save for the quick action of a physical education teacher who believes he has a duty to the student's welfare above that of an instruc-

tor, have happened on campus on days when the Dispensary is closed. (Examples—deep cuts and contusions in Physical Education classes, scrapes and abrasions from the same source as above as well as others such as falling on the steps and campus paths) and it is certain that they will increase as the weather grows colder making skin more brittle and paths and steps slippery.

Happily, other accidents have occurred on days when the nurse was present and have been handled swiftly and efficiently by the Dispensary. Details are not necessary here but the instances are mentioned to show that trouble doesn't occur only on Mondays, Fridays and Saturdays.

We, the undersigned, therefore respectfully request action by the Ogontz Campus administration, or by whatever body responsible within the Pennsylvania State University to return the Dispensary of the Ogontz Campus to a full time schedule on Monday through Friday 8 a.m. to 4:30 p.m. and Saturday 8 a.m. to 12:30 p.m.

Signed by 222 students of the Ogontz Campus
List in The Daily Collegian office

Profs Write Logic Book

A book entitled, "Natural Deduction," by John M. Anderson and Henry W. Johnstone, Jr., both professors of philosophy, has been published by the Wadsworth Publishing Co.

The book is a systematic introduction to logic and metatheory based on the techniques of the German logician, Gerhard Gentzen.

Grad Student Sees Rugby as 'Growing Sport'

TO THE EDITOR: I would like to draw attention to some points made in last Saturday's issue of The Daily Collegian under the heading "Rugby Squad—Meets Penn."

The squad was formed about two months ago in the hope of introducing rugby to Penn State. All but three of the players in the squad had never seen a game of rugby, let alone played it. The first game played was a scrimmage against Villanova in which the State team was soundly beaten 46-3.

The improvement in each scrimmage has been little short of remarkable and at present the team has a 2-3 record with wins against St. Josephs (contrary to the information in the Collegian article) and on Saturday a fine 9-0 win against Penn. It was unfortunate that the Penn game was

delayed in starting due to car trouble on the way from Philadelphia. Those who waited were well rewarded with a fine game of rugby.

I might draw attention to the growth of rugby in the U.S. In California there are upwards of 60 teams in active competition, while in the East there are 36 clubs, mostly in the colleges, whereas two years ago there were only six. This is in keeping with a world-wide growth of rugby (in Europe it is beginning to threaten soccer as the most popular game — two weeks ago 70,000 people saw France play Rumania in Bucarest).

Rugby is a good game in its own right. The only requirements are fitness, stamina and a measure of courage. In spite of the apparent roughness of the game, injuries are few, and generally

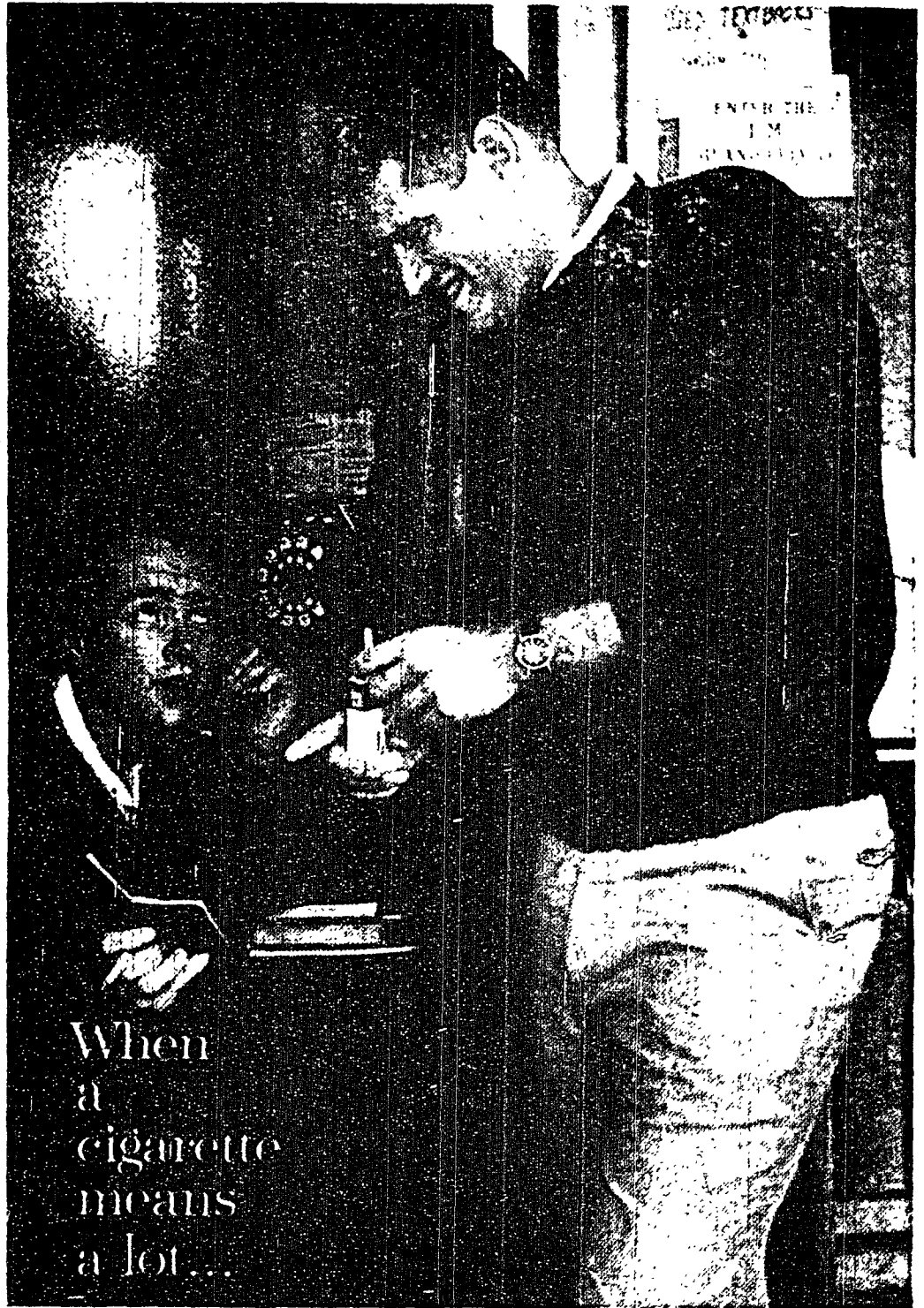
of a minor nature.

I feel that many who enjoyed touch football this term would enjoy rugby in the spring term when we will have a regular schedule, and, if the University favorably considers our petition, a recognized constitution and full status as a Penn State club.

Finally I would like to publicly thank the faculty of the Department of Physical Education, especially Dean McCoy and Professor Thiel for their cooperation in assisting the fledgling club. I am sure that if they could see the enthusiasm and keenness generated among the players they would feel well rewarded.

I am sure that by next spring rugby teams from Penn State will be hard to beat in intercollegiate and interclub competition.

—Ivan Jackson
Grad student



When
a
cigarette
means
a lot...

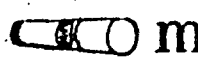
get Lots More from L&M



more body
in the blend



more flavor
in the smoke



more taste
through the filter



It's the rich-flavor leaf that does it! Among L&M's choice tobaccos there's more longer-aged, extra-cured leaf than even in some unfiltered cigarettes. And L&M's filter is the modern filter—all white, inside and outside—so only pure white touches your lips. L&M's the filter cigarette for people who really like to smoke.

New College Diner
Downtown Between the Movies

TV RENTALS
by day, week, month
HOTSC TELEVISION SERVICE CENTER
at State College TV
232 S. Allen Street

SCHOOL OF THE ARTS TALK

Prof Frank Neusbaum
WILL SPEAK ON HIS RECENT TRIP
TO BRAZIL

Nov. 26, 1962 7:30 p.m.
HUB Assembly Room

HILLEL CALENDAR

Sunday 8 p. M.
Cultural Art Film

"THE GOLEM"

Yiddish classic based on story of mystic Rabbi Judah of Leow who created a "robot" man.
English sub-titles.

LOX & BAGEL BRUNCH

Sunday 10:30 a. m.

Sponsored by
Alpha Epsilon Pi

Members . . . 45c Non-Members . . . 75c

HILLEL FOUNDATION
224 LOCUST LANE