

# Frosh Face Orange In Gridiron Opener

By FRANK QUIGLEY

\*\*\*

Freshman grid coach Earl Bruce will finally get a chance to see how his team stacks up when the Lion cubs oppose the Orangemen of Syracuse at 10 a.m. today on Old Beaver Field.

Bruce, in his seventeenth year of coaching at Penn State, is aided by Jay Huffman and Don Jonas in drilling the Lion frosh.

After a month of practice Bruce has finally been able to complete the difficult task of selecting his starting lineup. Because of the tough battles raging for the starting spot at most positions, Bruce has had to hold off in his selections until now.

**THE PROBABLE** starting backfield will have Dick Gingrich, Burnham, at quarterback; Don Kunit, Glen Cove, N.Y., and Dave McNaughton, Indiana, at the half-back positions; and Dick Barrett, Patton, at fullback.

Probable starters on the line are ends Ellery Seitz, Bellefonte, and Gerry Sandusky, Washington; tackles Joe Vierzbicki, Easton, and Dick Holzer, White Plains, N.Y.; guards Ed Stewart, Beaver, and Steve Schreckengast, Harrisburg; and center Bob Andronici, North Plainfield, N.J.

Other players expected to see heavy action are halfback Bob Riggle, Washington, Pa.; ends Bill Huber, Altoona, and Dick Nikolishen, Erie; tackles Gary Eberle, Corapolis, and Don Steinbacher, Philadelphia; guards Joe Bellas, Colver, and Jack Boye, Short Hills, N.J.; and center Wayne Bowman, Williamstown.

**BRUCE SAID** that because this is the first game of the year he will substitute freely in order to see which boys are the better



EARL BRUCE

\*\*\*

performers under actual game conditions.

"We are really more interested in developing players for the varsity than winning or losing, so we want to see what our boys can do," Bruce said.

Bruce plans to use a mixed passing and running attack against the Orangemen.

"I think we can pass and I think we can run; however we will have to wait to see how the Syracuse defense shapes up before we stress any part of our attack," he said.

### Lions Move on Ground

Penn State backs rushed for 2300 yards in 10 regular-season games last year, then added 137 more against Georgia Tech in the Gater Bowl.

# Chapas Paces Phi Kappa Sig Win

By JOHN LOTT

Led by the fine all-around play of Bill Chapas, unbeaten Phi Kappa Sigma ran its winning streak to three, trampling Alpha Kappa Lambda, 19-0, on the golf course gridiron last night.

A 25-yard pass play from Joe Davi to Larry Gaertner gave the Phi Kaps a slim 6-0 advantage after a first half filled with pass interceptions.

Following intermission, however, the winners broke the game wide open as Chapas whipped a 44-yard scoring pass to Jim Terry and later heaved another touchdown aerial to Dick Lacey.

On defense, Chapas was brilliant as he intercepted four Al-

pha Kappa Lambda passes during the course of the game.

**DEFENDING** champion Phi Delta Theta rebounded from a setback at the hands of the Phi Kaps last week by shading Tau Kappa Epsilon, 4-3, on first downs.

**TKE's** Bob Bartlett picked off an early Phi Delt pass and galloped 37 yards to give his squad a 6-0 halftime lead. But Phi Delt came storming back in the second half with a drive of their own, climaxed by Jerry Slagle's diving catch in the end zone of a Grier Werner pass.

In the waning moments of the game, Skip Villone intercepted a TKE aerial to preserve the victory for Phi Delt.

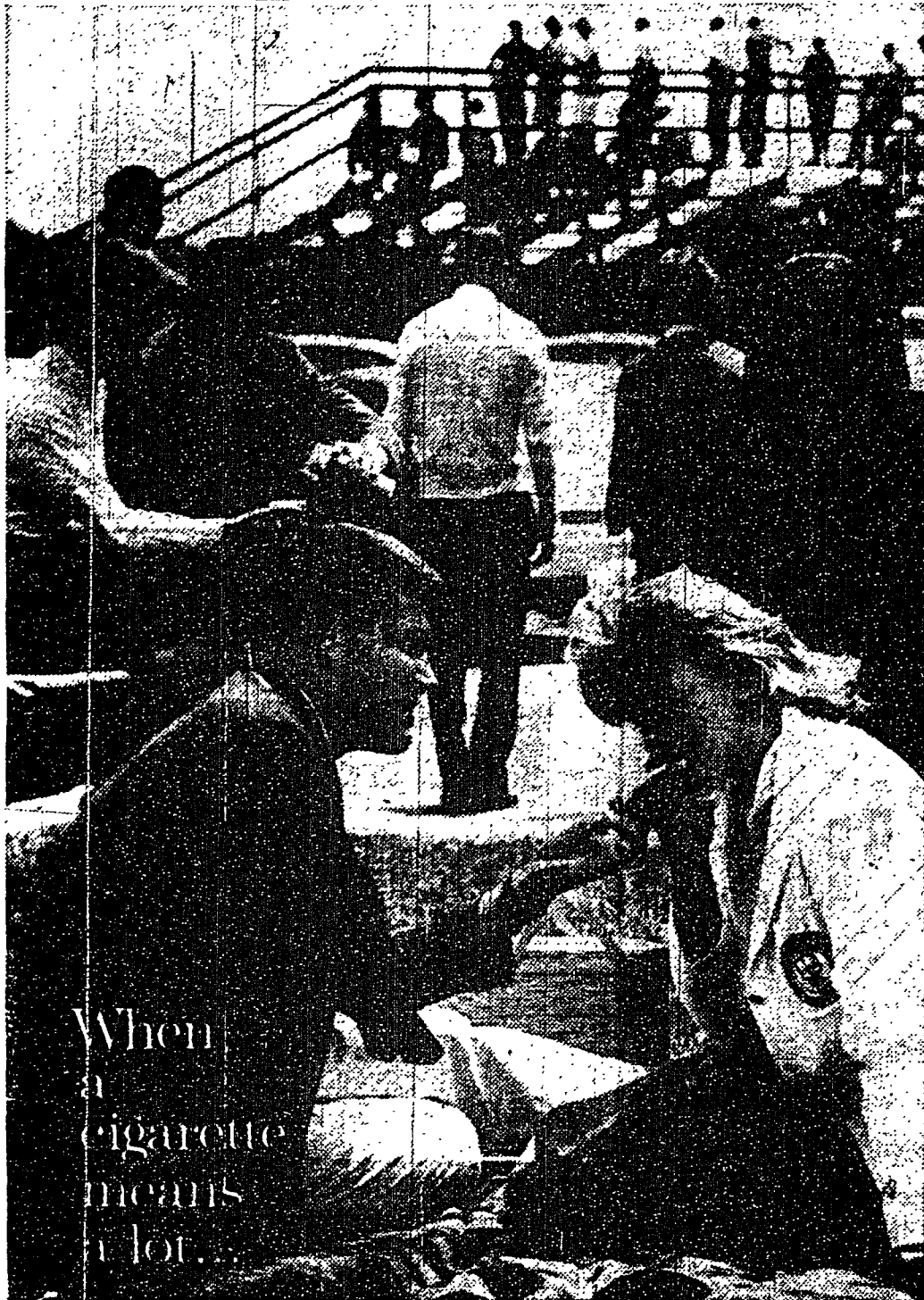
Phi Gamma Delta, last year's runners-up, walloped Delta Phi 20-0, in a game which saw Phi Gam quarterback John First pass

for two touchdowns and run for another.

John Zabatta scored two touchdowns and kicked a pair of extra points to lead Phi Kappa Theta in its 20-0 drubbing of Sigma Alpha Mu. The other score came on a seven yard pass from John Burcin to Larry Smith late in the game.

Eric Whorral intercepted a pass and moments later scored the lone touchdown of the game on a 5-yard pass play as Alpha Chi Rho blanked Pi Lambda Phi, 9-0. Mike Bullock later added a 23-yard field goal to complete the scoring.

In a tight defensive game, Lambda Chi Alpha nipped Chi Phi 1-0 in overtime. The teams were deadlocked at 0-0 in score and 4-4 in first downs as time ran out. In the extra period, Lambda Chi picked up the win on yardage.



When a cigarette means a lot...

## get Lots More from L&M




more body in the blend  
more flavor in the smoke  
more taste through the filter



And L&M's filter is the modern filter—all white, inside and outside—so only pure white touches your lips.

Enter the **LM GRAND PRIX 50**  
For college students only! 50 Pontiac Tempests FREE



**Holiday Inn**  
Family Style  
**CHICKEN DINNER**  
complete dinner \$1.95  
Childs Portion \$1.00  
EVERY SUNDAY at  
the HOLIDAY INN of STATE COLLEGE.  
Served in Our Coffee Shop and Tiki Dining Room

**CHIMES Will Sell**

**LICK 'EM LIONS LOLLIPOPS**

on Sat., Oct. 20th at the game

Profits will be used for scholarships