

Browning to Feature 3 Composers' Music

Barber, Schumann and Debussy will be featured on concert pianist John Browning's program at 8:30 p.m. Saturday in Schwab. Browning's appearance is being sponsored by the Artists Series and is the first on the year's schedule.

Student ticket distribution will begin at 1:30 p.m. today at the Hetzel Union desk. To get a ticket, a student must present his matriculation and activities cards. Non-student tickets will go on sale at 9 a.m. tomorrow, also at the HUB desk. These tickets are priced at \$1.50.

BROWNING has won acclaim throughout the world for his playing, although his career has not been long. He was recently hailed for being one of the artists honored at the opening of the Philharmonic Hall in the new Lincoln Center in New York City.

Since the start of his career in 1954, Browning has been the recipient of three major musical awards. In that year, at the age of 20, he was the winner of the Steinway Centennial, a nationwide contest sponsored by the National Federation of Music Clubs. In 1955, he received the Leventritt award, which gave him the chance to appear in Carnegie Hall with the New York Philharmonic. In 1956 he received from Queen Elisabeth of Belgium the Gold Medal of the International Concours in Brussels.

SINCE THEN, critics have been giving him impressive reviews wherever he appears. After a re-



JOHN BROWNING

cent. concert in New York City, Alan Rich of the New York Times said, "Browning's way with the music was spectacular. He tossed off the difficulties with which the score bristles as if they were child's play, and he rose equally well to the demands of the work's tender movements."

For Saturday's concert, Browning will play Couperin's "Pieces de Clavecin," Chopin's "Fantasy in F Minor," Barber's "Sonata, Op. 26," Debussy's "Preludes" and Schumann's "Etudes Symphoniques."

Proffitt Explains Menu Code Numbers

The Food and Housing Department has adopted code numbers to refer to specific cold plate dinners on printed menus posted in the dining hall areas. Robert Proffitt, director of housing and food services, explained that the ingredients for such plates are too numerous to be printed in the limited space on the menu schedules. Each code number refers to filed recipes in the individual dining halls, he explained. Diners 1A, 2A and 3A consist of turkey, chicken and tuna salads respectively, with different fruits and garnishes.

IRE - AIEE*
MEMBERSHIP DRIVE
 TODAY and THURSDAY
 Oct. 3 and 4
 Lobby Electrical Engineering Building
 — Join Now —

* Institute of Radio Engineers—
 American Institute of Electrical Engineers

ATTENTION
ALL FRATERNITIES
 REGISTER NOW FOR
IFC HOMECOMING
LAWN DISPLAY
 AT THE HUB DESK

Registration Deadline
 Is Friday, Oct. 5, 1962

New College Diner

USG Congress Will Consider Bill Inviting Visitors to Gallery

The only item of business which appears on tonight's Undergraduate Student Government Congress agenda is a bill to send letters to all interest groups on campus inviting them to have representatives present at USG meetings as members of the gallery.

THE PROPOSAL, sponsored by Kathryn Johnson (South), was initially recommended by the USG workshop at the Student Government Encampment.

The congressmen are also slated to consider four appointments, five committee reports and an executive report.

The pending appointments are for the posts of USG parliamentarian, Artists Series Committee, Election Commission and chairman of an Away Weekend Committee.

THE COMMITTEE reports concern Homecoming, USG tutoring service, the National Student Association's Congress, Encampment, and the Elections Commission. The executive report will be an

explanation of a proposed student life insurance policy in addition to the accident and sickness policy presently offered by student-government.

FRATERNITY NEWS LETTERS
 Letterpress • Offset
 Commercial Printing
 112 E. COLLEGE AD 8-3725

TV RENTALS
 by day, week, month
 TELEVISION SERVICE CENTER
 at State College TV
 232 S. Allen Street

BIKE REPAIRS PARTS ACCESSORIES
 Western Auto
 Satisfaction Guaranteed
 112 S. FRAZIER ST.
 AD 7-7332

The University Theatre

Presents The

CURTAIN RAISER

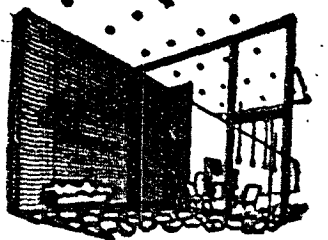
for all students interested
 in theatre on campus

IT'S FREE FOOD ENTERTAINMENT

THURS. 7:00 -
 OCT. 4 8:30 P.M.

SCHWAB AUDITORIUM

PENN STATE PLAYERS



Through the Looking Glass

with Gabbli

Summer-Fall - Winter - Spring. Yes, if my recollection is correct, those are (or I should say were) the four seasons of the year and they supposedly occur at certain parts of the year. But, there are exceptions to this rule, and State College is one. I have yet to figure out what season it is here, or maybe it is a combination. Or is it Indian Summer (or more appropriately Indian Winter)? In a few days I just might find snow on the ground as I hop out of the rack — and then, of course, it will be 70 degrees outside in the afternoon. Actually, one of the solutions to this whole mess is to stay in bed all day. It would solve the weather problem but cause many many other problems. Ethel Messerve's can solve many problems concerning this weather catastrophe. Our motto is BE PREPARED!!

COLD HANDS??

That's the opposite of cold feet, naturally! A pair of gloves will do the trick. But not just any old gloves. How about a pair of leather ones — or maybe you prefer wool — or a combination of both leather and wool (a compromise if you like both kinds!)

Now about that head of yours (and I don't mean what's inside it!) You can't possibly have warm hands and cold head. So treat yourself to a winter knitted hat — a stocking-type hat — with or without a cuff. It will keep your head warm (it doesn't guarantee anything else!) Only \$4.95. Maybe you prefer barets . . . only \$4.00.

HOI-HOI-HOI!

Hark, that's Santa's laugh I hear. It is a reminder that Christmas is sooner than you think (although it may be 60 or 70 degrees outside!) Now is the time to order your Christmas cards — at Ethel Messerve's, of course.

Ethel also has Halloween cards — for all you spooky characters. A complete selection of contemporary and studio cards can also be found at Ethel Messerve's.

That's all for now. I hope you are all used to classes by now.

So long,
 Gabbli

Ethel Messerve

112 E. College Ave.