

Variety of Publications Serve Campus Readers

University students are served by a variety of publications providing humorous, news and photographic coverage of the campus and individual college scene.

Froth is the campus humor magazine, which is circulated eight times during the year. Each issue parodies campus subjects. The titles range from "Greeks" to "animals," and regular columns such as "Campus Calendar" and "Mug and Jester" are featured.

THE DAILY COLLEGIAN is a student-operated newspaper which is published Tuesday through Saturday mornings. Eight thousand copies are circulated each day and are read by an estimated 15,000 people.

Students staff both the business and news writing operations of the Collegian. They are advised by an executive secretary of Collegian, Inc., the publisher chartered by the state.

The Collegian publishes editorials, cartoons, campus news and sports, plus national and international news received from the Associated Press wire service.

THE PAPER is uncensored by the faculty and is supported by advertisements, circulation revenues and allocation from student fees.

Interested students begin work on the paper by attending a candidate school which is under the direction of the board of editors.

For students interested in yearbook work, La Vie, the University yearbook, is published every June.

Work on the 1963 book began during the summer term and will continue throughout the year. Plans for this year's book include more student participation in art and layout work.

STUDENTS who wish to work on the yearbook should contact the La Vie office. La Vie holds an annual training program.

The Spectrum is the official publication of the Colleges of Chemistry and Physics, Engineering and Architecture and Mineral Industries.

It is a student-published magazine which features scientific

knowledge and current topics. A staff of approximately 100 students produces the magazine each month.

La Critique is a student magazine which reviews campus policies and serves as an outlet for student opinion and creative thought. Essays, short stories and poetry are featured. It is published quarterly and was founded in 1960.

NEWS AND VIEWS is an official publication of the College of Home Economics and serves to give students of that college journalism experience. It is published four times each year and features articles of special interest to students in home economics.

Pivot is published by the students of the Poetry Workshop (English 113). It appears during the spring, and is under the direction of Joseph Grucci, associate professor of English.

In addition to these publications, newsletters and papers are distributed by individual college councils.

Godbey Receives Posts Of Assistant Dean, Prof

Gordon C. Godbey has been appointed assistant dean for continuing education in the College of Education and professor of education. His appointment was effective July 1.

Before coming to the University, Godbey was director of the Division of University Extension and associate professor of education at the University of Delaware.

Juliet Room

is fashion and fashion costs no more . . .

Town & Country Special

Black or Brown Calf Mid-Heel Pump **\$10.99**

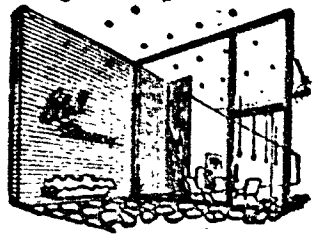


Penny Loafer Sandler **\$8.99**



P. F. Sneaks **\$4.69**

New Fall Colors — Adler Knee Socks **\$2.00**



Through the Looking Glass

with Gabbi

Welcome and welcome back. (Must include the entire crew — frosh and upperclassmen — since there are some amongst us). Yes, I'm still here — a perennial student — that's me! Who am I? (Don't look at the bottom of the page — oops, you did!) Yes, I am Gabbi.

Let me make some introductions. Did you pass or go into an exclusive looking store on East College Avenue? You must have. That's Ethel Meserve's. But don't let the front of the store fool you. Just walk into Ethel's and look around and you'll find beautiful and unusual gifts and items — reasonably priced too, to fit your budget (if you're so lucky as to be able to keep track of your expenses.)

A B C . . .

Did you say you do not know the rest of the alphabet? If so, I suggest that you tear it since it comes in handy, at rare moments. You'll need it for all those letters you do plan to write while here at State? Don't let me catch you using scratch paper. Ethel has all types of stationery, but you Frosh I am sure want Penn State stationery. If you really want to be newsy, PSU paper in white, light blue, light coral, and pink with the PSU insignia engraved on each sheet. For just a note, Ethel has PSU informals in white with the same emblem. The price? Yes, I'll divulge that secret — why keep it to myself. The stationery, \$1.00 and the informals are \$1.50 a box.

TELL ME A STORY

From a seed comes a tree and from a tree comes seeds . . . Once upon a time there lived a seed, but this was no ordinary kind of seed. Its ancestors — also, special-type seeds. This seed, along with its brothers and sisters, was picked off the parent tree. Since they were unusual and possessed extraordinary characteristics, they were not replanted. No, not that — too common for them. Instead, they were used for beads and beads and beads (this was a large-type family).

Put them all together in a rope of beads, and what do you have — **JOB'S TEARS**. Yes, this strand of beads — two yards long — is as unusual looking as its name. In a dozen assorted colors. And the price, only \$1.00. Just the right type thing to match your outfits.

Now that I have introduced you to Ethel Meserve's, stop in tomorrow. Buy or Browse. Tell them Gabbi sent you.

So long,

gabbi

Ethel Meserve

112 E. College Ave.

AWS Sponsors Varied Projects

Fireside chats, service projects and residence hall art exhibits are among the community projects of the Association of Women Students, the governing body for women students.

AWS is composed of three branches — legislative, executive, and judicial. The legislative branch is composed of the members of eight community councils.

SEPARATE COUNCILS are elected for Pollock, South Halls, East Halls, West Halls, North Halls, Atherton, Simmons and McElwain.

The executive branch is composed of officers elected each spring. These officers are president, first and second vice presidents, secretary and treasurer.

The officers and the president and treasurer of each community council make up the AWS Senate, which makes rules involving the entire women's community.

Representatives from the Panhellenic Council, the Women's Recreation Association and AWS standing committee heads also sit as members of Senate.

THE FUNCTION of the judicial branch is to hear and decide punishment in cases concerning breaking of women's rules. It consists of community judicial boards and a central judicial board, which hears cases involving more serious infractions or those referred or appealed from a local board.



when you unpack . . .

Your college wardrobe is bound to be a little travel weary. It's a good time to get acquainted with Balfurd Careful Cleaners.

We've been serving the clothes care needs of students for years and years, quickly, dependably and at nominal cost. We would like to serve you, too! Whatever your need . . . those hurry up jobs of cleaning and pressing a suit or skirt, quick little alterations, expert shirt laundering, shower-proofing or complete laundry service . . . Balfurd handles all with matchless care.

You'll find two Balfurd stores convenient to the campus. Stop in at the one nearest you and get acquainted.

Balfurd
Careful Cleaners + Launderers

111 S. GARNER ST.
307 W. BEAVER AVE.



BIKE

REPAIRS
PARTS
ACCESSORIES

Western Auto

New Bikes — 1 yr. Guarantee
112 S. FRAZIER ST.
AD 7-7392