



Seniors Begin Alumni Drive

Class of 1962 Seeks To Enlist All Members

By JOHN BLACK '62

The Class of '62 will attempt this week to insure that its members will maintain an active and direct contact with the University throughout the rest of their lives.

About two hundred volunteer workers from the class will try to "sell" their classmates on the idea of joining the Alumni Association and "taking Penn State with them."

"WE HOPE THAT all of the members of the class will take advantage of the opportunity to remain a part of the University and work for her betterment after they graduate by participating in the Alumni Association," Dave Grubbs, class president said after a kickoff meeting of class agents Sunday night.

Seniors are offered membership in the association at the reduced rate of \$2 for the first year if they sign up before commencement. After that the regular rate of \$3 will apply.

A \$5 savings may be realized on a \$75 life membership if a senior makes his pledge before graduation. Life memberships may be paid off in yearly installments of \$10 and \$15.

Seniors may join when their class agent contacts them or by signing up in the Alumni office in 104 Old Main, Phil Steinhauer, co-chairman of the drive, said.

GRUBBS AND STEINHAUER, assisted by an executive committee of Joan Cavanagh, Ervin Hill and John Black, planned the senior week drive.

Seniors who are heading the drives in their respective colleges are Richard Criley and Richard Reiter, Agriculture; Sandra Binder and George Haney, Business Administration; Robert Harrison and Richard Kelley, Chemistry-Physics; Susan Huston and Thomas Hamer, Education.

Ervin Hill and Gerald Logue, Engineering and Architecture; Joan Thiel and James Alexander, Home Economics; John Withner and Pat Dyer, Liberal Arts; David Reynolds, Mineral Industries and Stuart Bischoff, Physical Education and Athletics.

Class agents for the respective colleges are:

AGRICULTURE—Hugh Barr, Glenn Huss, Larry Deaven, Emory Etter, Peter Ferrell, Howard Kelly, James Kennedy, Steven Moorhead, Mary Morrow, Richard Moyer, James Pierce, Lois Rakus, Frank Resides, Leon Kiegel and Harry Winter.

BUSINESS ADMINISTRATION—Robert Barraclough, Bruce Bitwin, Sherwin Birman, Anne Chernofski, Robert Dufner, Thomas Foy, Paul Kemmerer, Ronald Koot, William Laman, Wilmer Leimbach, Martin Levin, Spencer Melham, Howard Needleman, Roger Owens, Michael Proggren, Michael Raiser, James Roberts, Stephen Rumbaugh, Charles Schurz, William Slothower, Keith Straley, David Summers and Wayne Ush.

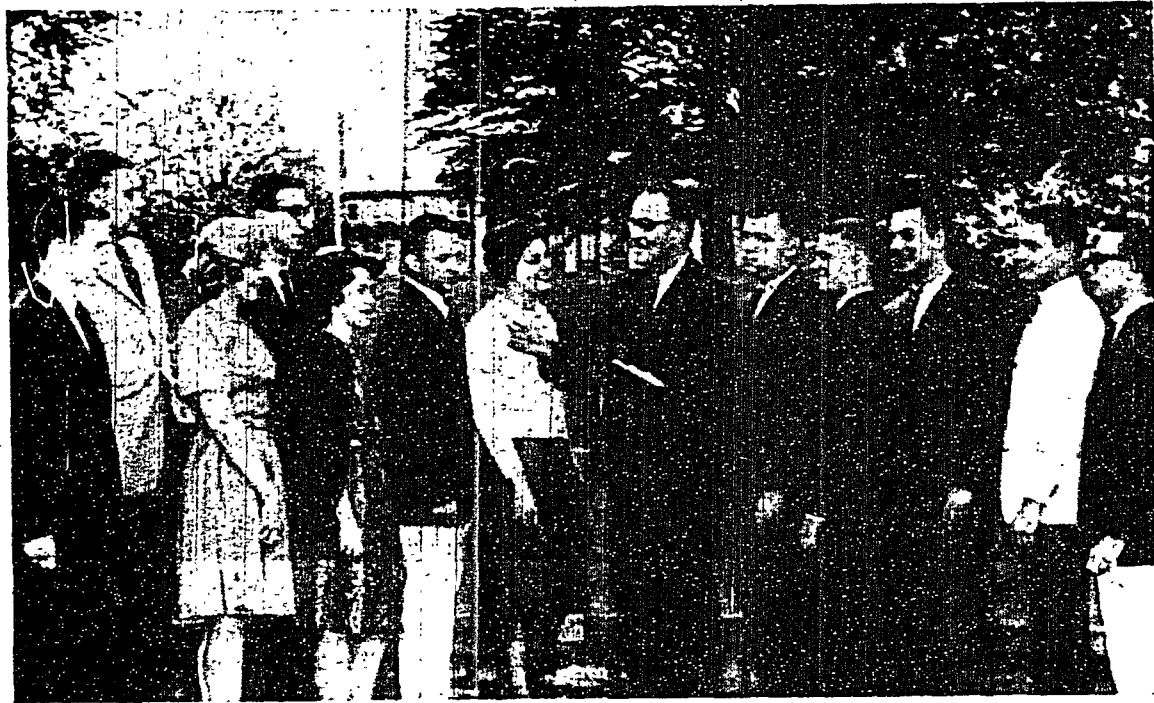
CHEMISTRY and PHYSICS—Duane Alexander, William Barber, Aviva Brown, Nicholas Fallone, William Gardner, Donald Getz, John Glassburn, Michael Griffin, Eugene Gruner, Paul Haberman, Patrick Hagan, Clifford Hunt, Walter Kearney, Edward Kotchl, Thomas Landes, Jeffrey Lightner, Quentin Loney, Mara Markova, Sara McLanahan, Robert Nielsen, Rodney Nunemaker, Eldon Reel, Harry Rein, George Saba and Basil Washo.

EDUCATION—Barbara Adams, Lee Anders, Joan Biddle, Virginia Burton, Jack Christensen, Cynthia Davis, Thaddeus Ferguson, Harry Finkelstein, Michael Forry, Patricia Frest, Robert Friedline, Jerry Galner, Carl George, Rebecca Clifford, John Gilbert, Harry Hager, Ruth Hall, Andrea Hermann.

Kathryn Hill, Dorothy Janus, R. Linda Kataman, Robert Kennedy, Charles Kimmel, Susan Klepper, Pauline Knowles, Barbara Maley, Walter McClure, Jo Ann McFadden, Jeanne Melley, William Molyneux, Nora O'Reilly, Nancy Schiffman, Kurt Ullrich, Eleanor Voss, David Ward, Wayne Weber and Paulette Zander.

ENGINEERING and ARCHITECTURE—George Ake, John Bailey, Blair Bice, David Boland, David Briggs, Jerome Conner, Marvin Dunlap, Stephen Engle, Robert Fry, Jerry Hans, David Higginbotham, Barry Kesselman, Kerry Kuehner, Paul Kosak.

(Continued on page six)



—Collegian Photo by John Beauge

SENIOR WALK AND OLD MAIN in the background provide a perfect setting for a meeting of Ridge Riley, executive secretary of the Alumni Association, and the Alumni drive college chairmen. From left to right are Dick

Kelley, Jim Alexander, Sandra Binder, Bob Harrison, Pat Dyer, Stu Bischoff, Sue Huston, Riley, Jerry Logue, George Haney, Dave Reynolds, Dick Reiter and Dick Criley.

Alumni Association Links University and Graduates

By JOHN BEAUGE '62

Over 68,000 alumni of the University maintain a link with the campus through the Alumni Association.

Begun as an informal organization in the 1870's when a Harvest Home Week was held each spring to welcome graduates back to the college farms, the association was officially chartered in 1874. A year later alumni seats were provided on the Board of Trustees.

THE PERMANENT campus headquarters, which are located

in Old Main, is under the direction of Ridge Riley, executive secretary, and Ross B. Lehman, assistant executive secretary.

The Association coordinates and sponsors the activities of 68 alumni clubs and maintains a communications system between Penn State and its alumni.

In addition it keeps records of the graduates and supplies information to the alumni clubs and others who request it.

Seniors who purchase a membership in the Association receive several publications each year.

The Alumni News and the Football Letter are mailed to dues paying members of the Association.

ALL ALUMNI, whether Association members or not, receive copies of the Penn Stater, a quarterly newspaper written especially for University graduates.

Two special weekends are held each year for the alums. The Alumni Homecoming Weekend, which will be Oct. 19 - 20 this year, is held each fall. Every June the Alumni Institute and Class Reunions are held.

Membership in the Alumni Association entitles graduates to receive ballots for electing three alumni members to the Board of Trustees each year. Graduates who are not members may receive ballots if they submit a written request for them.

Alum Scholars Named Yearly

Fifteen students, who have compiled outstanding records in high school, enter the University each year on Alumni Memorial Scholarships under an awards program initiated by the Alumni Association in 1955.

The purpose of the scholarships is primarily to honor academic achievement. In order to hold the scholarship a recipient must maintain a 3.0 All-University average. If a student's average falls below that mark, the scholarship is given to another student in the same class. Thus, there are always 60 alumni scholars on campus.

THE PENN STATE Alumni

Fund began the program in honor of the alumni who lost their lives while in the service.

The scholarship winners receive \$480 a year which is equal to the in-state tuition. Out of state winners also receive the same amount.

SELECTION of the Alumni Scholars is based on high scholarship, need, activities, leadership and citizenship.

The Penn State District Alumni Clubs have the job of screening high school graduates in their own districts for the best possible candidates.

Final selection of recipients is made by a University awards

(Continued on page eight)

Members Receive 3 Publications

The Alumni Association, which is published through its three publications—The Penn State Alumni News, its supplement the Football Letter and The Penn Stater—maintains constant contact with graduates and former students of the University.

The Alumni News magazine is sent out seven times a year to the paid members of the association. It includes stories, features and photographs on the professions of Penn State graduates as well as current campus news.

Over 15,000 alumni receive the

monthly.

THE PENN STATER is a four-page tabloid-size newspaper sent to all alumni four times a year. Approximately 68,000 alumni now get the Penn Stater, which includes news of the University and alumni.

In the fall, the Football Letter is added to the list of publications. Written by Ridge Riley, executive secretary of the association, the letter is sent out the Tuesday after every football game to members of the Alumni Association.

Alumni Fund Aids University Growth

By LYNNE CEREFICE '62

A total of about \$185,000 from 8,000 contributors has already been collected for the 1962 Alumni Fund, which will be closed June 30th. Robert E. Beam, director of the Fund said yesterday.

This year's figure has brought the total collected since the Fund's establishment in 1953 to over \$1,800,000.

THE ALUMNI FUND is an annual program through which alumni from all parts of the country are asked to make donations to participate in the growth and progress of the University, Beam said.

Included among the Alumni Fund's many projects, are scholarship and loan funds to provide college educations for exceptional students.

The most important of these are the Alumni Memorial Scholarship Fund, The Alumni Interna-

tional Student Fund, the Student and the building of the Stone Loan Fund and the Levi Lamb Valley Dam.

Money collected by the Fund each year also goes to Patten Scholarship Fund, the first scholarship program established for entering freshmen, 15 new Alumni and the Commonwealth Campuses. Scholars are named each year. The three main methods for applicants are screened by local Alumni clubs across the country, mail, through personal contact by and recipients are selected on the basis of high scholarship and financial need.

The Alumni International Student Fund, initiated this year, grants financial assistance to needy undergraduate international students.

The Student Loan Fund includes various loans and grants which are made available to undergraduates in need of financial assistance. The Levi-Lamb grant-in aid program assists worthy athletes.

OTHER ALUMNI Fund projects in past years have included the construction of the Helen Eakin Eisenhower Chapel, the purchase of furnishings for the Hetzel Union

SEVENTY COMMERCIAL enterprises employing almost 2,000 University alumni compose the Corporate-Alumnus Gift Matching Program. Each of the 70 companies will match any contribution made by an employee who is an alumnus of the University. The program was initiated by the General Electric Corporation.

With a little over a month remaining in this year's Fund construction, the purchase total is expected to be at least equal to the \$208,488.18 collected in 1961.