

Timetable Changes Published for Spring

(As a public service, The Daily Collegian is printing a supplement to the Spring Timetable, listing all changes and additions for Spring Term 1962.)

x Room Change
 * Time Change
 x Room and Time Change
 x Section Added

ACCOUNTING
 2.4 Dropped
 2.6 Dropped
 2.7 MWF 4 - 112 B L x
 2.8 MWF 4 - 112 B L x
 2.10 Dropped
 5 Cost Accounting (2) - MWF 4 - 107 Boucke

AUDITING (2) - MWF 3 - 201 Boucke

AGRICULTURAL AND BIOLOGICAL CHEMISTRY
 668 Biochemical Literature (1) - Appt - 110 F L

AGRICULTURAL ECONOMICS
 6.1 M F 3 - 109 A B, W 4, 5 - 118 Flx
 6.2 M F 3 - 109 A B, T 1, 2 - 104 Wex

6.3 M F 3 - 109 A B, Th 1, 2 - 104 Wex

AGRICULTURAL ENGINEERING
 501 Advanced Farm Machinery (1-4) - Appt - 102 Ax E

AIR FORCE ROTC
 3.25 T Th 4 - 201, 202 Wagner x

ANIMAL NUTRITION
 1 T Th 1 - 10 Sparks x

ANTHROPOLOGY
 31 Dropped
 41 Folk Society (3) - MWF 1 - 225 Sac
 46 Dropped
 401 Dropped
 548 Seminar in Anthropology (2) - Appt - 235 Sparks - Sanders

ARCHAEOLOGY
 1 MWF 4 - 111 Boucke x
 405 Archaeology of the New World (3) - MWF 3 - 301 E E - Sanders

ARCHITECTURAL ENGINEERING
 6 M 2, T Th 3 - 322 Sac
 9 T 4 - 215 H B, T 4 Th 5, 6 - 404 Sac x

23.1 Appt - 302 Sac, MWF 5, 6 - 332 Sac x
23.2 Appt - 302 Sac, MWF 2, 3 - 321 Sac x
23.3 Appt - 302 Sac, MWF 5, 6 - 321 Sac x

402 Architectural Engineering (3) - T Th 5, 1, 2, 3 - 322 Sac
403 M 2 - 105 O L, Th 2 - 125 Sac, T 1, 2, 3 - 406 Sac x
432 T Th 3, 222 Sac, M 1 - 322 Sac, W 1, 2 - 321 Sac x

445 Architectural Engineering Seminar (1) - Appt - 133 H B - Albright
542 Advanced Problems and Research in Architectural Engineering (2-10) - Appt - 133 H B - Albright
545 Architectural Engineering Seminar (1) - Appt - 133 H B - Albright

ARCHITECTURE
 107 T Th 1, 2 MWF 5, 6 - 404 Sac

ARMY ROTC
 6.6 Dropped
 9.6 Dropped
 12.6 Dropped

ART AND ARCHITECTURAL HISTORY
 22 History of Costume (1) - Th 1, 2 - 112 Sac

ART EDUCATION
 3.1 T Th 4, 5 - 134 Tem x
 3.2 T Th 4, 5 - 135 Tem x
 3.3 T Th 4, 5 - 134 Tem x
 3.4 T Th 4, 5 - 133 Tem x
 3.5 T Th 4, 5 - 141 Tem x

ASTRONOMY
 30.5 T Th 4 - 105 W L, F 5, 6 - 216 O L

BACTERIOLOGY
 412.2 T Th 2 - 204 F B, T Th 3, 6 - 323 Sac

BROADCASTING
 230 M F 4 - 113 Boucke

492 Dropped

CHEMICAL ENGINEERING
 465 Chemical Engineering Research (1-5) - Appt - 119 Ch E

535 Applied Reaction Kinetics (3) - Appt - 112A Ch E - Enrd

CHEMISTRY
 12.1 M F 2 - 119 O L, W 2, 3 - 216 Whit x
 12.5 M 5 - 119 O L, Th 4 - 119 O L, W 5, 6 - 106 Whit x

13.1 Dropped
13.10 W 5 - 119 O L, T 4 - 109 O L, M F 5, 6 - 301 O L x

452 Physical Chemistry (3) - MWF 1 - 201 Boucke - Aston
453.2 Dropped
455 Dropped
451 T Th 1 - 116 O L x
454 Dropped
453 Dropped

CHILD DEVELOPMENT AND FAMILY RELATIONSHIPS
 330 W 6 - 105 H Ec So, Lab by appt x

CIVIL ENGINEERING
 42.3 Dropped

CLOTHING AND TEXTILES
 100.2 Dropped

COMMERCE
 306 Dropped
 323.1 Dropped

ECONOMICS
 2.5 MWF 4 - 323 Boucke x
 5.6 T Th 3 - 323 Boucke x
 215.1 T Th 3 - 301 Boucke x
 223.2 MWF 4 - 305 Boucke x

EDUCATIONAL SERVICES
 468 Introduction to Vocational Rehabilitation (3) - MWF 3 - 417 Boucke - Hybert

417.3 (3 credits) MWF 3 - 316 F L x
677 The Administration of Public School Education for Atypical Children (2) - M W 2 - 205 H B - Hottel

ELECTRICAL ENGINEERING
 34.1 Electronics (3) - T Th 3 - 219 E E T 3 - 207 E E
 34.2 T Th 3 - 219 E E, Th 3 - 207 E E

134.1 Electronics Laboratory (1) - M 1, 2, 3 - 305 E E
135.1 F 1, 2, 3 - 305 E E
471 MWF 4 - 232 H B x

ELEMENTARY EDUCATION
 241.5 M W 2, F 2, 3 - 3 Lib x
 433.4 M F 3 - 207 Boucke, W 4, 5 - 207 Boucke x

ENGINEERING
 *2.15 M 1 - 230 E E, M 2 - 12 E E x
 *2.16 M 5 - 230 E E, M 6 - 12 E E x
 *2.18 T 1 - 230 E E, T 2 - 12 E E x
 *2.19 T 3 - 201 E E, T 4 - 12 E E x
 *2.20 W 1 - 201 E E, W 2 - 12 E E x
 *2.21 W 4 - 204 F L, W 6 - 12 E E x
 *2.22 Th 1 - 207 E E, Th 2 - 12 E E x
 *2.23 Th 3 - 202 E E, Th 4 - 12 E E x
 *2.24 F 1 - 220 E E, F 2 - 12 E E x
 *2.25 F 3 - 200 E E, F 4 - 12 E E x

*Meets Th 1, 110 E E on March 29, 1962 ONLY

ENGINEERING MECHANICS
 118 M T W F 1 - 112 Sac x

213.2 M T W F 1 - 121 M I x
 213.5 M T W F 3 - 215 H B x
 213.4 M T W F 3 - 203 Eng A x

ENGLISH
 1.17 TThS 1 - 106 Wex x
 1.18 TThS 1 - 106 Wex x
 1.19 TThS 1 - 106 Wex x
 1.20 TThS 1 - 106 Wex x

10 Remedial English (0) - Appt - 233 Sparks - Hill
103 MWF 3 - 117 Sac x
113.2 T 3, 6 - 217 Boucke, 1 per by appt x

119.5 MWF 4 - 216 H B x
123.1 MWF 2 - 109 Wex x
125.2 MWF 3 - 214 Boucke x
125.3 MWF 5 - 108 M E x
133.4 TThS 1 - 301 Eng A x
446 Dropped
522 Old English Literature (3) - T 5, 6 and 1 per by appt - 206 Sparks - Jewkes
574 Dropped
596 Dropped

FOODS, NUTRITION, AND HEALTH
 100 T Th 1, W 3, 5 - 206 E Ec

119.1 Elementary Foods (2) - T 2 Th 3, 1, 2 - 108 H Ec - Guthrie
119.2 M 1 W F 1, 2 - 108 H Ec
453 T 4, 5 Th 6 - 208 H Ec

FORESTRY
 421.2 Dropped
 421.3 Dropped
 445.3 M F 5 - 105 For, F 1, 2 - 205 For x
 445.4 M F 5 - 105 For, S 2, 3 - 205 For x

465.2 Dropped
465.3 Dropped

FRENCH
 1.3R Dropped
 *1.5P Appt - 3 Sparks x
 1.1P thru 4P Dropped
 2.1P thru 4P Dropped
 *2.5P Appt - 3 Sparks x
 3.1P thru 10P Dropped
 3.11P T Th 3 - 304 W L x
 *3.11P Appt - 3 Sparks x
 4.6 MWF 1 - 324 H B x
 4.7 MWF 4 - 200 E E x
 4.8 TThS 2 - 403 Boucke x
 *20.1P Appt - 3 Sparks x
 30.1R MWF 5 - 129 Sac x
 34.2 MWF 5 - 127 Sac x
 490.2 Dropped

*Upon completing final registration the student will report to Room 3 Sparks Building for assignment to a sequence of 2 lab periods per week.

GENERAL HOME ECONOMICS
 311.4 Th 5 - 108 H Ec So x

GEOGRAPHY
 490 T Th 3, 2 Th 5 - 218 M S x

GEOLOGICAL SCIENCE
 1.1CP W 3 - 104 M I x
 6.1 S 2 - 121 M I - T Th 1, 2, 3 - 119 M I
 5.2 S 2 - 121 M I - M W 1, 2, 3 - 119 M I
 7.1 M F 1 - 229 M I, W 1, 2 - 209 M S x
 7.2 M F 1 - 229 M I, Th 5, 6 - 209 M S x

407 Appt - 209 M S x
417 Appt - 209 M S x
457 T 4 - 225 M I, S 1, 2, 3 - 4 M I x

GERMAN
 323 MWF 5 - 138 H Ec So x
 531 MWF 2 - 133 H Ec So x

GREEK
 25 Greek Literature in Translation (3) - MWF 4 - 206 B B - DeMerit

HISTORY
 13.5 MWF 6 - 204 Boucke - Spiess x
 170 MWF 3 - 222 Sac x

HOME MANAGEMENT AND FAMILY ECONOMICS
 415 Dropped

HOTEL FOOD SERVICE
 306 MWF 3 - 117 H Ec x
 308 MWF 3 - 223 H Ec x

HOUSING AND HOME EQUIPMENT
 206.2 MW 2 - 209 H Ec So, F 2 - 207 H Ec So x

INTERNATIONAL UNDERSTANDING
 300.5 MWF 4 - 211 Boucke - Maros x

JOURNALISM
 304 MWF 5 - 106 H Ec So x
 346 Dropped
 392 Broadcast News (3) - M W 4 - 207 EE, F 4, 5 - 220 H Ec
 444 T 2, 3 - 327 H B, 1 per by appt - 212 C B
 463 Dropped
 492 Dropped
 513 Current Problems in News Reporting and Editing (3) - Appt - 212 C B - Marbut

521 Dropped

LIBERAL ARTS
 501 Fundamentals of Linguistics (3) - Appt - 3 Sparks - Belasco and Curry

LIBRARY SCIENCE
 1 M F 1 - 3 Lib, Lab by appt - 301 Lib x

MECHANICAL ENGINEERING
 22.6 MWF 1 - 301 Eng C x
 22.5 MWF 3 - 301 Eng C x

32 Mechanical Engineering Laboratory (2) - M W 5, 6 - M E Lab
38 T 1, 2 Th 4, 5 - M E Lab
34.8 T Th 1, 2 - M E Lab
100 Inspection Trip (3) - June 11 to June 13 - Appt
103.5 MWF 3 - 214 H B x
104 Dropped
112.7 M F 1 - 311 M E, W 1, 2 - M E Lab x
110 Engineering Thermodynamics (4) - M T W F 5 - 202 E E
181 Mechanical Engineering Laboratory (1) - T 1, 2, 3 - M E Lab

MINERALOGY
 323 Igneous Petrology (3) - M F 3 - 219 M I
 323 Mineralogical Crystallography (3) - T Th 5 - 225 M I, Lab by appt - 114 M S - Vand

MINERAL PREPARATION
 400 Mineral Preparation Seminar (1) - Appt - 4 M I

NAVY
 313.3 T Th 2 Th 14 - 318 Wagner

NUCLEAR ENGINEERING
 410 Nuclear Engineering (3) Appt - 321 Sac - Kline
 501 Seminar in Nuclear Science and Engineering (3) - MWF 1 - 135 H Ec So x

PHILOSOPHY
 2.8 MWF 3 - 106 E E
 2.9 M W 5 - 121 Sparks, F 3 - 303 Wagner x
 4.3 M W 5 - 121 Sparks, Th 3 - 230 Boucke
 4.8 M W 5 - 121 Sparks, Th 3 - 230 Boucke
 4.9 M W 5 - 121 Sparks, F 3 - 211 Bor x
 4.9 M W 5 - 121 Sparks, T 3 - 316 Boucke x
 4.10 M W 5 - 121 Sparks, F 3 - 211 Bor x
 4.11 M W 5 - 121 Sparks, Th 1 - 300 A B x

PHYSICAL EDUCATION
 53D.2 (Men Only) MWF 3 - Sac x
 125.1 Dropped
 125.2 Dropped
 125.3 T Th 5 W 6 - 2 W B x
 125.4 T W Th 5 - 3 W B x
 490 TThS 1, T 5 - 241 Rec

PHYSICAL SCIENCE
 5 (3 credits) M T W 6 - 119 O L (credit change)

PHYSICS
 202.1L General Physics (4) - Th 5 - 117 O L
 202.1R M F 1 - 113 O L
 202.2R M F 3 - 101 Boucke
 202.3R M F 4 - 303 Boucke
 202.4R M F 5 - 408 Boucke
 202.5R M F 5 - 320 Boucke
 202.1P M 1, 2 - 212 O L
 202.2P M 4, 5 - 212 O L
 202.3P T 2, 3 - 212 O L
 202.4P T 5, 6 - 212 O L
 202.5P W 1, 2 - 212 O L
 202.6P W 4, 5 - 212 O L
 202.7P Th 1, 2 - 212 O L
 202.8P F 1, 2 - 212 O L

Quantum Mechanics (3) - Appt - 101 O L

POLITICAL SCIENCE
 10.3 MWF 2 - 301 Eng D x
 14 MWF 4 - 105 For x
 442.2 MWF 2 - 208 Boucke x
 572 International Administration (3-5) - T Th 5, 6 - 213 W L

PSYCHOLOGY
 401 MWF 3 - 124 H Ec So x
 427 Psychological Principles in Advertising (3) - MWF 2 - 206 Wagner

555 TThS 2 - 138 H Ec So x

ROMANCE PHILOLOGY
 551 Romance Philology (3) - Appt - 216 W L - Belasco (NDEA French Institute ONLY)

RUSSIAN
 525 Dropped

RURAL SOCIOLOGY
 514 Values in Rural Society (2) - Appt - 295 Wex - Frabhu

SECONDARY EDUCATION
 423 "MWF 1, T 1, 2, 3 - 111 Tyson x

443.3 M W 2, 3 per by appt - 403 Boucke x
 483 MWF 1, T 1, 2, 3 - 316 F L x

SOCIOLOGY
 3 MWF 3 - 127 H Ec So x
 516 TThS 3 - 123 H Ec So x

SPANISH
 1.3P Dropped
 1.4R Dropped
 1.1P thru 4P Dropped
 *1.5P Appt - 3 Sparks x
 2.1P thru 4P Dropped
 *2.5P Appt - 3 Sparks x
 3.1P thru 10P Dropped
 *3.11P Appt - 3 Sparks x
 3.7R Dropped
 3.8R Dropped
 4.4 TThS 1 - 312 Boucke x
 30.1R MWF 3 - 108 H Ec So x
 30.2R MWF 5 - 326 H B x
 *39.1P Appt - 3 Sparks x

*Upon completing final registration the student will report to 3 Sparks Building for assignment to a sequence of 2 lab periods per week.

SPEECH
 250.54 MWF 1 - 105 Boucke x
 250.57 MWF 4 - 301 E E x
 250.58 MWF 4 - 312 Boucke x
 250.59 MWF 5 - 202 Wex x
 250.60 MWF 5 - 101 Wagner x
 250.61 MWF 6 - 103 For x

ZOOLOGY
 24.4 TTh 3 - 10 Sparks, M F 3 - 315 F L x
 24.5 TTh 3 - 10 Sparks, M F 3 - 315 F L x
 24.6 TTh 3 - 10 Sparks, M F 4 - 315 F L x
 41 MWF 1 - 10 Sparks x

Speldel Praises-
 (Continued from page three)
 port the fans have given me.

PIPER WILL GO to the national tournament at Oklahoma State March 22-24. He finished second in the NCAA competition last year.

The lanky Lion expects his toughest competition to come from Jerry Frude of Wyoming and Marty Stewart of Iowa State. Would he like to meet Helvington at Oklahoma State? "You bet I would."

MEET THE WIVES OF THE WHITE HOUSE

INSIDERS

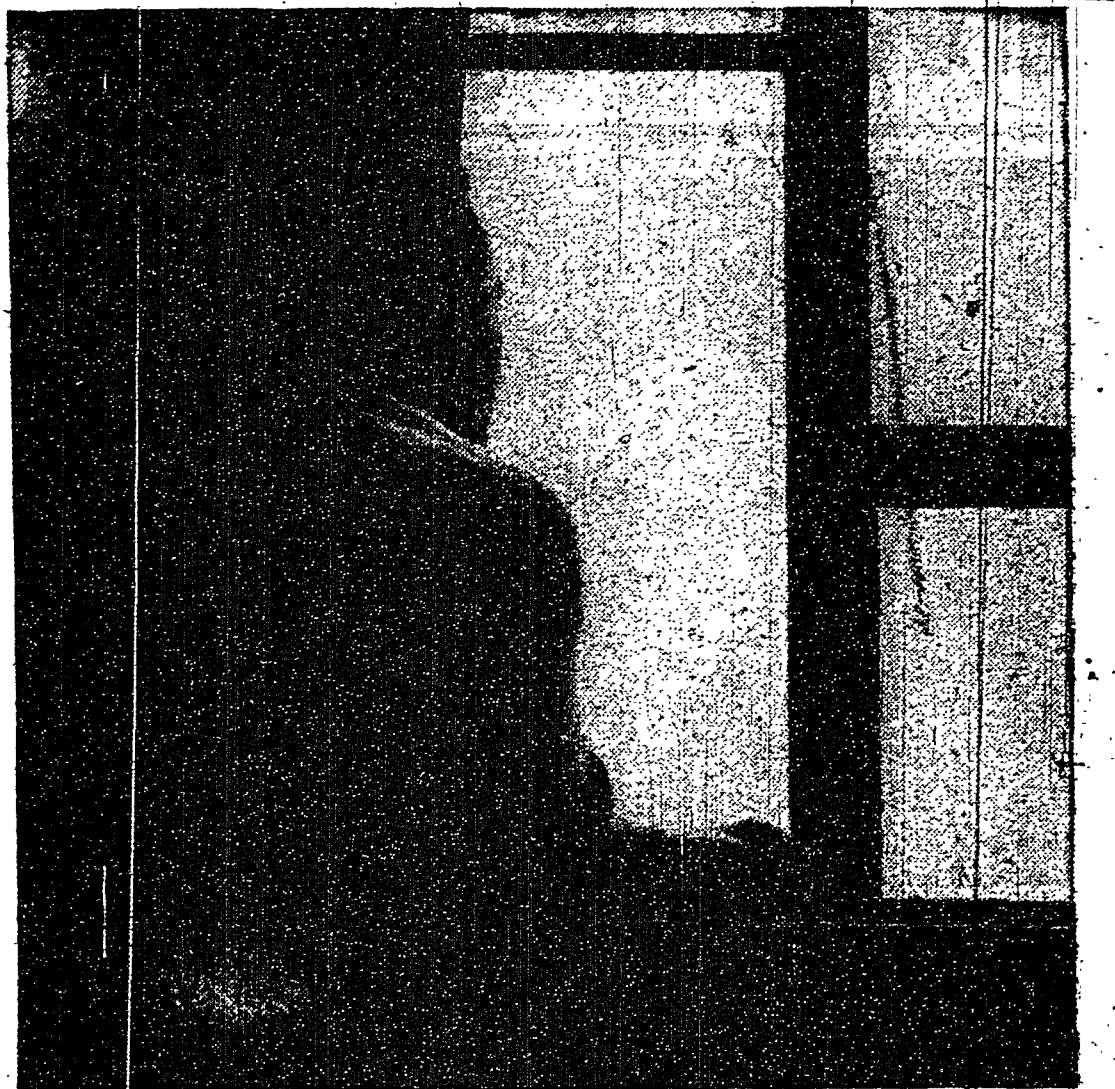
What's it like when Kennedy picks your husband for a key Washington job? In this week's Post, you'll meet the glamorous wives of the New Frontier. You'll learn how they entertain endlessly on a strict budget. How one outspoken lady caused her husband weeks of embarrassment. And why the Washington whirl isn't always a picnic. Also: Special 12-page guide "How to make the most of your money."

The Saturday Evening **POST**
 MARCH 17 ISSUE NOW ON SALE

BIKE

REPAIRS
 PARTS
 ACCESSORIES

Western Auto
 Satisfaction Guaranteed
 200 W. College Ave.
 AD 7-7532



How would you forecast your next few years?

Today, the young man planning his life realizes as never before that in today's world his own future is tied inevitably to America's future. How can he serve both?

Many college graduates, both men and women, are finding a rewarding answer on the Aerospace Team - as officers in the U.S. Air Force. Here is a career that is compelling in its challenge and opportunity. And it is a way of life

that holds the unsurpassed satisfactions that come with service to country.

As a college student, how can you become an Air Force Officer?

If you have not completed Air Force ROTC, Officer Training School provides an opportunity to qualify for a variety of vitally needed jobs in the Aerospace Age. A graduate of this three-month course earns a commission as a second lieutenant. Also open to college men is the Navigator Training program.

For full information - including the chance to obtain graduate degrees at Air Force expense - see the Air Force Selection Team when it visits your college. Or write: Officer Career Information, Dept. SC23, Box 805, New York 1, N. Y.

U.S. Air Force

FOR AMERICA'S FUTURE AND YOUR OWN... JOIN THE AEROSPACE TEAM.