

Pottsville Center Includes 2 Buildings

By DOROTHY DRASHER

(This is the second in a series of articles concerning the University's 13 Commonwealth campuses and centers. Today's article features the Pottsville center.)

While 75 students at the Pottsville center were studying languages, chemistry and mathematics courses on the second floor of the Bunker Hill school building in 1934, grade school children were learning their A, B, C's on the first floor.

THE SECOND FLOOR of the building served as the University's Pottsville center for the first few years after the center was founded.

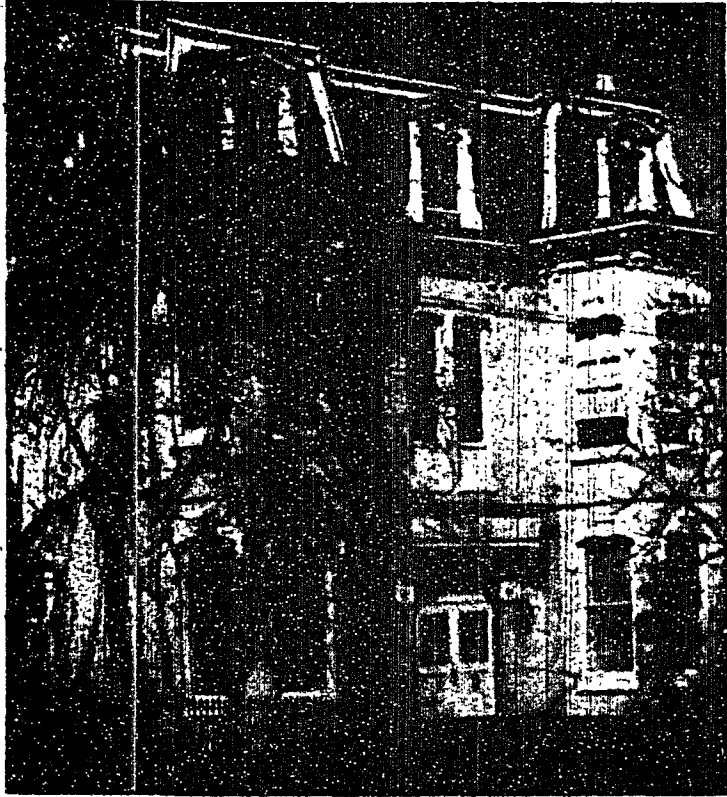
Less than three years later students and faculty at the center were using all the facilities of the Bunker Hill building. The school children were transferred to another building to provide room for the center's expansion.

In 1946, when post World War II enrollment reached 394 students, additional classroom facilities were secured in another school building. But this school was located 15 blocks from the other and students had to "commute between classes."

This commuting distance was shortened considerably the next year when Pottsville center officials purchased a large house, shown above, which was located only two blocks from the Bunker Hill building.

THE HOUSE is now used for administration and faculty offices and for some classrooms. The center will soon be expanded again. The University is planning to purchase a 40-acre site five miles from the center's present two buildings.

When the transactions for the



POTTSVILLE CENTER—This house is one of two buildings presently used for the Pottsville Center. Since its purchase in 1947 to provide facilities for the expanding center, the house has been used for both classrooms and offices.

site are completed the center will be relocated there. At present, 283 students are enrolled in 44 courses. During its 29 years, the center has enrolled over 3,200 full-time students and about 15,000 part-time, special, informal and war program in drafting and design training students in both day and evening classes.

TODAY ON CAMPUS

Choirs

The Netherlands Chamber Choir will present a concert at 8:30 p.m. in Schwab. Under the direction of Felix de Nobel, the choir will sing selections written in the sixteenth and seventeenth centuries, folk songs and contemporary selections.

The Meditation Chapel Choir, Section II, will present the second of a series of sacred music concerts at 9 p.m. in the Helen Eakin Eisenhower Chapel.

Tickets

Tickets for Saturday's Horace Silver concert in Schwab are on sale on the ground floor of the HUB from 9 a.m. to 5 p.m.

Applications

Application blanks for the outstanding senior in the college of education are available at the HUB desk. There is no average requirement. The deadline is 5 p.m. March 2. Applications should be returned to the HUB desk.

Lecture

John Robb will speak on "Better Red or Dead" at 6:15 p.m. in McElwain lounge. The talk, sponsored by the McElwain Religious Affairs Committee, is open to the public.

Other Meetings

Architectural exhibits, New Engineering Exhibition Hall, Chemical Engineering Society, Lecture, "Opportunities for

Chemical Engineers," 7:30 p.m., Alpha Chi Sigma
Chess Club, 7 p.m., HUB cardroom
Figure Skating Club, 8 p.m., 218 HUB

Inter-collegiate Council on Government, 7:30 p.m., 217 HUB
Meteorology Seminar, Lecture, "Development and Ideas in Micrometeorology," 3:55 p.m., Willard

Phi Epsilon Kappa, 9 p.m., 214 HUB

PSOC Canoe Division, 7 p.m., 112 Buckhout

SENSE, students for peace meeting, 7:30 p.m., Baptist Church, 400 S. Burrows St.

Sociology Club film, "Shades of Gray," 7:15 p.m., 214 Boucke
Women's Chorus practice, 6:15 p.m., HUB assembly

Panhel Elects Treasurer

Sandra Pohlman of Zeta-Tau Alpha sorority, was elected treasurer of the Panhellenic Council yesterday, Pamela Chadwick elections chairman announced last night.

Miss Pohlman defeated her two opponents, Donna Sutin, Alpha Phi, and Carol Eckhardt, Alpha Omicron Pi, in what Miss Chadwick termed a "fairly close" race.

Lord to Talk at Bucknell

Walton J. Lord, instructor in art and architectural history, will deliver a lecture, "American Painting in the 19th Century - From Allston to Weir" at the opening of an exhibition of 19th Century American Painting at Bucknell University, Lewisburg, Sunday.

Orientation Forms Due

Applications for women's orientation leaders for next fall are due Thursday.

The forms should be turned in to Mrs. Nancy M. Vanderpool's office, 129 Grange.

New College Diner

Downtown Between the Movies

SPRING WEEK
REMINDER:
COUNTRY APPLICATIONS DUE
THURS., MARCH 1 8 A.M.
HUB DESK
(APPLICATIONS WILL BE HANDLED ON FIRST COME, FIRST SERVED BASIS)

LUTHERAN STUDENT VESPERS
TODAY
WED. 6:30 - 6:55 P.M.
EISENHOWER CHAPEL

Women Song Dance
Women Song Women
Women! Women! Women!
at the
ATHERTON - TIM MIXER
TIME: 6:30 PLACE: ATHERTON LOUNGE
TONIGHT

CAMP ECHO
BURLINGHAM, NEW YORK
SUMMER CAMP for BOYS and GIRLS
Will Interview Men and Women for Counselor Positions
TUES., MAR. 6, WED., MAR. 7
Must be at least 19 years old
FOR FURTHER INFORMATION AND APPOINTMENTS, CONTACT OFFICE OF STUDENT AID, 218 WILLARD

It's a date...
with
GOOD FOOD

THE BURGER SHOP
My-O-My Bar
(across from Old Main)

Hoagies	45c
Introductory Offer ... Free Coke or Root Beer with every Hoagie	
Hot Beef with french fries	60c
Hot Meat Loaf with french fries	55c
Hot Dog with Sauerkraut or Coney Island Sauce	20c
Pizza with Meat Sauce or Pepperoni	85c and \$1.00
Steak - choice cut	\$1.29
with French Fries, Tomato and Lettuce Salad, Bread and Butter	
Homemade Chili	30c

● All above items found also at the My-O-My Bar downstairs