

Varsity Swimming Pool, Rec Hall Expansion Slated

If planning continues at its current pace, out-moded Rec Hall will have room for 3,000 more people in 1965 and Penn State will be well on its way toward forming a varsity swimming team.

Plans for a new western extension to Rec Hall which would extend the playing floor almost 90 feet and increase the seating capacity from 6,000 to 9,000 were examined last week by the General State Authority in Harrisburg.

Walter H. Wiegand, director of physical plant, said that it usually takes three years to complete construction after the initial steps have been taken.

GSA also has approved a rough draft for a Pool Building to be constructed on Curtin Road where the flower plots are presently located.

THE POOL BUILDING will house a varsity-size pool (75 feet) and a beginners pool and will have a seating capacity of between 1,500 and 2,000.

GSA has appropriated \$110,500 in architectural fees for the completion of plans for the building. Wiegand said that money for the construction of the pool may not be approved until two years from now when GSA meets again to handle such matters.

In addition to these two projects, plans have been completed for a southern wing on Rec Hall. They will be out for bidding sometime before summer.

THE SOUTHERN WING will have eight courts each for each for handball and squash and a gym floor the size of the current gym floor, minus the areas for wrestling and weight lifting.

There will be limited seating capacity for such events as fresh-

man basketball games and intramural championships.

Several multi-purpose rooms will be built in the southern wing. Wiegand said that these rooms could be used for some form of athletic competition or for classrooms.

Construction of the western extension probably will start within six to eight months. Wiegand said the cost of construction will be \$1.3 million.

TENTATIVE PLANS CALL for hydraulic lifts to be installed in part of the gym floor, so that when the lifts are raised the floor will become a stage. Wiegand said that the lighting and acoustics systems will also be improved. Thus Rec Hall will be better suited for Artist Series and similar type productions.

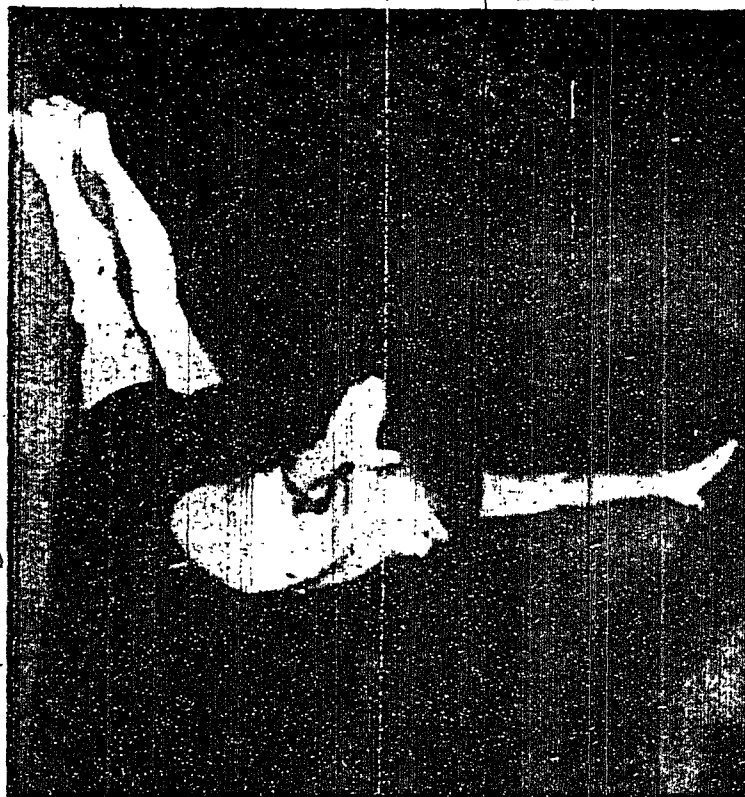
Part of the bleachers in the new wing will be of a fold-away design, permitting removal and storage of entire sections when not in use.

The balcony track Penn State's indoor track team uses for practice will be extended around the perimeter of the western wing.

WIEGAND SAID the varsity pool will have a diving well and boards at one end. The beginners pool will have a maximum depth of five feet.

The building also will include locker rooms, showers, and coaches and officials rooms.

"We're not certain just what the building will look like," Wiegand said, "but it may be designed in such a way that the end wall—probably to the south—will be open. In summertime we can have an outdoor beach effect with sand."—Jim Karl



PERFECT FORM: Mike Bullock of Alpha Chi Rho shows perfect form in executing a front dive in intra-mural swimming action last night in the Glennland Pool. Bullock won the diving event with a 23.7, but his team lost to Phi Epsilon Pi, 22-13.

Close Meets Mark IM Swim Action With 2 Contests Decided by 1 Point

By JOE GRATA

Three close decisions were recorded in fraternity intra-mural swimming action at Glennland Pool last night when Phi Epsilon Pi defeated Alpha Chi Rho, 22-13, Phi Mu Delta edged Beta Sigma Rho, 21-20, and Sigma Phi Epsilon eked out a 20-19 win over Lambda Chi Alpha.

John Agnew took first in the backstroke; Dave Raezer took first in diving with a 13.8 and the relay team won to pace Lambda Chi Alpha to its win over Sigma Phi Epsilon. The losers, previously beat Sigma Alpha Epsilon, 24-17, in their only other start.

CHUCK CHAMBERS took the freestyle in 34.9 seconds and the relay team copped first place to pace Phi Mu Delta over Beta Sigma Rho in the first start of the year for both squads.

Peter Roth won the diving

event with 19.7 points and the backstroke, while teammate Jim Kridel won the breaststroke competition, but it wasn't enough as Beta Sig fell one point short of victory.

Mike Bullock of Alpha Chi Rho scored a brilliant 23.7 in the diving event, but his team fell to Phi Epsilon Pi, 22-13.

Bullock had a 3.6 on the front dive, 9.6 on the back dive, and an 8.5 on the optional dive, which was a forward flying somersault with a difficulty of 1.7.

PIAA Playoffs Here

Mt. Nittany seems to have a perfect set-up for Pennsylvania Interscholastic Athletic Association (high school) playoffs. Each year cross-country, wrestling, tennis, golf, and track are staged at Penn State.

Shooters Trounce Duquesne 1412-1350

The Penn State rifle team rolled to its ninth victory of the season at Duquesne Saturday by the convincing score of 1412-1350.

The Lions (9-3) usually score higher than their 1412 score, but several of State's top shooters didn't make the trip to Pittsburgh. Both teams were hindered by the poor lighting conditions in the Duquesne rifle range.

Dave Kline and Dick Gogolkiewicz set the pace for Penn State with a score of 285. Other scorers for the Lions were Bill Dankes- riter, 281, Walter Estep, 281, and Tom Goff, 280.

The rifle team's next match will be Saturday when it entertains Carnegie Tech at the Rec Hall rifle range. After that Penn State will be idle until March 30-31 when they travel to Grove City, Pa. for the National Rifle Association sectional matches.

Ex-Grid Mentor Dies

BETHESDA, Md. (AP) — Soft-spoken Dick Harlow, gentleman, scholar and football coach, died yesterday at the age of 72.

He had been under treatment at Bethesda Naval Hospital since Jan. 4 for a circulatory ailment. His death apparently was caused by a heart attack.

A member of Football's Hall of Fame, Harlow coached at Penn State from 1915-1917, compiling a 20-8 record.

It's Time To Order MIL BALL CORDAGES

From **WOODRING'S Floral Gardens**
117 E. Beaver Ave.
(across from Post Office)
AD 8-0566

SPACE, MISSILE & JET PROJECTS AT DOUGLAS

have created outstanding career opportunities for SCIENTISTS and ENGINEERS

B.S. degrees or better

Assignments include the following areas:

- Servo-Mechanisms**—relating to all types of control problems
- Electronic Systems**—relating to all types of guidance, detection, control and communications
- Propulsion**—relating to fluid-mechanics, thermodynamics, dynamics, internal aerodynamics
- Environmental**—relating to air conditioning, pressurization and oxygen systems
- Human Factors**—analysis of environment affecting pilot and space crews, design of cockpit consoles, instrument panels and pilot equipment
- Heat Transfer**—relating to missile and space vehicle structures
- Structures**—relating to cyclic loads, temperature effects, and the investigation of new materials, methods, products, etc.
- Aerodynamics**—relating to wind tunnel, research, stability and control
- Solid State Physics**—relating to metal surfaces and fatigue
- Space vehicle and weapon system studies**—of all types, involving a vast range of scientific and engineering skills

Get full information at **INDIVIDUAL ON CAMPUS INTERVIEWS** with a Douglas representative

Monday, February 26 or Tuesday February 27

We urge you to make an appointment through George N. P. Leech, Director Placement Services. If you cannot please write to **S. A. Amestoy, Staff Assistant to VP Engineering**

DOUGLAS AIRCRAFT COMPANY, INC.
3000 Ocean Park Blvd., Santa Monica, California
An equal opportunity employer

COLLEGIAN CLASSIFIEDS

FOR SALE

BANJOS, UKES, Guitars, Pianos, Hammond Organs—strings, books, all music supplies. Pifer Music Center, Bonner Pike. Open 'til 9 p.m. daily except Weds. Phone EL 5-3441

TRADE-IN TELEVISION Sets, completely reconditioned. 1962 Zenith T.V. Electronic Service TELEVISION SERVICE CENTER at STATE COLLEGE, PA.

COMPLETE SCUBA Diving Outfit, used. In best condition. Cheap. Call John. UN 5-1661

1954 NASHUA TRAILER, 15'x8', 2 bedrooms, large living and patio. Three minutes from campus. \$1100. Call AD 8-0004.

'61 PLYMOUTH Caravelle coupe. Removable hardtop. 20,000 miles. Take over payments of \$1000 balance. Call MAJo 6-7111.

SPORTS CARS: We've custom. All makes and colors. Over 200 new and used. Mercedes, Alfa Romeo's, Jaguars, MGTC's, FIAT's, TR's, Healey's, and Sprite's; Volvos, VW's, Ghia's; 4-wheel drive Land Rover's. Complete financing and trade in all cars. B-C-U BUY-B-SUR-Z get B deal. Open 'til 9 p.m. Write or phone Sales Manager for list and prices on models and colors interested in. European Motors, Rossville, York County, Penna. Phone Dillsburg 1891.

HALLICRAFTERS SENSE, AM, SW, Headphones. Played less than 3 hours. \$18.00. UN 5-3332 after 7.

EVENING GOWN, size 8. Good condition, reasonable price. Call UN 5-4179.

'60 CHEVY, Good condition, inspected, 29 mpg. Will listen to any reasonable offer. Call Tom UN 5-4615

PORTABLE ELECTRIC Sewing Machine—new, ordered by mistake \$37. Sewn forwards and backwards. New machine guarantee. AD 8-4337.

RECORDS—lowest prices in town. Stereo's \$3.98; Hi-Fi's \$2.98. All popular labels. Twist \$2.44. At Sears Roebuck and Company, 230 W. College Ave.

FOR RENT

AVAILABLE IMMEDIATELY: Unfurnished one bedroom apartment; heat, water, stove and refrigerator furnished. For further information call AD 8-0686.

FIRST FLOOR furnished efficiency apartment in Panorama Village, for 2 students or married couple. \$60 including utilities. AD 7-7172.

LOST

PAIR OF glasses in light blue case, left in 314 Willard. Call Connie UN 5-7109.

REWARD FOR the return of my history 20 notes. Lost between Willard & East Halla Friday. Call Jan UN 5-8816.

WRIST WATCH, white gold, Ladies. Hamilton. Vintory Bouquet-Groenink. Reward. Jan UN 5-3913.

LOST my funny little square glasses Friday. Finder call Barb UN 5-4922.

WANTED

TO RENT beginning spring term apartment for three boys near campus. Call Ron AD 7-7334 after 7:30.

GIRL TO SHARE apartment for spring term. Call Helen AD 7-1043.

HELP: RIDE desperately needed for two Lehighville, Penna. or vicinity. Any time Friday. UN 5-8162.

WANTED: TWO waiters. Call AD 7-4992, ask for the exterior.

ENERGETIC SALESMAN, part time basis; 20 hours a week selling major appliances. \$50 a week draw versus commission. Contact C. J. Brydon, Sears, Roebuck and Company.

HELP WANTED

HELP WANTED—kitchen help. Call AD 8-4719 ask for exterior.

WORK WANTED

WILL DO IRONING. HO 6-4494.

MISCELLANEOUS

PART TIME Employment, College students, male or female. Afternoon and evening work, 17 hours per week. Working schedule will be arranged to suit class and study schedule whenever possible. Call Mr. Kauf- for 8 a.m. - 2 p.m. AD 8-7081. Salary—\$50 per week.

STUDENT CHECK CASHING AGENCY open Monday thru Friday 9:30 - 9:00; Saturday 9:30-2:30.

GRADUATE STUDENTS, Upperclassmen - Comfortable rooms with hot and cold running water or private bath. Inner-spring mattresses. CENTRAL Parkers. Accommodated to inspect and compare. The Colonial, 123 West Nittany. AD 7-7792 or AD 7-4950.

COMMUNION BREAKFAST Feb. 25 at 10:30 a.m., HUB Terrace, Ballroom. A & B. Speaker: Father Joseph Lohdy. Tickets 20¢ Chapel. Sponsored by Newman Club.

OFFSET PRINTING of thesis-typing. Call AD 7-1055.

FOR STANDARD and electric typewriter rentals. Complete typewriter repair service and all thesis typing supplies shipped Nittany Office Equipment, 231 B. Allen Street AD 4-6125.

THESES PRINTING, reasonable rates. Phone AD 8-9774 or EL 6-2542 after 6.

100 CAMPS, resorts, & national parks have listed over 1,000 summer job openings for men & women. Information on qualifications, locations, dates of season, & salaries from Office of Student Aid, 219 Willard.

DEAR ABBY—What can I wear to HELLS ANG RINGING? Feb. 27, 28, 29 is Schwab's. Undecided.

LA GALLERIA'S Tuesday Special: Hot Beef Mashed Potatoes and String Beans, Sauced and Bread—75c.

SWITZERLAND, France, Italy—YOU see this ad! Don't miss this summer. For details call UN 5-6518.