

Spring Week Committee Selects 'Wide Wide World' as Theme

"Wide Wide World" has been selected as the theme for Spring Week, Robert Polishook, chairman, announced last night. The theme includes all countries in the world and carnival skits may be based on any aspect of the country such as customs, history or traditions. Skits may date back as far as 950 A.D., Polishook said.

COUNTRIES will be assigned to competing groups from a preferential list of several countries turned in by the groups, he said.

Three country-categories will be determined after each group has been assigned a country. A complete list of the countries will be alphabetized and divided by three to determine the categories. Polishook said that applica-

Debaters—

(Continued from page one) in engineering science from Pittsburgh, debated the affirmative for Penn State.

Stout and Goodhart argued on these three major points:

- that there is a real danger of nuclear atomic attack and that this country wants to be prepared.
- that the only way to be prepared is to have a fallout shelter program, and that that program should preferably be a community plan.
- that the government should initiate a program to utilize already existing facilities and buildings which would provide sufficient protection from fallout.

3 Rejected—

(Continued from page one) on his floating scholarship motion, he would not put his objections in the form of a motion.

The Congress also defeated a Witmer motion to further discuss all of the budget but the last part dealing with scholarships which he wanted to postpone until the next meeting.

The Congress decided to hold a special meeting Tuesday to discuss the by-laws by which the Congress will operate.

New College Diner

5 FINGER EXERCISE

TONIGHT 8 p.m.

CENTER STAGE

Lawrence Stresses—

(Continued from page one) up a master plan to further higher education in the state.

"COMMUNITY COLLEGES would be located mainly in cities and would, in a sense, bring college to those who want it. They would probably be limited to a 2-year program and be designed to prepare students for transfer to a 4-year institution to complete their education.

"They would provide both general and technical education and would have an extensive program of continuing education for adults," he said.

"A MASTER PLAN such as we are considering would study and eventually indicate how state aid

would be apportioned to various schools, to direct research on the broader aspects of education such as the social sciences and humanities and eventually to a more extensive scholarship program than now exists," he said.

"I think eventually the state will be divided into three main regions of development: the southeast, with Temple and the University of Pennsylvania serving as the stronghold; central Pennsylvania, with Penn State, and the western part of the state with the University of Pittsburgh," Boehm said.

Snow Today—

(Continued from page one) strength in central Canada, and that cold air should follow the storm into Pennsylvania tomorrow causing somewhat colder weather for the weekend.

Today should be cloudy and cold with snow beginning during the afternoon. The high temperature should be about 30 degrees.

Snow, increasing winds and cold weather are indicated for tonight, and a low of 20 is likely.

A few snow flurries, breezy and colder temperatures are predicted for tomorrow. A high of 27 is likely.

Newman Club Presents

Monsignor Leonard J. Vick


SUN., FEB. 11 7:00 P.M.

Topic: The Index—Good or Bad?

Open To Public 111 Boucke

Today... a new diamond star is born!

THE OVAL SHAPE

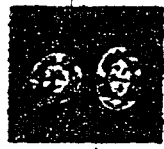


A GLORIOUS PHENOMENON!

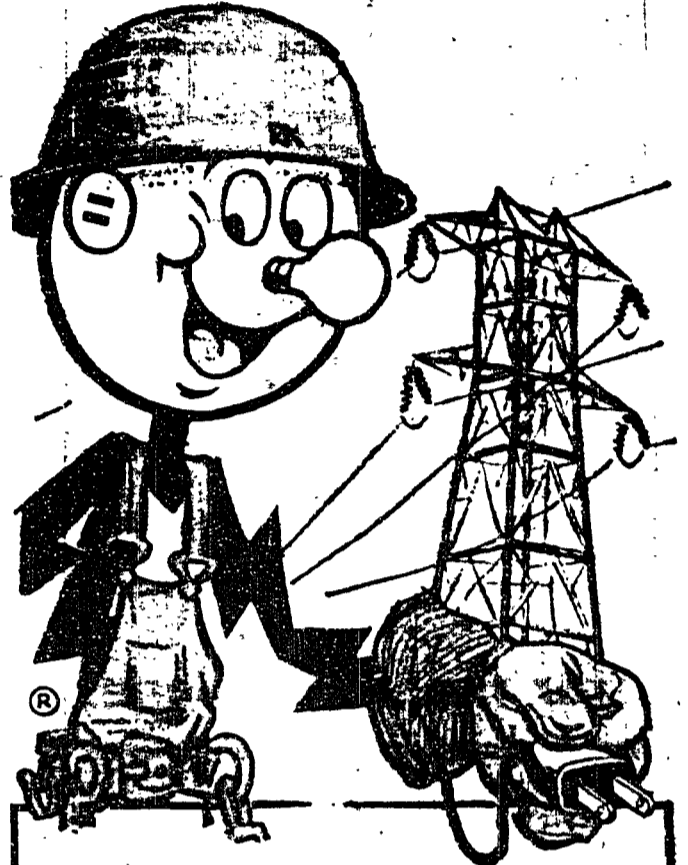
Never before has any diamond shape so strikingly enlarged a diamond's appearance and revealed such fiery radiance, such shimmering beauty.

THESE TWO DIAMONDS ARE IDENTICAL IN CARAT WEIGHT!

You are cordially invited to see our selection of these dramatic new OVAL diamond rings.



CRAB TREES

Americans are in command of more electric power than Russia, Great Britain, Western Germany, Canada and Japan combined! And our capacity is expected to double by 1970. There'll always be plenty of power for home, farm, industrial and commercial needs.

ELECTRICITY POWERS PROGRESS

Right here in our own area abundant electric power at low cost means more jobs, more money in circulation, a higher standard of living for all of us. And thanks to the look-ahead planning of investor-owned independent power companies like this one, electricity will serve you even better in years ahead.

ELECTRICITY POWERS PROGRESS

NATIONAL ELECTRICAL WEEK

FEB. 11-17, 1962

WEST PENN POWER

HERE

Alpha Pi Kappa Lambda Phi

CHARITY CAN CAN JAMMY

Music by THE HI-FIVE at Pi Lambda Phi

Admission: 1 can of food per person To be donated to the RED CROSS

Couples only Saturday 8 - 1 Dress Informal

CANNED FOODS