

SGA Group Plans Flight To Europe

By SANDY YAGGI

(This is a third in a series of articles concerning the work of the Student Government Association committees.)

In several weeks the Student Government Association Flight Committee will begin its work of publicizing its annually chartered flight to Europe.

This committee, formed three years ago, to investigate the possibility of chartering a student flight to Europe, has been working in close cooperation with Mrs. Macklin John of the Penn State Travel Agency in planning an inexpensive means of transportation for students.

The SGA chartered flight takes students round trip from New York to London and from Paris to New York, provides hot meals and allows for 44 pounds of baggage.

The SGA Flight Committee attempts not only to provide inexpensive transportation for students desiring to go to Europe, but also makes available information from the Penn State Travel Agency for tours in Europe.

In the past, a total of 75 students has been required to charter the plane, said Allison Woodall, chairman of the committee. Rates were adjusted in accordance to the number of students interested in participating, she said. The biggest drive for applications is usually in March, and the future may see more than one plane chartered, Miss Woodall said, as the number of students wishing to make use of the service increases.

When the committee began its work three years ago, members held office hours in the SGA office to answer questions about the flight. This led to confusion and the practice has currently been discontinued, Miss Woodall said.

Now the committee's main function is to distribute material and publicity for the flight and to refer all questions of specific details to Mrs. John at the travel agency, she said.

This committee not only makes the flight available to students on the University Park campus, Miss Woodall said, but also provides publicity material for all the commonwealth campuses so that their students may also participate.

Exams Scheduled

The following evening examination schedule has been approved by the deans of the nine colleges. Hours and rooms for evening examinations will be announced by the individual course instructors.

Course	Dates
ARMY 1	Oct. 31, Nov. 27, Dec. 4
ARMY 2	Dec. 5
CHEM 11	Nov. 2
CHEM 12	Oct. 18, Nov. 15
CHEM 451	Oct. 25, Nov. 24, Dec. 6
FR 1	Oct. 25
FR 2	Oct. 30
FR 3	Oct. 27
E MCH 11	Dec. 6
E MCH 12	Dec. 4
E MCH 13	Dec. 5
E MCH 213	Dec. 4
EE 8	Oct. 18, Nov. 9, Nov. 27
GER 1	Oct. 25
GER 2	Oct. 30

GER 3	Oct. 23
MATH 41	Nov. 1, Nov. 21
MUSIC 5	Oct. 26, Nov. 30
PHYS 201	Oct. 16, Nov. 13, Dec. 7
PHYS 202	Oct. 17, Nov. 16, Dec. 5
PHYS 215	Oct. 17, Nov. 7, Dec. 7
SPAN 1	Oct. 17, Nov. 7, Dec. 6
SPAN 2	Oct. 18, Nov. 9, Dec. 6
SPAN 3	Oct. 30, Dec. 4
SPAN 4	Oct. 23, Dec. 6

Visiting Canadian Prof

Dr. Ernest A. Eichelbrenner, visiting professor of fluid mechanics at Cite Universitaire in Quebec, Canada, will address the Fluid Mechanics Seminar to be held at 4 p.m. Friday in 232 Hammond.

His subject will be: "Separation and Reattachment of Turbulent Three-Dimensional Boundary Layers."

Unclaimed Textbooks

The UBA has announced that all books not collected by 11 a.m. Saturday, October 14, will be automatically forfeited to the UBA. Incorrect books may not be exchanged after this date.

DEAN'S

15c Burgers

House Dedicated

At the dedication of Bradford House in East Halls State Sen. Albert E. Madigan said yesterday, that the commonwealth is not supporting the University to the degree that he wishes but that he felt certain this situation would be rectified.

Madigan also praised the University for its many services to the citizens of Bradford County. He cited the presence of 94 students from Bradford County at the University as an example.

Bradford House, which was named for Bradford County, is a living unit for 38 men. It is the second such unit of 14 in this area.

SUMMER JOBS IN EUROPE

Write To: American Student Information Service, 22, Ave. De La Liberte, Luxembourg

Let Collegian Classifieds WORK FOR YOU

LUTHERAN VESPERS

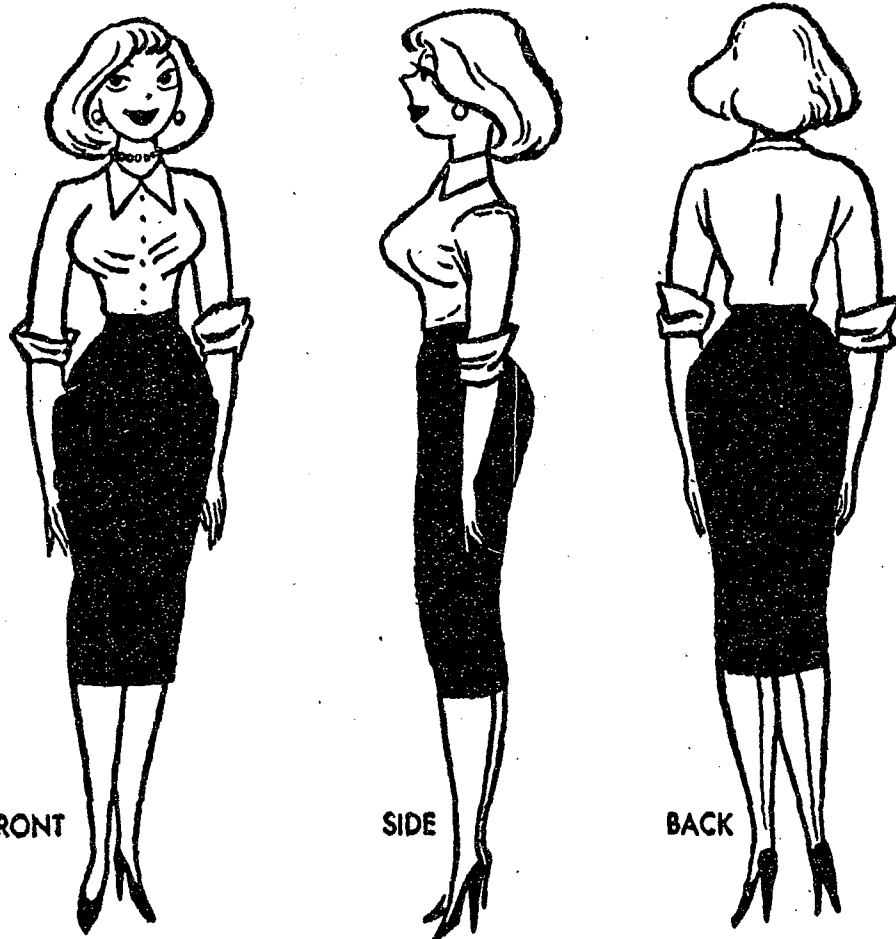
Eisenhower Chapel

TONIGHT ... 6:30 - 7 P.M.

All Welcome

Girl Watcher's Guide

Presented by Pall Mall Famous Cigarettes



FRONT

SIDE

BACK

Three views of an average, healthy girl

LESSON 1 - How to recognize a girl

It is not surprising, in these days of constantly changing fashion standards, that girls are often mistaken for men.

Certain popular items of apparel, such as slacks, baggy sweaters and boxy suits, contribute to this unfortunate situation. Therefore, we suggest that new students of girl watching start with the fundamentals (see above diagram). As you can see, girls are easiest

to identify from the side. However, even the beginner will soon achieve proficiency from front and rear as well.

Advanced students can usually tell a girl from a man at five hundred paces, even when both are wearing asbestos firefighting suits. (You might try offering the subject a Pall Mall, but you won't prove anything. It's an extremely popular brand with both sexes.)

WHY BE AN AMATEUR? JOIN THE AMERICAN SOCIETY OF GIRL WATCHERS NOW!

FREE MEMBERSHIP CARD. Visit the editorial office of this publication for a free membership card in the world's only society devoted to discreet, but relentless, girl watching. Constitution of the society on reverse side of card.

This ad based on the book, "The Girl Watcher's Guide." Text: Copyright by Donald J. Sauer. Drawings: Copyright by Eldon Dedini. Reprinted by permission of Harper & Brothers.



Pall Mall's
natural mildness
is so good
to your taste!

So smooth, so satisfying,
so downright smokeable!

DEAN'S

15c Burgers

SATISFACTION IS YOURS IF YOU ORDER

P
I
Z
Z
A

from
FRANK'S HOAGIE HAVEN

Free Delivery AD 8-8381
112 S. Frazier