

Frosh Must Learn Campus Traditions

Freshmen would be wise to become acquainted with University landmarks and traditions as soon as possible, for upperclassmen will soon be querying for important names, dates and places.

Old Main, which stands in the center of the campus, is probably the most imposing structure. It houses the University administration, a Little Theater and murals illustrating the University's history and activities.

In Old Main's tower are chimes, which toll every 15 minutes during the day and every hour during the night.

The Mall, which stretches from College Ave. to the Pattee Library, is the site of the Obelisk and the willow tree, which was grown from a branch taken from the vulnerable "Old Willow" that was destroyed by a storm in 1922.

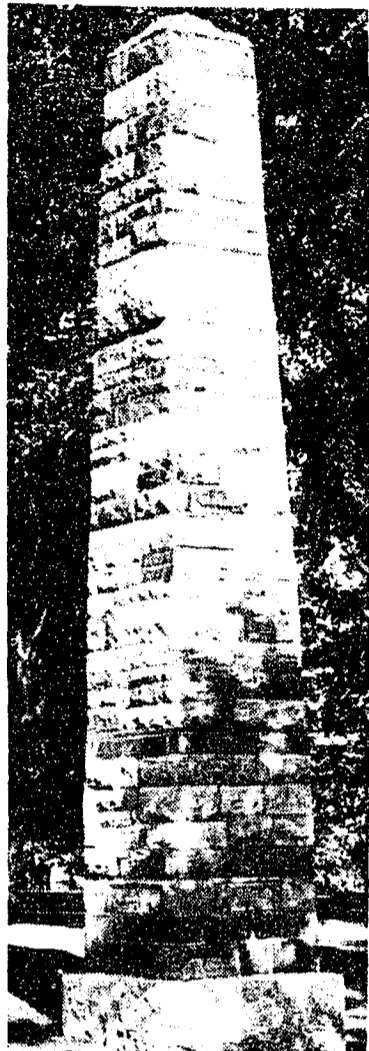
The Obelisk is constructed from 281 samples of Pennsylvania stones arranged in geologic order according to stratification and age.

But there is another story the Obelisk — a legend you might say. Ask any upperclassman.

On the other side of Old Main is the Little Mall, which contains the Quarry Memorial, a boulder taken from the quarry which provided stones for the original Old Main.

The famed Nittany Lion Shrine, symbol of the University's athletic teams, was a gift of the class of 1940 and was carved from limestone by sculptor Heinz Warneke in 1942. It is located next to Recreation Hall.

The only grave on campus is marked by a flat stone plaque beside Schwab on Pollock Road. It is that of George Washington Atherton, president of the University from 1882 to 1906.



THE OBELISK: A monument containing building stones from every county in the State.

SGA Will Undergo Facelifting

SGA—the Student Government Association of Penn State—is currently emerging from what can only be described as a state of limbo.

How it got there and the new form in which it is emerging affects every student at the University, for SGA is the voice and lawmaker for the student body.

The first form of student government, which began just before World War II, was called the Cabinet system. In this system there was no elected legislative branch, although there were All-University officers.

The Cabinet, which was called the legislative branch, was comprised of the presidents of all college councils and the larger organizations on campus. In other words, the legislators got there by virtue of other positions.

In 1959 this system was abandoned because the government was not directly elected and was

also subject to control by cliques and "interest" groups.

The new government, known as the Student Government Association, was a miniature of our national system. Its legislature was directly elected by the four classes. It had a Cabinet which was composed of student advisors to the President, and included a system of local courts headed by the SGA Supreme Court.

This system was chartered by the University Senate. Its charter was made provisional for two years at the of which its constitution would be reviewed by the Senate for final passage or rewriting.

The two years were up last spring—and with the deadline SGA realized that student government needed reworking.

The legislative branch (SGA's Assembly) began to meet every week night in a grueling self-analysis concerning the need for and purpose of student government and its particular problems at Penn State.

A new system of representation was devised whereby representatives would come from each of the four residence areas of the University community (Association of Women Students, Men's Residence Council, Interfraternity Council and Town Independent Men). These would be in numbers proportional to the size of the residence area.

Cabinet would again be composed of the college council presidents, though they would be only an advisory body to the executive. The judiciary would be maintained as previously.

This constitution now must be presented this fall to the Senate for affirmation. When such is forthcoming, election of a new legislature will be scheduled.

Weidhass Publishes Book

Ernest R. Weidhass, associate professor of engineering graphics is the author of the book, "Creative Problems in Engineering Graphics," recently published by McGraw-Hill Book Co.

Welcome Freshmen:

See Our Back-to-School SHOES from a Variety of many Styles KEDS

Men's Florsheim Shoes
Women's Jacqueline & Connie

BOTTORF BROS. SHOE STORE

140 S. ALLEN STREET

The Candy Cane
Welcomes
New Students
Stop in here for hand-made candy, fresh salted nuts, and University Creamery ice cream bars and sandwiches.
The Candy Cane
between the movies on West College Avenue.

Through the Looking Glass
with Gabbi

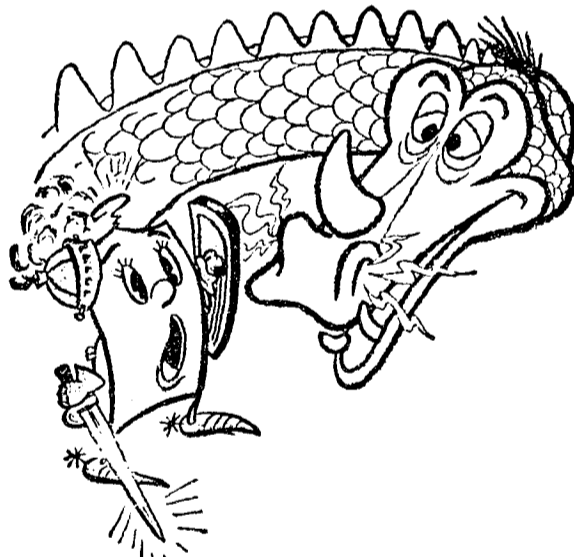
You say you're sophisticated but not rich? You say the thing you're hunting for is a good store — one that's exclusive but not expensive? Well, the old philosopher says (oops... that's plagiarism — what we mean is "we say") that **Ethel Meserve's** is the store where you can bag your game. Ethel says not to let the quality look of the store frighten you into thinking that you'll need quantities of money to buy the fine items she sells.

Do you think your parents (or maybe friends) are expecting to hear from you this year? (Via U.S. Mail, I mean) Ethel has beautiful stationery engraved with the Penn State seal which will provide the where-withall. The paper comes in pink and blue — or for those of you who prefer more neutral shades — in beige and white too. If you're like more than a few college students who are really pressed for time, Ethel has the notepaper size of the same stationery series. The price? shame on you for asking! \$1.00 for the stationery and \$1.50 for the notepaper.

"Cards are written with much greater ease than letters" to quote somebody-or-other. If you believe in this "age-old" saying, as many college students do, Ethel again can show you the game you're hunting for. Her line of greeting cards (yes, contemporary cards) can fill the writing gap at "no-occasion" times when you just haven't time to write and can add the extra to special occasions when a card and letter mean a lot (the letter on stationery from Ethel's, of course).

Well, "bye for now" from Gabbi, but Ethel's waiting to say "Hi" to all of you and welcome you to Penn State and to Ethel Meserve's.

Ethel Meserve
112 E. College Ave.



FRESHMEN HAVE NO FEAR — BALFURD IS HERE

During Orientation Week—when all things look strange and your mind is filled with doubts—have no fear, you'll like it here. Speaking for Balfurds, we welcome you as we've been welcoming others for over a quarter of a century. We're extending a sincere invitation to come in and get acquainted with our clothes care services. Just like mothers care for everything you wear.

TWO STORES TO SERVE YOU
307 West Beaver Avenue
111 South Garner Street
across from the
Campus Shopping Center



FREE! COLLEGE APPOINTMENT CALENDAR FREE!