



**STUDENTS AND ADMINISTRATORS** discuss on-campus problems in one of the six workshops of the 1961-62 Student Encampment which ended yesterday. About 125 students, faculty members and administrators attended the annual three-day Student Government Association conference. Workshops made recommendations on all aspects of student interests and made plans for the coming year in student government.

## Panhel Plans for Winter Rush

Establishing themselves as coeds is the first important step for the female portion of the class of '65. The next step concerns sororities.

Every Penn State coed has to decide whether or not she would like to join a sorority and, if so, which one. But first, of course, she has to find out something about Greek life.

The Panhellenic Council, which coordinates sorority activities, is all set to answer questions, give details and greet potential sisters.

At 1:30 p.m., Sept. 24, Panhel will hold an informal program in the Hetzel Union lounge. Slides of sorority projects will be shown and representatives from the 26 sororities and two colonies will be there to talk to the new coeds. Fireside chats will be held Oct. 1 and 8.

Rush registration will be held Oct. 23 and 24 and all freshmen will be eligible to register. In previous years, rushing did not begin until the second semester and only girls with a 2.3 All-University average were permitted to register.

Each rushee will visit all the sorority suites during the open

houses Nov. 4 and 5 and will spend 10 minutes in each one with a 10-minute break between visits.

Concentrated rushing will begin during the first week of the winter term.

To begin this part of the rushing program, prospective rushees will have to have attained a certain academic average. The average requirement will be decided this term.

Sisters and rushees will get together for chatter dates and bermuda parties and then the narrowing down process will start.

Rushees will pick up their first round of chatter date invitations Jan. 5 and will be able to accept 10.

For the second round of chatter dates, the rushees will pick up their invitations Jan. 7 and will be permitted to accept six.

Bermuda parties are scheduled for Jan. 10 and rushees will be able to attend three.

The climax to rushing will be the formal coffee hours on Jan. 11 and rushees may go to two.

After coffee hours, rushees will sign preferential cards, thus making their final decision as to which sorority they would like

most to join. They may list another as a second choice.

Meanwhile, the sororities, too, will be choosing and will compile a list of the rushees they prefer.

Mechanically, the preferential cards and the sororities' lists will be matched to determine which girls go where.

On Jan. 12, bids will be sent out and that night the sororities will ribbon their new pledges.

Definite procedures and regulations for rushing have not yet been decided. They will be announced early in the term so that when sororities become the favorite dorm conversation, new coeds will really be "in the know."

## Encampment Concluded--

(Continued from page one) areas of responsibility for the Student Government Association.

The perennial problem of compulsory ROTC was tentatively resolved in a recommendation to make ROTC compulsory for only one year with another three years to be voluntary.

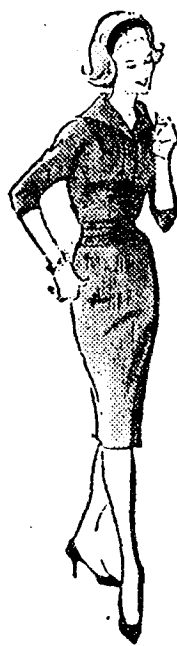
The compromise on the much debated policy forbidding women to visit men's apartments called for a waiver of this restriction for students over 21.

Changing gears from the semester system into the four-term plan has brought academic, social, organizational and activity problems which were discussed in the parties, and also defined new Four-Term Adjustments Workshop.

The perennials of compulsory ROTC was tentatively resolved in a recommendation to make ROTC compulsory for only one year with another three years to be voluntary.

The compromise on the much debated policy forbidding women to visit men's apartments called for a waiver of this restriction for students over 21.

Changing gears from the semester system into the four-term plan has brought academic, social, organizational and activity problems which were discussed in the parties, and also defined new Four-Term Adjustments Workshop.



Welcome,  
Freshmen

to PENN STATE

and to the new  
collegiate fashions  
waiting for you  
at . . .

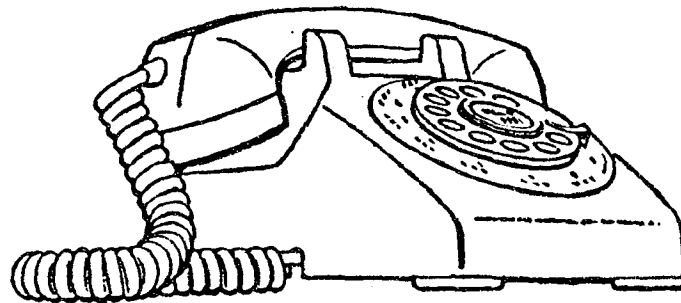
Clearfield's

Feminine Fashions

124 E. College Avenue - Across from Old Main

Off-campus students:

Enjoy telephone service in your room!



One of the comforts of home is the handy telephone. Telephone service can also be yours while you are a student at the university. With a telephone of your own you can . . .

- Quickly contact your friends to make plans for extra-curricular activities
- Easily handle matters concerning your studies—e.g., determine the whereabouts of a hard-to-get-hold-of book
- Keep in touch with folks back home—and they in turn will find it so convenient to reach you direct

So whether you're living in a private home or apartment, you'll find that your personal telephone service will pay off in many ways.

And it's so easy to order. To make arrangements, just call ADAMS 7-4911 or stop in at our Business Office, 116 E. College Ave.

THE BELL TELEPHONE COMPANY OF PENNSYLVANIA

Your neighbors enlarging your world through service and science

Monday

Is a Great Day For  
Those Who Think

YOUNG

We Reopen Tomorrow . . . If You  
Wear a Junior Size . . . Stop In  
And Be Amazed!

MR. CHARLES, III

404 E. COLLEGE AVE., STATE COLLEGE

Free Parking in Rear