

# Religious Groups' Activities Planned

Campus religious organizations and the staff of the Helen Eakin Eisenhower Chapel will hold an open house from 10 a.m. to 5 p.m. today in the Chapel for new students and their parents.

Exhibits will be displayed in the lounge to describe the main activities of the Chapel and Meditation Choirs, University Christian Association, Hillel Foundation, Newman Club and other religious groups which work with students.

Tonight at 7, meetings, mixers or visits to faculty homes will be sponsored by 13 religious groups for the new students.

Meeting places and activities planned but not listed in the Orientation Booklet are: Christian Student Fellowship (Christian Church), 7:15 p.m. in front of Mineral Industries, reception;

Episcopal Student Group, 208 W. Foster Ave., Parish House, reception and visits to faculty homes; Evangelical United Brethren Church, 306 W. Beaver Ave., reception; Free Methodist Church, 121 S. Sparks St., evening service of worship and reception; University Christian Association, Eisenhower Chapel Lounge, reception and mixer for students of other churches (Brethren, Mennonite, Eastern Orthodox, etc.) and for those with no denominational preference.

Religious affairs at the University are centered at the Eisenhower Chapel where the offices of the Chaplain and the Co-ordinator of Religious Affairs are located.

Under the direction of Dr. Luther Harshbarger, University Chaplain, non-denominational services of worship are held each Sunday at 10:55 a.m. in Schwab.

At 9 a.m. every Sunday, Catholic Mass is held in Schwab and Protestant services are held in the Eisenhower Chapel.

Music for the 10:55 a.m. service is supplied by the University Chapel Choir under the direction of Willa Taylor. The Meditation Chapel Choirs directed by James Beach sing at the 9 a.m. Chapel service.

# Campus Politics Explained

If you packed some of your odds and ends in a soap box for your first year at State—save it!

Within a month Student Government elections will be here rivaling the national contests for flag waving, speech making and fist shaking.

Soon the three parties—Campus, University and Liberal will meet to nominate their candidates for the offices.

Card-carrying members of a party may vote to nominate that party's candidates. However, any student can join the political group of his choice when membership calls go out.

When more than one person is running for the same nomination, the meeting turns into a

sign-waving, song-singing event similar to national political conventions.

Campaigning officially begins after the three parties have each nominated candidates and drawn up platforms.

To spice the campaign, eye-catching signs are posted in the residence halls; students walk around campus with full-length placards over their heads and shoulders; cars with giant microphones drive through the residence areas; and the candidates themselves approach students with their campaign platforms.

Any undergraduate student may vote in the All-University elections, regardless of whether or not he is a member of a political party.

The method of running the parties internally is also similar to that of national politics.

Each group is headed by a chairman elected by party membership. Dennis Eisman chairs Campus party and Michael Dzvoniak and Dale Harris head University and Liberal parties, respectively.

The chairman acts as a gen-

eral campaign manager and tries to see that his party wins control of as many of the student offices as possible.

He also heads the party clique, the body which determines party policy. When this clique meets, it is called a caucus.

At present, Campus party controls all the SGA offices and the senior class presidency. Assemblymen and the other three class presidents will be elected this fall after the new SGA constitution is passed.

## Town Participates--

(Continued from page seventeen)

Derick, Timex wrist watch. Schlow's Quality Shop, blazer; Sears, drafting board kit; Woolworth's, clock radio; McLanahan's transistor radio; McLanahan's Self Service, transistor radio; Contemporary Trends, earrings and bracelet.

Keeler's, gift certificate (\$25 male and coed); Levine Bros., men's jacket; Wolf Furniture, table model radio; Blair Shop, gift certificate; Daily Collegian, three subscriptions.

# Pattee Library Plans Program For Orientation

The Pattee Library will conduct its annual Orientation Week program to help freshmen get acquainted with the library and learn to use its facilities properly, Ralph W. McComb, librarian said.

The program will consist of showing slides of the library with commentary and distributing the library handbook.

Pressed for storage and studying space, the library plans to expand in the future, McComb said. It is possible that in expansion, provision might be made for more stacks to be open to the students, he said.

McComb said that in expanding the book collection he would maintain the areas considered strong and as money becomes available, strengthen the weaker areas.

McComb said that the science area has a comprehensive selection of books and magazines while the humanities needs more.

History, literature and art are weak areas, but improvements have been made in the political science and philosophy fields, he said.

The over-crowded Agriculture Library, located in the basement of Patterson, also will be expanded in the future, McComb said. Part of this collection might be moved to the basement of Leete Hall where a reading and study center would be established, he said.

## First Editions Collection Given to Pattee Library

A collection of first editions assembled by the late Abby A. Sutherland has been added to the Rare Book Room collection in the Pattee Library.

The books had been located at the Ogontz Campus.

First editions of Robert Frost, Sherwood Anderson, Sinclair Lewis, Willa Cather and Edgar Lee Masters are among approximately 125 books in the collection.

**Spudnuts are NOT Doughnuts**

Try them and

**Taste the Difference**

**Meet Mr. Spudnut**

... the freshest thing in town

111 S. Pugh St.

AD 8-6184

**Welcome Freshmen**

We hope that you'll visit us soon, and that you'll come to know the Autoport as a good place to eat and stay.

**AUTOPORT**

RESTAURANT and MOTEL

S. Atherton St., Rt. 322

AD 8-2333

QUICK SERVICE

**DEAN'S Walk-In**

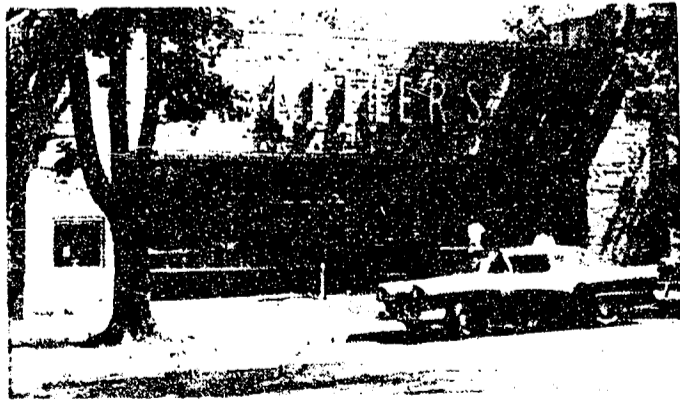
135 East Beaver Ave.

Juicy Hamburgers **15¢**

Thick Milk Shake **20¢**

Crisp French Fries **10¢**

This Is KEELER'S



You Are Cordially Invited to Attend Our

**OPEN HOUSE**

TODAY, September 17, 1961 2 p.m. to 5 p.m.

To enable us to meet you, and for the new students & parents to familiarize themselves with our services we invite you all to come in, browse around, and get acquainted.

Refreshments to be Served by Our Staff

Sorry No Sunday Sales... We Just Like to Greet You!

**KEELER'S** ... The University Book Store, Inc.

OPPOSITE EAST CAMPUS GATE

206 EAST COLLEGE AVE.

CALL AD 7-2112