

summer sportsman



# Fox Hunting Technique

By Don Macalady

August provides some of the best opportunities in this area for fox hunting. The area surrounding the University abounds in fox, and hunting them is simply a matter of mastering hunting technique and heading for the mountains.

Some particularly good areas are on Nittany Mountain between Centre Hall and Rebersburg and on Tussy Mountain east of Pine Grove Mills.

**THE USE OF PREDATOR "CALLS"** in Pennsylvania seems to have caught on as the most widely-used and recommended method for fox hunting. Any of the commercial mouth-blown or squeeze-bulb type calls are satisfactory. Almost without exception these calls imitate the sound of a squealing rabbit.

After a likely location is found, it is important to remain motionless, though it is not necessary to be hidden.

The use of the call itself is a fairly routine matter. The instructions enclosed with most calls are satisfactory for mastering the operation of it.

Once the call is made, it is most important for the hunter to be vigilant. Most calls will be responded to within 15 to 20 minutes. Foxes have a way of seemingly being invisible, so it is extremely important that the hunter be sharp-eyed. A pair of low power binoculars might be helpful.

**THE BEST PERIOD OF THE DAY** is the three hours immediately before dark. Early morning is not a good time. Calling success, it might be added, is highest when the wind is calm.

Using this technique and a low power rifle (perhaps a .22 Remington or a .22 Hornet) a hunter can have a good deal of off-season shooting pleasure.

During the spring and summer of this year the Game Commission released a record number of 11,386 mallard ducks on suitable waterfowl habitat in Pennsylvania. This total was by far the highest to date in Pennsylvania, and should provide improved duck hunting throughout the state this fall.

**I TOOK A VERY ENJOYABLE RIDE** on Sunday afternoon. It convinced me of one thing—Pennsylvania is a beautiful State. And, indeed, the area within ten or twenty miles of the University contains some of the most scenic spots in the state.

Between Centre Hall and Livonia are some fine examples of beautiful mountain scenery. North along route 322 you can also find beautiful mountain scenery. Indeed, anywhere you turn around State College you can find gorgeous scenery.

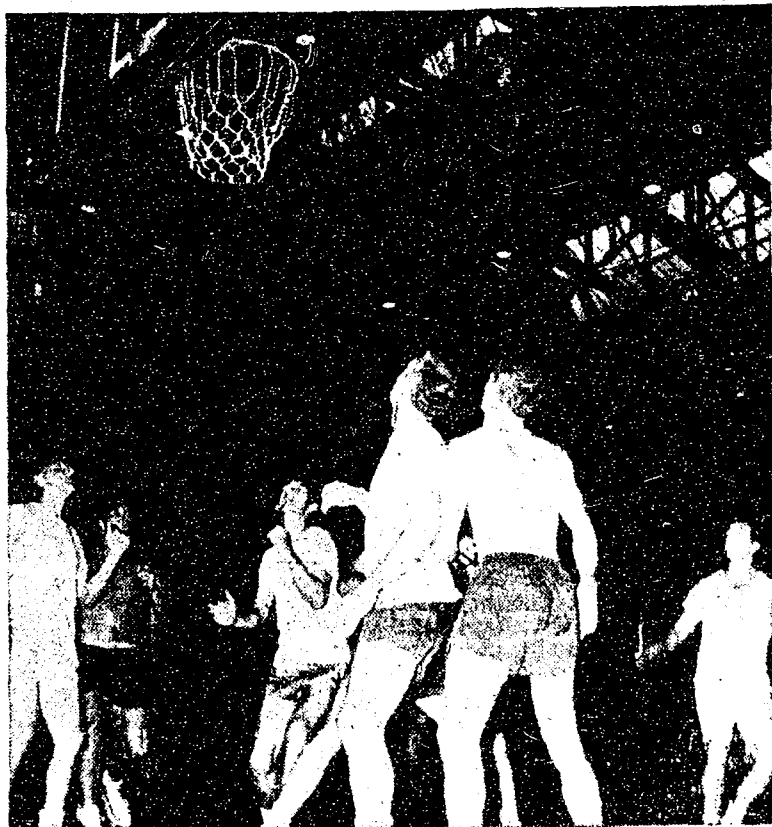
So the next time you feel a yen for some enjoyment and your budget is limited, take a short automobile ride and tour Central Pennsylvania—one of the nation's most scenic areas.

**NOW THAT THE SUMMER IS BEGINNING** to fade slowly away, the thoughts of many outdoorsmen turn to hunting. From all early indications, the prospects in this area for a highly successful small game season are very good.

As an example, I've seen as many as 25 ringneck pheasants in a flock as many as four times in the immediate area. Rabbits are all over the place, and I've never seen so many doves as this year.



Macalady



**TEAMS BATTLE** for first place in League A. The Red Lions defeated the Travelers 75 to 53 Monday night and will now play the winners of last night's game between the An-e-mals and the Celts for the Summer League Basketball trophy.

Collegian Photo by Charles Suhya

## Meteorology Head Gets \$9,330 Grant

Dr. Hans Neuberger, professor and head of the Department of Meteorology, has been awarded a \$9,330 grant from the National Science Foundation.

The money is to be used for the development of lecture demonstration, laboratory experiments and observational equipment for teaching elementary meteorology in both high schools and colleges all over the country.

The information compiled will contain many physical and dynamic principles which can be easily demonstrated.

A manual containing 40 to 50 elementary experiments in meteorology, and inexpensive equipment is now being developed by the department under the direction of George W. Nicholas, graduate student in meteorology.

## National Library Given University's Prize Film

The University's prize-winning color movie, "The Land-Grant Murals," has been added to the lending library of the National Educational Radio and Television Center.

James H. Coogan, director of public information, said inclusion in the library will make the 15-minute film available to the nation's 52 educational television stations for broadcasting.

## Football Traffic To Be Rerouted From Curtin Road

Curtin Rd. from Shortlidge to the stadium will be closed on home football weekends "to provide a route for pedestrians to travel without being molested by vehicular traffic," William C. Pelton, director of security, said yesterday.

Traffic will be rerouted along more direct roads to the stadium to aid in getting traffic to and from the stadium as quickly as possible, Pelton said.

Part of the reason for the rerouting is that this year's football traffic is expected to be the heaviest in the University's history. Pelton said that "we don't want people walking across fields to the stadium because this interferes with cars which are parking in the area."

The rerouting of traffic coming from outside of town will be as follows:

- Traffic coming from the south and east on Rt. 322 (from Boalsburg) will be directed by a sign near the Autoport Motel to take a right turn at S. Pugh St. to E. Foster Ave. which leads into the University Rd.

- Traffic from the west (Altoona, Pittsburgh) on Rt. 322 will be directed by a sign at Skytop, to turn onto the Matternville Rd. which leads to the stadium.

- Traffic from the Huntingdon area on Rts. 45 and 545 will turn left at College Ave. (Rt. 45) and Atherton St. (Rt. 545) and approach the stadium from Park Ave.

- Traffic from the east via Bellefonte will approach the stadium from Porter Rd.

## BIKE

REPAIRS  
PARTS  
ACCESSORIES

Western Auto

200 W. College Ave.  
AD 7-7992

EVERY  
LITTER BIT  
HURTS



Hold your trash! Stash every litter bit in your car litterbag or the nearest container.  
You Can Help Keep America Clean and Beautiful



### Tax Amendment--

(Continued from page one)

a second time in the House was due to a parliamentary law which states that at least two people, who voted with the prevailing side, may request the measure to be brought up for a re-vote.

In referring to this maneuver last week, Hays said he felt this was done to give proponents of the bill more time to sway votes in its favor. He also mentioned that this might give Governor Lawrence the opportunity to persuade the 29 Democrats who voted to defeat the bill to change their views.

at Penn State FOR COMFORTABLE ROOMS  
Try **The Colonial**  
123 W. NITTANY AVE. STATE COLLEGE, PA.  
All with Running Water or Private Bath - Parking



Mac Sez ...

... you'll find the finest for fall

- right here:
- Mallory hats
- Puritan sportswear
- Pioneer leather goods
- Dickies casual slacks
- Esquire & Adler socks
- PF Flyer sneaks
- Shaw shoes

Just a few of the nationally advertised brands available at nationally advertised prices.

FROM  
HEAD  
TO TOE

HABERDASHERY



In the Center of Pennsylvania

Free Parking At Rear of Store While You Shop • 229 S. Allen St. • AD 8-1241

WELCOME  
RAINBOW GIRLS!

STOP IN AND SEE THE  
PENN STATE  
RAINBOW  
SWEATSHIRTS

and a complete line of Penn  
State Gifts and Souvenirs

You Can Get It At

**METZGERS**

111-115 S. Allen St.