

Alumni Memorial Funds Aid Outstanding Students

By SARALEE ORTON

(This is the first article in a series on the activities of the Penn State Alumni Association.)

The efforts of alumni to attract outstanding students to the University for the past six years has proved highly successful, according to Ross B. Lehman, executive secretary of the Alumni Association.

Students who have been nominated for Alumni Memorial

Scholarships by District Alumni Clubs have graduated from the University with a collective average of 3.44 which Lehman said, "is pretty doggone good."

In addition, Lehman said Alumni Scholars have included a president of Mortar Board, an All-University president, and valedictorian and salutatorian of the Class of '59.

The Alumni Memorial Scholarship program was established in 1955 because it was believed that the University lacked a sufficient number of scholarships awarded basically for academic reasons, Lehman said.

Under this program, he explained that scholarship committees of the 70 or more District Alumni Clubs act as "talent scouts" for outstanding high school students. The primary requisite for scholarship candidates is high scholarship, he said, but leadership and need are considered on a secondary basis.

Final selection of winners is made by a committee at the University which awards the amount of in-state tuition to those selected, he said. The scholarship committee requires that Alumni Scholars maintain a 3.00 All-University average while at the University, he said.

Fourteen Alumni Scholarships were awarded last year, and 15 additional scholarships to winners will be announced in May, Lehman said. More than 300 candidates have been nominated this year, he said.

"It is too early now to determine how well Alumni Scholars have succeeded in their occupations after college," Lehman said, "but it has been discovered that they are better, more interested alumni." He said a larger percentage of Alumni Scholars than of other alumni are active members of District Alumni Clubs and contribute to the alumni fund.

2 Awards Presented at Panhel Tea

Two annual Panhellenic Council awards were presented at the officer installation tea held recently at the Nittany Lion Inn.

Marcia Hamm, member of Delta Zeta sorority and past Panhel rush chairman, received the Miss Panhellenic award for her outstanding contribution to the council during the past year.

The award for greatest academic improvement went to Alpha Omicron Pi for climbing to sixth place in the sorority and fraternity scholastic average rating with a 2.90 average. The sorority placed 23rd last year with a 2.69 average.

Janice Wanner, Alpha Omicron Pi, and former first vice president of Panhel, automatically became the new president as provided in the constitution.

Other officers installed at the tea were Susan Common, Phi Mu, first vice president; Pamela Chadwick, Phi Mu, second vice president; Joan Zimmerman, Alpha Chi Omega, treasurer; Barbara Yunk, Delta Zeta, corresponding secretary; and Margaret Krick, Delta Gamma, recording secretary.

New Study Program Gets 150 Applicants

More than 150 students have submitted provisional applications for the Study Abroad Program, according to Dr. Dagobert de Levie, Liberal Arts advisory committee chairman. This is two weeks prior to the May 1 deadline.

The Study Abroad Program is divided into two plans. A specialized study is available for those who wish to spend an entire academic year at a foreign university with a special leave of absence.

The elective plan is a 10-week term spent at a foreign university as a registered Penn State student.

Approximately ten per cent of the applicants wish to participate in the specialized study and the remainder applied for the elective study.

The majority of students expressed preference for study in French speaking countries, but a large number preferred German and Spanish speaking countries, de Levie said.

"As of yet, no decisions have been made as to where our first connections will be established," he explained.

Each applicant will receive acknowledgment of his provisional application next week, de Levie said.

An open discussion will be held at a later date for those who have expressed the desire

to participate in the program, explained de Levie. This will be the place to air all questions concerning the program.

Most of the students who have applied have over a 3.0 All-University average. "The 2.5 minimum average serves as an incentive to many to strive for eligibility for the program," he said.

He said that he expected a director for the Study Abroad Program to be appointed in the near future by Ben Euwema, dean of the College of the Liberal Arts.

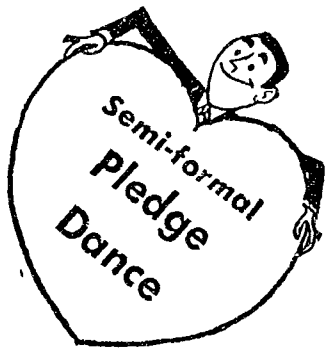
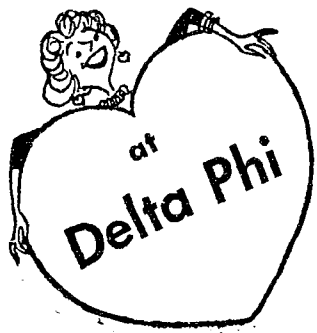
"The advisory committee is making every effort to implement the recommendations presented to and accepted by the LA college faculty," de Levie explained.

Provisional application forms are still available in 138 Sparks.

Wetzel Takes 1st Place In Chess Club Tourney

The Chess Club's Spring Improvement Tournament which began seven weeks ago was won Wednesday night by Gerry Wetzel, senior in psychology from Indiana, Pa.

Saint Elmo Ball



closed

Pi Lambda Phi

227 E. Nittany Ave.

PI LAM Goes Broadway

April 15, 1961

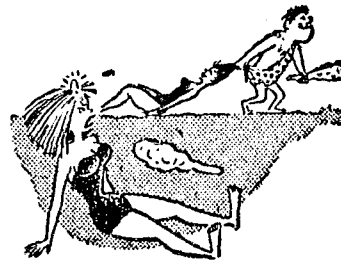
Two on the aisle

Sat. evening

The Music of Kenny Koons

Closed

For a Night of Fun!



Join Alpha Chi Rho and the Flintstones

Open

ALOHA!



Is This Where SIGMA CHI'S HAVING a South Sea Island Party?

Open to Couples After 11



LUCKY YOU!

Going to KAPPA SIGMA's Roman Party TONIGHT!!

Closed



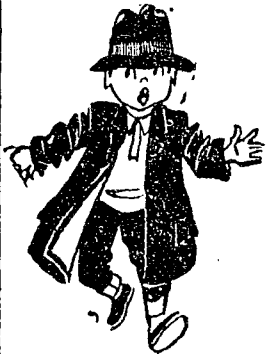
PI KAPPA PHI PRESENTS The Annual Rose Ball Formal Jim Elliot Quartet

Closed til 11 P.M.



Wake Up! It's time for Delta Theta Sigma's Spring Dinner Dance

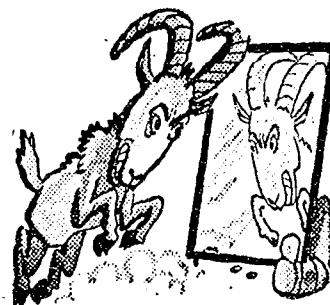
MUSIC By — The Melody Men Alpha Kappa Lambda Quartet



Everyone's going "Clod" to Phi Sigma Kappa's Jam Session

Music by "the D.L.J.'s"

Closed 8:00 to 11:00 P.M.



Open at 11

Reveal your Suppressed Desire at

PHI MU DELTA



A Party Like Alpha Chi Sigma's BLACKBOARD JUNGLE

Music By THE TWINTONES

Open at 11



MEXICAN PARTY AT ZETA BETA TAU WITH RICHIE AND THE UNDERGRADS

OPEN AT 11



PHI SIGMA DELTA PRESENTS BERNIE EDMONDS QUINTET

AT THE "DOGPATCH DAZE"

OPEN AT 11



A Dream— of a party! PHI KAPPA PSI Presents its annual Pajama Party

closed