

# Elex Results Of Women's Groups

(Continued from page one) fused to reveal any voting statistics on the balloting.

## WRA

Nancy Barnhart, sophomore in elementary and kindergarten education from Pittsburgh, won the vice-presidency with 590 votes to 483 for Sue Callahan.

The new WRA secretary is Janis Beachler, freshman in liberal arts from Pittsburgh, who won with 567 votes. She defeated Cathy Creighton who had 496 votes.

Nancy Lees, freshman in home economics from Philadelphia, defeated Gretchen Kauffman in a vote of 547 to 502, for treasurer.

Sophomore representative is Sue Anderson, freshman in liberal arts from West Englewood, N.J. She opposed Margaret Thompson in a 198 to 162 vote.

Mary Williamson, freshman in agriculture from Lancaster, won the office of freshman representative over Nancy McIlwain, 225 to 147.

Approximately 700 women voted in the WRA elections.

# Abolishment Proposal

(Continued from page one) inite constituency, are you responsible to the present system?" he asked.

Assemblyman James Sloane, freshman class president, answered Alexander's question with another one.

"Is it the form of government or the people that's wrong?" he asked Alexander.

Alexander also got opposition from Dennis Eisman, acting Campus party chairman. Eisman accused Alexander of "denying the student body the right to know about reorganization before the first reading of the revised constitution last week.

## Gershenow Quits--

(Continued from page one) man, until a new one can be elected.

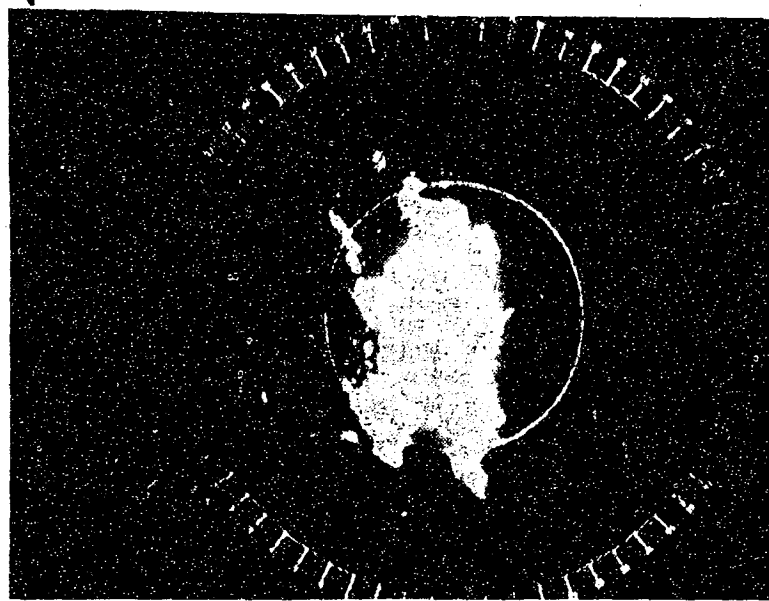
In commenting on Gershenow's resignation, Miss Harris said he would continue to work closely with the party and to express his ideas and stands on policies.

She also explained that there were no "rifts" between Gershenow and the party and that this was not a reason for his resignation.

## Creole Foundation Gives University \$500 Grant

The University has received a \$500 grant from the Creole Foundation that will be used in assisting international students.

Dr. William H. Gray, director of international student affairs, said that the funds will be used for emergency loans, not exceeding \$100 each, to international students.



**RADAR VIEW OF A SNOW SQUALL.** The north-south white area in the center of the scope represents an area of heavy snow, which had just passed State College (center) at the time of the picture (9 a.m.). This squall, which is moving toward the east (right) at 15 miles an hour, brought two inches of wet snow to this area yesterday morning. The first circle represents a distance of 18 miles from State College and the outer circle is 36 miles away.

# Season Becomes Snowiest in History

By JOEL MYERS  
Assistant City Editor

The 1960-61 winter became the snowiest on record yesterday as the season's total snowfall surpassed the 74.9 inches that fell in the historic 1941-42 season.

Yesterday's snow, 2 inches of which fell in a heavy squall between 8 and 9 a.m., boosted the 3-day total to 7 inches. The season's total now stands at 78.3 inches.

The snow squall that struck this area yesterday morning created a major traffic problem in some sections of State College. Work-bound motorists got stuck without chains in the blinding snow.

Temperatures failed to fall much below the freezing mark for the past two days; consequently the snow hasn't frozen solid. However, side streets were quite slippery in spots yesterday and last night.

The 1941-42 winter was made famous by two heavy snowstorms in March. A total of 47.5 inches fell that month, 30.5 inches of which fell in a huge storm in the last week of the month.

Cloudy and cold weather should remain through tomorrow and

periods of light snow or rain are likely. However, not much additional snow accumulation is expected.

The weather pattern remains complex and slow-moving throughout the eastern portion of the United States. Skies have been mostly cloudy from the Mississippi River to the Atlantic coast since Tuesday and little change is forecast for today.

A high temperature of 39 degrees is predicted for today and a low of 30 is seen for tonight. Tomorrow's maximum will be near 43 degrees.

Central Pennsylvania was probably the coldest area in the 48 adjoining states yesterday afternoon as snow and cloudy skies maintained readings in the low and middle 30's. Temperatures reached the 40's and 50's in New England and the north-central states.

# Froshmore Duo To Offer Prizes

Approximately 21 door prizes ranging from a madras sports jacket to a chocolate Easter bunny will be awarded at the Froshmore Duo which will be held from 9 to 12 tonight in the HUB ballroom.

The Freshman Class Advisory Board will display the door-prizes from 10 a.m. to 5 p.m. today outside the Book Exchange. The prizes have been donated by State College merchants.

Tickets for the dance are available at the Hetzel Union desk. There is no charge but matriculation cards must be presented. Tickets will also be available at the door.

Penn State jazz singer Frieda Lee will be mistress of ceremonies and music will be provided by the Swingettes. The Gamboliers, a folk singing group, will also be featured.

COLLEGIAN CLASSIFIEDS  
BUY, SELL, TRADE, TELL

# Mason to Speak Tonight

Dr. Thomas Alpheus Mason, McCormick professor of jurisprudence at Princeton, will speak at the political science faculty and graduate students seminar at 8 p.m. tonight in the main lounge in McElwain.

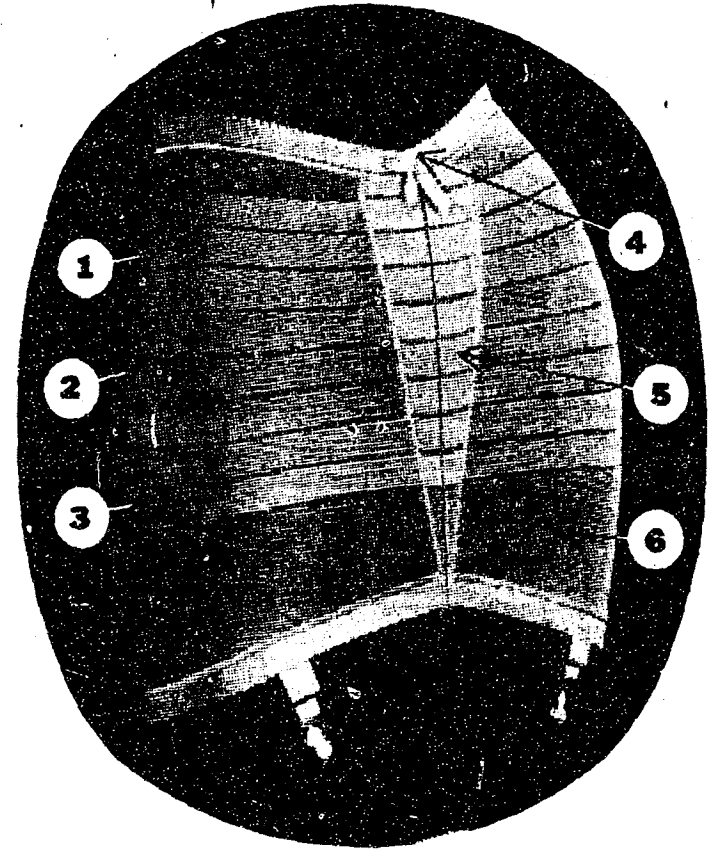
His topic will be "Constitutional Limitations in a World of Continuing Crisis."



# PETER PAN



Live action control for the young-in-figure!



1. **FIRMOLASTIC™ STRIPES** are woven in! Gives you fortified control at tummy, hips, derriere; eliminates girdle weight, bulkiness, rigidity!
  2. **AIR-STRIP INTERPLAY** assures cool comfort!
  3. **WHISPER-LIGHT!** 3 ounces of sheer power, this little panty girdle makes you look pounds lighter!
  4. **STAY-SNUG DIP WAIST** can't wrinkle, roll, bind!
  5. **SKIN-SMOOTH!** No overlapping seams, no hems, no bulky panels - as smooth inside as outside!
  6. **RELAX-WEAVE AT BOTTOM AND TOP** - extra flexibility for sit-stretch-stride ease!
- The secret's in the Tiger stripes! Fortified Control where needed, Relaxed Control where wanted - both in one ingeniously constructed stretch fabric!

Tiger Cub girdle, panty—only 3<sup>95</sup>

no body is perfect every body needs Peter Pan.

# SMART SHOP

123 South Allen

Easter  Gifts  
Fine Jewelry Other Distinctive Presents

## TREASURE HOUSE

# JAM SESSION

SATURDAY AFTERNOON 2-4

at

# WEST HALLS

featuring by popular demand  
the fantabulous

# NITTANY 5