

# Panhel Fails To Clarify Rush Rules

Attempts to change the regulations regarding open contacts and restrictions on Greek-rush relations during the semi-strict silence period were unsuccessful as Panhellenic Council accepted a new rushing code Tuesday night.

The main issue raised in the open contact regulations revolved around the definition of planned entertainment. As the code now stands no planned entertainment in the sorority suites in which sorority women live is permitted during open contacts.

A request from Janet Carlisle, Kappa Kappa Gamma, to state more exactly what is permitted during open contacts led several council delegates to suggest limitations on the number of people allowed in the room a rushee is visiting, regulations on the singing of sorority songs and other specifications.

Other members said that attempts to limit open contacts would lead to more confusion. "The emphasis for this program is on personal relationships; this is not a rush period," Marcia Hamm, Panhel Rush Chairman, pointed out.

The regulation finally approved defines planned entertainment as "organizing any kind of system for pre-rush" and leaves the responsibility for preventing the system from becoming a rush period to the sororities themselves.

## Issues 1960

# Prof Discusses Defense Plans

By LYNNE CEREFICE  
(This is the tenth in a series—Issues 1960—on the stands of the presidential candidates with interpretations by University professors.)

Under the defense programs of both Vice President Richard M. Nixon and Senator John F. Kennedy, Henry H. Chisman, associate professor of forestry, said "it appears as though we would wait for the Communist nations to act and then we would react."

Chisman is a former delegate to the National War College, a war strategy seminar in Washington, D.C.

Kennedy has suggested a \$2.5 to \$3 billion increase in our military budget. Nixon, on the other hand, would maintain the Eisenhower budget of \$40 billion annually, providing for necessary increases to meet new situations.

Nixon's proposal would therefore mean a gradual, continued increase in military expenditures, while Kennedy's plan would advocate an "up and down" budget, Chisman said.

Chisman said that the nation's military strength would be able

to grow under a program of gradual increase in military expenditures but would not necessarily grow on a sudden increase and decrease basis.

"Our military budget should be increased," Chisman said. He explained that at the present time the United States is spending about 10 per cent of its total annual budget on defense while Russia is spending about 30 per cent annually.

"If we increased our military expenditures," Chisman said, "Russia would be forced to do the same. The Russian economy could not stand such an increase, whereas ours could."

On the question of world disarmament, Kennedy favors a greatly expanded effort toward this goal whereas Nixon suggests a more gradual approach.

"Until our military power is great and our will to use it is also great, our policy on disarma-

ment could not be effective," Chisman said.

In discussing the United States' position in military strength in the world today, Chisman said, "there is an over-emphasis on our part and on the part of the Russians on rocket power." Chisman said "the Russians are ahead in some areas of rocket power only."

"In military power, which means total production, we are (Continued on page eight)

**Lobster House**



5. BIRTHDAY AT STATE COLLEGE  
OPEN 7 DAYS  
5:30 P.M.  
SUNDAY 12:30 P.M.

TAXI RETURN GRATIS

**STATE NOW**

Feat: 1:56, 4:29, 7:02, 9:25

"A ROBUST Show of Razzie-Dazzle... A Wonderfully Engaging Movie!"  
—New York Mirror

TRACY MARCH KELLY

**INHERIT THE WIND**

RELEASED THRU UNITED ARTISTS

—The Collegian was founded in 1904.

**CATHAUM**  
NOW 1:45, 3:40, 5:35, 7:35, 9:30  
Screen Times



DORIS DAY · REX HARRISON  
JOHN GAVIN  
*Midnight Lace*  
in Eastman COLOR

**NITTANY**  
NOW Feature at 7:05 - 8:25 - 9:40  
Edgar Allan Poe's  
**"HOUSE OF USHER"**  
with VINCENT PRICE  
In CinemaScope and Color

Starts **"TIGER BAY"**  
SUNDAY

**LION HOP**

Saturday Night 9:00 - 12:00

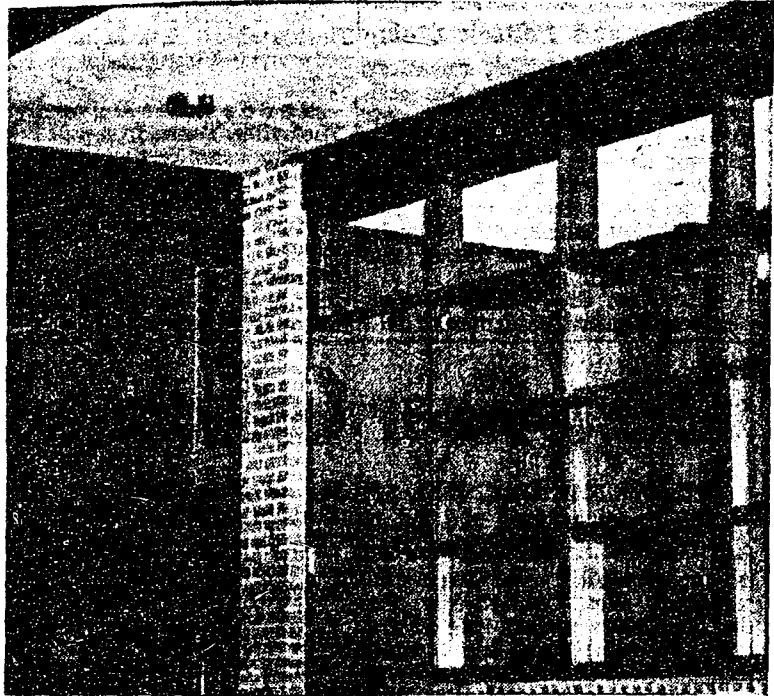
To Be Held In Place of Club Hubana

Sponsored by Independent Student Assoc.

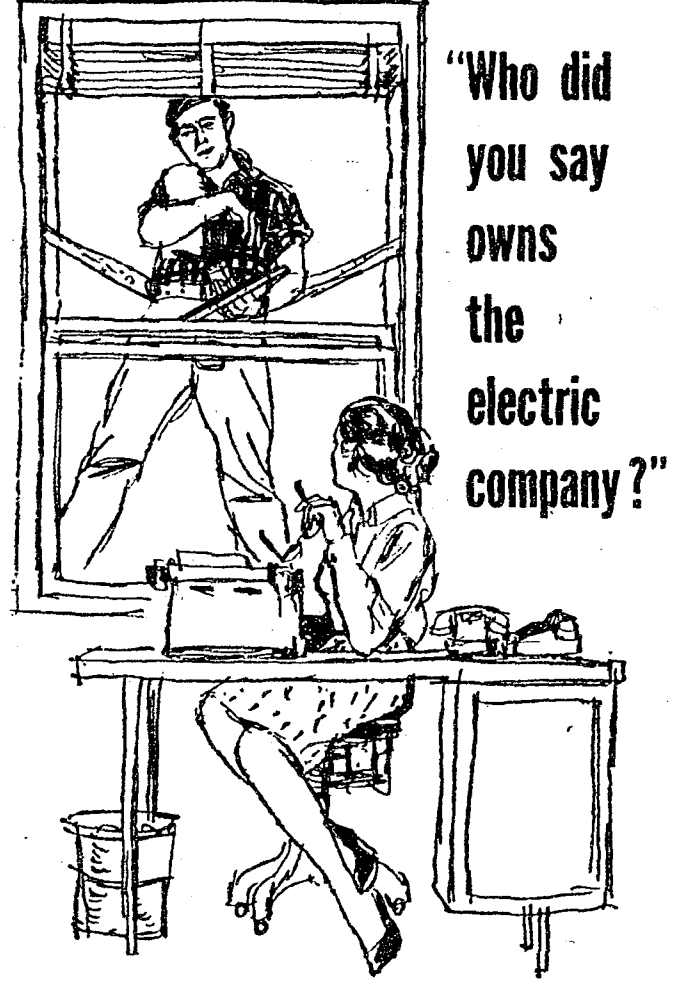
ADMISSION FREE!

An Invitation

The brothers and Pledges of Zeta Beta Tau cordially invite all fraternity men and rushees to the opening of our new chapter house at four twenty-seven east Fairmount



Saturday, November Sixth  
Nine to One  
Music by The Four Dimensions




People. Thousands of people. Farmers and housewives and engineers. Doctors and secretaries and railroad men. All kinds of people.

They own the electric company because they invest money in it, and thus help it grow and serve you better.

This kind of ownership makes the electric company an independent business. It's not owned by the city nor by the state, nor by any government.

And this kind of ownership means you can always be sure of plenty of electricity . . . and at a bargain price.

**WEST PENN POWER**



owned by people, not by government

On Route 322 at Boalsburg


**Nittany Lion**  
DRIVE IN THEATRE

Tonight, Saturday, Sunday

**THE CROWDED SKY**  
starring DANA RHONDA  
ANDREWS · FLEMING  
EFREM JOHN ANNE  
ZIMBALIST JR. · KERR · FRANCIS  
KEENAN TROY  
WYNN · DONAHUE

Presented by WARNER BROS. TECHNICOLOR®

AL BURT LANCASTER in  
SO Jim Thorpe All American



You can mail Kodachrome Film to Kodak for processing. And get it back by mail, too!

Convenient, time-saving way to get Kodak processing of your Kodachrome color slides and movies. Simply stop in here and get a supply of Kodak Prepaid Processing Mailers — the price you pay for the mailer is the price of the processing. Send exposed film in the Mailer to Kodak. Kodak will process your film and return your pictures directly to you.

All Kodachrome, Kodachrome or Ektachrome Film left here for processing is sent to Eastman Laboratories.

**Griggs PHARMACY**  
120 E. COLLEGE AVE.  
STATE COLLEGE, PA.