

Hall, Hoak Lead Lion Grid Offense

(Continued from page one) it's hard to find two better quarterbacks in the East.

They're excellent passers, and Hoak, a converted halfback, is always a running threat.

In five games, Hall has completed 25 of 58 passes for 281 yards and three touchdowns. Hoak has completed 12 of 23 for 119 yards and one touchdown.

Hall's first unit halfbacks will be Jimmy Kerr and Don Jonas.

Jonas is rapidly developing into Penn State's most exciting performer.

The Scranton, Pa., junior is Penn State's third leading ground gainer and he didn't even play in the opener.

He's carried the ball 28 times for 135 yards, including a 45-yard touchdown jaunt against Syracuse.

Jonas also is a fine passer, having been a quarterback during his high school days. He likes to throw from his halfback post and connected on a 46-yarder with Bob Mitinger in the Syracuse game.

Steady Sam Sobczak will round out the lineup at fullback. He'll be backed up by sophomore Dave Hayes, a power runner who is expected to develop into one of Penn State's top fullbacks.

The front line finds Mitinger and captain Henry Oppermann at end with Stew Barber and Jimmy Smith at tackle.

Jay Huffman is the center and he'll be flanked by brusing Bill Popp and sophomore Joe Blasenstein at guard.

West Virginia will count heavily on the passing of quar-



GALEN HALL
... Lion signal caller

terback Dale Evans and the rushing of fullbacks Don Myers and Bob Benke this afternoon.

Evans, a junior, has caused plenty of surprise in the hill country with his accurate tosses.

He has completed 23 of 54 for 242 yards and seems to have won the starting job from last year's starter Danny Williams.

Myers and Benke are West Virginia's top ground gainers



BILL WINTER
... Mountaineer tackle

with 126 and 121 yards and both can really ramble if they get the opportunity.

A pair of fine sophomores—Tom Woodeshick and Jim Moss are scheduled to start at halfback for the Mounties today.

Up front, the Mountaineers will probably start Bob Timmerman and Dick Struck at ends.

Veterans Glenn Bowman and Bill Winter will be at tackle and Pete Tolly and Bob Fuller are the guards. Co-captain Chuck Lanasa will be the center.

West Virginia's other co-captain, quarterback Carmen Pomponio, is one of West Virginia's top defensive-backs.

Next week, the Lions will entertain Maryland in Beaver Stadium while West Virginia meets Boston University in Morgantown, W.Va.

State won last year's game in Morgantown, 28-10, with Roger Kochman leading the way with 111 yards in eight carries.

State-Mountie Lineup

Wt.	PENN STATE	Pos.	WEST VIRGINIA	Wt.
205	Henry Oppermann (C)	LE	Bob Timmerman	176
225	Stew Barber	LT	Bill Winter	216
197	Joe Blasenstein	LG	Dick Struck	216
205	Jay Huffman	C (CC)	Charles Lanasa	196
205	Bill Popp	RG	Bob Fuller	204
228	Jim Smith	RT	Glenn Bowman	210
210	Bob Mitinger	RE	Ken Herock	207
185	Galen Hall	QB (CC)	C. Pomponio	190
190	Don Jonas	LH	Jim Moss	193
182	Jim Kerr	RH	Tom Woodeshick	186
196	Sam Sobczak	FB	Bob Benke	215

KICKOFF: Today at 1:30 p.m. DST at Beaver Stadium.

ATTENDANCE: 38,000 including 4,800 Band Day musicians.

PENN STATE'S 2ND UNIT: Ends—Bozick (97) and Truitt (82); Tackles—Sieminski (77) and Farkas (76); Guards—Berfield (68) and Robinson (67); Center—Saul (52); Quarterback—Hoak (23); Halfbacks—Gursky (43) and Pae (11); Fullback—Hayes (34).

WEST VIRGINIA'S 2ND UNIT: Ends—Bazzoli (83) and Schneider (85); Tackles—McGraw (76) and Sizemore (74); Guards—Melenyzer (62) and Bonar (54); Center—Shillings (56); Quarterback—Evans (12); Halfbacks—Holinsky (24) and Marra (41); Fullback—Meyers (34).

AVERAGE WEIGHT OF LINE: Penn. State (210); West Virginia (204).

AVERAGE WEIGHT OF BACKS: Penn. State (188); West Virginia (196).

NEXT WEEK'S GAMES: Maryland at Penn State; Boston at West Virginia.

SERIES: Penn State holds 17-7-2 edge since 1904.

RECORDS: Penn State (2-3) Multiple T; West Virginia (0-5-1) Multiple T.

Five Unbeaten Grid Titans Expect Tough Battles Today

By JACK CLARY
Associated Press Sports Writer

Iowa, Mississippi, Syracuse, Navy and Baylor take one look at their unbeaten records, give a quick thought to all the talk of postseason bowls, then go to work today to try to discourage a quintet of upset-minded football opponents.

The five members of college football's top ten in the latest Associated Press poll have their work cut out for them. Four others dare not let up lest their high ranking disappear.

Only sixth-ranked Minnesota (5-0) appears safe. The Gophers, looking ahead to next week's crucial Big Ten battle for first place against top-ranked Iowa, are five-touchdown favorites over Kansas State of the Big Eight.

Four members of the elite dominate the card in the Midwest while Syracuse and Pitt have the East's attention. Seventh-ranked Baylor (5-0) tries to keep atop the Southwest Conference when it plays tough Texas Christian, while ninth-ranked Washington has a toughie in once-beaten Oregon.

Iowa (5-0) had its task beating Kansas made tougher when the NCAA put the Jayhawks on probation for alleged recruiting violations. Kansas vowed immediately that there would be extra

effort to beat the No. 1 Hawkeyes.

In a Big Ten battle for survival eighth-ranked Ohio State plays Michigan State (No. 10). Both are once-beaten in conference play but the Spartans got short-changed in the conference victory column when their win over Indiana, on conference and NCAA probation, went for naught.

Missouri, (No. 5) tries to protect its share of the Big Eight lead against Nebraska, which has beaten Texas and Army in splitting six games. Colorado, tied with the Tigers for the conference lead (3-0) plays Oklahoma, the defending champions.

The fourth-ranked Middies, with their first perfect season a distinct possibility and mentioned prominently for the Rose Bowl, are a two-touchdown choice over Notre Dame.

In the South, Mississippi (No. 2) meets Louisiana State (1-5), one of the best defensive clubs in the nation.

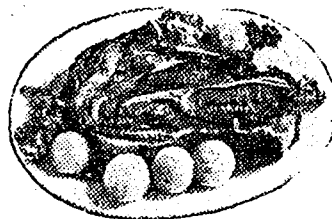
Harbor View Favored

CAMDEN, N.J. (AP) — Harbor View Farm's favored entry of Roving Minstrel and Garwol got the best of it in the draw for post position in today's Garden State, the richest horse race in the world.

PARISH'S
MENS SHOP
Shortlidge Rd. at College Ave.
SPECIAL! Beantneck Sweaters \$7.95

DON'T WAIT

Try Boalsburg's U.S. Prime Steak Today



A thick tantalizing, juicy steak is a treat for all.

BOALSBURG STEAK HOUSE

Free Parking

WANTED
Students and Full-time Workers
with experience in electronics construction. Students applying must be of junior standing or under. Salary commensurate with experience.
Contact Mr. Cook... AD 8-0541



Mister...
you're going to wear
that shave all day!

START WITH THIS NEW FORMULA BEFORE-SHAVE LOTION, stop 4 o'clock stubble trouble! You can shave blade-close, all-day clean, without "tenderizing" your face, when you use Pro-Electric Before-Shave Lotion. It contains ISOPHYL® to give your shaver extra glide-power — refreshes you with that brisk, bracing Old Spice scent. 1.00 no federal tax.



SHULTON