

Chiapetta Accepts Foreign Position

Dr. Michael Chiapetta, associate professor of education, has resigned in order to serve as educational adviser to the International Cooperation Administration in South America.

He has accepted a two-year appointment to participate in various programs designed to improve the instructional program in South American schools.

Chiapetta spent the past year in Peru on a Fulbright Scholarship. He studied the operation of the country's public school system and assisted in the development of teacher preparation curricula.

Land constitutes slightly more than 29 per cent of the total surface of the earth and water composes the other 71 per cent, says a Twentieth Century Fund report.

Photos Feature Japanese Life

By POLLY DRANOV

Snow covering the traditional great pine trees symbolic of old Japan points out a little known fact of the Oriental nation.

This is one of the many faces of Japan illustrated in an exhibition of 50 photographs now on display on the third floor corridor of Sackett Building.

The exhibition is now being circulated throughout the United States by the Smithsonian Institution Traveling Exhibition Service. The photos were lent to the Institute by Magnum Photos, Inc., of New York City.

The pictures are the work of Werner Bischof, a noted Swiss

photographer who had achieved world wide fame prior to his death in 1947.

Old and new Japan are vividly contrasted in the study of the lives of the people of that country.

Skyscrapers and automobiles point out the westernized city life while the rural sections serve as a picture of the past. Modern technology seems rare in the farm areas where women are seen plowing the fields with the aid of a cow.

One photo shows a field filled with umbrellas drying in the sun. The manufacturer uses this method to dry the oil used in the making of his product.

Religion has seen perhaps the least change of any phase of Japanese life.

The activities of the priests recorded by the camera have not changed in over 1000 years.

The Japanese Theatre has in recent years become familiar to the western world. Bischof has photographed the rich costumes and the splendor of this area of Japanese culture again pointing out the ancient traditions and rites still practiced by the dancers and actors.

The exhibition will continue here until Oct. 31. It was first seen at the Art Institute of Chicago. The three sections of the exhibition are entitled "Ancient Japan," "Modern Japan" and "Traditional Japanese Theatre."

Prof Studies Smog Under NIH Grant

New information on the nature of smog, the bane of industrial areas, may result from a basic research project now being carried on by a chemist here.

Dr. I. C. Hisatsune, assistant professor of chemistry, has received a one-year grant of \$7877 from the National Institute of Health, to continue his studies of the properties of compounds formed between the elements of nitrogen and oxygen. It is known that several species of these compounds are found in abundance in polluted air.

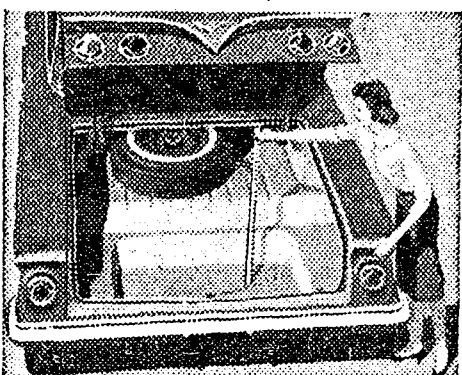
Wisconsin led the nation in the per capita consumption of beer and ale in 1958 with an average 24.5 gallons. Nevada was second with 22.2 gallons and New Jersey, Michigan and Pennsylvania third with 19.9.

HERE! THE GREATEST SIXTY-ONE DEDERFUL CHEVROLET

Here's the car that reads you loud and clear—the new-size, you-size '61 Chevrolet. We started out by trimming the outside size a bit (to give you extra inches of clearance for parking and maneuvering) but inside we left you a full measure of Chevy comfort. Door openings are as much as 6 inches wider to give feet, knees, and elbows the undisputed right of way. And the new easy-chair seats are as much as 14% higher—just right for seeing, just right for sitting.

Once you've settled inside you'll have high and wide praises for Chevrolet's spacious new dimensions (in the Sport Coupes, for example, head room has been upped as much as 2 inches, and there's more leg room, too—front and rear). Chevy's new trunk is something else that will please you hugely—what with its deep-well shape and bumper-level loading it holds things you've never been able to get in a trunk before.

Yet, generously endowed as this car is with spaciousness and clean-etched elegance, it holds steadfastly to all the thrifty, dependable virtues Chevrolet buyers have come to take for granted. Your dealer's the man to see for all the details.

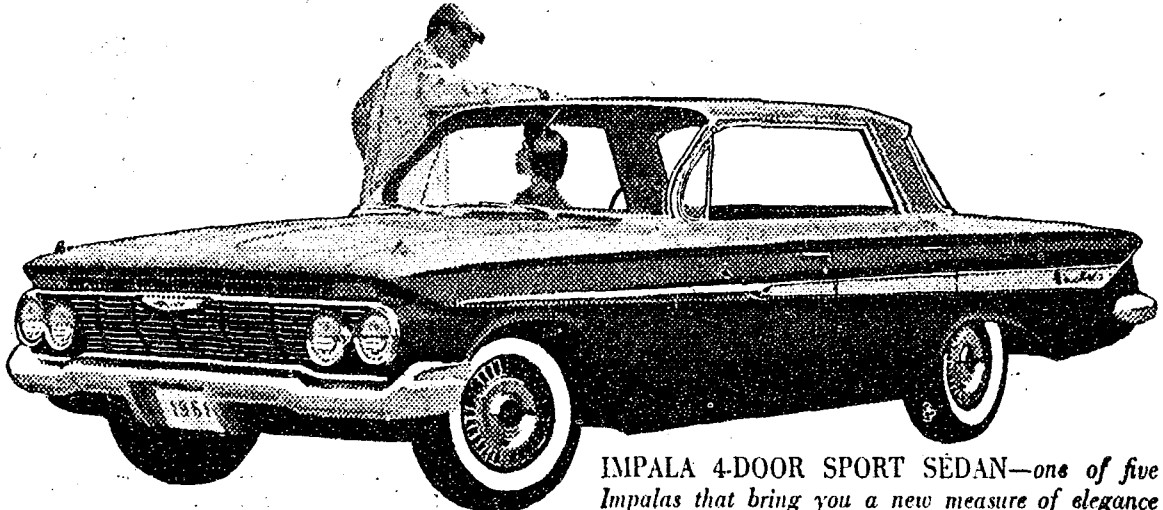


There's never been a trunk like it before! The floor's recessed more than half a foot and the loading height is as much as 10½ inches lower.

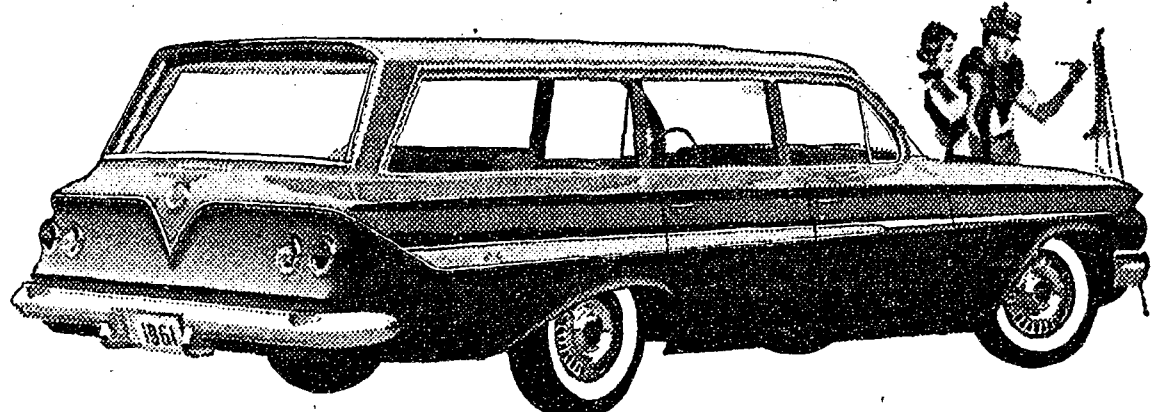
INTRODUCING THE '61 CHEVY BISCAYNE 6

the lowest priced full-sized Chevy with big-car comfort at small-car prices!

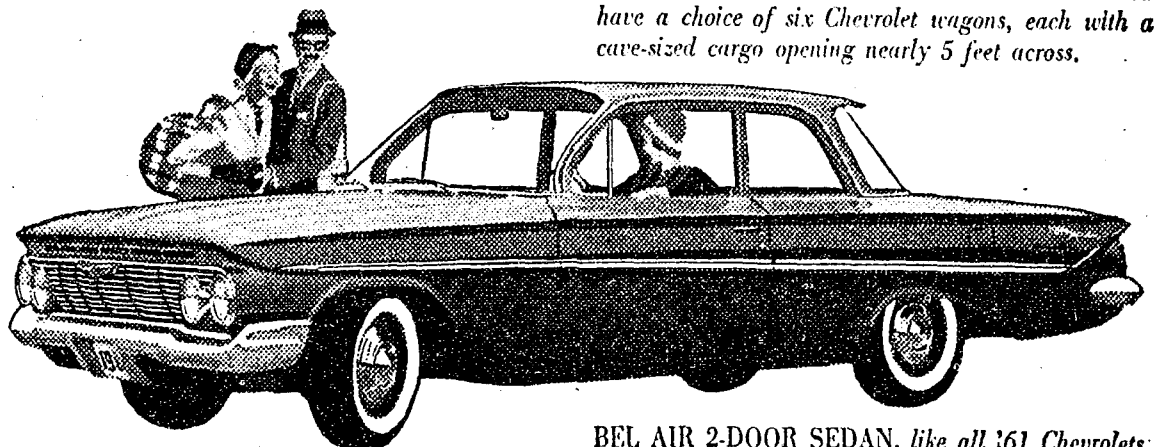
Chevy's new '61 Biscaynes—6 or V8—give you a full measure of Chevrolet quality, roominess and proved performance—yet they're priced down with many cars that give you a lot less! Now you can have economy and comfort, too!



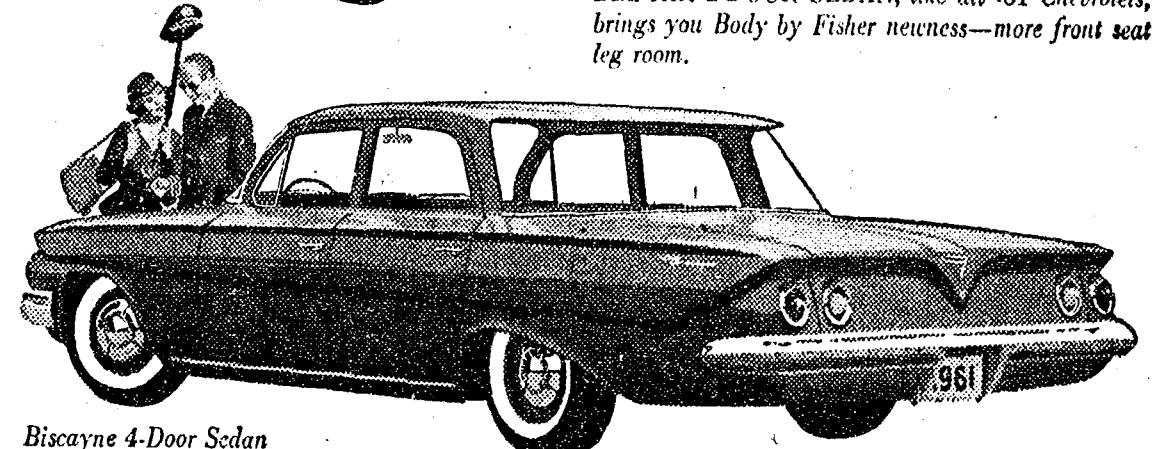
IMPALA 4-DOOR SPORT SEDAN—one of five Impalas that bring you a new measure of elegance from the most elegant Chevs of all.



NOMAD 9-PASSENGER STATION WAGON. You have a choice of six Chevrolet wagons, each with a cave-sized cargo opening nearly 5 feet across.



BEL AIR 2-DOOR SEDAN, like all '61 Chevrolets, brings you Body by Fisher newness—more front seat leg room.



Biscayne 4-Door Sedan

See the new Chevrolet cars, Chevy Corvairs and the new Corvette at your local authorized Chevrolet dealer's