



## All-University Average Rises Slightly from Fall to Spring

The student body made a better academic showing last spring in spite of Whipples Dam as the semester All-University average rose from last fall's 2.43 to a 2.49.

Alpha Epsilon Phi moved up 20 places to a 2.98 and Alpha Zeta retained its average at 2.94 to capture top honors among the fraternity-sorority averages for the spring semester.

## Customs To Remain On Campus

Contrary to the popular suggestion of certain prominently placed notices about campus, CUSTOMS IS NOT OVER!

It seems that these posters, causing unwarranted glee from the freshmen and unduly upsetting upperclassmen, are being circulated by unauthorized parties. Therefore the Freshman Customs Board wishes to repeat, "Customs is NOT over."

The Board will do its utmost to find the culprits and judge them according to the seriousness of their crime. The Customs Board is also anxious for any information leading to the whereabouts of those lofty individuals who have been impersonating Board members and, by calling freshmen, accusing them of violations and asking that they report for hearings.

The violators who have already appeared before the Board are: Joan Schmidt, Trudy Cader, James Crawford, Jay Feldman, Dennis Wagner, Ralph Moffet, James Dunne, Gary Shirgler, Dolores Dutzman, Peter Supp, Barry Khisley, Charles Cofferell.

Lou Stralka, Donald Brant, Louis Kusher, Carol Rielly, Priscilla Staunton, Arlene Beebout, Joanne Hoffman, Mark Schwartz, John Tinker, Eddie Landis, Thomas Fredericks, Philip Holmes, Richard Garuer, Stephen Brent, Jerry Beckley, David Kapoport.

William Rabarick, William Deullo, Joseph Borda, Robert Khublock, Lorna Macintre and Meryl Bernstein.

The All-University women's average was 2.67 and the All-University men's 2.41.

The sorority women's average was 2.81 and non-sorority women 2.67. The all fraternity and sorority average was 2.54. Non-fraternity men had a 2.41 average with the fraternity men averaging 2.40.

In the breakdown according to class, the averages were progressively higher from the freshmen to the seniors. Freshman men had a 2.15, sophomore men a 2.32, junior men a 2.46 and senior men a 2.65. Freshman women had a 2.47, sophomore women a 2.58, junior women a 2.83 and senior women a 3.01.

The averages for the spring semester are as follows: Alpha Epsilon Phi, 2.98; Sigma Delta Tau, 2.97; Kappa Kappa Gamma, 2.96; Alpha Zeta, 2.94; Alpha Chi Omega, 2.90; Beta Sigma Omicron, 2.90; Kappa Delta, 2.89; Pi Beta Phi, 2.89; Delta Zeta, 2.88; Kappa Alpha Theta, 2.88.

Delta Delta Delta, 2.85; Delta Gamma, 2.83; sorority women, 2.81; Theta Phi Alpha, 2.80; Zeta Tau Alpha, 2.79; Alpha Gamma Delta, 2.76; Gamma Phi Beta, 2.75; Phi Sigma Sigma, 2.75; Alpha Phi, 2.74; Alpha Xi Delta, 2.74.

Phi Mu, 2.74; Sigma Sigma Sigma, 2.74; Triangle, 2.72; Chi Omega, 2.71; Alpha Omicron Pi, 2.69; Pi Lambda Phi, 2.68; University Women, 2.67; Acacia, 2.69; Alpha Phi Delta, 2.69; Independent Women, 2.68.

Alpha Delta Pi, 2.55; all fraternity and sorority, 2.54; Alpha Kappa Lambda, 2.54; Sigma Alpha Epsilon, 2.54; Tau Kappa Epsilon, 2.51; Phi Mu Delta, 2.50; Theta Xi, 2.50; All-University, 2.49; Alpha Chi Rho, 2.48; Alpha Gamma Rho, 2.48.

Lambda Chi Alpha, 2.48; Tau Phi Delta, 2.48; Alpha Rho Chi, 2.47; independent men and women, 2.46; Alpha Sigma Phi, 2.46; Alpha Chi Sigma, 2.45; Pi Kappa Alpha, 2.45; Pi Sigma Upsilon, 2.45; Sigma Tau Gamma, 2.45; Phi Kappa Tau, 2.44.

Chi Phi, 2.43; Delta Theta Sigma, 2.43; Sigma Alpha Mu, 2.43; Delta Upsilon, 2.43; Phi Delta Theta, 2.42; All-University men, 2.41; independent men, 2.41; Theta Delta Chi, 2.41; fraternity men, 2.40; Alpha Epsilon Pi, 2.39.

Delta Phi, 2.38; Kappa Sigma, 2.37; Sigma Nu, 2.37; Pi Kappa Phi, 2.36; Beta Sigma Rho, 2.36; Phi Epsilon Pi, 2.35; Phi Gamma Delta, 2.35; Sigma Pi, 2.35; Phi Kappa Theta, 2.33; Beta Theta Pi, 2.32.

Omega Psi Phi, 2.32; Zeta Beta Tau, 2.32; Kappa Delta Rho, 2.31; Phi Sigma Delta, 2.29; Phi Kappa Psi, 2.28; Phi Kappa Sigma, 2.28; Phi Sigma Kappa, 2.28; Delta Chi, 2.27; Sigma Phi Epsilon, 2.27; Theta Chi, 2.26.

Alpha Phi Alpha, 2.20; Sigma Chi, 2.20; Alpha Tau Omega, 2.18; Delta Tau Delta, 2.13; Delta Sigma Phi, 2.11.

### Customs Board to Meet

Freshman Customs Board will meet at 6:30 p.m. today and tomorrow in 218 HUB to examine all cases of reported violations against customs rules.

## Fair Weather To Continue For 24 Hours

With weather systems continuing to move very slowly, the generally fair weather should persist for another 24 hours. Temperatures will remain rather warm during the day with pleasant night-time readings.

A storm system will be developing in the Texas area today and it should begin to move northeast-



ward tonight. This will result in an increase in cloudiness tonight with rain likely tomorrow.

The remnants of tropical storm Florence, which are located near the Florida peninsula, may spread additional moisture toward Pennsylvania tomorrow which may prolong the period of rain into Monday.

The forecast is for partly cloudy and rather warm weather today with an afternoon high temperature of 80 degrees. Tonight will see an increase in cloudiness and rather mild readings. The minimum will be near 62 degrees.

Rain and mild weather is predicted for tomorrow with afternoon temperature readings hovering around the 65 degree mark.

## Dead Identified

WASHINGTON (AP)—The Defense Department yesterday identified 29 persons listed as dead after an air transport plane crashed in the Pacific Ocean off Okinawa early Thursday.

An air and sea search found no survivors after the plane crashed while en route from Japan to the Philippines.

## Washington in Retrospect

# Senate Ruling Create Controversy

By KAY MILLS

(Miss Mills worked this summer in the Washington bureau of United Press International.)

The law designed to bolster the nation's defense through education did not contain the controversial non-Communist affidavit when it originally passed the House of Representatives.

The disclaimer statement was tacked on in the Senate and has since overshadowed many of the other provisions of the National Defense Education Act of 1958.

The NDEA's preamble says it is "an act to strengthen the national defense and to encourage and assist in the expansion and improvement of educational programs to meet critical national needs."

The act therefore provides for federal loans to be administered through universities for students of science, mathematics and modern foreign languages.

# 'K' Hostile In UN Talk

## Says Ike Risks War, Proposes UN Shake-up

UNITED NATIONS, N.Y. (AP)—Soviet Premier Nikita Khrushchev, joining a mighty battle of personal diplomacy with President Eisenhower, denounced the U.S. leader yesterday as risking World War III and urged that the United Nations be moved out of the United States.

Khrushchev threw a handful of shock proposals at the U.N. General Assembly's historic 16th session.

•He suggested that the assembly rip its operating machinery apart, dispensing with the secretary-general.

•He proposed immediate independence for all colonial areas in the world.

•He presented a three-stage package, most of it the old one in new wrappings purporting to look toward complete world disarmament.

•The Soviet premier repeated his bid for a new summit conference with Britain, France and the United States in "a few months," presumably after President Eisenhower leaves office.

U.S. Secretary of State Christian A. Herter quickly labeled the Khrushchev blasts a "real declaration of war against the structure, personnel and location of the U.N." Herter told a luncheon meeting of the Foreign Press Association he would ask the General Assembly to give a strong, new vote of confidence to the secretary-general.

Khrushchev's flurry of proposals appeared to leave many of the delegates bewildered, and some were concerned that he had set back rather than advanced the cause of easing tensions.

There was little conciliatory in Khrushchev's attack on President Eisenhower, based on the May 1 incident on the U2 spy plane. He said that since Eisenhower interpreted that incident as "state policy," the United States could at any moment "plunge mankind into a third world war."

He demanded wide open discussion of the U2 incident and "aggressive" American actions in this session of the assembly.

Secretary-General Dag Hammarskjold, under severe Soviet attack during the Congo crisis in which Moscow suffered a severe diplomatic reverse listened impassively as Khrushchev demanded that the secretary-generalship be eliminated.

Khrushchev proposed instead a three-man board made up of one each of representatives of Communist, neutralist and Western blocs. Then he said the U.N. executive "will really be a democratic body; it will really safeguard the interests of all United Nations members states."

(Continued on page two)

## Expansion Plan May Be Revised

A revision in the much talked about expansion of the University's facilities may be forthcoming in January, C. S. Wyand, vice president for development, said yesterday.

"Things are very fluid right now, and the revisions in redevelopment are dependent on the changes which may be made in the set up of the academic year," he added.

Wyand was referring to the proposed four term plan which will be brought before the executive committee of the board of Trustees on Sept. 30 which would make the facilities of the main campus operate on a full 12-month basis.

"I have three task forces at work now," Wyand said. "One is working on resident education, one on continuing education and one on research. When these committees submit their reports three more task forces will be appointed to study the needs presented by the first reports, as regards manpower, facilities and money."

The four term plan would divide the academic year into four terms, each consisting of about ten weeks. Three terms would be equivalent to two of the present 15 week semesters.

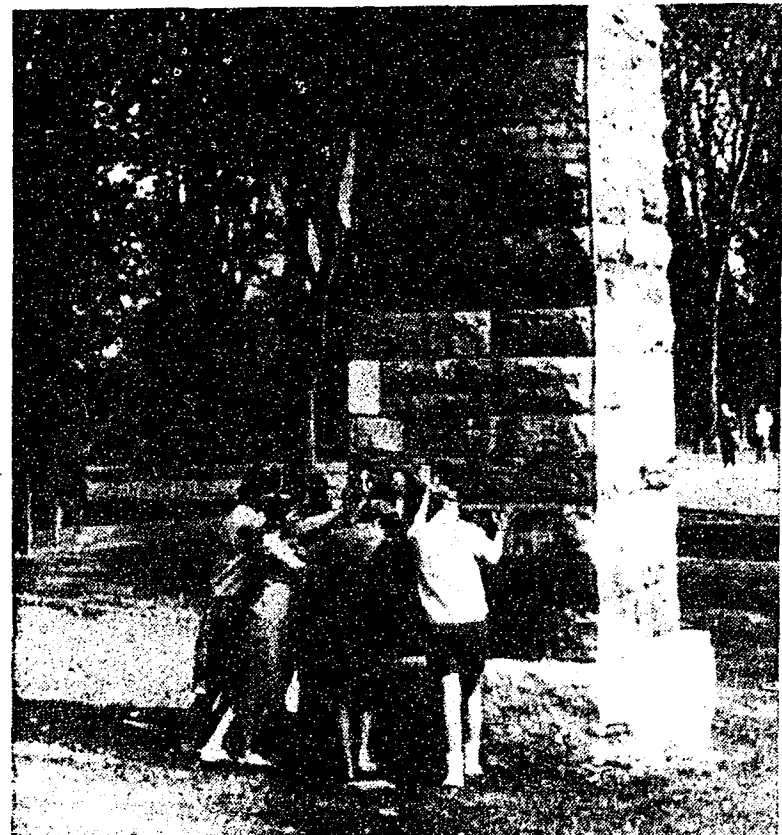
The original Long-Range Development Studies, announced by Wyand's committee in November, 1958, outlined the University's future over the next 12 years.

They were the product of 11 months of intensive work by top members of the faculty and administration. At that time Wyand emphasized that the studies had been accepted "for planning purposes" by the Board of Trustees.

## U.S., India Foods Pact

WASHINGTON (AP)—The United States and India yesterday concluded a new \$17-million surplus foods agreement.

The accord is in addition to a deal last May for sale to India of surplus foods worth more than \$1.2 billion.



**PUSH HARDER**—At least that's what these freshman coeds were told during Customs Khaos Day. However, the Obelisk did not oblige and remained in an upright position.