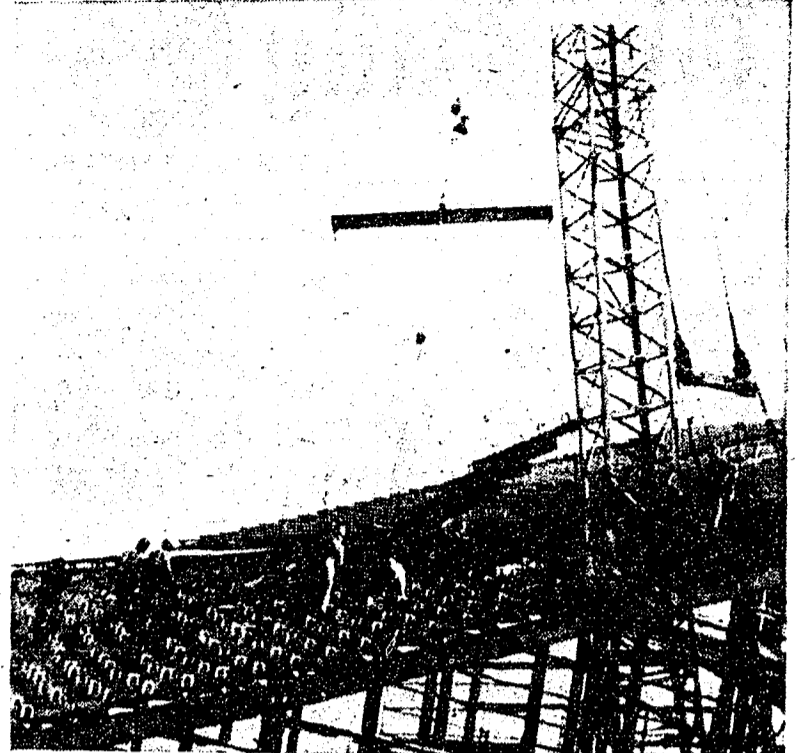
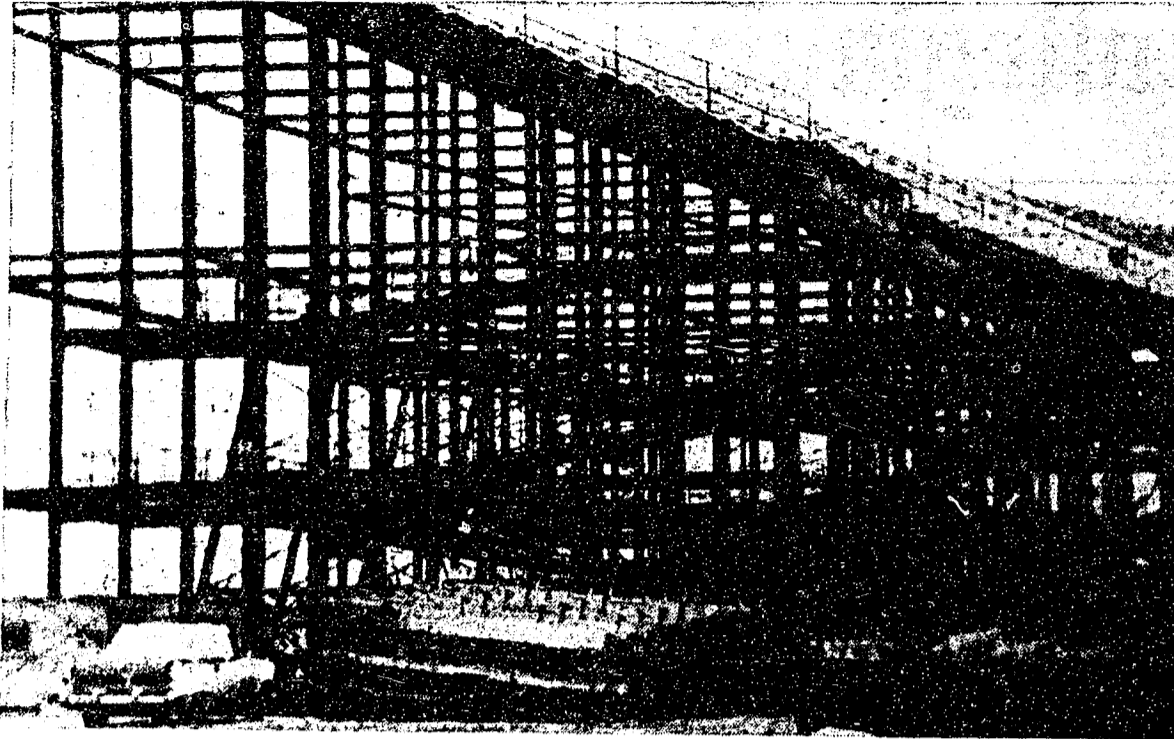


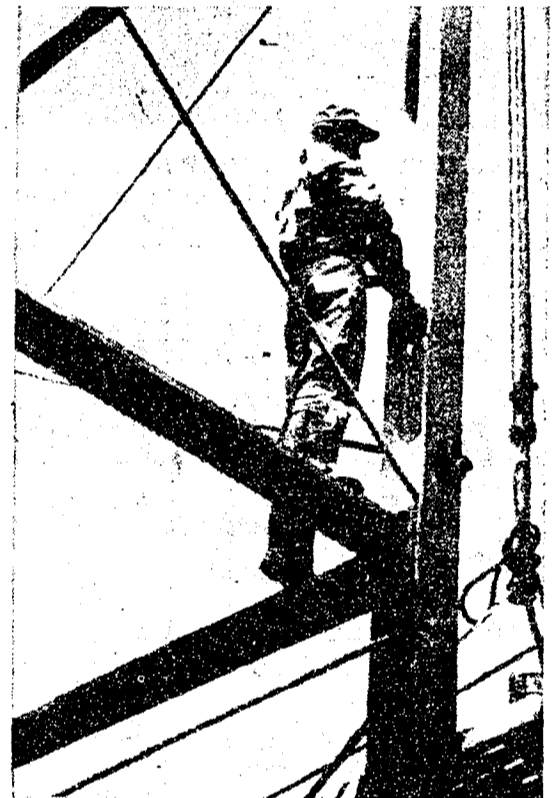
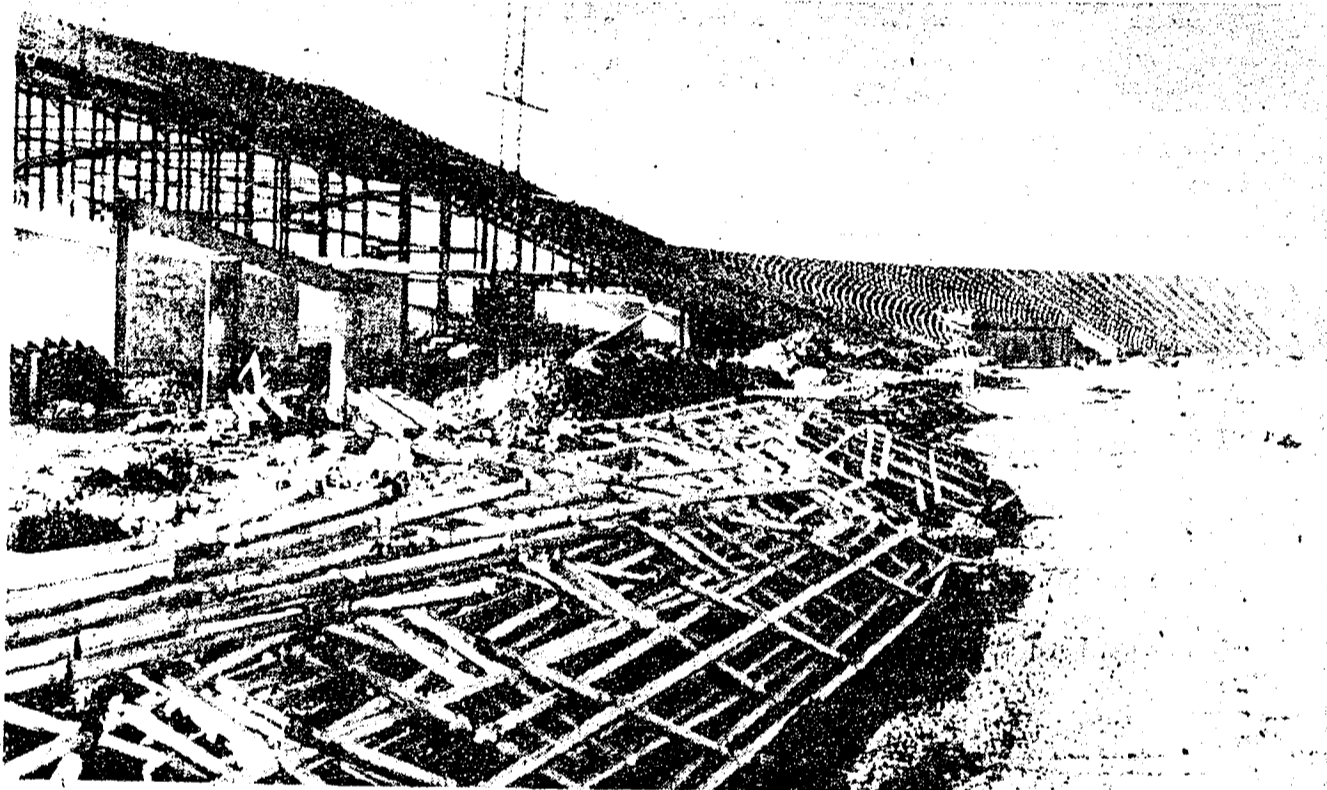
# Birth of a Stadium



**A. CHECKER BOARD MAZE** seems to be formed by the support girders of the west stands. The stadium is the largest all-steel structure in the United States.

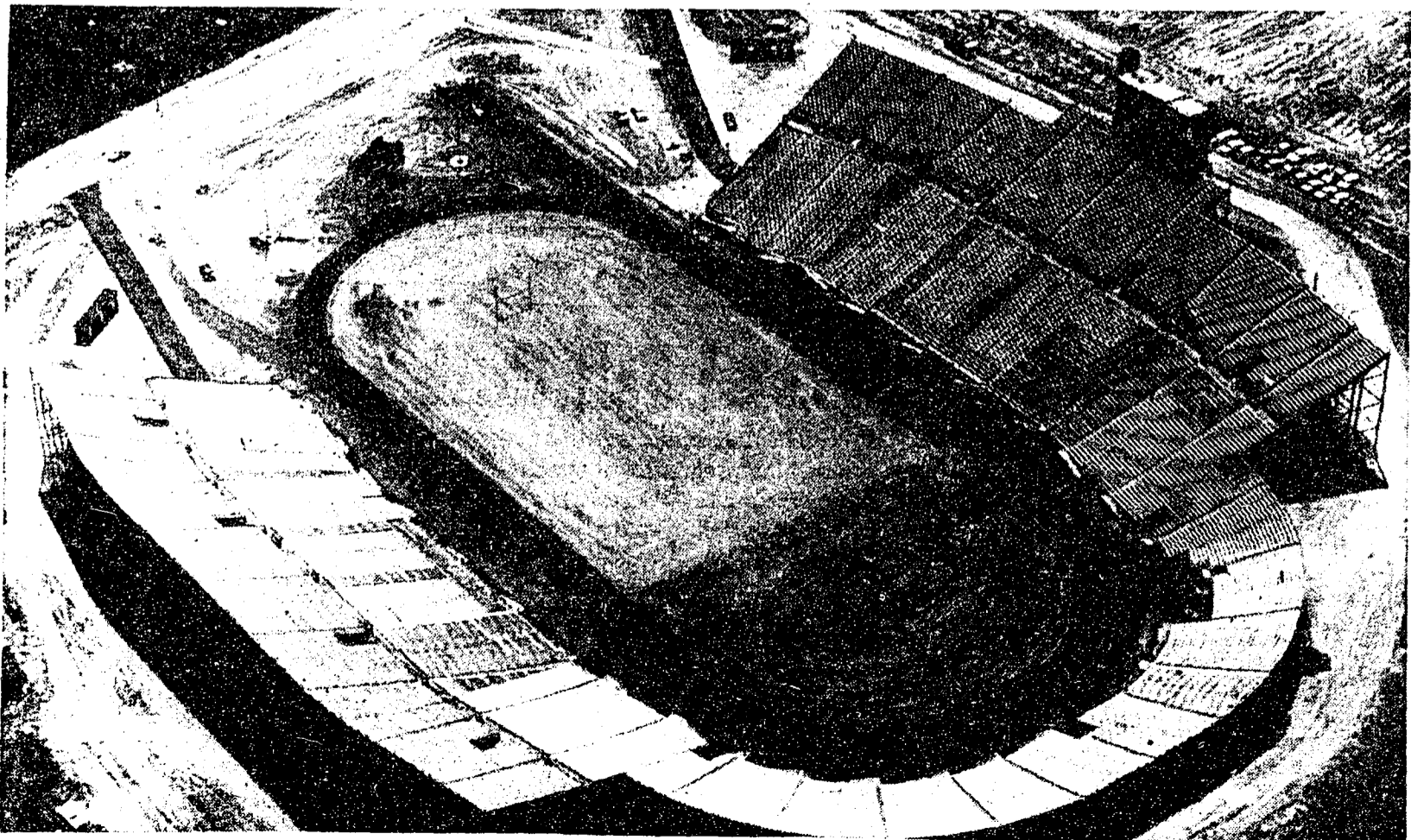
**THE SECTIONS FROM OLD BEAVER FIELD** were fitted against the top sections to form the new Beaver Stadium. The sections had to be moved a mile and a half from their old location at Beaver Field.

● COLLEGIAN PHOTO FEATURE BY RICK BOWER ●



**OBSTACLES ON THE TRACK**—The railings from Beaver Field lie in the track awaiting their relocation in the new stadium. The building of the stadium started in the spring of 1959.

**MAN ON A TIGHTROPE**—The final step to be taken was to give the old and the new a final coat of gray paint.



**THE FINISHED PRODUCT**—Beaver Stadium with 44,000 permanent seats and 2500 bleacher seats stands ready for its inauguration today at the Boston U. game. This is the first of four home games in the stadium. —Photo Courtesy of University Public Information