



Penn State vs. Boston U.



Beaver Stadium

September 17, 1960

Injury Riddled Nittanies Open New Era in State Grid History

By SANDY PADWE
Sports Editor

Penn State and Boston University will open the 1960 football season and a new chapter in Lion grid history this afternoon at 1:30 in towering Beaver Stadium.

Today's game is the first to be played in the new stadium which replaces Beaver Field, the scene of some of the nation's most thrilling battles during the last half century.

Penn State comes into the opener hobbled by injuries to four key players while the Terriers from Boston are in excellent shape thanks to an ultimatum handed out by coach Steve Sinko last spring.

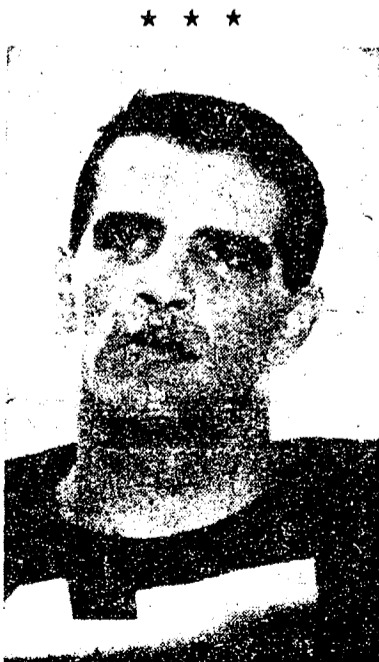
"We told the boys to get back here in good shape," Sinko said, "because we couldn't waste any time getting ready for our first two against Penn State and Syracuse."

"The boys had to undergo an exercise test the first day of practice. They all passed and now they're in excellent condition."

"We're in good shape, too—the ones that are healthy that is," snapped Rip Engle after someone asked him the same question.

Engle's Liberty Bowl champions will be minus some of their top stars this afternoon.

All-American halfback can-



EDDIE CAYE
... starts today

didate Roger Kochman underwent a knee operation Thursday at Geisinger Memorial Hospital in Danville, Pa., and will be lost to the team for the rest of the year.

Kochman, a great breakthrough threat, will be replaced by Eddie Caye, who was a bright prospect two years ago until knee in-

juries threatened to end his career.

The road back hasn't been easy for the crew-cut senior from Pittsburgh, Pa., but if he returns to the form he flashed in the past it will help Engle solve some of his problems.

The Lion end corps, ranked as one of the strongest in the country before the season, will be minus two starters in addition to captain Henry Oppermann who will probably only see spot duty.

A knee injury has sidelined John Bozick and an ankle injury Wednesday put Bob Mifflinger on the shelf.

Oppermann is still recovering from a summer knee operation and Engle hopes to keep him on the bench as much as possible today.

The injury list doesn't end with Oppermann. Wayne Berfield, who ran back an intercepted pass 98 yards against these same Terriers two years ago as a sophomore, will be out of the lineup with a sprained knee. He was running at the number one left guard slot until he was injured.

With so many injuries, the Lion starting lineup reads like this: Jim Schwab and Dave Alexander at ends.

Stew Barber and Jim Smith at tackle, Bill Popp and Dick Wilson at guard, and Jay Huffman at center.

Galen Hall will be the first. (Continued on page fourteen)

State-B.U. Lineups

STARTING LINEUP

NO.	WT.	PENN STATE	Pos.	BOSTON	WT.	NO.
(81)	199	Dave Alexander	LE	Ron Shiesley	185	(81)
(71)	225	Stew Barber	LT	Bob Minihane	228	(75)
(60)	209	Dick Wilson	LG	John Meschino	207	(67)
(51)	205	Jay Huffman	C	Jack Stephans	205	(55)
(64)	205	Bill Popp	RG	Bill DiLorenzo	220	(66)
(74)	230	Jim Smith	RT	Pete Perreault	235	(78)
(88)	205	Jim Schwab	RE	Dave Viti	225	(85)
(25)	185	Galen Hall	QB	Jack Farland	185	(13)
(15)	182	Ed Caye	LH	Dick Desmarais	180	(42)
(14)	182	Jim Kerr	RH	Hugh O'Flynn	195	(43)
(45)	196	Sam Sobczak	FB	Jim Luker	185	(27)

TIME: 1:30 p.m.

PLACE: Beaver Stadium (capacity—44,000); (expected crowd—20,000).

SERIES: Penn State holds 6-0-0 edge.

NEXT OPPONENTS: Missouri at Penn State, Oct. 1; BU at Syracuse, Sept. 24.

STARTING LINE AVERAGES: Penn State (211); Boston (215).

STARTING BACKFIELD AVERAGES: Penn State (186); Boston (186).

ALTERNATE UNITS

Penn State—Oppermann (89), Truitt (82), Sieminski (77), Farkas (76), Blasenstein (62), Robinson (67), Saul (52), Hoak (23), Pae (11), Gursky (43), Hayes (34).

Boston U.—DeNitto (80), Urban (89), Handy (76), Piccolo (63), Turkalo, (62), Josephs (68), Russo (51), Squarica (16), Stonkus (31), Johnson (35), Kielty (25) or Meadows (28).