

ASEE Gives Holderman James H. McGraw Award

Kenneth L. Holderman, coordinator of Commonwealth Campuses at the University, Tuesday received the 1960 James H. McGraw Award for outstanding contributions to technical institute education.

The American Society for Engineering Education cited Mr. Holderman for "his devoted, intelligent, and dynamic service to technical institute education" and "for his penetrating and articulate writing and speaking" on its behalf.

The award was presented before more than 300 engineering educators during the annual dinner of ASEE's Technical Institute Division at the national convention of the American Society for Engineering Education on the Purdue campus at Lafayette, Ind.

Holderman, a native of Pittsburgh, was graduated from Penn State in architecture in 1931. His academic career began in 1941, when he joined the Department of Engineering Extension at Penn State after nine years of design and engineering work in California.

Shortly after World War II, Holderman became director of the Department of Engineering Extension. He later became assistant dean of the College of Engineering and Architecture; and assumed his present position in 1959.

Active as a leader of ASEE's Technical Institute Division for many years, Holderman served as a member of the working group on technical supporting personnel of the President's Committee on



HOLDERMAN

Scientists and Engineers, and has been associated with the Engineering Extension section of the American Association of Land-Grant Colleges and State Universities.

The James H. McGraw Award is a \$500 prize sponsored by the McGraw-Hill Book Company, Inc., and is administered by ASEE's Technical Institute Division. It was presented to Holderman by Dr. B. Richard Teare, dean of engineering at Carnegie Institute of Technology, who is president of ASEE.

Review--

(Continued from page one) the role of the gleeful child. But, the final, lasting effect of this spoiled child from outer space is one of great enjoyment and hilarious fun.

Bishop, as the persecuted, spied-upon general, gives solid support and takes the lead in many scenes. His characterization has just the proper amount of whimsy and he blunders so beautifully.

Watching Bishop loosen himself up with a few "snorts" as the world stands on the brink of war, or describing the innovations he invented for the laundry corps are two delights of the show.

While these two performers manage to carry the production handsomely, Patricia Thompson, as the giddy-dreamy, love-loving daughter of Kreton's hosts, is unconvincing.

Miss Thompson's role is one which should emit the aura of fun, but she doesn't seem to be enjoying herself.

As has been the trouble in several of her Players' productions on campus, Miss Thompson is too much the actress. When she says in the first act, "I'm shallow at Bryn Mawr," she is convincing for she is also shallow at Standing Stone.

Bob Milton as Roger Spelding, head of the family and blundering news analyst who once congratulated Thomas Dewey on his election to the presidency, lacks the dynamic personality Spelding should have. He has just too much of Mr. Milquetoast in him.

Mrs. Spelding is nicely played by Ann Driscoll. She blurts out her always inappropriate lines nearly and, as the role demands, just as she seems to think of them.

As the motel-ranting, love partner of the Speldings' daughter, David Frank gives an on-and-off performance. He shows through best when defending his priority with the whimsome miss.

Alessandro to Lead Grad Student Tour

Dr. Joseph Alessandro, associate professor of education, will direct a tour of South America this summer as part of his course on "Comparative Education."

It will be the second year that he has taken a group to Latin America. He has conducted similar tours to Europe and the Middle East in other years.

Fifteen graduate students are making the trip and will spend 45 days from July 7 to August 19 touring Guatemala, Panama, Columbia, Ecuador, Peru, Chile, Argentina, Uruguay, Brazil and Puerto Rico.

They will visit points of historic, geographic and cultural interest, confer with ministers of education and visit public schools.

This tour will differ from last year's in its scope and emphasis, Dr. Alessandro said. The educators will also take part in seminars with university faculty members and visit various sugar and coffee plantations to get first-hand information about the products of the various countries.

Dr. Paul Bixby, assistant dean of the College of Education, will accompany the group.

His trip is sponsored by the International Cooperation Administration, which works with the University in the Latin American project which brings South

American educators to Penn State to study.

Dr. Bixby plans to talk with some of the 60 Latin American educators who have studied under this program. He will try to determine how valuable their experiences at Penn State have been to them.

He will also observe the comparative education course itself, to decide whether a 3-year sequence of such classes, which might take students to Europe and the Far East as well as South America, would be a worthwhile addition to the curriculum at Penn State.

Rohrbeck to Retire After 36 Years Service

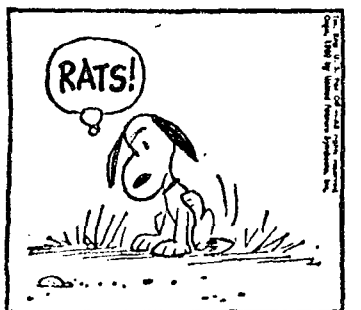
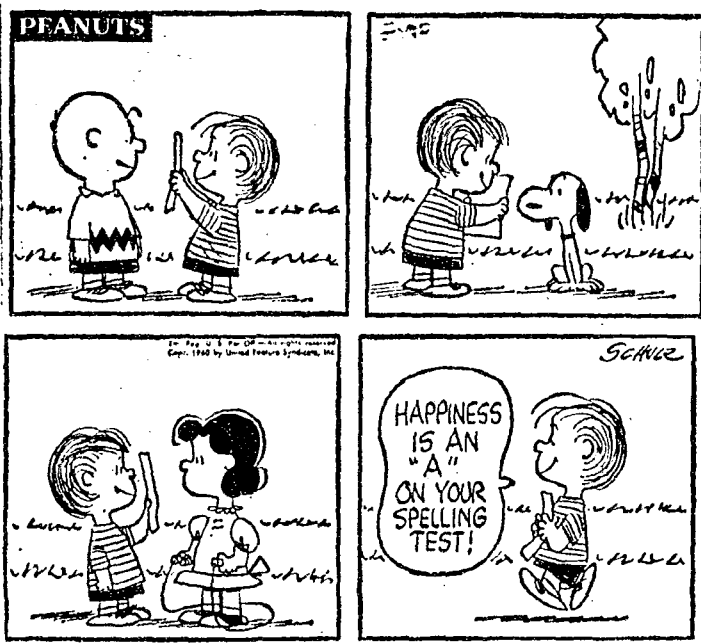
Edwin H. Rohrbeck, extension editor of the College of Agricultural Administration at the University for the past 36 years, will retire on June 30 as professor emeritus of agricultural extension.

Dennis to Speak At Los Angeles

Lawrence E. Dennis, vice president for academic affairs, will be a featured speaker when the Committee on Teaching in Colleges and Universities of the Association for Higher Education meets in Los Angeles at the end of the month.

He will participate in a panel "The Orientation of the New College Teacher."

Mr. Dennis, who served as chairman of the planning committee for the 15th National Conference on Higher Education, was recently elected to the executive committee of the Association for a three-year term.



What Do You Crave?

If your mouth is watering for a thick, juicy steak, the best place to go is the Boalsburg Steak House. And if spaghetti is what you crave, why not try some of our delicious Italian spaghetti? With your meal you can have your choice of beverages. Why not treat yourself to the finest?

Boalsburg Steak House

4 miles South of State College on Route 322

BOAL BARN PLAYHOUSE Phone HO 6-6615 for Reservations
Rt. 322 Boalsburg

"Charley's Aunt"
by Brandon Thomas

June 23, 24, 25 Curtain 8:30 P.M.
All Seats . . . \$1.75

TICKETS AVAILABLE AT GRIGGS & MUSIC ROOM



Graduate to an

underwood olivetti

\$88 plus tax

Give your graduate a complete portable typewriter . . . the new Underwood Olivetti Lettera 22.

The Lettera weighs but 8½ pounds, stands just 3 inches low, yet offers every feature that students as well as professional typists ask for—even tabulation, basket shift, spring steel keys, half spacing and unique automatic paragraph indentation.

Remarkably sturdy—and just as handy—the light, lifetime-lasting Lettera 22 makes a wonderful and practical gift for your favorite person.

KEELER'S . . .

THE UNIVERSITY BOOK STORE
Directly across from the East Campus Gate
AD 7-2112