

Reede Will Speak At Chapel Service

Dr. Arthur Reede, professor of economics, will be the speaker for the Protestant service of worship at 9 a.m. tomorrow in the Helen Eakin Eisenhower Chapel.

Music for the service will be provided by the Meditation Chapel Choir, under the direction of James Beach. The choir will sing the anthem "Tenebrae in E Flat" by Michael Haydn. The organist for the service will be Nancy Hadfield.

Reede received his bachelor of arts and his master of arts degrees from the University and his doctor of science degree from the University of Rome. He has directed research projects at Harvard and for the state of Pennsylvania in the field of economics.

At the University, he is president of the United Lutheran Men, chairman of the United Christian Association finance committee and a member of the UCA Board of Directors.

Masses for Roman Catholics will be said at 8, 9:30 and 11 a.m. and 4:30 p.m. at Our Lady of Victory Church and at 9 a.m. in Schwab Auditorium.

The Lutheran Student Association will present the last lecture in the series "From Adam to Atom" at 6:30 p.m. tomorrow at the student center. Dr. Hubert Frings, professor of zoology, will discuss the conflicts between the religious and scientific views on the origin of life.

A Lenten worship service and a play entitled "Pilates Dilemma" will be presented by the Westminster Fellowship at 6:20 p.m. tomorrow at the foundation.

The Emerson Society, Unitarian student group, will hold a program of folk music conducted by

Special Lenten-Easter Service Will Be Presented Tomorrow

A special Lenten - Easter service of music and lessons will be presented at 8 p.m. tomorrow in Schwab Auditorium.

Under the direction of Willa C. Taylor, the University Chapel Choir will provide the music for the service.

The choral program, featuring music by representative English composers, will include "Hosanna to the Son of David" by Thomas Weekles, "Ave verum corpus" by William Byrd, "Easter Motet" by Thomas Morley, "O Taste and See," "Te Deum" and "Is It Nothing to You?" by Ralph Vaughan Williams.

Sonja Brown, former member of the Chapel Choir, will be contralto soloist for Williams' "Is It Nothing to You?"

The responses for the day and the organ offertory "Confite-mini Domino" have been written especially for this service by George E. Ceiga, University organist.

John Henry Frizzell, chaplain emeritus of the University, will assist the Rev. Preston N. Williams, acting University chaplain, in the liturgy of the service.

Women's Debate Team Attends State Contest

The Women's Debate Team attended the State Debate Tournament held last weekend at Washington and Jefferson College in Washington, Pa.

The affirmative side of Nancy Schuffman and Judith Weiss won two contests and lost three. The negative side of Jacqueline Leavitt and Marjorie Kapelsohn also won two and lost three.

Miss Leavitt placed first in the extemporaneous contest. Miss Weiss was third in the oratory contest.

Samuel Bayard, associate professor of English, at 6:30 p.m. tomorrow in the Eisenhower Chapel.

Services for the Passover will be conducted at 10 a.m. on Tuesday and Wednesday at the Hillel Foundation.

The Baptist Student Movement will meet for Bible study at 8:30 a.m. tomorrow. Church services will be at 9:30 and 10:50 a.m. The fellowship will meet for dinner at 5:30 p.m. which will be followed by a play entitled "The Terrible Meek."

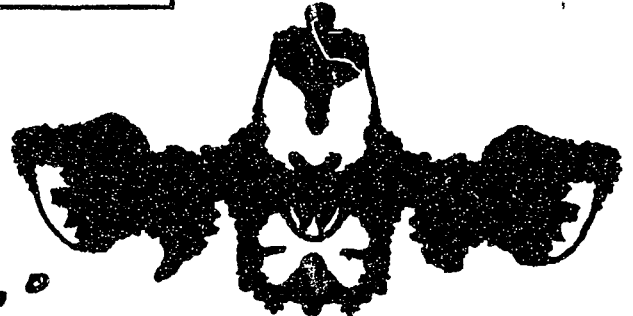
The St. John's Evangelical United Brethren Student Fellowship will hold a dinner at 5 p.m. tomorrow at the student center. The program following the dinner will present Mohammed Ali Khan, a graduate student from Pakistan, who will give a talk on "Islam."

CAMP COUNSELOR OPENINGS
UNDERGRADUATE STUDENTS
(Minimum age 19 & completion of at least 1 year of college)
GRADUATE STUDENTS and FACULTY MEMBERS
THE ASSOCIATION OF PRIVATE CAMPS.
 . . . comprising 350 outstanding Boys, Girls, Brother-Sister and Co-Ed Camps, located throughout the New England, Middle Atlantic States and Canada.
 . . . INVITES YOUR INQUIRIES concerning summer employment as Counselors, Instructors or Administrators.
 . . . POSITIONS in children's camps, in all areas of activities, are available.
 Write, Phone, or Call in Person
Association of Private Camps - Dept. C
 55 West 42nd Street, OX 5-2656, New York 36, N. Y.

PREFABRICATED SUBMARINES
 Constructed by
Morrell's
 25% discount on ten or more delivered from 9-12 AD 8-8381

JUST HOW FAR OUT ARE YOU?

TEST YOURSELF!



If you see an elephant in this ink blot, your problem is you've never met one. Because an elephant doesn't look anything like this blot. Like some of the new cars, he has a trunk in the front. He also has more in the way of ears than anyone really needs.

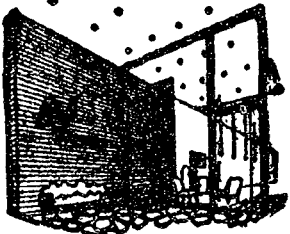
We know about elephants because we have seen them in the movies. We know about L&M filter cigarettes because we make them.

You can learn a lot about elephants by simply looking at them, but you have to smoke an L&M to know that L&M has found the secret that unlocks flavor in a filter cigarette. And to know that in today's L&M, with its patented Miracle Tip, fine tobaccos can be blended not to suit a filter but to suit your taste.

We suggest you go to the movies and look at some elephants. And try an L&M.



Reach for flavor . . . Reach for L&M



Through the Looking Glass with Gabbi

Only three more days until Easter vacation. Did you think it would never arrive? Many of you will come back to campus sporting the beautiful tans which you got in Florida and Bermuda. (Unfortunately I must limit my sunning to the back yard this year, but that's the price of fame.)

Send Easter Greetings . . .

to mom and dad. Say "Thanks for the check. I am having a blast here" I'm sure they will appreciate your consideration. Seriously, drop in and select Easter cards from the handy display case right inside Ethel's door. We say it for you.

Attractive Accessories . . .

are a must for your new Easter outfit. Ethel invites you to see her selection of attractive spring and summer handbags by JANA. Handbags come in a variety of styles, shades and materials. If you can't find the handbag to accent your spring outfit at Ethel's you'd better give up.

Be Prepared . . .

for unexpected showers. (We all know that State College weather is very dependable, and if it's dependable in the spring . . . monsoon weather.) Why tramp around campus in a soggy trench coat (after a while they absorb water you know) when you can stay nice and dry under an umbrella from Ethel Meserve's. Drop in and inspect our fine umbrellas today. Don't be caught in the showers.

Have a nice vacation, Gabbi

Ethel Meserve