

# Rochow to Give Pittsburgh Panhel Lecture Series

Dr. Eugene G. Rochow, professor of chemistry at Harvard University, has been named the 1960 Priestley Lecturer at the University.

He will deliver the 34th annual Priestley Lecture Series during the week of April 25 on the general subject, "Unnatural Products: New and Useful Materials from Silicon"

Rochow has served on the Harvard faculty since 1948 and has been engaged in research on organosilicon compounds, silicates, and related compounds of germanium and tin

The 34th annual Priestley Lectures are dedicated to the late Dr. Wheeler P. Davey who inaugurated the series in 1926 as a memorial to Joseph Priestley.

# Pittsburgh Panhel Offers Student Aid

The Pittsburgh Panhellenic Association is offering scholarships to sophomore and junior women who are residents of the Pittsburgh area, but who attend colleges outside the city.

Applications may be obtained by writing to Mrs. R. J. Bailey, 18 E. Manila Ave., Pittsburgh 20, Pa. They will be due by April 22.

Last year the Panhellenic Association of Pittsburgh awarded two \$200 scholarships.

# Beeman Correction

It was erroneously reported in yesterday's Collegian that Francis L. Beeman was fined \$25 and costs for drinking intoxicating beverages while a minor. Beeman was not in any way involved in the liquor raid that was conducted by the State Liquor Control Board on March 18. The correct name was Leslie S. Beeman.

# Yeaton Evaluates Plays

Kelly Yeaton, associate professor of theatre arts, was a critic judge invited to criticize and evaluate the 21 plays presented at the 18th Delaware Play Festival at the University of Delaware.

# CLASSIFIEDS

**FOR SALE**

PRIVATE OWNER selling sharp 1953 DeSoto sedan; radio, heater, V-8, tip-toe shift. See to appreciate \$360. AD 7-2985

ELECTRIC STOVE for sale. Good condition. Call AD 8-1170.

ROYAL PORTABLE Typewriter, large size, almost brand new. Sensational opportunity. Mike AD 7-2196

REMINGTON QUIET-RITER, purchased September, \$65, cost \$126. Perfect condition Larry AD 8-0724.

ANY OR ALL the classical LP's in a collection of nearly 200. Virtually all composers and labels. Recommended by Holden Caulfield. It really is. \$2 each Mike AD 7-2196, 137 N Athreton St. across from Grehound Station (third floor).

INCREDIBLE 8-PIECE Hi-Fi set. Will cost you a lot of money but will hasten your attainment of Nirvana. Mike AD 7-2196.

BEAUTIFUL FUNCTIONAL bicycle. Absence of fenders gives sleek appearance, front basket useful for carrying money, jewels etc. after a heist. \$16. A buy at half the price Mike AD 7-2196.

A \$26 PAIR of British Walker Cordovans, worn only twice, size 11D; comfortable as last-iron underwear but nice looking—\$10. Mike AD 7-2196.

NEED TROPHIES? You name it—I have it. Plain or engraved. Big discounts. Quick service Phone AD 7-7861 after 6. Catalogs available. Sam Troutman's Trophy-Novelty Shop

V. W. SUPERCHARGER, complete \$50.00. Call Karl Lederer AD 7-2661.

1953 MG-TD \$995. 1952 Dodge convert. \$195. 1954 Buick Special \$495. Clark Motor Company, 120 S. Pugh Street.

TUXEDO in good condition, size 38. Call Fred AD 8-9086.

ONE BEDROOM Trailer, good condition. Porch with roof, utility shed. Thermostatically controlled heat. August graduate. Phone AD 8-0088.

LUGGAGE RACK, radio grill bar for MGA. Call EL 5-8677.

# SUMMER GOLD!

It is not too early to start looking. Applications being taken now for summer sales jobs

**\$110.00 PER WEEK**

Car Needed, No Experience Necessary. This is a National Organization with Limited Openings . . . SO ACT NOW!

Write Nutri-Seal Co., R.D. 4, Norristown, Pa. stating qualifications and your summer address

The basement of the Corner Room is famous . . .

It contains

**Catherman's Barber Shop**

best cuts of hair you can find  
Daily 8-5:30; Saturday, 9-12

ENGINEERS • SCIENTISTS

# BRIDGING THE GAP

...from components, equipments, and subsystems to fully integrated, large-scale systems

Air defense missiles, unmanned interceptors, manned interceptors, early warning aircraft, long-range radar, gap filler radar, Texas towers, vast communication nets, high-speed computers and advanced information display devices are a few of the integral parts in an air defense system. Each of these has its individual operational characteristics and it is the responsibility of The MITRE Corporation to provide the basic system engineering and design necessary to integrate these many diverse and complex parts into a mutually compatible, fully-integrated air defense system.

Formed under sponsorship of the Massachusetts Institute of Technology, MITRE employs the skills of engineers, mathematicians, physicists and psychologists on large-scale system projects ranging from design through prototype engineering and subsystem development to test and evaluation of the total on-line system. The growing scope of MITRE's technological effort affords the opportunity to establish a rewarding professional career in one of these areas of long-term importance:

- Component Research • Advanced System Design
- System Test and Evaluation • Computer Programming
- Human Engineering • Radar Systems and Techniques
- Subsystem Development • Communications
  - Air Traffic Control Systems

# CAMPUS INTERVIEWS

Friday, April 8

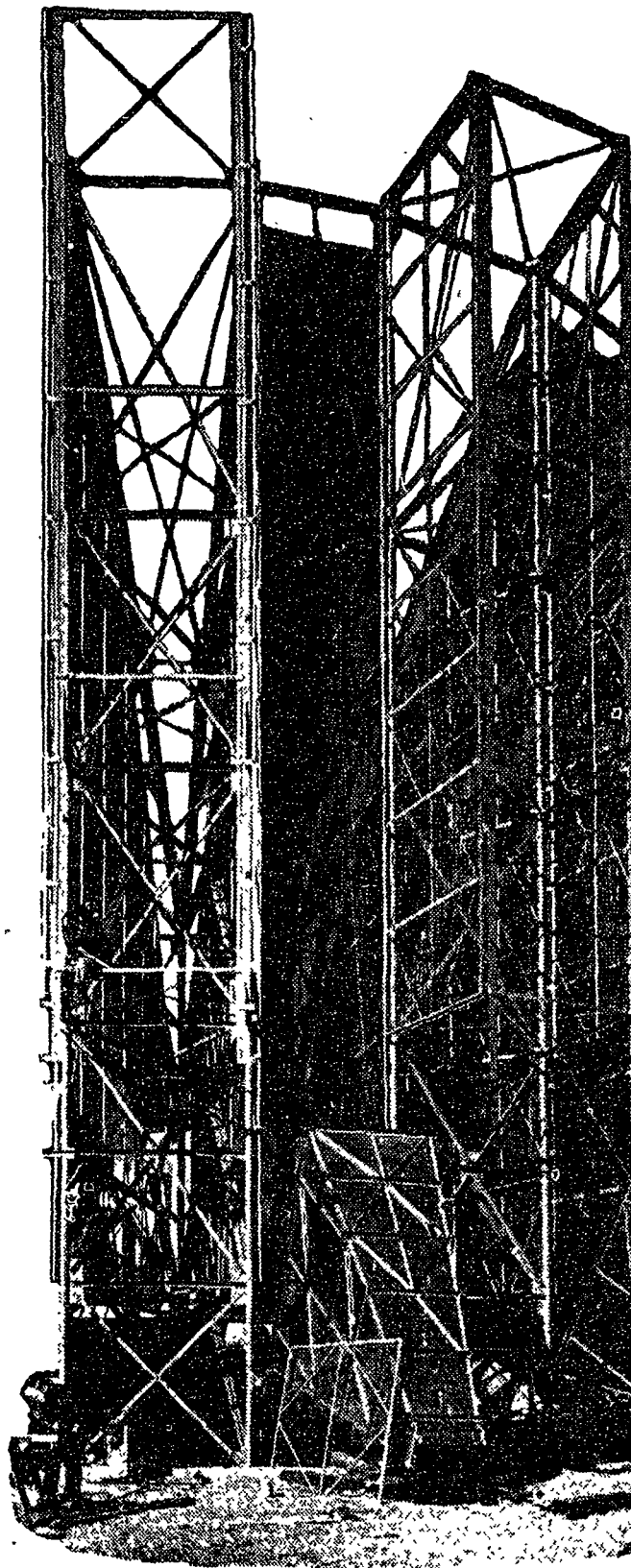
Please Contact

Your Placement Director for Appointment

THE MITRE CORPORATION

244 WOOD STREET — LEXINGTON 73, MASSACHUSETTS

A brochure more fully describing MITRE and its activities is available upon request.



**FOR SALE**

SILVERTONE HI-FI Portable Phonograph, 3-speed, automatic changer. Good condition. Call UN 5-6769.

1953 MG-TD. Contact Lanson Cities Service Station, Route 322 North. Call AD 8-8208.

HI FIDELITY. Portable RCA product, 8-inch coaxial speaker. Sacrifice \$35. Larry AD 8-0724.

LADIES' PRECISION figure skates, wooden wheels, excellent condition. Call UN 5-5435 or AD 7-4067.

1957 TRAILER, 2 bedrooms, bath, automatic washer, oil heat, refrigerator. \$2900. AD 8-0381.

1955 FORD convertible, excellent condition, new top. Will accept best offer. AD 8-1031.

**LOST**

IN REC HALL, wallet, Monday night. Keep money. Call John AD 8-8161. I need the papers.

TAN RAINCOAT with brown lining, Hur's label—taken from M S, Wed. 10 a.m. Call Bob UN 5-7428.

WILL THE guy who stole my girl, Margie, please return her to me! Steve Sussonn.

CIVIL ENGINEERING book lost in front of Home Ec., last seen underneath tree. Call George UN 5-6247.

TAN RIBBED raincoat, brown corduroy collar, paisley print lining—outside 421 Boucke, March 29. Reward. Call May UN 5-4589.

BROWN LEATHER wallet containing \$10.00. If found turn in at HUB desk and keep money.

WOULD THE person who picked up grey car coat from Rinaldo's Barber Shop Mon. at 9:00 a.m. please contact Bob Ogden AD 8-9084.

DICTIONARY LOST in 817 Boucke March 24. Name engraved on front cover. Call Jim UN 5-4056.

WHITE FACED black leather banded watch in Rec Hall locker room. Call Walt UN 5-7487, thank you.

FRATERNITY PIN—somewhere between Bill's and Phi Gamma Delta. Call Don Book AD 7-4957.

**FOUND**

CLASS RING, Oakmont High School. Identify. Call AD 7-3274.

**FOR RENT**

HALF OF two-bedroom apartment with large kitchen and bathroom. All the comforts of home and none of the sorrows. \$85 a month. Mike AD 7-2196.

ROOM TO rent. Single room for male student one block from campus. AD 7-3252.

FOUR ROOM apartment, very reasonable. Call UN 5-6634.

A FIVE ROOM apartment with private bath, suitable for four students or a family. Will rent for the summer. UN 5-4493 after 6.

COMFORTABLE MODERATE rate accommodations with private bath or running water. Colonial Hotel, 123 W. Nittany Ave., State College. AD 7-4860 or AD 7-7767.

**WANTED**

WORKING GIRL would like single room in private home or share apartment with girl that has same. Call HO 6-6619 after 6.00 p.m.

WANTED USED filing cabinet, one large drawer. UN 5-6666.

WAITER FOR fraternity. Call AD 8-1397 or AD 7-4924, ask for caterer.

RIDE FROM Norristown, Phila., or vicinity early April 20. Call Jan UN 5-6057 before April 8.

FLORIDA RIDERS to Fort Lauderdale, Easter. Call AD 8-1917 after 8:00.

ONE POTENT male hamster to meet lusty female. Object: matrimony. Applications accepted at AD 8-1924, ask for Brad.

WAITERS NEEDED at Alpha Tau Omega. Phone AD 7-7683.

FLORIDA RIDERS wanted to Fort Lauderdale for Easter vacation. Call Lois UN 5-5628.

RIDERS TO Ft. Lauderdale over Easter vacation. Call Bud Albright or Ken Sullivan AD 8-6821.

RIDE TO State College from Pittsburgh April 1. Contact Joan UN 5-4213.

DO YOU CONSIDER yourself a good SOFTBALL PITCHER? We need one for the State College summer league. Call or contact Bostonian Limited, as soon as possible, 106 S. Allen or AD 8-8655.

TYPING OF all kinds by experienced technical typist. Reasonable rates. Call AD 8-8638.

RIDERS—from Monroeville and vicinity to State and return for I.F.C. weekend. Call George AD 8-1892.

R.N. FOR dental office to start immediately. Call AD 8-2480 for appointment.

WANTED—fraternity kitchen help. Call AD 7-2044 ask for caterer.

**MISCELLANEOUS**

STUDENTS INTERESTED in part-time employment must keep in close contact with The Student Employment Office, 312 Old Main. There are a number of openings now in fraternities for waiters and dishwashers.

I'M ON my way to the matinee of "Kiss Me Kate" 2 p.m., April 21. Schwab Auditorium. IFC-Panhel weekend.

YOU'LL MISS the boat if you don't go on "Foreign Assignment," a remarkable European trip led by Robert Pockras, School of Journalism. UN 5-6013.

MEET ME at the Pow Wow, Beaver Avenue.

JAZZ COMBO available the weekend of April 1-2. Call Stan Barton AD 8-1858.

LION'S DEN invites you to stop in for their delicious noon meal. Ham Bar-B-Que, Roast Turkey, and a daily special. Low prices and quick service. Campus Shopping Center. TODAY!

ENROLL NOW for ballroom dancing, tap, toe or acrobatic lessons. Professional School of Dance. AD 8-1078.

TENNIS FANS—expert restringing and repairs. Large selection of nylon and gut. Prompt service. Guaranteed satisfaction. University Tennis Service, 314 E. Beaver Ave.

ENROLL NOW for ballroom dancing, tap, toe or acrobatic lessons. Professional School of Dance. AD 8-1078.