

Students to Choose 'Snarf' Next Week

The title of Professor Snarf, Penn State's "best loved professor", will be given to one of the ten most liked teachers on campus next week.

From the list of the favorite from each college, the students will chose by penny-vote the most typical and well-

Judicial Board Discusses New Sign-Out Hour

WSGA Senate discussed — but took no action — on a Judicial recommendation that the signout hour be changed to 10 p.m. on weekdays. No vote was taken on the recommendation because a quorum was not present at the meeting last night.

Sandra Slush, Judicial chairman, also reminded Senate members that all women will have two 2 a.m. permissions this weekend in accordance with the new women's regulations.

A recommendation to assign a penalty to women who sign in and then do not have their dates out of the dormitories by the closing time was also discussed. It was suggested that the total time that her date remains in the residence hall after closing be added to the woman's late minutes. It was decided that Judicial will set a penalty for this offense.

In other business, the Mother's Day reception planned by WSGA will be held on May 7 in the Hetzel Union ballroom or on the patio, depending on the weather.

Margaret McPherson, new president of WSGA, gave a brief report on the International Association of Women Students Convention which five representatives attended last week at Kent State University.

TIM Will Sponsor--

(continued from page one) annual Professor Snarf award will be presented.

There will also be a 10-minute stage show every 20 minutes on the ballroom stage. The Esquires, a singing group, will be the featured entertainment.

At 11:15 p.m. souvenir prizes from Las Vegas night clubs such as key chains and roulette wheels, will be given to students holding winning tickets.

Participants Announced For Parade

Groups participating in the Spring Week float parade have been announced by parade chairman Sharon Hoffman.

It is not necessary for participants to enter the same division for the carnival and the float parade, nor need they enter both events. The three categories of the theme "Once Upon a Time..." are nursery rhymes, legends and children's stories.

The 12 groups participating in the nursery rhymes are: Acacia-Atherton, Chi Phi - Alpha Xi Delta, Phi Epsilon Pi - Chi Lambda, Phi Kappa Sigma - Kappa Delta, Phi Kappa Theta - Theta Phi Alpha, Phi Sigma Delta - Alpha Epsilon Phi, Sigma Chi - third floor Cross, Tau Kappa Epsilon - Zeta Tau Alpha, Tau Phi Delta - Beta Sigma Omicron, Theta Delta Chi - Sigma Sigma Sigma, Nittany Area - Thompson and Alpha Gamma Rho - Gamma Phi Beta.

Thirteen groups will be participating in the category of legends. They are: Alpha Epsilon Pi - Omega Psi Phi, Alpha Sigma Phi - Kappa Kappa Gamma, Beta Sigma Rho - Alpha Chi Omega, Delta Upsilon, Kappa Delta Rho - Alpha Gamma Delta, Kappa Sigma - Stephens, Lambda Chi Alpha - Sigma Delta Tau, Phi Kappa Tau - Alpha Phi, Phi Mu Delta, Phi Sigma Kappa - Alpha Delta Pi, Theta Xi - Grange, Zeta Beta Tau - McKee and Delta Chi - Lyons and Haller.

The 11 groups using children's stories for their float theme are: Beta Theta Pi - Chi Omega, Delta Tau Delta - Kappa Alpha Theta, Delta Sigma Phi - Delta Delta Delta, Phi Kappa Psi - Alpha Omicron Pi, Pi Kappa Alpha - Delta Zeta, Pi Lambda Phi - Hoyt, Sigma Alpha Epsilon - Delta Gamma, Sigma Alpha Mu - Phi Sigma Sigma, Sigma Pi - Pi Beta Phi, Theta Chi - Phi Mu and West Halls.

liked professor in the third annual Professor Snarf contest sponsored by the World University Service during the week April 3 to 9.

The candidates, chosen by each college council, and college they represent are: Dr. Lawrence Perez, assistant dean of Engineering and Architecture, Engineering and Architecture; Dr. Laurence H. Laitman, assistant professor of geomorphology, Mineral Industries.

Dr. Clyde G. Corle, associate professor of elementary education, Education; Gene Wettstone, professor of physical education, Physical Education, and Martha Adams, assistant professor of physical education, Physical Education; Dr. Mary Willard, professor of chemistry, Chemistry and Physics; Dr. Frank J. Cone, professor of bacteriology, Agriculture; Dr. Kent Forster, professor of European history, Liberal Arts; Clifford A. Nelson, associate professor of accounting, Business Administration; Dr. Marjorie East, head of home economics education, Home Economics.

Containers with the picture of each professor will be placed in the HUB and in the lobby of each college building. Members of Gamma Sigma Sigma, women's service sorority, will assist the councils and WUS with the voting.

Professor Snarf will be announced at the TIM-Leonides Las Vegas Night April 9. At that time he will be presented with an engraved gold cup.

Chairman of the contest is Carmella La Spada, senior in psychology from Chester.

The WUS Committee for the contest, advised by Rev. Preston Williams, is: Kathryn Hammel, Natalie Lucenko, Judy Gordon, Charles Gaston, Nancy Hughes, Nancy Banta, Linda Ackley, Mona Cooper, Donna Doebler, Darlene Anderson, Paris Pacchione and Jacob Dentu.

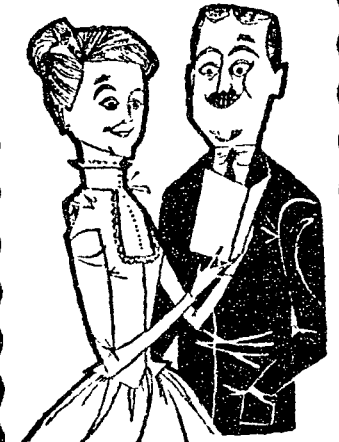
Price Correction
Bermudas are \$7.95
Not \$1.95 as advertised
Mr. Charles III

Collegian Business Staff Meets Tonight

This includes all — new and old — members of all staffs of The Daily Collegian Business Staff.

Tonight at 7:30
In Room 2, Carnegie

GIBSON Easter Cards



Remember family friends across the miles. You'll find a card for each in our selection.

KEELER'S
THE UNIVERSITY BOOKSTORE
8:45 a.m. to 9 p.m. Monday
8:45 a.m. to 5:30 p.m. Tuesday thru Saturday
AD 7-2112



On big weekends smart girls wear shoes from **The Juliet Room** 109 S. Allen

Deadline Set For Submitting NDEA Forms

Applications for National Defense Education Act student loans for the 1960-61 academic year may be filed from April 15 to June 6 in the dean of men's office, 109 Old Main or in the dean of women's office, 105 Old Main.

Personal interviews are necessary and should be arranged before a student leaves campus at the end of the semester.

To be eligible for a loan, a student must have a 2.0 All-University average and must also achieve a 2.0 All-University average at the end of the spring semester.

Applicants must present evidence of financial need and preference will be given to superior students who are planning to teach in either elementary or secondary schools or whose academic background indicates a superior capacity for preparation in science, mathematics, engineering or modern foreign language.

WSGA Judicial Fills Positions

New members of the Women's Student Government Association Judicial Board have been announced by Sandra Slush, board chairman.

The new sophomore representatives are Mary Sue Hersey and Jo Anne Mark; alternates, Linda Moritz, Patricia Baker, Mary Diamond and Francine Lembo.

Junior representatives are Patricia Dyer, Adriana Storm and Patricia Hagan; alternates, Susan Clement, Favenola Zalmon and Janice Auerbach.

Senior representatives are Diane Moritz, Joan Beidler and Carol Levin; alternates, Suzanne Barct, Mary Kay Stocker and Debora Urie.

In other action the Board voted to remind women students that they must have dates leave the residence halls by the sign-in hour or penalties will be imposed.

TIRED???
Let Collegian Classifieds WORK FOR YOU

The LOVED LOOK for 1960 is the Trend In Feminine Hairstyles See how it can look on you



VOGUE

In the Campus Shopping Center 463 E. College Ave. State College

Open Monday thru Saturday, 9-5:30; Tuesday and Thursday evenings 'til 9 p.m. AD 7-2286.

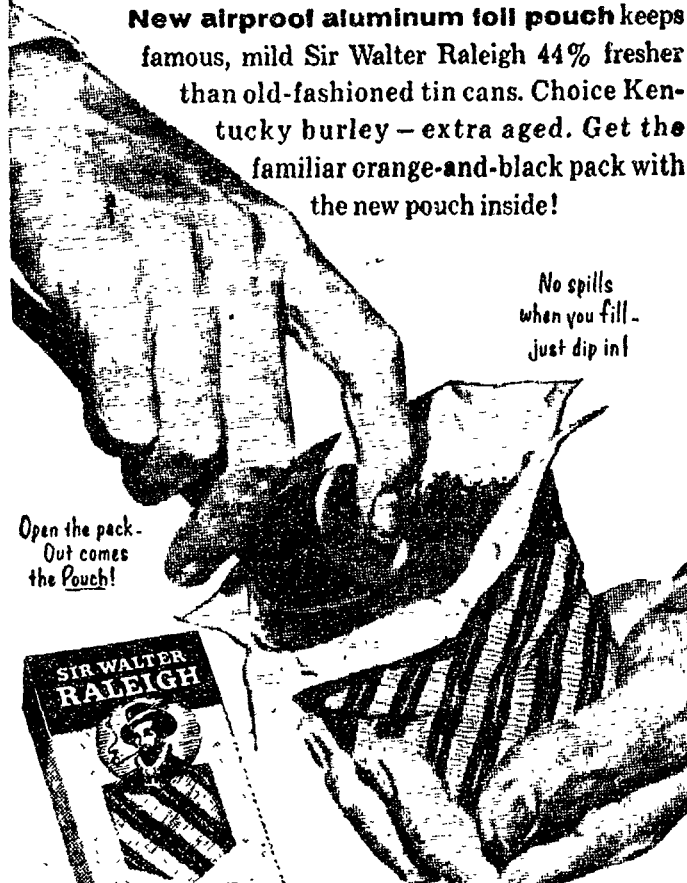
BEAUTY SALON

Now! **SIR WALTER RALEIGH** in a Pouch!

44% FRESHER!


Keeps Tobacco

New airproof aluminum foil pouch keeps famous, mild Sir Walter Raleigh 44% fresher than old-fashioned tin cans. Choice Kentucky burley — extra aged. Get the familiar orange-and-black pack with the new pouch inside!



No spills when you fill — just dip in!

Open the pack — Out comes the Pouch!



Yearproof — it's triple laminated. Really durable. ... won't spring a leak.

Carries flat in pocket. ... it bends with you.

Sooner or Later — Your Favorite Tobacco...

SIR WALTER RALEIGH

THESIS
MULTILITHING
FAST - ECONOMICAL
COMMERCIAL PRINTING
352 E. COLLEGE AD 6-6794

PERSONAL LOANS

CASH Advanced

\$25 to \$600

Centre Thrift

143 West Beaver Ave.