

**Weather Forecast:**  
Partly Cloudy,  
Rather Cold

# The Daily Collegian



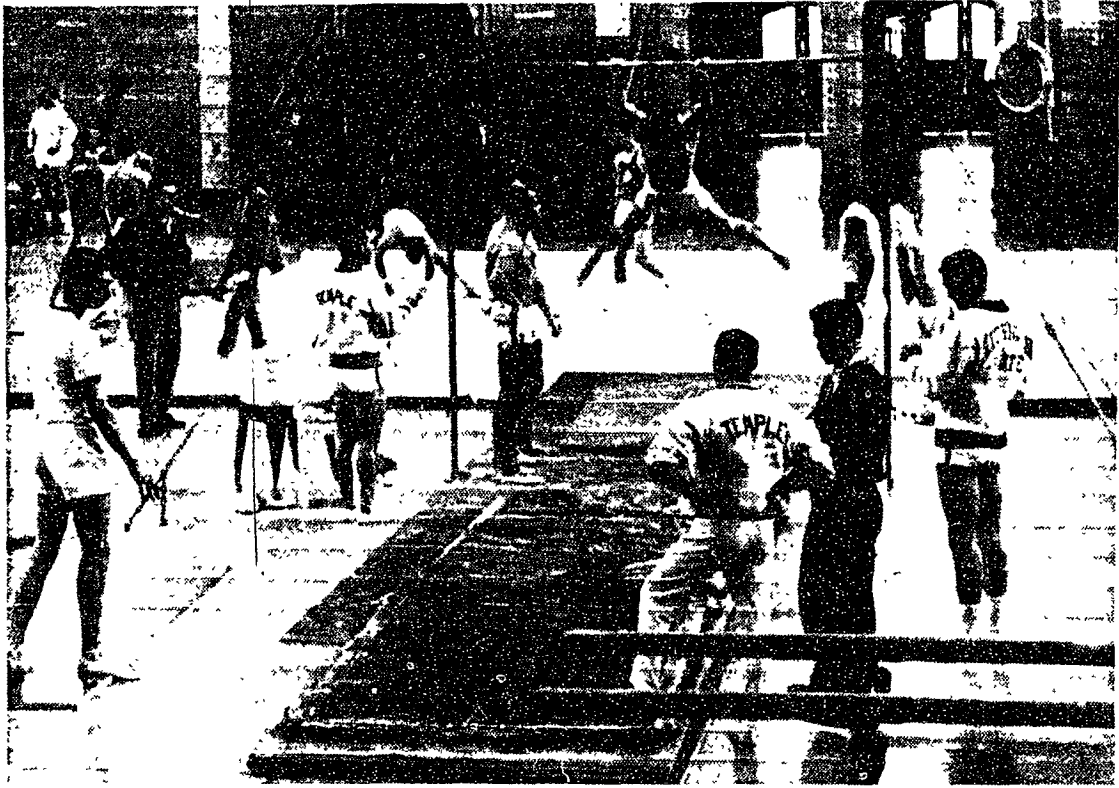
FOR A BETTER PENN STATE

**Stone Valley  
Project**  
See Page 4

VOL. 60, No. 105

STATE COLLEGE, PA., FRIDAY MORNING, MARCH 18, 1960

FIVE CENTS



—Collegian Photo by Marty Scherr

**WARM-UP SESSION**—Early arrivals for the NCAA gymnastics competition work out in Rec Hall. About 138 gymnasts will vie in preliminaries this afternoon and tonight for berths in the finals tomorrow night.

## Women Elect New Leaders

### 4 Fill Top Positions on WRA WSGA, Panhel and Leonides

Three presidents and one vice president were elected last night to head women's organizations for the next year.

Margaret McPherson, junior in liberal arts from New Park, ran unopposed for the office of president of the

**Women's Student Government Association.**

Roberta Hill, sophomore in elementary education from New Castle, defeated Ann Farley with a vote of 149 to 115 for the position as president of Leonides.

Janice Wanner, sophomore in home economics from Shoemakersville, was elected first vice president of Panhellenic Council and Cynthia Xanthopoulos, sophomore in secondary education from Pottstown, is the new second vice president. Both are members of Alpha Omicron Pi. They defeated Elizabeth Weihe for the offices.

Elizabeth Ingle, junior in arts and letters from Port Washington, N.Y., defeated Priscilla Wilko in the election for the president of the Women's Recreation Association with a vote of 642 to 313.

**WSGA**

Gage Peck, sophomore in arts and letters from Chevy Chase, Md., defeated Patricia Gardner, 556 and 431 for first vice president of WSGA.

Catherine Hersey, freshman in home economics from Easton, was elected second vice president of WSGA. She defeated Marcia Michalski by a vote of 543 to 450.

The new WSGA secretary is Susan First, junior in physical education from State College. She won by a vote of 595 to 397 over Susan Sherman.

Barbara Reese, sophomore in elementary education from Philadelphia, defeated Patricia Dyer for WSGA treasurer by a vote of 521 to 480.

New senior senators are Katharine Hughes, junior in arts and letters from Kingston (155), and Sheila Gallagher, junior in home economics from Washington, D.C. (150). They defeated Jean Demeyer (136) and Sandra Fosselman (106).

Elected junior senators were Linda Huston, sophomore in elementary education from Harrisburg (185) and Marjorie Ganter, sophomore in arts and letters from Bethel Park (160). They were opposed by Rebecca Gifford (110) and Judith Hannigan (108).

Susan Henderson, freshman in home economics from Springfield, Va. (245), and Elizabeth Skade, freshman in elementary education from Maplewood, N.J. (172) are the new sophomore senators. They defeated Lillian Leis (156) and Barbara Irwin (127)

(Continued on page six)

## Sr. Board To Consider Class Gift

Twenty-one suggestions have been made for the senior class gift.

The Senior Class Advisory Board will consider the suggestions and present some of them to the Executive Committee of the Board of Trustees for approval.

Seniors may vote on the final suggestions during Senior Week.

The gifts suggested are: a color television set for the HUB, student AM station, memorial fountain for the lawn of Old Main, tape recorders and dictaphones for speech analysis, improvement of junior year abroad plan, a booklet of information on recreational activities at Penn State, records and phonographs for the HUB and purchase of movies for the HUB.

Flag for Old Main, construction of an outside study area, improvement of Artists' Series and Lecture Series, library books, a University Book store, conversion of the Armory into a Penn State Museum and new lighting for the library reference room.

Sign and monument for Beaver Stadium, revolving art exhibit, improvement of Schwab or construction of new auditorium, retirement fund for professors and funds for a hockey rink.

## Tri-Delt First in Bridge

Delta Delta Delta sorority captured first place in the 4-week intramural bridge tournament sponsored by the Women's Recreation Association. Alpha Gamma Delta placed second and Kappa Kappa Gamma took third place.

## Last Day to File Conflicts

Today is the last day that students may file conflicts for final examinations. The scheduling office, basement Willard will be open from 8 a.m. to 5 p.m.

## Bus Service to Begin April 1; Line to Make 17 Trips Daily

By NICKI WOLFORD

The opening of the Suburban Express bus line which will service State College and the campus has been set for April 1.

"The service will begin on April Fool's Day but that's no joke," Lee Roy Toney, owner of the Toney Taxi Service, said yesterday. Toney said he received unofficial word

## Partly Cloudy Skies to Persist; Few Snow Flurries Due Today

Partly-cloudy and rather chilly weather is expected to persist for the next few days, but no very cold temperatures are due.

There is some threat of more snow by late tomorrow night or Sunday, but predicted amounts are uncertain.

The snow that fell Wednesday night and yesterday morning was officially measured at 2.8 inches, bringing the March snowfall total

## Housing May Permit Indies to Rent Suites

By ELAINE MIELE

Groups of independent women may be able to rent unused sorority suites from the Department of Housing in the future.

Two groups of women have already applied for rooms in suite areas in Simmons and McElwain Halls with the request that they be allowed to rent the unused suite.

Twelve sororities will be moving from Simmons and McElwain Halls to the new Pollock Halls in the fall.

Otto E. Mueller, director of housing, said that no final decision has been made on the request. Any group of independent women may request to live together and this request will probably be granted, he said.

The department is considering the proposal for renting unused suites to independent women and will announce the decision shortly, Mueller said.

It was originally planned to house four women in each of the suites, he said. This plan will be carried out if there are not enough rooms for women in the fall.

As rooms become available, the women would be moved

from the suites, Mueller said. The suites would then be used for study lounges for any women on the floor, he said.

Dean of Women Dorothy J. Lipp said yesterday she is in favor of allowing independent women to rent the suites.

"Two groups have already asked and there is no reason why others cannot," she said.

They would pay the same rent as the sororities do now she said, and a minimum of 25 girls would be allowed to apply.

The girls must present their rooming requests to housing in a block if they wish to live together, she said.

Sororities in Simmons and McElwain now pay \$850 rent a year.

The deadline for entering room applications for upperclasswomen is Monday.

that his franchise for the busline was granted Monday in Harrisburg.

The two buses will make 17 trips a day beginning at 7:23 a.m. and ending at 9:20 p.m.

On the inbound trips buses are scheduled to leave Woodycrest Rd. and move to the corner of Burrows and Pollock. They will move from Pollock down Burrows making a stop at Burrows and College Ave. and then on to Beaver.

From Beaver the buses will run to S. Allen Street and make a stop at the police stop on College Ave. to avoid congestion at the intersection of College Ave. and S. Allen St.

On the outbound trip, the buses will move from College Ave. to Shortlidge Rd. making stops at Pollock, Curtin and Park Ave. and completing the circuit at Park Forest Village.

The two buses will make two express runs during the morning. One bus will go through Park Forest Village and then directly to the campus and College Ave. The other bus will stop only at the main gate of Park Forest Village and then move through College Ave. (Continued on page six)

## 63 Killed as Plane Explodes in Flight

TELL CITY, Ind. (AP) — A Northwest Airlines turboprop exploded in the air yesterday, hurling wreckage and 63 bodies into southern Indiana's rugged Ohio River hills.

All aboard died. So much wreckage rained over a wide area that it was first believed two planes had collided.

However, the Federal Aviation Agency and the Indiana state police said all the pieces they could find were from one plane—Northwest's Flight No. 710 from Minneapolis to Miami, Fla.

A wing and two engines were found about five miles from the

main wreckage. The body of the plane rammed a huge hole into the earth.

A State Police spokesman said: "Shredded clothes were found all over the area. Our men have been unable to find any complete bodies."

Twenty state troopers searched the densely wooded hills along the Ohio River on foot. They tried using jeeps but made little progress. There are few roads in the area.

"Those hills are almost straight up and down, almost mountains," a trooper said. The scene was midway between Louisville, Ky., and Evansville, Ind., on the Kentucky-Indiana border.

Ed Laparle of Minneapolis was captain of the plane—the ninth to

go down in major air disasters throughout the world this year.

Officials said the widely scattered wreckage showed that the plane had exploded in flight.

Albert Harpe, a farmer saw the crash.

"I heard a plane going over in an easterly direction, and all at once I heard popping sounds," he said. "It sounded like shotgun shells or a little louder."

"I looked, and two parts were coming down. One was not over three-fourths of a mile from home."

State Police continued searching the woods as darkness fell. "Our big problem is lights," an officer said. "You can't describe how tough that country is in the dark."