



DOGPATCH, U.S.A. . . . Roberta Hill, sophomore in elementary education from New Castle, and Harold Sandstrom, Association of Independent Men's president, dance during last night's dance sponsored by Leonides and AIM in the HUB ballroom.

Plans for Construction Of Buildings Progress

Plans for construction of the new Education and Psychology Center Building and for the new buildings for research in horticulture are rapidly progressing.

Contractors will submit bids on March 9 for construction of the buildings to the General State Authority, which is in charge of the projects.

The Education and Psychology Center Building will face Curtin Rd. near the tennis courts, while the horticulture buildings will be constructed at two different locations.

In the area near Tyson Hall, two main horticulture structures will stretch out directly in front of the row of the eight green houses. In the center of the string of these greenhouses, a new one, 31 by 147 ft. will be constructed, with an enclosed corridor connecting it with other houses and with the main house.

On the Maude Miller farm, three structures, each 40 ft. square, with connecting corridors, will provide facilities for machinery repair and storage, seed cleaning and storage and a greenhouse workroom. In addition, a new greenhouse, 28 by 104 ft., will adjoin the triangle formed by the three connecting structures described above. They will combine to form a horticulture field service unit.

The Education and Psychology Center Building will be made up of two units, each two stories high, connected by 42-foot parallel enclosed bridges at the second story level. There will be parallel pavements at the ground level, with an attractive open court designed between the pavements.

In the new building, provisions are being made for facilities for studying ceramics, sculpture, jewelry, graphics, art education, music education and elementary and secondary science education.

A photography and television studio will be included in the plan of the second floor of the proposed building.

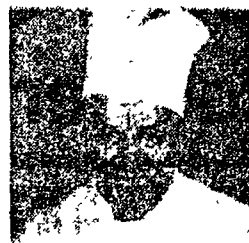
Of the horticulture buildings, one will provide laboratories for systematics, plant chemistry research, graduate research, plant breeding plant nutrition, several offices and other facilities.

Service Group to Induct New Pledges Monday

Alpha Phi Omega, national service fraternity, will induct pledges at a ceremony scheduled at 8 p.m. Monday in 213 Hetzel Union Building.

Any male student with previous scouting experience is eligible to pledge this semester.

CLASSIFIEDS—RESULTS
50c BUYS 17 WORDS



Your Host and Chef, Clarence Stephens, formerly with The Lincoln Hotel, Ocean City, N.J.

LOBSTER HOUSE
Daily, 5-9; Sunday, 12-8
TAXI RETURN GRATIS

Second Week of Rush Begins with 'Junctions'

Bermuda junction parties for Panhellenic Council formal spring rush will be held Monday and Tuesday nights as the second week of rushing begins.

The Bermuda junction parties are informal parties for the rushees and are held from 6:30 to 9 p.m. in the sorority suites.

Rushees may pick up their invitations for the parties until Monday morning at the Panhellenic post office in Atherton lounge. The rushees may accept only three invitations.

Chatter dates ended last night. Rushees were allowed to accept as many as six sororities' invita-

tions during the second round of chatter dates.

The counseling program for rushees will continue next week. Today's schedule runs from 9 a.m. to 1 p.m. Monday's hours are from 9 a.m. to 4 p.m. The counseling is given in Miss Mary Meousky's suite in Atherton Hall.

According to Mrs. Norma Mounian, assistant to the dean of women, several rushees have taken advantage of the counseling program.

She said most of their questions concern how to manage the cost of joining a sorority, and whether or not it is wise to drop out of rushing.

As of yesterday 60 women had dropped out of rushing.

At Schwab
March 3, 4
& 5

DETECTIVE
STORY

Sidney
Kingday

Tickets at HUB
Starting Monday

Repairs	Television
Car Radios	Radios
Phonographs	

television service center
at
State College TV
232 S. Allen St.

STATE NOW

Now: 1:56, 4:25, 6:54, 9:23
Sun.: 2:00, 4:29, 6:58, 9:29

THE BIGGEST STORY OF OUR TIME!

ON THE BEACH

CATHAUM
LAST TIMES TODAY
"7 THIEVES"

BEGINS 2 P.M. SUNDAY

with ANTHONY GAY
HAYWORTH - FRANCIOSA - YOUNG

The Story on Page One

CINEMASCOPE
STEREOPHONIC SOUND

NITTANY
Today — Opens 1:15 P.M.
"BATTLE STATIONS"

BEGINS 2 P.M. SUNDAY
"HOLDS DEEP INTEREST"

"THE MAN UPSTAIRS"

"SUSPENSEFUL THRILLER"

Daily News
58th St & 5th

oops . . . sorry!

although sutton place will be open sunday afternoon, the don krebs trio will not appear.

fall down our stairs anyway
sutton place
(where the western auto store meets the sidewalk)

La Galleria Presents

FREIDA LEE
and
THE DAVE ATKINSON QUARTET

THIS AFTERNOON ONLY
3-5

This is a special session for this week only. The regular sessions on Friday afternoon and night and Saturday night will, of course, be held as usual. Make it to all of them.

AR-EX **HYPO-ALLERGENIC**

WE HAVE THEM!

This word—which you may never have heard of nor seen—can be the KEY to your whole problem of SAFE beauty care for sensitive skin

It's a long word, with a formidable scientific sound (Hypo-al-ur-jenic). But you will soon hear it pronounced by women you know. You will hear it mentioned with a sense of excitement—a feeling of deliverance from a beauty problem... a tragic problem for many women. For millions of women—at least one in six—suffer allergy reactions to conventional cosmetics. Hypo-allergenic Cosmetics are those cosmetics which are formulated for the express purpose of reducing allergic reactions and irritations to a minimum by using ingredients which have a low index of sensitivity. Under the brand name, AR-EX, these cosmetics are available in scented and unscented form in our cosmetic department.

SYMPTOMS OF COSMETIC ALLERGY

Nasal Irritation with hay fever symptoms may be caused by conventional cosmetics or their perfume ingredients.

Inflamed Eyelids can result when eyelids are touched with fingertips on which conventional nail polish or remover has been used.

Cracked Swollen lips can be caused by a lipstick, especially one containing indelible dye.

Body Rashes may be traceable to allergy-causing substances in lotions, creams, soaps, body powder, nail polish or deodorant.

Chapped Hands may be caused by the use of conventional soaps, lotions or detergents.

Other members of the family, (even pets!) may suffer from allergy to a women's cosmetics. A change to AR-EX Hypo-Allergenic Cosmetics will help them.

GRIGGS PHARMACY
120 E. College Ave.
State College, Pa.

LISTEN
TONIGHT
at 10:05
to
BLAINE HARVEY
and
"GROOVOLGY 54"
WMAJ--1450
"Music for Your Listening Pleasure"