

Snow Belts Miss State College Area

By JOEL MYERS

Where's the snow?

With two snow-producing months already past and another almost one-third over, the residents of the Nittany Valley have yet to see an appreciable snowstorm this winter.

Four minor snowfalls have totaled just 4.3 inches, which is 8.7 inches below normal. The heaviest snow occurred during Christmas vacation and it measured 2.3 inches.

5 O'Clock to Give Chaplin Pantomime

A pantomime in Charlie Chaplin style will be presented by 5 O'Clock Theatre today in the Little Theatre, basement of Old Main.

"The Park," written by Russell Graves, relates the chase of a tramp, a drunk and a tough character after a girl Graves authored "Ephigenia at Aulis," which was produced last year.

The cast is David Rahe, Hank Moehling, Jon Wilder, Jerry Bialy and Vicky Stupp. Hisako Matsuura is the director and Donna Adams is stage manager.

Leonides OK's Plan—

(Continued from page one)

were suggested by Leonides when Miss Frank announced that Nittany Council had scheduled a bluebook dance for Feb. 13, the same night as the Town Independent Men - Leonides bluebook dance

Leonides had planned an afternoon jam session for which admission would be bluebooks for the TIM - Leonides file. A committee was appointed to work out a plan suitable to Leonides, TIM, and Nittany Council.

The lack of snow has been due in part to the mild temperatures that prevailed through most of December. However, this is not the only cause for the small amount of snow.

The main storm track has been across the northern border states and since the majority of precipitation falls to the north of a storm's path, this area has missed the bulk of the snow.

A secondary storm track has been located across the southeastern states. This one is too far south to give Central Pennsylvania any precipitation. It has deposited some snow in the southeastern counties of the Commonwealth, where between 8 and 15 inches fell last month.

If either of these storm tracks should shift, the snow belt would include the Nittany Valley. Until this happens, we'll have to be content with a brown rather than a white ground.

A total of 32 inches of snow fell in November and December in 1950. That winter ended with a total of 65 inches. Just two years ago 63 inches of snow fell to make that the seventh snowiest winter in State College weather records, which date back to 1887. The snowiest winter occurred in 1942 when 84.3 inches fell.

3 Scholarships League Offers

The National League of American Pen Women is currently offering three scholarships of \$1000 each in three fields of study to the outstanding student in each field.

One scholarship will be awarded to a student in fine arts, one in music composition, and one in creative literature. These scholarships are competitive and will be awarded by a jury chosen by the League. The \$1000 will be used for one year of advanced training at an institution selected by the student.

Only students who are members of the graduating class for the year 1959-1960 are eligible and candidates must be recommended by the college which should base its recommendation on the conspicuous creative talent of the student.

Applications for recommendation are available in the Dean of Women's Office in 105 Old Main. Applications must be made to the League on or before March 10.

IFC Rush Date Set—

(Continued from page one) Sigma Phi, Delta Tau Delta, and Theta Xi.

Fraternities must submit to the State College Borough by Jan. 18 forms showing that all food handlers have been x-rayed. Gentzler said failure to have food handlers x-rayed will result in a \$50 fine for each offense.

OUTING CLUB

.....

Tues., Jan. 12

Field & Stream meeting postponed until next semester

.....

Wed., Jan. 13

Rock Climbing to meet 7 p.m., 111 Boucke

.....

Thur., Jan 14

Ski meeting—final report on mid-semester—Red Houser Trip 7 p.m., 111 Boucke

.....

SKATERS are urged to sign up at HUB desk for skating instruction.

.....

OUTING CLUB

Players Present

IBSEN'S

John Gabriel Borkman

"By the man who made of the drama a really effective vehicle for the expression of modern ideas."

Center Stage

Tickets at HUB

LAST WEEK

For CLASSIFIEDS Call UN 5-2531



NOW PLAYING "THE WRECK OF THE MARY DEARE"

STARTS WEDNESDAY "LIBEL"

STARRING OLIVIA DeHAVILAND DIRK BOGARDE Feat. 1:30, 3:27, 5:24, 7:31, 9:38

NITTANY

NOW: 4:39, 6:18, 7:57, 9:36

The LOVERS

"ONE OF THE YEAR'S TEN BEST!"
starring Jeanne MOREAU - Jean Marc BORY

PENN STATE ENGINEER

COMING

OUT

TOMORROW

- The Sports Car Goes to College.
- Chemical Warfare.
- Female Engineers?
- The Moon.

ALL IN THE LIFE OF ONE WOMAN!

The Convent Novice Who Ran Away Into The World... Living As Gypsy - Singer - Dancer



...AND BECAUSE OF THE MIRACLE SHE CAME BACK-TO BECOME A NUN!!

Meet ROGER MOORE He's all man - and all exciting!



THE MIRACLE

A Mighty Spectacle... A Cast Of Thousands... Years In The Making! A WARNER BROS. PICTURE in TECHNICOLOR

• Begins Wednesday •

CATHAUM

FEATURE— 12:50, 3:00, 5:10, 7:20, 9:30

ENDS TODAY "Journey To The Center Of The Earth"

WHY DON'T YOU MAKE IT A

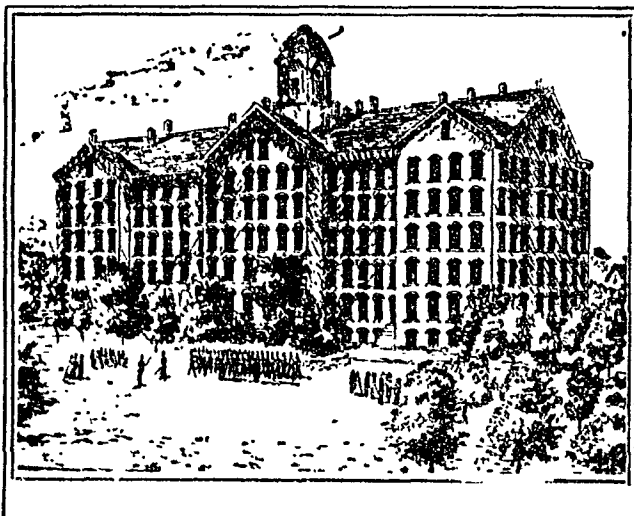
New Year Must And Come Out Today and Bowl With Us



CENTRE LANES

OPEN 9 A.M. to 1 A.M.

1600 N. ATHERTON AD 8-1431 STATE COLLEGE NEXT TO THE J&L BAR-B-QUE



According to the Spanish proverb, four persons are wanted to make a good salad: a spendthrift for oil, a miser for vinegar, a counsellor for salt, and a madman to stir all up...

—Abraham Hayward, The Art of Dining

THE TAVERN RESTAURANT