

Traffic Regulation Report to Be Given

By ZANDY SLOSSON

Second of a Series

The engineering committee of the State College Traffic Commission will report at 7:45 tonight on special traffic regulations which were put into effect on S. Atherton St. for a 60-day trial period.

The committee, chaired by Charles J. Smith, associate professor of civil engineering, will submit a definite proposal to the commission for their approval. Provided the plan is accepted by the commission, it will be submitted to the State College Borough Council for their final approval.

The committee was requested last spring to study the increased traffic flow in the S. Atherton St. area that resulted from the detour caused by the Benner Pike construction and continued residential growth in the southern area of the borough.

The overload of traffic and residential parking on S. Atherton St. made it difficult for emergency vehicles to get through, according to Smith.

During the summer a revised plan was approved by the commission following an informal investigation made by the committee in conjunction with Donald McNeil, traffic consultant to the borough from Pittsburgh.

The recommendations, which went into effect Sept. 1, included:

•Creation of two lanes of southbound traffic and a single lane of northbound traffic on S. Atherton St.

•Two-hour parking on the east of S. Atherton St. from Nittany Ave. to Highland Alley and the removal of all parking on the west side of S. Atherton St. from W. College Ave. to S. Allen St.

•Removal of parking in the metered area of W. Beaver Ave. from Creson Alley to S. Atherton St. and on the east side of S. Atherton St. from Beaver Ave. to Calder Alley from 7 to 9 p.m. and 4 to 6 p.m.

Since Sept. 1 the committee has studied the effect of the changes on the flow of traffic on adjacent streets and the speed of traffic on S. Atherton St.

A speed check was made by the Accident Prevention Division of the Pennsylvania Motor Truck Association two weeks ago.

They reported that 94 per cent of the 1634 vehicles that were clocked during the busiest hours were within the 35 mile-an-hour speed limit.

A psychology class taught by Dr. William Lepley, director of the psychology laboratory, clocked traffic on the street during non-rush hours. They found that of 323 vehicles they clocked, 258 exceeded the speed limit.

For CLASSIFIEDS Call UN 5-2531

WE CUT HAIR THAT THINKS FOR ITSELF

HOWARD SMITH BARBER SHOP 210 S. Allen St.

The Friendliest Clip Joint in Town

Van Pelt to Speak At Career Day

William Van Pelt, University graduate who is now managing college relations for the Armstrong Cork Company, will discuss industry at the evening session of the Liberal Arts Career Day to be held Dec. 10.

Afternoon workshops will include such subjects as social work, math and science, journalism advertising, radio and television, speech and speech therapy and a special feature for the girls-retailing.

The workshops will be conducted by the various departments in the College of Liberal Arts.

Prof-Grad Basketball Game

Graduate students and faculty members in speech will be featured in a pre-season basketball game at 3 p.m. today in Recreation Hall.

Student Tickets Remain For Pittsburgh Concert

Less than 700 student tickets and 500 non-student tickets remain for the Pittsburgh Symphony Concert to be held at 8 p.m. Sunday in Recreation Hall.

The program, eighth in the Artists Series, will include Symphony No. 4 in E flat Major ("Romantic"), Sonata Piano & Fichte for Two Instrumental Choirs by Gabriele and Symphony No. 8 in F Major, Opus 93, by Beethoven. William Steinberg will conduct the orchestra.

DeNovo Attends Meeting

Dr. John A. DeNovo, associate professor of history, participated last week in the Centennial Seminar on the History of the Petroleum Industry held at the Graduate School of Business Administration at Harvard.

The meeting was sponsored by scholars and by industry representatives.

Leadership Group Initiates 14 Men

Five members of the University staff and nine students were initiated into Omicron Delta Kappa, men's professional leadership and scholarship fraternity, last night.

Initiated were George L. Donovan, coordinator of student activities; Merritt Williamson, dean of the college of engineering and architecture; Albert E. Diem, vice president for business administration; Richard M. Colwell, associate professor of accounting, and Wilmer E. Wise, assistant to the dean of men.

Student initiates were Gary Robinson, Arthur Schneider, Richard Lloyd, John Black, Lee Van Bremen, William Jaffe, Karl Tremba, Donald Clagget and Steve Brown.

Going to Pitt? You'll Need a Hostess Gift . . .

the perfect way of saying, "Thank you for your hospitality!"

We have a large selection of appropriate gifts . . . priced within every student's budget at . . .

The TREASURE HOUSE

136 E. COLLEGE AVE.

Keep Christ in your Christmas

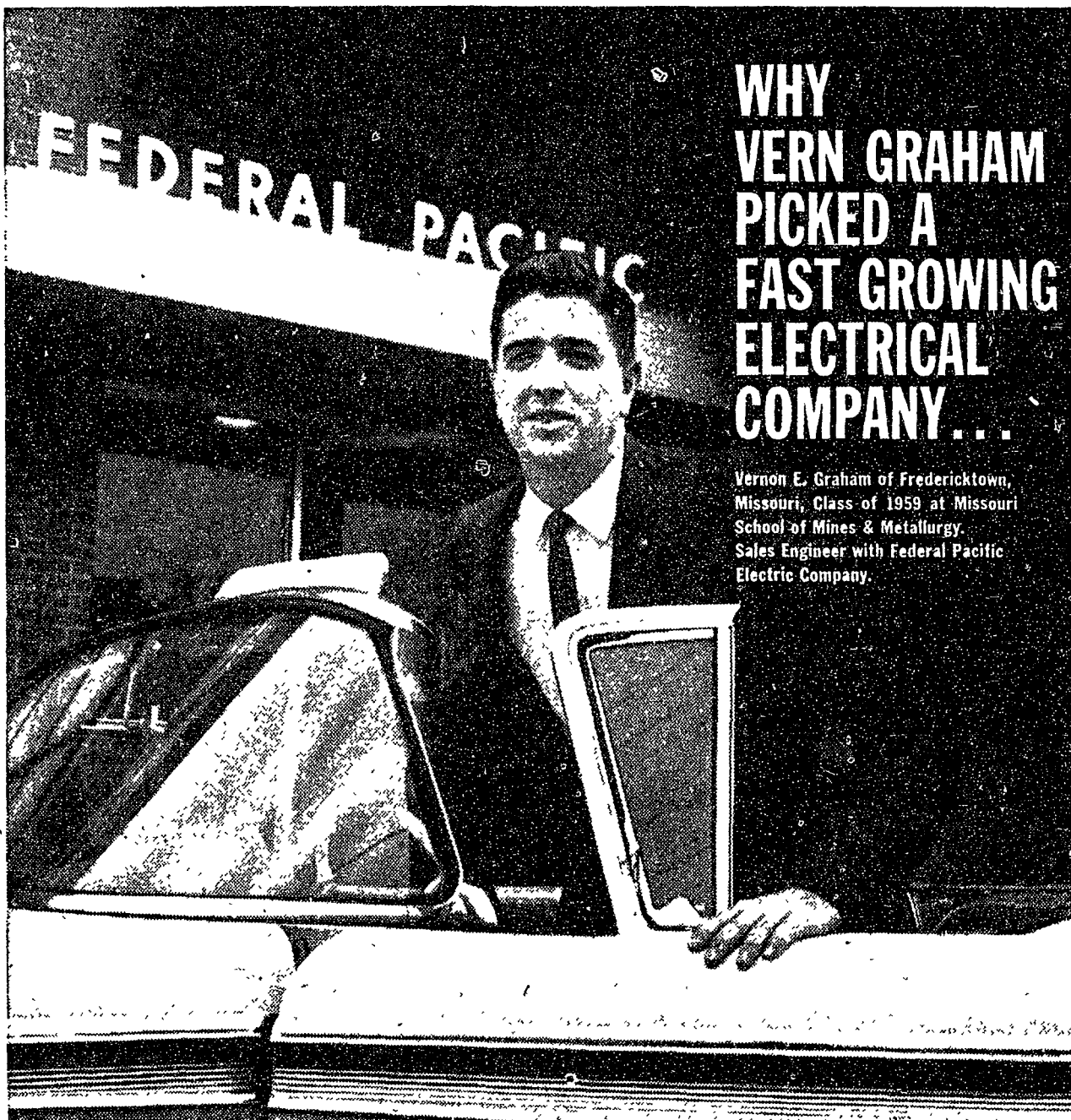


The true spirit of the first Christmas is reverently expressed in the dignity and quality of Gibson Christmas Cards.

See our complete selections.

KEELER'S The University Bookstore

206 E. College Ave.



WHY VERN GRAHAM PICKED A FAST GROWING ELECTRICAL COMPANY...

Vernon E. Graham of Fredericktown, Missouri, Class of 1959 at Missouri School of Mines & Metallurgy. Sales Engineer with Federal Pacific Electric Company.

“I figure I made the right move when I joined a fast-growing electrical company like FPE. You get in on the ground floor and you move up fast as the company expands . . . you're not submerged and lost in the shuffle. Do a good job and people hear about it. There's no paternalism—your own ability and determination are what count.”

WHAT SHOULD THE COMPANY IN YOUR FUTURE BE?

- An industry leader, professional in every phase of business conduct . . . with each product ahead of its field.
 - Expansion at a rate even faster than the remarkable growth of the electrical industry with a complete line of electrical distribution and control equipment.
 - A warm organization with room for personal growth and development.
- Federal Pacific is all this . . . and more.

THERE'S A FUTURE FOR YOU IN ENGINEERING—SALES

A Federal Pacific Representative will be at Pennsylvania State University on Friday, Nov. 20. Your placement director can arrange an appointment. Watch for this FPE Interview Date. If you cannot attend, write to:

C. A. Schmidt, Director-Student Training
Federal Pacific Electric Company
50 Paris Street, Newark 1, New Jersey



FEDERAL PACIFIC ELECTRIC COMPANY

Affiliated with Cornell-Dubilier Electric Corporation