

**Coeds Attention!**

# Counselor Says College 'Hunting Ground for Men'

By NICKI WOLFORD

"I think a girl who comes to college should consider it a hunting ground for men. This (the Penn State campus) is really a bonanza for finding a husband."

These rather blunt statements were made to 20 coeds last night in Haller lounge by Dr. Clifford Adams, marriage counselor. His talk was planned by the Association of Independent Men and Leonides as a part of Indie Week.

Adams was discussing the facts about Penn State men and women with respect to marriage. Most men list companionship as the most important thing in marriage and the women list love as the foremost aspect of marriage, he said.

The men usually list sexual satisfaction as the second most important thing and the women place it fifth, Adams said in showing the differences between what men and women desire.

But, he said, what you want may not be what you need or what you can get. These differences in values are the chief reasons for conflict in marriage, he said.

Adams, in explaining why the divorce rate is lower among college graduates, said that most of the graduates are older than the average person when they marry. "The younger we marry, the more likely we are to make a mistake," he said.

He said the divorce rate

among Penn State graduates was the lowest of any institution in the east. Since there is no distraction of a city, men and women see more of each other. This was one of Adams' explanations for the low rate.

He said that the campus was a good place to find a husband because of eligible males and coeds ought to have husbands "pretty well lined up" before graduating.

About one half of the Penn State women who are ever going to marry, marry within the first eight months after graduation, he said.

## Methodist Organizations Markham Will Conduct To Hold Costume Party Journalism Research

Kappa Phi, Methodist girls' club, and Sigma Tau Epsilon, Methodist men's club, are sponsoring a Halloween costume party at 8 tonight in the Wesley Foundation. Admission is 35 cents if a costume is worn, and 50 cents if not. Proceeds of the party will go to the UNICEF.

Dr. James W. Markham, professor of journalism, will be on leave next semester to conduct research on comparative journalism and international communication. Markham plans to work in State College and in Washington, D.C., where he will consult documents at the Library of Congress.

For CLASSIFIEDS Call UN 5-2531



**T.G.I.F. Combo**  
TODAY 4 to 6 P.M. and 9 P.M. to 12:30 A.M.

Tonight, all "3 levels of Atmosphere" are open. Relax and enjoy the music of the Don Krebs Quartet.

Saturday Night, our "2nd level" is open for your Hi-Fi listening pleasure.

**Campus Party Clique Meeting**  
7 P. M. SUNDAY  
10 Sparks  
Final Nominations



Presents  
in the Regular Friday  
Night Jazz Session

the fine instrumental stylings of the JW QUARTET combined with the songs of Frieda Lee. Be entertained in an atmosphere of old world charm, featuring original oil paintings and candle lite. FRIDAY, Oct. 30, 9 to 12:30.

NOTE: Beginning Tues., Nov. 3, LA GALLERIA will be open Tuesday thru Saturday again serving their excellent selection of Italian and American dinners.

221 E. Beaver Ave.  
Next to the Coffee Spot

## Jr. Panhel Party To Feature Skit

The Junior Panhellenic Council organized their fall pledge party to be held at 7 p.m. Nov. 12 at a meeting last night.

A skit, satirizing rushing procedure combined with a "Clash Fashion" show will be presented by volunteers from the various pledge classes represented on the council. Janice Harms, sophomore in secondary education from Reading, is chairman.

Other committee chairmen are Donna Roberts, sophomore in elementary education from Hazleton; Irene McDonald, sophomore in elementary education from Irwin; Patricia Altimus, sophomore in elementary education from Uniontown; and Marilyn Chapen, sophomore in elementary education from Philadelphia.

Come See Players'

"ON  
BORROWED  
TIME"

This Weekend  
At Center Stage

## AUTUMN

The time is this weekend, the place is Boalsburg to see the most colorful display of Mother Nature. Drive out now, and for your added relaxation, stop at Duffy's, where you'll have the best-tasting food in a long time. Your steaks are done to your exact specifications. The atmosphere is informal and your favorite beverages are served.

**Duffy's**

Saturday: 5-9:00 p.m.  
Sunday: 12-9:00 p.m.  
In Boalsburg, 4 miles east of State College on Route 322 (turn right at the Texaco Sta.)

## ATTENTION

# ALL LES GIRLS ON THE PSU CAMPUS

**S**TUDENTS  
STAFF  
SECRETARIES

We know all of you don't own automobiles but we assume most of you know someone who does — so, HITCH A RIDE to

*the Atherton shop  
for women*

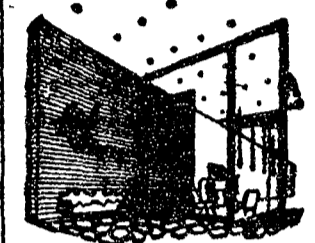
725 South Atherton Street

for the largest selections of dresses in State College!

Sizes 5-15 and 8-20

Telephone AD 8-2212

P.S. We have skirts, blouses, handbags, suits and coats, too.



Through the  
Looking Glass

with Gabbi

So you think you're well-adjusted? Have you ever taken those little tests included in the magazines you read in your dentist's office?

They run something like this: How do you spend your free time?

If some, how so?

If none, why none?

How often do you get that urge to stop in Ethel's?

You might not think this very important, but every well-adjusted person in the State College area often gets that urge.

## FOR YOUR CONVENIENCE

Ethel's large selection of greeting cards has been moved to the front and left side of the store. This makes for easy browsing and choosing. We have multitudes of Halloween and Thanksgiving cards plus the usual birthday, anniversary, and get-well variety.

## ANOTHER INNOVATION

is a front and center section which features men's items and desk supplies. Get that guy of yours off to a good start with a traveling clock in a leather case. If he's planning an extended trip, like he's going into orbit, buy him a palm-sized set of English, German, French, and Spanish dictionaries in a handsome leather case. While we're on this leather kick, take a look at Ethel's selection of Cordovan wallets in the new fall colors, and if he's the free and easy type, he'll appreciate our new collection of free form tie tacks in bronze, sterling silver, and copper. Ethel also has a well-stocked stationery department featuring Crane paper products.

## IN ETHEL'S BATH SHOP

you will find individual white, hand-painted ceramic bottles labeled cotton, powder, cologne, and tonic. Don't ask me, I don't know what tonic is either. Make all the coeds jealous by turning up with the only jeweled tissue box on the second floor. They come in pink, blue, and white with painted flowers and rhinestone decorations. To make your closets and drawers smell real "purdy," try rose bud sachet in attractive glass bottles. Finally, Ethel is featuring the Loofa Bath Sponge, a vegetable fibre sponge which swells when wet and revitalizes the skin.

See you soon?  
Gabbi.

*Ethel Meserow*