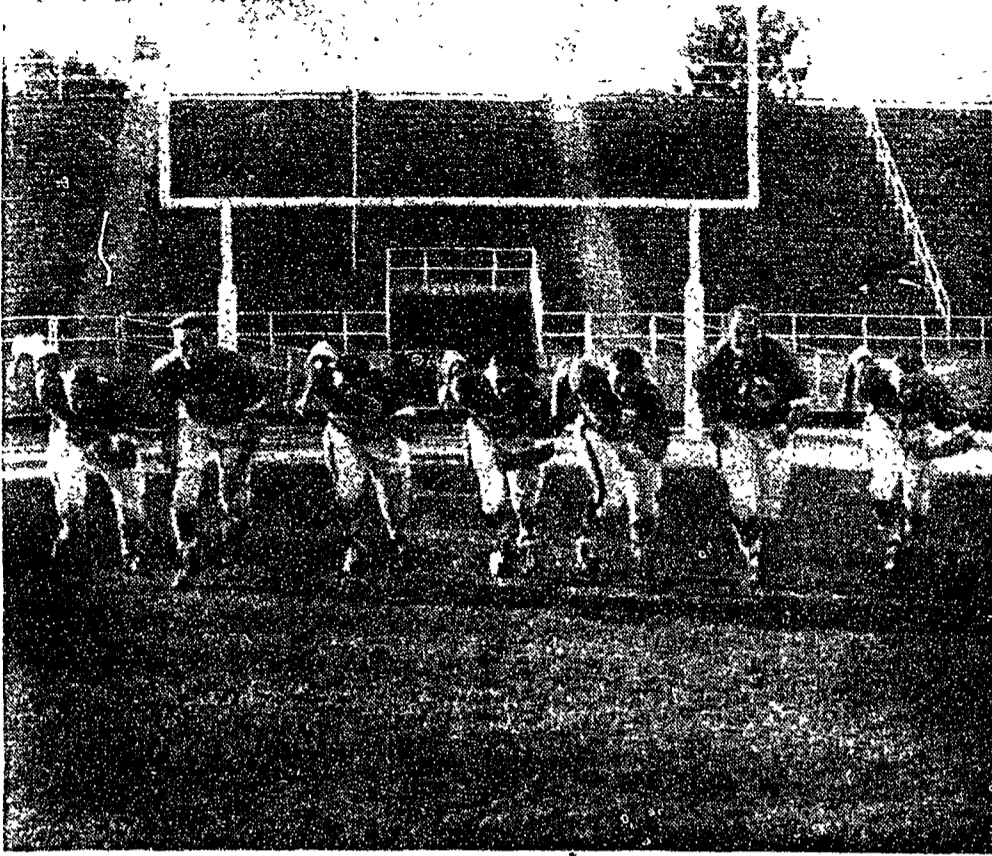
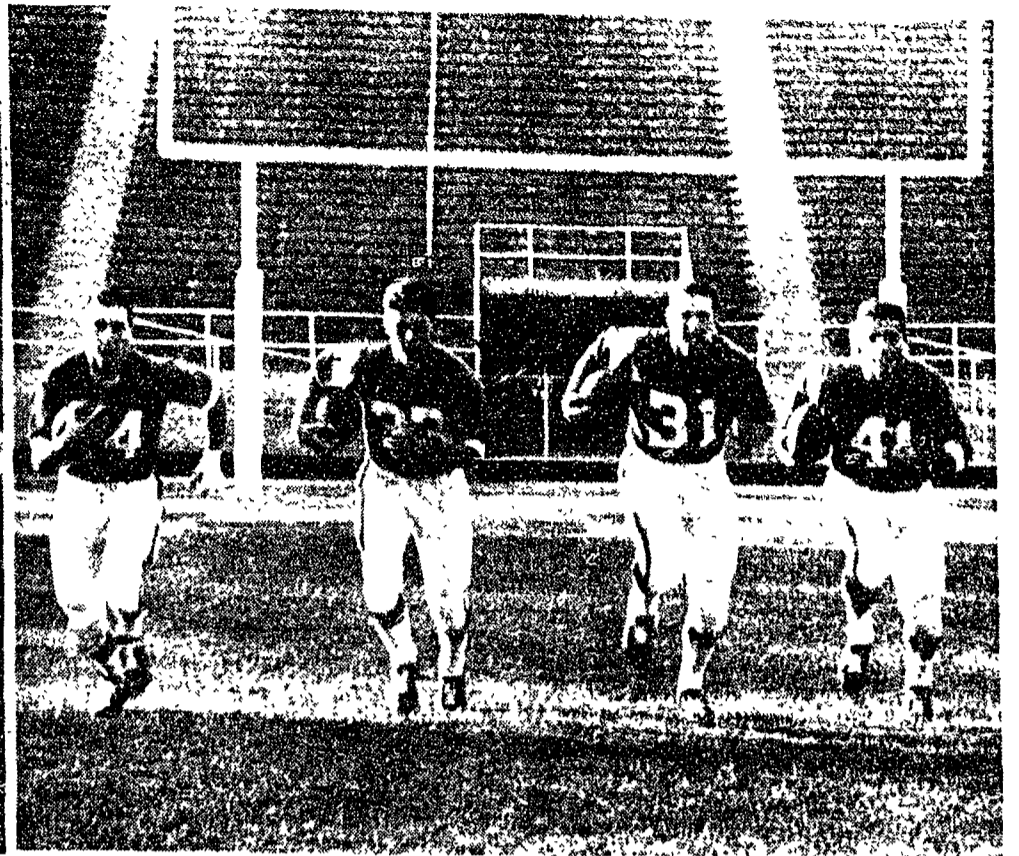


# Nittanies Risk Perfect Record



**STARTING LION LINE**—(l-r) Norm Neff, Tom Mulraney, Bill Popp, Jay Huffman, Bud Kohlhaas, Andy Stynchula, and Henry Opperman.



**STARTING LION BACKFIELD**—(l-r) Jim Kerr, right halfback (14); Richie Lucas, quarterback, (33); Pat Botula, fullback (31); and Dick Hoak, left halfback, (41). —Collegian Photo by Charles Jacques

(Continued from page one) been the leading Terrier passer for the last two seasons and this year he appears to have picked up where he left off. Cancro, along with DiNitto stands just 5-8 and weighs 170, but he's been the top ground gainer on the Terrier squad for two years. This year he's picked up 103 yards in 31 carries for an average of 3.3 yards per carry. Top honors in that department go to starting left halfback Hugo Bolin. Bolin, from Mansfield, Mass., has rushed for 163 yards in 27 carries, an average of 6.0 yards a carry. Sophomore fullback George Bradley rounds out BU's starting backfield. Bradley was a quarterback last Fall but Sinko switched him to fullback this year and the change is working out fine. Big Pat McCue at right end

gives Sinko and Boston U a strong starting end corps. The rest of the starting team finds Bob Minihane and Paul Manganaro at tackle, John Meschino and captain Len Pare at guard, and Bob Marques at center. Penn State coach Rip Engle has made one change in his first unit for today's game. Tackle Andy Stynchula moves up from the second unit in place of Charley Janerette. The rest of the lineup is the same. Norm Neff and Henry Opperman are the ends, Tom Mulraney is the other tackle and Bud Kohlhaas and Bill Popp are the guards. Jay Huffman will be the center. In the backfield the Lions have Richie Lucas at quarterback, hardrunning Dick Hoak at left-halfback and Jim Kerr at right-half. Penn State's captain Pat Botula is the fullback. Lucas has been having one of those years every college ball-

player dreams about. In the first four games he's done everything right. He was picked as Sports Illustrated's back of the week for his performance against Missouri and this past week the Associated Press picked him for the same honor for his showing against Army. Lucas ranks fourth in the nation in total offense this fall and is 12th in passing. He has completed 33 of 58 passes for 442 yards and four TDs. Sophomore quarterback Galen Hall who also is having a banner season heads Engle's second unit. Hall has thrown 12 passes this year and has completed nine. Halfbacks Dick Pae and Eddie Caye and fullback Sam Sobczak round out the second unit backfield. The line has John Bozick and Bob Mifinger at ends, Janerette and Stu Barber at tackle, Frank Korbbini and Sam Stellatella at guard and Jim Graham at center. After today's game the Lions travel to Cleveland, Ohio, for an intersectional clash with the Fighting Illini of Illinois. As a team, the Lions are fourth in the nation in total offense and are seventh in scoring. Kerr leads the Nittanies in rushing with 172 yards in 32 carries. Lucas is right behind him with 152 while Hoak is third with 151.

## Freshman Football Squad To Meet Panthers Today

By JOHNNY BLACK  
Having suffered their first loss in three years at the hands of the West Virginia freshmen last Saturday, the Lion Cub gridders face their second test of the season beginning at 10 o'clock this morning when they kick-off against the Pittsburgh frosh on Beaver Field. The Nittany yearlings will have their work cut out for them, for Coach Earl Bruce said that according to reports, the Panthers will field a better balanced freshman club than West Virginia did last week. In fact, propaganda emanating from Skyscraper U. indicates that this is the best Pitt frosh team in years. Another Nittany skein will be placed on the line today, for the Penn State freshman have run up a string of three wins and two ties against the Panther fledglings. The last time the Pitt freshmen beat Penn State was in 1953. Coach Bruce has announced two changes in his starting lineup for the contest this morning. Ron Tietjens, 6-0, 222-pound tackle, will take over at left tackle for the injured Arnold Habic. Tietjens was a member of the state high school "Big 33" and played in the All-Star game at Hershey in August. The other change involves a two-way switch in the backfield. Bud Torris, the Jeanette speedster who ripped off two long runbacks to provide the only sparkle against the Mounties last week, has been moved from his starting fullback slot to the left halfback post. Dave Hayes, a 6-1, 208-pounder, will get the starting role at full. Chris Weber, the leading ground-gainer from scrimmage in the Lion Cubs first game, is Torris' running mate at right half. Pete Liske will again be the starting signal-caller. Dave Robinson, who was the

## State - BU Lineup

No.	Wt.	PENN STATE	Pos.	BOSTON U.	Wt.	No.
89	(201)	Henry Opperman	LE	Gene Prebola	(210)	89
78	(227)	Andy Stynchula	LT	Bob Minihane	(230)	75
60	(226)	Earl Kohlhaas	LG	Bill DiLorenzo	(220)	74
51	(192)	Jay Huffman	C	Jack Stephens	(200)	55
64	(203)	Bill Popp	RG	Len Pare	(210)	65
79	(213)	Tom Mulraney	RT	Jaul Manganaro	(218)	73
83	(204)	Norm Neff	RE	Pat McCue	(195)	80
33	(185)	Richie Lucas	QB	Emo DiNitto	(170)	10
41	(190)	Dick Hoak	LH	Hugo Bolin	(175)	31
14	(180)	Jim Kerr	RH	Paul Cancro	(170)	40
31	(195)	Pat Botula	FB	George Bradley	(200)	12

TIME: 1:30 p.m. (EDT).  
PLACE: Beaver Field.  
CROWD: 26,000 expected for Homecoming Game.  
1959 RECORD: Penn State (4-0)—Boston University (1-2).  
NEXT WEEK: Penn State vs. Illinois at Cleveland; Connecticut at Boston.  
SERIES: Penn State holds 5-0 edge.  
1958 SCORE: Penn State won, 34-0.

**No Winter Ball**  
NEW YORK (AP)—There will be no winter ball this year for World Series hero Larry Sherry, busy cleaning up dollars like he did White Sox in the classic.

**LOST or MISPLACED**  
One illuminated, pythagorean, triangular prism. Believed at one time to be used for porch decoration.  
**Contact Pledges at Acacia**

**ALUMNI**  
Duffy's is just the way you remember it—friendly and old-fashioned. The delicious food is cooked and served to your own specification. Duffy's will bring back pleasant memories of your college years, whether you graduated in '19 or '59. Why not come out for Sunday dinner?  
**Duffy's**  
Saturday: 5-9:00 p.m.  
Sunday: 12-9:00 p.m.  
In Boalsburg, 4 miles east of State College on Route 322 (turn right at the Texaco Sta.)

**YOUR OFFICIAL**

## PENN STATE CLASS RING

**ORDER BY MAIL TODAY**

Alumni... by

Balfour

It's a short yell—State—with dignity, everytime your Penn State ring flashes on your finger. Proud of Penn State? Express this pride by wearing your Penn State Ring... The official ring created by BALFOUR and worn by thousands of ALUMNI. Your old roommate likely wears this ring—why not you?

**Fill Out and Mail This Order Form Today**

**L. G. BALFOUR** — Branch Office, Athletic Store  
State College, Penna.

Add prevailing State or City Tax (Deposit—10.00 Minimum)

Syn. Ruby Finger Size.....

Syn. Sapphire\* Initials.....

Heavy 32.75  Women 21.75

Fed. Tax 3.28 Fed. Tax 2.18

\*Add 1.00 to above for fire sapphire

Name .....

Address .....

City ..... Zone ..... State .....

Year of Graduation....