

# Addison Overcome By Music's Beauty

By SUSIE LINKROOM

Tears streamed down the cheeks of soprano Adele Addison during the last part of her concert Saturday night.

Miss Addison, sang, as her final number, Handel's Lucrezia (Cantata No. 46) with Albert Fuller accompanying her at the harpsichord. She was so moved by the music, that tears were visible on her face.

At the end of the aria and recitativo, she received a loud ovation from the audience but did not appear for an encore.

Miss Addison and Fuller also performed works by Litzes, Rossini, Laserna, Purcell and Scarlatti.

Following the program, Miss Addison and Fuller signed autographs for an admiring group of students. Miss Addison, though in good spirits, seemed tired after the performance. She was dressed in a blue dress with an empire waist, a long train and gold piping.

When asked what kind of music he thought was preferred by college students, Fuller quipped that he was not "unhep" to the world of rock 'n roll, and that he frequently listened to it as he shaved in the morning. He explained that he found that "fortunately" young Americans were listening to serious music more and more.

The harpsichord that Fuller played drew a lot of people to the stage after the concert to examine it. The harpsichord was a forerunner of the piano. It has a narrower keyboard and a more delicate frame.

The sound of the harpsichord

is hollower than the piano, almost tinny. Inside the top of Fuller's harpsichord was inscribed the motto, "Music removes the disturbed spirits and senses." Several hand-painted scenes and objects decorated both the inside and the outside of the case of the instrument.

# Binark Named Research Head

Dr. M. Hikmet Binark, newly appointed research associate in mechanical engineering, has taken over direction of a 5-year research project on air cleaning problems in the Mechanical Engineering Department.

This project, now in its third year and sponsored by the U.S. Public Health Service, deals with the fundamentals of removing liquid and solid impurities from the air by various mechanical devices.

Dr. Binark came here from the Technical University of Istanbul, Turkey, where he was professor of mechanical engineering. He joined the University staff in 1944 as an assistant.

BEAT ARMY

# Encampment Pictures

Student Encampment participants who ordered group pictures may pick them up beginning today at the Hetzel Union desk. The pictures cost 75 cents.

# Pollock Now One-way

Pollock Rd. between Entrance Rd. and Shortlidge Rd. will be one-way traffic west for several days due to construction work.

# Looking For Records?

You'll Find What You Want AT



Beaver at Frazier

Open Evenings until 9:00 p.m.

"The Most Complete Record Selection in the Area"

Just four years out of college...

# He heads a team of 63 people

L. Dean Darbe graduated from Kansas State U. in 1955 with a B. S. degree in electrical engineering. Today he is Supervising Service Foreman for Southwestern Bell Telephone Company at Hutchinson, Kansas. Dean has five Foremen and 58 craftsmen reporting to him. He's got full responsibility—covering installation, maintenance, testing and repair—for 21,000 telephones and all the equipment that serves them.

"It's interesting work," says Dean, "and it keeps me on the go. Here are a few of my activities during a recent day on the job."



# Fall Informal Rush Ends Thursday

Sororities and rushees will sign preferential bidding cards Thursday night as the two weeks of informal rushing draw to a close.

Each rushee must pick up her own preferential cards in the office of her residence hall hostess at 8:15 p.m. Thursday after she returns from her last chatter date. Town women should pick up and return their cards in Mrs. Hathaway's office in Atherton.

The rushee must rank and sign the cards making a first and second choice. These cards must be turned in to the hostess by 9:30 p.m. in order for the girl to be included in the bidding, according to Mrs. Norma Mountan, advisor to Panhellenic Council.

Sororities must submit lists of their preferences of rushees to the dean of women's office by 8 a.m. Friday.

Sorority and rushee preferences will be matched by IBM machines, and final lists will be compiled in the dean of women's office. Sorority rush chairmen may pick up their lists of rushees at 4:30 that afternoon. Bids will be issued immediately and ribboning will take place at 7 p.m. in the sorority suites.

Of the 361 girls who registered for rush Sept. 24, 17 have dropped out so far. All sororities except Delta Gamma and Kappa Kappa Gamma are rushing this semester.

# Fenske to Address ChemEng Institute

Dr. Merrell R. Fenske, new head of the Department of Chemical Engineering, will address the University chapter of the American Institute of Chemical Engineers at 7 tonight in the Hetzel Union assembly room.

Fenske will discuss the questions, "What is a Chemical Engineer?" and "How Does Chemical Engineering Apply Now and in the Future?"

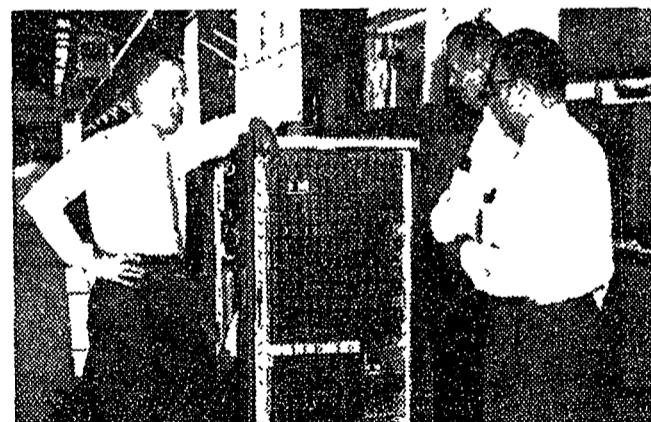
The meeting is open to all undergraduate chemical engineering students. However, a student must have fourth semester standing to become a member of A.I.Ch.E.



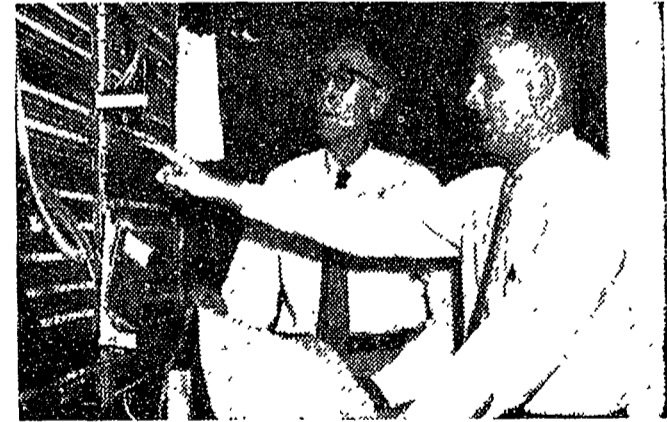
"8:30 a.m. I meet with one of our Foremen at the plant garage to discuss a cable-pressurizing job. We're putting all aerial cable in Hutchinson under air pressure to keep out moisture which causes cable failure and costly service interruptions."



"10:15 a.m. My boss, District Plant Superintendent Randy Barron, and I go over plans for an addition to our dial central office. Several pieces of large and complex switching equipment will have to be rearranged to tie in with the new facilities."



"1:30 p.m. After lunch, I drive out to the new plant of a mobile home manufacturer. My men are completing installation of a new-type cordless switchboard. I discuss features of the new equipment with the firm's Vice President and Plant Manager."



"3:00 p.m. At our toll center we'll soon be adding another test desk to increase our facilities for 'trouble shooting' Long Distance circuits. Here, with our Chief Testboardman, I go over some of the board changes which will have to be made."

"That's about it for one day. Tomorrow's schedule will be different. I'm doing interesting, challenging work all the time—and I'm given plenty of responsibility. That's what I like about my job."

There are countless young men like Dean Darbe who are moving ahead in supervisory careers with the Bell Telephone Companies. You could be one of them. Talk it over with the Bell interviewer when he visits your campus—and read the Bell Telephone booklet on file in your Placement Office.

BELL TELEPHONE COMPANIES

