



Pollock Rd Extension Study Asked

The State College Area Safety Council Monday asked that a study be made to consider the possible extension of Pollock Rd. to direct traffic to the western section of the borough.

The council also requested that a study be made to determine if University traffic traveling east could enter Benner Pike from Curtin Rd.

This action was taken after council voted to accept a report drawn up by a special committee which has been studying the traffic problems of the borough.

In attempting to eliminate the traffic problems, the report advocated the following program be started immediately.

An eventual Rt. 322 by-pass around the borough.

Borough residents be urged to use other north and south bound streets such as Sparks, Pugh, Garner and Allen Sts. to ease the load of traffic on S. Atherton St.

Sidewalks be installed on both the east and west sides from Prospect Ave. to Westerly Pkwy.

In other action, the council decided to sponsor a program to promote pedestrian safety among University students. Miss Sue A. Clement, a representative of the Women's Student Government Association, was appointed to coordinate the program.

Mrs. Mary Schmid, president of the State College Area Safety Council, said that if the students would be interested in a safety program, the council would be happy to provide speakers and technical advice that was needed.

She also said that such a program would help promote good relationships between the students and borough residents.

Encampment Report

Workshop Suggests Improved Elections

By CATHY FLECK, Assistant Editor
(Second of a Series)

Recommendations for improving the elections system, expanding the Elections Committee, and stressing political party responsibility, along with several other suggestions, will go before the Assembly for approval in the near future.

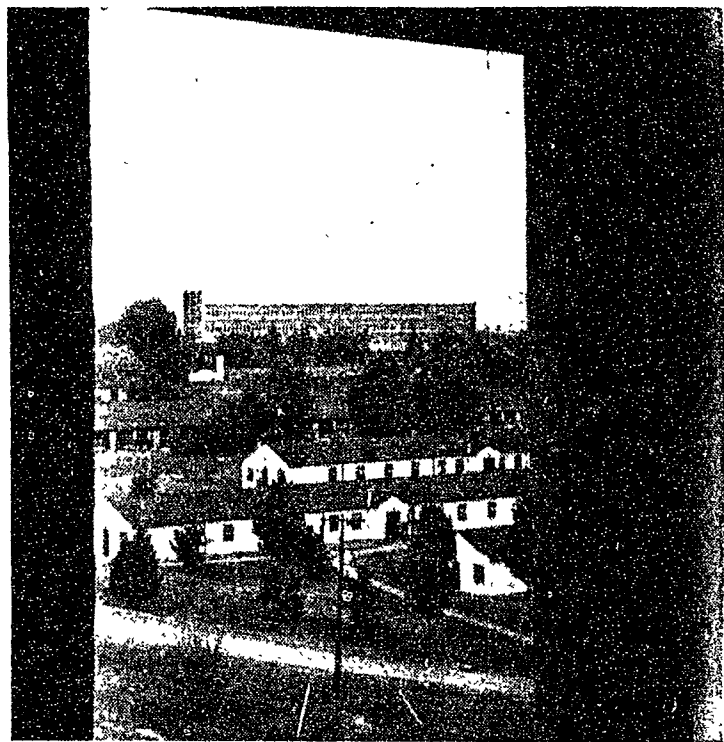
The SGA workshop of the 1959 Student Encampment discussed problems pertinent to the role of political parties and elections under the reorganized student government system and came up with the following suggestions:

A committee be formed to study the aspects of the election system and in particular, the advisability of having first semester freshmen run for assembly positions. The workshop committee felt that the election system, as well as the features of student government, should be keyed to the academic calendar.

Clique or party chairmen of each political party be directly responsible for the financial actions of his officers and his party as a whole in accordance with the Elections Code.

The Elections Committee be expanded and decentralized voting be continued. The Committee investigate provisions to insure the safety of decentralized voting.

Political parties be strongly encouraged to include at least one member from each college. The opening of party caucus



LOOKING NORTH—From the eighth floor of Pollock Circle Residence Halls is seen Wagner, the new Military Science building. In the foreground are several Nittany Hall units.

New Light Thrown On Dating Habits

A new light was thrown on the University's dating problems last week when four 35-foot light poles were installed in the Hetzel Union parking lot.

Lights for the poles haven't arrived yet, but some students might not like the idea already, according to H. E. Byers, assistant head of the Utilities Division.

Ag Students' Pictures To Be Taken for LaVie

Agriculture students will be photographed for the 1960 LaVie from today to Oct. 5.

The portraits will be taken by official LaVie photographers at the Penn State Photo Shop, 214 E. College Ave. between 9 a.m. and 4 p.m. Monday through Friday.

Mr. Byers was referring to the students who populate the parking lots on date nights.

However, there was a more important reason for putting lights in the parking lot.

Elwood S. Olver, director of the Department of Security, recommended that lights be put in parking lots to protect the students' property and the pedestrians walking late at night.

As an example, he cited the fact that two wheels were taken from a student's car in parking lot 50 a few weeks ago. Lot 50 is located behind the former site of the Jordan fertility plots.

Mr. Olver said, "Eventually every parking lot will be reasonably well lighted."

Besides the HUB parking lot, light poles have already been placed in lots 50 and 82 located at the corner of Entrance Rd. and Three-Mile Rd., 71 behind the Agriculture Building and 83 across from the Military Science Building.

Lights on poles in the HUB lot will work on the street light circuit. The lots inaccessible to any power outlet will work on photoelectric cells, coming on gradually as it becomes darker.

300 Drivers Hit by Fines

Many students are learning about the new parking regulations the hard way—they are paying fines.

Capt. Philip A. Mark, traffic violation's officer of the dean of men's office, said up to 5 p.m. Friday, 178 fines had been paid for parking in the wrong area and 50 for cars without registration permits displayed.

Mark said no tickets had been given for driving on Pollock Rd. The new regulations makes student driving on the road illegal at any time except for traffic from the Hetzel Union parking lot to Shortlidge Rd. during peak hours.

More than 50 fines were paid yesterday morning, bringing to more than 300 the total number of tickets given out.

Gracie Heads Toward State

By JOEL MYERS

Mighty hurricane Gracie moved inland on the South Carolina coast early yesterday afternoon, bringing with it torrential rains and winds up to 140 miles per hour.

The big tropical twister battered the port cities of Charleston and Savannah for several hours, before moving into the northern portion of the state.

Rain and winds will gradually increase in the State College area today and the rain should become heavy by late in the day. Indications are that three inches of rain will fall in this area during today and tonight. If this prediction proves accurate, this will be the heaviest rain observed here in more than three years.

Winds will increase to 25 to 40 miles an hour with a few gusts to 50 miles an hour likely during the evening.

Gracie carried winds of gale force and spread heavy rains well out in front of its center.

Most persons in the areas hit followed Weather Bureau advice and loss of life and property damage was held to a minimum. Up until late Tuesday, only one death had been attributed to the storm.

Damage was extensive through a good portion of the Carolinas due to the winds and rain. Many people were without power as a result of the felled trees and electric lines.

The problem of flooding in those areas, will arise due to the rising rivers and streams caused by the excessive rainfall. Ten to 15 inches of rain fell in the Eastern two-thirds of North and South Carolina during the past 24 hours.

The hurricane will weaken slowly as it moves northeastward through Virginia today. However, winds of gale force and heavy rains will continue in Virginia and should gradually overspread the eastern half of Pennsylvania during the day.

Winds along the Atlantic coast from Cape Hatteras northward to New York City will range between 40 and 75 miles per hour and tides will run several feet above normal. Small crafts from the Carolinas northward to New England have been warned to stay in port and the Boston Weather Bureau told all fishermen to secure their moorings.

Although heavy rains and strong winds will strike Central Pennsylvania, the eastern and southern sections of the state will experience much worse conditions. Up to five inches of rain and winds close to 60 miles an hour are expected.

New Rules Cause More Violations

Over 300 traffic violations have occurred on campus since the first day of registration for fall semester classes, according to Capt. Marks, traffic violations officer.

Failure to comply with the new parking and traffic regulations has been the cause of most of these violations.

The number of violators is expected to decrease as student drivers become more familiar with the changes in rules.

Most important among the changes made are:

All students who possess, maintain or operate a motor vehicle in Centre County must register such vehicle with the Traffic Violations Officer, 203D Hetzel Union Building, before bringing it on campus. Failure to do so will result in a \$5 fine.

No student may drive on Pollock Road between Burrows and Shortlidge Roads at any time.

No student motor vehicle without a parking permit may be driven on campus between 7:30 a.m. and 5:30 p.m., Monday through Friday, or between 7:30 a.m. and 12:30 p.m. on Saturday.

A non-refundable fee of \$15 per semester for parking on campus was also initiated this semester. The parking permit designates the number of the one area on campus where the vehicle may be parked. A fine of \$5 may be charged for failure to display this permit or the registration sticker.

At present, 3100 vehicles have been registered, Marks said.

Men to Tryout for Debate

Tryouts for men's debate will be held at 6:30 tonight in 214 Boucke. The tryouts are open to both upperclassmen and freshmen.

Tickets for Concert Available at HUB

Student tickets will be available at the Hetzel Union desk beginning at 1 p.m. today for the second Artist Series program.

Adele Addison, soprano, and Albert Fuller, harpsichord player, will present a concert at 8:30 p.m. Saturday in Schwab Auditorium.

Miss Addison was born and raised in Springfield, Mass. It was in the eighth grade that her singing talents were first noticed, and this recognition led to scholarships to aid in her vocal studies.

Eventually Miss Addison made her debut in Boston when she appeared in the New England Opera Company. Following this engagement, she toured France with the Boston Choral Society.

In 1952, she made her New York debut. It was in this appearance that Miss Addison began to move into the ranks of those considered the finest singers in the country. Since this time she has performed on several other occasions with the New York City Opera Company, and with the symphony orchestras of Cleveland, Boston, and New York.

Fuller joined Miss Addison last spring during the Handel Festival and has since made several appearances with her. He made his debut in New York in 1957 and has performed as a recitalist and accompanist several times.

Fuller studied at the Washington Cathedral and at Yale University. He also studied Baroque music in Europe.

Non-student tickets will go on sale at 9 a.m. tomorrow.