

HUB Acts As Center For 'Society'

The Hetzel Union Building, commonly known as the HUB, is one of the main centers for social gatherings, student activities and the between-class coffee breaks.

The building, named in honor of Dr. Ralph Dorn Hetzel, president of the University from 1926 until his death in 1947, was opened in 1955 during the University's celebration of its centennial anniversary.

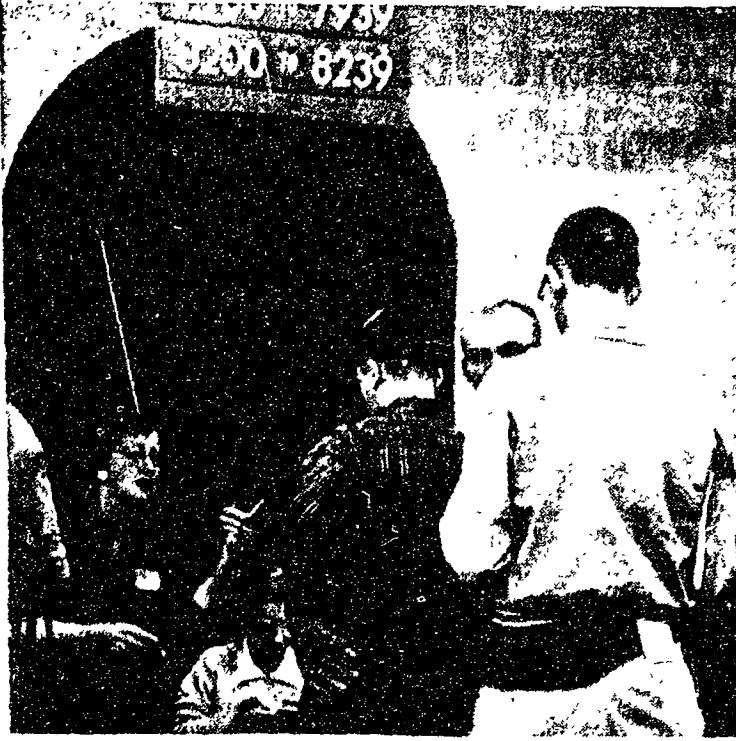
The first floor of the HUB provides lounges, art galleries, a reading room, an assembly hall, music studio and a ballroom. The HUB desk, located on the first floor, takes care of lost and found articles, information, theatrical and musical ticket sales, distribution of artist series' tickets, and notices of many student activities.

On the HUB's ground floor is one of the most popular gathering places of the campus—the Lions Den. In addition to a snack bar there is a card room and a recreation hall housing ping pong tables and other game facilities.

At the beginning of the fall and spring semesters, the card room is occupied by the Used Book Agency. The agency is run by the students, and students can buy and sell books. A student bookstore is also located on the ground floor.

The campus post office is an annex to the HUB on the ground floor. Its mailing address is University Park.

The second floor is mainly devoted to student activity offices including the Student Government Association Assembly meeting room. The use of the HUB's facilities is managed by William S. Fuller, director of associated student activities.



NAME, COURSE, AND MATRICULATION NUMBER PLEASE— Students are seen here at the first phase of registration where they pick up their master name cards. Registration will end at 5 p.m. today.

Units in Men's Halls Named To Foster "Esprit de Corps"

The University is trying to foster esprit de corps among the men living in Hamilton Hall and the North Halls. All of the separate units have been given names.

In Hamilton Hall they are Larch, Hemlock, Poplar, Locust, Birch, Maple, Cedar, Hickory and Linden.

The North Residence Halls, newly opened this year, will have its units named after counties in Pennsylvania.

In Runkle Hall—Philadelphia House, Dauphin House, Delaware House and Westmoreland House;

Leete Hall—Allegheny House, Lehigh House, Luzerne House and Berks House; Beam Hall—Montgomery House, Cambria House, Blair House and Lackawanna House and in Holmes Hall—Centre House, Bucks House, Schuylkill House and Erie House.

Each of the North Hall living units will accommodate 70 students.

The first counties whose names have been given to living units were derived from the enrollment from the county. All counties will be represented eventually.

IFC Rules Enforced By Own Board

The Interfraternity Council enforces its regulations through a Board of Control composed of fraternity presidents.

Under the chairmanship of Robert Parsky, the board has a number of checkers who visit fraternities each weekend to make sure that parties are adequately chaperoned and orderly. They also enforce the new rushing code which forbids first semester freshmen from entering a fraternity except during an open house.

Withdrawal of social privileges is the most frequent penalty. This means that a fraternity cannot entertain women guests for the period specified by the board. All decisions are subject to review by the Senate Committee on Group Discipline.

One of the new rules the Board will have to enforce this year is one passed by the IFC last spring requiring fraternities to have a 2.1 house average or else face disciplinary action by the Board.

Members of the Board of Control are: Richard Lucas, Jay Waterman, Richard America, Charles King, Ronald Filippelli and Harry Davidson.

Newspapers' combined run-of-paper color lineage, in cities measured by Media Records, Inc., has increased from a little over 46 million lines in 1951 to over 122 million lines in 1958.

Room For Four Boys with Cooking Privileges Shower - New Bed
Close to Campus.
Phone AD 7-2443

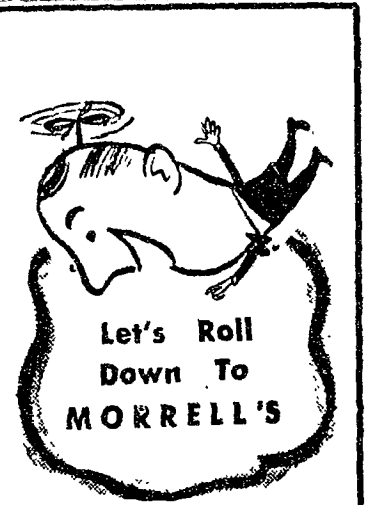
Dink Debut Tonight--

(Continued from page one) name of the college dean and the University president.

•No high school letters or awards may be worn. Only Penn State athletic awards are permitted.

•Violations of customs regulations will be reported by upperclassmen to the Freshman Customs Board and appropriate action will be taken against the offender.

•All freshmen over 21 years old will be exempted from Customs if they appear before the Freshman Customs Board.



You'll find a foot-long Hogle awaiting! It has 10 ingredients applied 13 times—a full 1/4 pound of meat. We deliver until midnight to dorms and in town. Call—

AD 8-8381

The Juliet Room Brings You A Wardrobe High On Your List For

Fall Fashion

You'll find the best-known names in the fashion world among the lovely fall styles in the JULIET ROOM . . . Shoes by MADEMOISELLE . . . TOWN & COUNTRY . . . TROYLINGS . . . MANNEQUIN . . . SANDLER of BOSTON . . . and the popular SNEAKERS for the campus crowd.

High style separates in all the luscious fall shades by . . . MAJESTIC . . . DAVENSHIRE . . . MIDGE GRANT . . . ADALAAR . . . GLENGARRY . . . BEDLOCK-POPPER . . . JEAN CASTLE.

Add the finishing touches to your wardrobe with fashion-right accessories. Handbags by CORONET . . . ELITE . . . BRITEMODE. Jewelry by ACCESSOCRAFT . . . RENOIR. ELEGANT BELT CREATIONS . . . scarves by ECHO . . . and hose, tights and socks by LARKWOOD . . . TRIUMPH NEWWEAVE.

The **Juliet Room**

109 S. Allen St.

