

From 1 to 3235

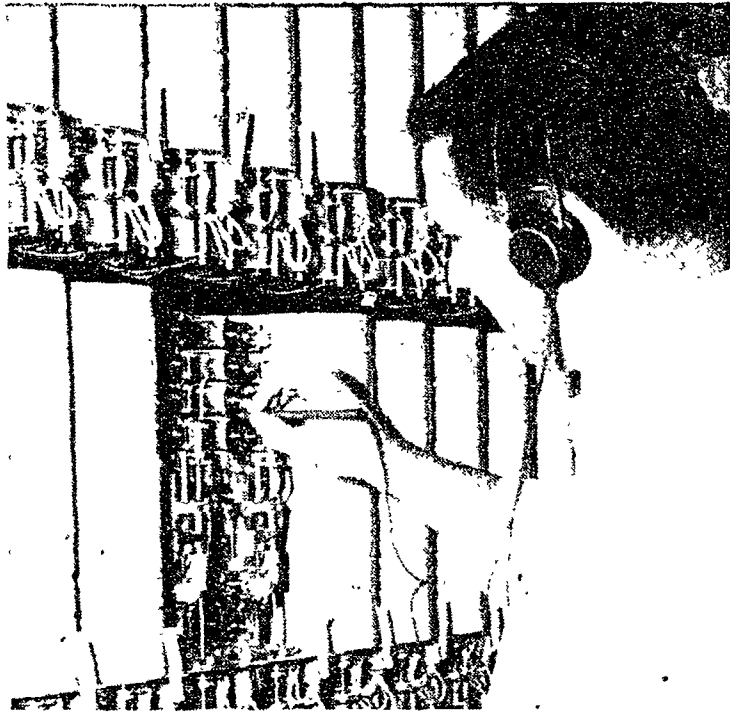
# Phone System Began in 1883

Seventy-seven years ago it was no problem to call directly to the telephone desired at the University — there was but one telephone.

Today there are 3235 telephones on the campus and beginning Sunday, it will again be possible for off-campus callers to dial direct to the telephone desired—if the caller has the number.

This direct dialing service is the main feature of the new system that is designed to speed calls to the campus.

The Bellefonte Democratic Watchman, in a terse paragraph, announced on June 22, 1883, that "the State College



A CIRCUIT in the new dial equipment is checked by Harold Snook of the Bell Telephone Company. This circuit is one of thousands housed in the new Telephone Building, behind Boucke Building.

now is connected by telephone to the outside world."

Earlier, the College catalog for 1882-83 reported that a line is under construction between Bellefonte and the College and that it should be in use during the school year.

By 1886, the University had been connected with Lemont, as well as Bellefonte, and in 1888 it was reported that State College has "eight houses from which one may have instant communication with any one of 166 other telephones of the Bellefonte Exchange and with 1800 others through the Central Pennsylvania Telephone Co."

Dr. George W. Atherton, whose 24 years as head of Penn State brought a new era to the struggling school, was responsible for the first telephone on the campus, although, Mrs. Helen Govier recalls, he always considered the telephone "an indispensable nuisance."

The first telephones were located in the President's Office, the Business Office, Engineering Building, Agriculture Building, and the Registrar's Office.

State College opened its own exchange, which was located at 130 E. College Ave., in 1898 and in 1900 there were 40 positions on the board, including the telephones in campus buildings.

Competition arose in 1898 when the Commercial Telephone Co. was organized by influential State College and Bellefonte residents "to render efficient service." Some University offices had both services. The Bell Telephone Co.

bought out the Commercial system in 1926.

More than 25 years later, on Oct. 3, 1925, the University began operation of its own switchboard. It was located in Room 105, Old Main.

There were three operators and the campus patrol was responsible for handling calls at night. The board had five trunk lines to the town, about 150 extensions, and the number was State College 500.

Following World War II it became evident that the growth of the University was making it impossible to locate people by name and officials insisted that extension numbers be used in placing campus calls. The installation of the present dial system in 1950 necessitated calling by number.

The campus dial system, with headquarters in Willard Building, followed the installation of the dial system in State College in 1936. When the dial system was introduced in the community, the University number was changed from 500 to 711. Later, this number was changed to 6711, as the community system grew, and in 1950, became 8441. More recently, as the result of further expansion, the number was changed to AD-ams 8-8441.

The system going into operation Sunday will combine the separate residence hall switchboard and the administrative office system into one University telephone system. The residence hall system was started with a small switchboard in Atherton Hall in 1938 and greatly expanded with the installation of the switchboard in Simmons Hall.

### Budget Cut—

(Continued from page one) monwealth as its State university.

The budget problem has been left untouched since early May when the Assembly became tied up in revenue raising problems. Gov. Lawrence has repeatedly said taxes must come first, then appropriations.

FOR GOOD RESULTS USE COLLEGIAN CLASSIFIEDS

**RINALDO'S BARBER SHOP**  
7 Expert Barbers  
Follow the Mall to Rinaldo's  
107 S. Allen St.

## Visit Pennsylvania's Largest Gift Shop

Gifts for every member of the family  
Gifts from all over the world

6 Miles West of State College  
on Route 322

## Winks Skytop Gift Shop

A 75 Mile Scenic View

Repairs  
Car Radios    Television  
Phonographs    Radios

television service center



at  
**State College TV**  
232 S. Allen St.



Miniature  
Golf  
is  
Fun!

Particularly  
at the

# NITTANY PUTT PAR

Free game if  
you make a  
hole-in-one on  
No. 18!!!

35c until 6 p.m.  
50c after 6 p.m.

Route 322  
3 mi. N. of State College

... for the finest in seafood served in a luxurious atmosphere, why not try the EUTAW HOUSE?

... we specialize in ... steamed clams ... oysters on the half shell ... lobster dinners ... and many other delectable seafood and country dinners

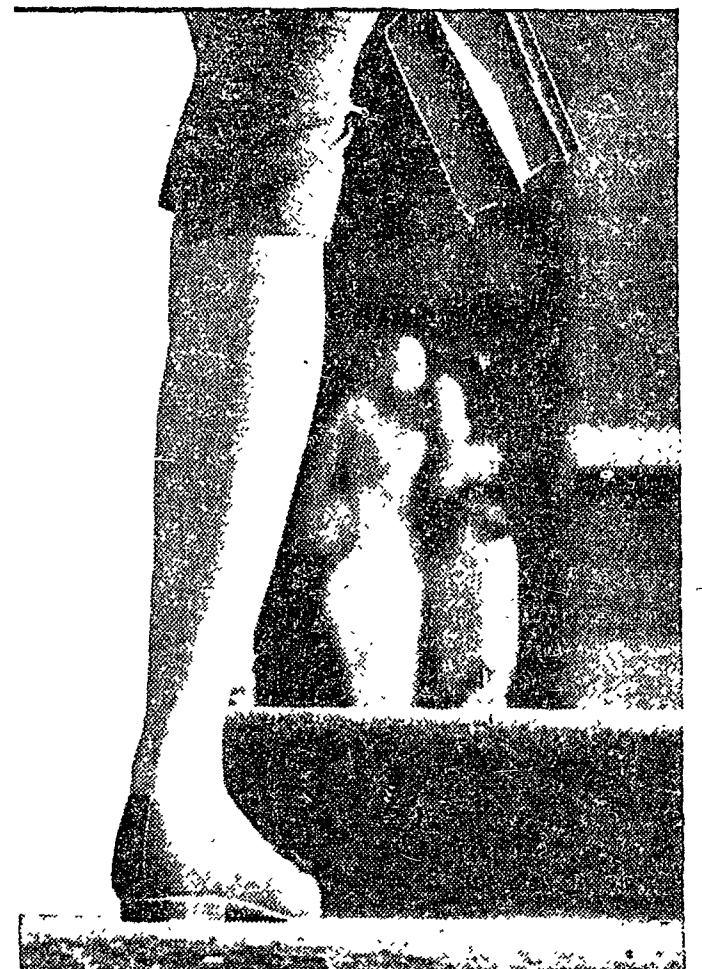
... and with your meal, enjoy your favorite cocktail

All this at the ...

## Eutaw House

POTTERS MILLS

13 Miles East of State College  
On Route to Lewistown  
EM 4-1039



go back to school

in *Janes*

seamless stockings

no seams to worry about

twin thread sheer \$1.35

new seamless stretch \$1.65

AIR-CONDITIONED

# Danks & Co

State College -- Bellefonte