



TWO SURPRISED STUDENTS. Tom Landis and Bob Buchenauer, talk with former British Prime Minister Clement Attlee in their room in McKee Hall. Attlee stopped in their room while on a tour of campus yesterday.

—Daily Collegian Photo by Bob Thompson

War Not Inevitable According to Attlee

An aged statesman, speaking almost exclusively in monosyllables, was asked if he thought war was inevitable—his answer "nope."

Clement Attlee, former prime minister of England, quietly puffed on his pipe as he answered questions from representatives of The Daily Collegian, Centre Daily Times, WMAJ, WDFM, and students of a journalism class.

Settled peacefully in a chair, the elder statesman proposed neutralizing Formosa for a period of time and then letting the Formosans make up their own minds. "Everyone has been doing it for them," he said.

Attlee said he thought that an easing of tensions and better understanding were the major reasons for Prime Minister MacMillan's trip to Russia.

Relighting his pipe, Attlee said Russia was quite possibly bluffing over their threat to get the West out of Berlin. He said the problem would probably be solved by "some kind of compromise."

Asked about the shifting of Russian pressure to different parts of the world, the elder statesman said they "push wherever they think there's a chance."

Only once did the man who has been in politics most of his adult life come out with a no comment answer.

Asked what he thought of American foreign policy he said he didn't think he should say anything "with the foreign secretary (Secretary of State) ill."

Commenting on the British concept of President Eisenhower, Attlee said they (the British) don't know how he acts but at times he seems like a "constitutional monarch."

The statesman, now in the House of Lords, said the British people do not have as much fear of the Russians as Americans do because "they have been too close to danger."

Attlee also favors seating Red China in the United Nations. He called it "realistic."

He said he didn't know if the United Nations could bring about an immediate peace. However, he thought it would have to undergo change in order to bring about a permanent peace.

A stronger military force was one of the steps Attlee saw in

strengthening the organization.

When the Labor government nationalized some of England's basic industries after the war, some of Attlee's policies were attacked by Winston Churchill as, "a blank check for totalitarian government."

What did Clement Attlee have to say about the remark? "One of his (Churchill's) less intelligent remarks."

Approved Fraternities

All fraternities have been approved for the entertainment of women guests tonight and tomorrow night except Kappa Alpha Psi, Sigma Chi and Phi Mu Delta.

Pi Lambda Phi, Pi Sigma Upsilon and Alpha Phi Alpha have been approved for tomorrow night only.

STUDENT FILMS

present

'TAP ROOTS'

VAN HEFLIN
SUSAN HAYWARD

SAT., FEB. 21 - 7:30 & 9:30

SUN., FEB. 22 6:30

HUB Assembly Room

Rain Predicted; Spring Continues

Relatively warm air covers the entire nation and thus the Nittany Lion can use his lighter clothing for several more days. However, he'll need a rain coat and rubbers by tonight if weather developments occur as expected.

The forecast calls for a temporary end to the bright sunny weather of the past two days, with cloudy and mild conditions predicted for today. Although a few light showers may occur today, heavier rain will move into University Park tonight. The rain will end tomorrow morning and be followed by cloudy and mild weather in the afternoon. Temperatures will climb to a mild 50 degrees today and fall to only 40 degrees tonight.

Chess Team Wins 6-0

Penn State's Intercollegiate Chess Team scored a 6-0 triumph over Dickinson College Sunday.

The victors were Bill Bickham, Jerry Eckman, Fred Shaffer, Tony Waraksa, Richard Somerville and Jerry Wetzel.

CATHAUM

Now - 1:30, 3:32, 5:27, 7:25, 9:30

"Rally Round The Flag Boys"

Paul Newman - Joanne Woodward
Joan Collins - Jack Carson

BEGINS WEDNESDAY

7 'Oscar' Nominations!

"SEPARATE TABLES"

NITTANY

NOW - DOORS OPEN 6:15

"Bridge on the River Kwai"

SATURDAY - ALL DAY

"TARGET ZERO"

Richard Conte - Peggy Castle

PLAYERS present



"THEATRE OMNIBUS"

featuring scenes from
"TIME OF YOUR LIFE"
"OEDYPUS THE KING"
"ARIA DA CARO"

and
JAPANESE KUBUKI DANCES

by
HISAKO MATSUBARI

Opening Friday, March 6
CENTER STAGE

Political Top Brass Will Hold Seminar

Pennsylvania's top political brass—Republican and Democrat—will gather at the University March 20-21 for an Editor's Seminar on "Pennsylvania Politics."

The seminar will feature the very top authorities on the state political scene with a speaker's list including U.S. Sen-

ators Joseph S. Clark and Hugh D. Scott, Governor David L. Lawrence, James S. Berger, state senate majority leader; Stephen McCann, house majority leader; George I. Bloom, Republican State chairman, and Joseph M. Barr, Democratic State chairman. President Eric A. Walker and four University professors will join with the state political leaders for panel discussions.

The sessions, sponsored by the Pennsylvania Society of Newspaper Editors and the University, will be held in Nittany Lion Inn.

A panel discussion on "Practical Politics" will open the seminar at 10 a.m. Friday, March 20. H. Eugene Goodwin, director of the School of Journalism, will be moderator.

Dr. Ruth V. Silva, professor of political science, will address the panel on "Political Trends in Pennsylvania." Barr and Bloom will talk on their respective parties' stands in state politics.

Clark will open the afternoon sessions with a speech on "Federal Municipal Relationships."

Frank N. Hawkins, associate editor of the Pittsburgh Post-Gazette, will moderate a panel at 2:30 p.m. on "Political Issues:

Taxes, Constitutional Revision, Education"

The panel will include Dr. David Kurtzman, assistant director and director of research for the Pennsylvania Economy League, Inc.; Dr. Nelson McGeary, head of the Department of Political Science, Dean John R. Rackley, of the College of Education; Berger and McCann.

Lawrence will speak at a banquet at 7 p.m. on the topic "Politics and Government Do Mix."

A Saturday panel will discuss "Politics Is Everybody's Business." R. Wallace Brewster, professor of political science, will moderate. Panel members will be Norman W. Seip, manager of Erie Relations and Utilities Operation of General Electric Company; Emery Bacon, educational director of United Steel Workers of America; Henry W. Lark, Northumberland County Republican chairman, and Walker.

Scott will address the closing luncheon at 12:15 p.m. He will speak on "The Trials and Tribulations of a Vote-Seeker."

FRI., MARCH 13

IFC-PANHEL BALL

featuring

Les & Larry Elgart

Rec Hall 9 to 1

\$5.00 per couple

semi-formal

ROLLER SKATE



Every Wed., Fri. & Sun.

7:30 to 10:30 p.m. E.S.T.

Also Sun. afternoons 2-4 E.S.T.

We RENT Chicago Shoes Skates

HECLA PARK

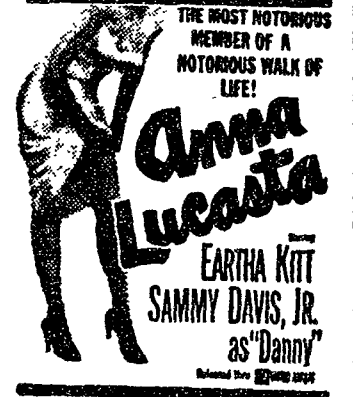
18 miles East of State College Rt. 64

Rink Available for Private Parties

Phone Zton - FULTON 3-2318

STATE NOW

Feat. 1:30, 3:32, 5:34, 7:36, 9:38



WMAJ

6:30	Sign On
6:32	Morning Show
6:38	Morning Devotions
6:45	News Headlines
6:47	Morning Show
11:00	News
11:05	Swap Shop
11:15	Classical Interlude
12:00	Music at Noon
12:15	County News
12:20	What's Going On
12:35	Music Show
1:00	News and Sports
1:15	Contact
5:00	Local News
5:05	LP's and Show Tunes
5:30	News
5:35	LP's and Show Tunes
5:55	News and Markets
6:15	Sports Special
6:30	LP's and Show Tunes
7:00	Fulton Lewis Jr.
7:15	LP's and Show Tunes
7:45	Public Service Program
8:00	News
8:05	WDFM Programs
10:00	News
10:05	Groovology
11:00	News
11:05	Sports
11:10	Groovology
12:00	News and Sports

Dinners Served Nightly...

Tanglewood Acres

Steaks Spaghetti Lobster
Shrimp Pizza Sandwiches

Selected Beverages

For Reservations Call
Elgin 5-4584

DANCING

NO MINORS

Jacksonville Rd. -- 4 1/2 Miles From Bellefonte

Lobster House

720 S. Atherton St.
State College



OPEN 5 TIL 9 P.M. DAILY

SUNDAYS, 12 TIL 6 P.M.

CLOSED MONDAYS

RESERVATIONS - CALL 8-3092