

# IFCPA to Hold First Food Fair

By TOM EGGLE

Do you know what to look for in a prime rib roast, in a lamb or a pork cut?

If not, perhaps you can learn Monday afternoon or evening.

The Interfraternity Council Purchasing Association will

hold a food fair to introduce new food products and new food preparation methods Monday in the Maple Room and the cafeteria of the Home Economics Building.

Approximately 15 companies will have displays at the demonstration which will be held from 2 to 5 p.m. and from 7 to 9 p.m. And the displays will be more than just something to look at. You will also be able to sample products from each display!

Such companies as General Mills, Pet Milk and Vinco Macaroni Co. will have displays so you'll be able to sample everything from dried milk products and cake mixes to spaghetti and macaroni.

The food demonstration is being held to show how IFCPA can help fraternities plan their food purchases. Fraternity caterers, house mothers, cooks and University food service personnel have been personally invited to attend; however, anyone interested in IFCPA or new food products have been extended a welcome, according to Mrs. Ruth Arnold, manager of IFCPA.

Plans for the food demonstration were started last spring when IFCPA members started discussing the possibilities of such a demonstration. For the past month the plans have been going into effect as arrangements with various companies were made.

IFCPA, a non-profit buying organization for fraternities, was started nearly two years ago in September 1957. At present, 27 fraternities purchase through the IFCPA program, although all fraternities are members.

In the evening a movie produced by Swift and Co., on meat cuts and purchasing will be shown so if you want to learn how to judge meat cuts here's your chance.

And if you don't have a way to get to the demonstration you can solve your problem by calling AD 8-8541 on Monday morning. According to Mrs. Mary Wilson, assistant manager of IFCPA, four cars will be available for transportation during the hours that the fair is being held.

# Visiting Prof Services to Observe To Talk On World Prayer Day U.S. Negro

Dr. Leon E. Wright of the School of Religion, Howard University, will speak on "The American Negro in World Perspective" at 2 p.m. tomorrow in the Memorial Lounge of the Helen Eakin Eisenhower Chapel.

The lecture, sponsored by the members of Entre Nous, is being



DR. LEON WRIGHT

presented in observance of Negro History Week.

Wright is a professor of New Testament languages and literature at Howard, and is an instructor in New Testament Greek at the Protestant Episcopal Theological Seminary in Alexandria, Va.

He served as cultural attache at the American Embassy in Rangoon, Burma, from 1955 to 1957. He has lectured several times on interracial affairs in the Washington D.C. area.

Wright was graduated from Boston University with Phi Beta Kappa honors and received his Ph.D. from Harvard University in 1945.

Among his academic awards are the Rosenwald Fellowship, the Fellowship of the National Council on Religion in Higher Education, the General Education Board Fellowship and a Guggenheim Fellowship.

An ecumenical service for student and faculty members of all denominations will be held at 4:30 p.m. tomorrow at the Wesley Foundation in observance of the Universal Day of Prayer.

Dr. Leon Wright, professor of New Testament languages and literature at the Howard University School of Religion, will speak on "Science and Reality."

The members of the Presbyterian University Fellowship, the Wesley Foundation, and the United Student Fellowship will attend this service instead of having their usual meetings.

Participating in the service will be Selbourne C. Mvusi, graduate in art education from the Union of South Africa; Paul Thomas, graduate in fuel technology from India; and Betty Lu Floegel, junior in liberal arts from Silver Spring, Maryland. Miss Floegel is vice president of the University Christian Association student cabinet.

The Universal Day of Prayer is sponsored by the World Student Christian Federation, an international Protestant and Orthodox student organization, and will be observed in a similar manner on campuses throughout the northern hemisphere.

Traditionally, it is observed on the third Sunday in February.

The Rev. Hal Leiper, Protestant chaplain and associate director of the UCA, will speak at the Protestant service of worship at 9 a.m. tomorrow in the Helen Eakin Eisenhower Chapel.

In keeping with the Universal Day of Prayer, he will speak on "Intelligent Intercession."

The meditation chapel choir, directed by James Beach, will sing "Give Land Unto the Lord," by Ernest Bullock.

The Baptist Student Movement will meet for supper at 5:30 p.m. tomorrow at the University Baptist Church.

The B'nai B'rith Hillel Foundation will show three films on Modern Israel at 7:30 p.m. tomorrow.

One of these, a 20-minute color film, "Off the Beaten Track in Israel," is a travelogue through the less publicized parts of Israel. It includes scenes of Jerusalem, the Dead Sea and King Solomon's Mines.

"Religion in Israel," second in the series, is a film taken recently by Drew Pearson. In it Jewish, Christian and Moslem leaders are interviewed.

The final film is a newsreel depicting aspects of life in Israel.

## Rosen to Give Lecture On Political Philosophy

Dr. Stanley Rosen, assistant professor of philosophy, will speak at 7:15 p.m. tomorrow on "Political Philosophy: Conservation and Liberalism."

The talk, followed by a discussion period, is part of the discussion series held at the Graduate Students' Residence Hall. All faculty members, graduate students and their friends are invited to attend.

# Forms Due For Student Teaching

Applications for secondary student teaching assignments during the fall semester of 1959 must be filed not later than 4 p.m. Thursday.

Students enrolled in Education 52 this semester have been supplied with applications by their instructors, and directed to return them by Monday, Feb. 16. All others must submit personal applications to Miss Reed in 207 Burrowes on or before Thursday, Feb. 19.

Priorities for these applicants will be assigned on a space-available basis. Priority as to choice of assignment will be strictly in order of the time of their filing of an application.

Students included in this latter group are those who have previously applied for student teaching but who have failed to accept, or refused to accept, their previous assignments. They must reapply by the date set. This also applies to graduate students, special students or any other students desiring secondary student teaching assignments who are not currently enrolled in Education 52.

Indications are that more than twice as many will apply for student teaching assignments for the fall of 1959 as were given assignments in the fall of 1958. This anticipated increase in the number of applicants will necessitate the establishment and organization of at least three new student teaching centers. Adherence to a strict priority policy in assignment will be essential.

## Education Crisis Answer:

# State-Wide Campus System Planned

By CATHY FLECK

Last of a Series: "State of the University"

The University is planning to meet future educational crises through a single state-wide system of higher education operating under uniform academic and financial policies.

Last month, the Board of Trustees approved the establishment of a system of Commonwealth campuses and authorized three methods for expanding this system. These methods will be:

- Establishing new campuses in response to demonstrated needs.

- Joining with other colleges and universities in the cooperative development of educational programs.


- Contracting on a partnership basis with local school districts for the management and operation of campuses wherever and whenever possible.

President Eric A. Walker's "State of the University" report said that such a plan, if carried out, will provide the state with a sound, logical and relatively inexpensive mechanism for meeting the educational crises it will face.

This system provides each campus with the administrative and academic stability of a great state university. As a component of the University, each campus, includ-

ing those which might be established in the future, is fully accredited by the Middle States Association.

The total experience and resources of the University will be available to all units of the system of Commonwealth campuses. As operating units of a state university, the separate campuses will definitely offer only post-high school, collegiate work.



**Classified Ad Staff**

**MEETING**

SUNDAY EVENING, FEBRUARY 15

7 p.m., Main Office

Attendance Important!

## Who?

is eligible for the Collegian Business Staffs (advertising, promotion, circulation, classified, or credit)?

# Any Student

with a 2.0 average. You need not be a Journalism or Business major. All interested students are requested to meet . . .

**Tuesday, February 24**  
131 Temporary  
6:30 p.m.

# Service To Demonstrate Brotherhood

In observance of National Brotherhood Week, the University Chapel service of worship will feature a combined service of the Jewish and Christian traditions at 10:55 a.m. tomorrow in Schwab Auditorium.

Rabbi Benjamin M. Kahn, director of the B'nai B'rith Hillel Foundation, will serve as worship leader for the Jewish service and Charles E. Minneman, assistant University chaplain, will serve as worship leader for the Christian service.

The meditation will be given by the Rev. Preston N. Williams, assistant University chaplain. Dr. Luther H. Harshbarger, University chaplain and co-ordinator of religious affairs, will commentate the service as it is broadcast over WMAJ.

The combined Hillel and Chapel choirs, directed by Willa Taylor, will sing as the choral introit, "Sing a Song of Joy" by Thomas Campion; "En Kelohenu," a traditional hymn of the Jewish tradition; and "The Lord Bless You and Keep You," by Peter Lutkin.

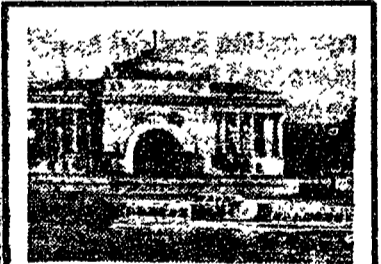
George E. Ceiga, University organist, will play as prelude, "Psalm Prelude" by Herbert Howells; as offertory, "De Profundis" by Jean Langlais; and as postlude, "Grand Choeur Dialogue" by Eugene Gigout.

## Language Courses Offered by Hillel

The Hillel Foundation is offering four language courses to be given on a one-hour-a-week, non-credit basis.

The courses will be given at the Foundation and are as follows: Beginner's Hebrew, Wednesday at 6:30; Intermediate I, Thursday at 7 p.m.; Intermediate II, Wednesday at 7:15 p.m.; and Yiddish, Thursday at 7 p.m.

Classes will begin next week and anyone may attend without registration.




### Student tours to Russia!

72 day tours including Europe and a month in Russia, for students, young instructors, graduates. Departures: June 14, 21, and 28. \$1697 complete.

**MAUPINTOUR Motorcoach Tours.** 18 days, departing from Helsinki or Warsaw every week May 21 through September 3, \$519.

**MAUPINTOUR Luxury Sailings.** 9 departures aboard the Queen Mary and Elizabeth, April through September, from \$2105.



**University Travel Bureau, Inc.**  
108 W. College Ave.  
State College Hotel AD 8-8778

•Louetta Neusbaum  
•Josephine Götting  
•Elizabeth Harrod