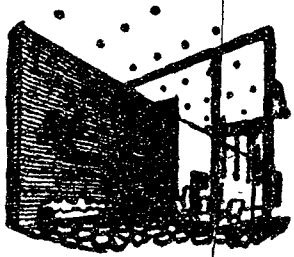


Gymnasts to Host W. Va. Tomorrow

West Virginia's gymnasts get the second—and last—crack at a "weak" Penn State squad at 8 tomorrow night in Recreation Hall. The match appears to be a lull before the storm.



Through the Looking Glass

with Gabbi

Wow— just came through that mess called registration. What. Section 14 is closed? But I have to get in Section 14. I can't? Well, heh-heh, I don't really mind 8:00 o'clocks on Saturdays. Present number 4 card—present number 5 card—present all cards. I hope your registration went a little smoother than mine. If it didn't, I have a perfect balm for jangled nerves. Namely, dropping in to Ethel's for a few minutes this week.

A very special day is coming up. You know, Valentines Day. Ethel has stocked up on Valentines of every shape and size. You're sure to find one to express your sentiments exactly. How about— "I like the little things about you (open) your looks, money, brains." I'm especially partial to romantic ones like— "Please be my valentine, nobody else will."

To show that special man in your life that you are thinking of him, buy a hand loomed Tucker tie. These are made of fine Indian silk in designs of stripes of muted colors. Ethel has also imported belts to match in the same color combinations. In the same department are Scarab cuff links in browns and greens offering a contrast to the pastels of the tie and belt combinations.

What is more dear to a young coed's heart than perfume and jewelry? Just a sniff of Diorama by Christian Dior is enough to sell anyone. Mr. Dior has also been considerate enough to manufacture a purse size container handy for traveling. Now to that other heart-warming subject. With a mind to Feb. 14, Ethel has a lovely red hrinestone pin in the shape of a heart just right to hold your silk scarfs in place.

From England come compacts in both flower and figure designs. These would make a thoughtful gift for any occasion.

Hope to see you soon. At Ethel's, of course.

Ethel Meserve



IN MY BOOK this is TOPS!

KEELER'S Self-Service Shopping

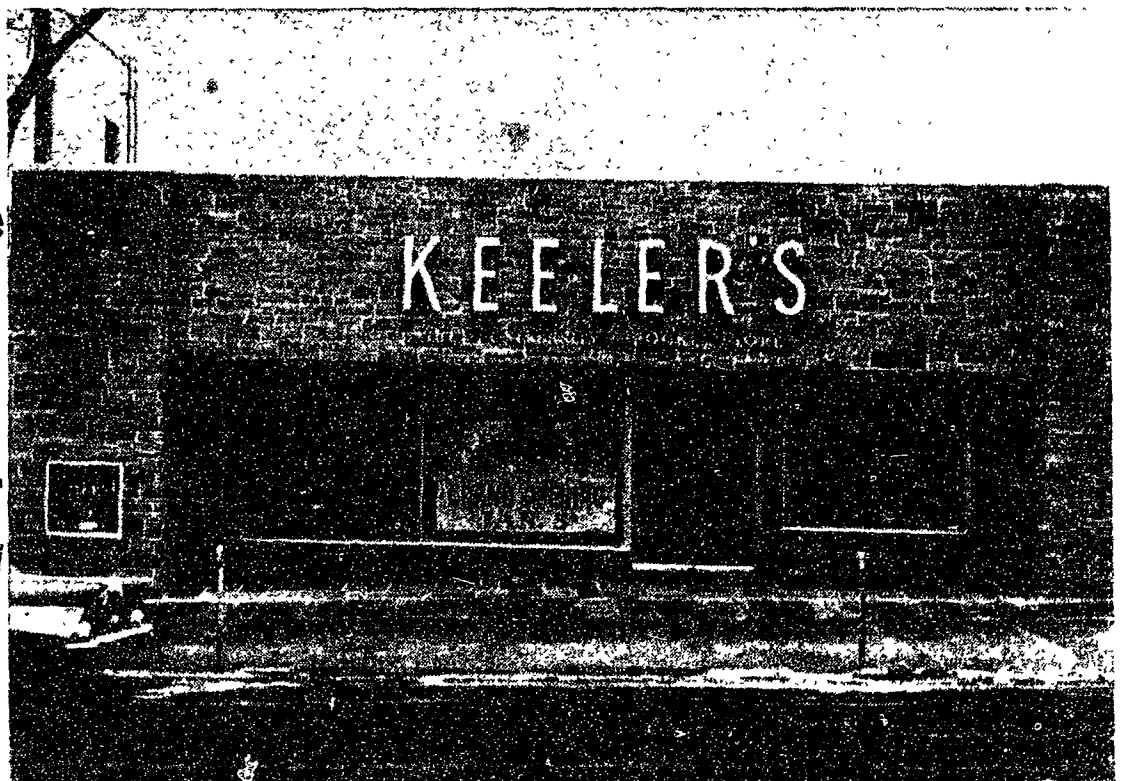
All current semester textbooks are available at Keeler's Self-Service Department located downstairs. Self-Service shopping will save you valuable time now and next week.

Our complete line of engineering supplies include slide rules by Post, K&E, and Deitzgen. A full line of artist materials awaits you by Keeler's new store.

Since you'll be shopping for student supplies, come and see our usual complete line including Smith Corona Portable Typewriters.

OPEN 8 a.m. UNTIL 9 p.m. TONIGHT

For your added shopping convenience our new store will be open from 8 a.m. until 9 p.m. Monday through Friday of next week.



The New KEELER'S . . . The University Bookstore

206 East College Avenue . . . opposite the East Campus Gate

Serving Penn State Students Since 1926