

Interlandia Festival To Feature Dancers

Michael and Mary Ann Herman, called two of the nation's foremost folk dancers, will serve as guest instructors at a 3-day folk festival today, tomorrow and Saturday sponsored by the Interlandia Folk Dancers.

The festival will open at 4 p.m. today with a folk dance workshop in the Extension Conference Center. The Hermans will be in charge.

Folk dance sessions open to the public will be held from 8:30 to 11 tonight and from 7:30 to 11 p.m. tomorrow in the Hetzel Union ballroom and from 8 p.m. to 12 midnight Saturday in the Junior High School on Frazier Street.

No admission charge will be made tonight and tomorrow. Admission will be 50 cents Saturday night and refreshments will be served.

The Hermans will lead the dancing each night. The New Bavarian Schuhplattlers, Hawaiian dancers Millicent Lum and Charlene Wong, and Spanish dancer Andrea Norman, all University students, will perform their specialties at the various sessions. Exhibitions of dancing, singing, folk art and costumes from Czechoslovakia, Spain, Hawaii, Germany, Ghana, Israel, India, the Philippines, Indonesia, Ireland, the Near East, Japan and Yugoslavia will be displayed.

Herman, who got his start as a boy fiddler at dances for the Ukrainian community in his native Cleveland, became leader of a folk dance group when moved to New York City. He directed open folk dancing for visitors to the World's Fair, and eventually es-

ablished his own school in the city.

He and his wife, Mary Ann, operate Folk Dance House in New York City. Recently they entertained the Moiseyev folk dance group from Russia and had the Soviet dancers stepping lively to square dances and New England contras.

The Hermans have also taught folk dancing in Japan, having been sent there by the State Department.

Sponsoring the festival, which will constitute one segment of the University's 11th annual recreation conference, is the Interlandia Folk Dancers, a student-faculty organization which promotes folk dancing on the campus throughout the year.

Chairman Requests 'Awards' Tickets

Persons who sold Awards Night tickets have been asked to return unsold tickets and money to the Associated Student Affairs office, 202 Hetzel Union.

Daniel Keiner, awards chairman, said students will be held responsible for making good unsold tickets unless they are returned.

Radioactivity Measured By Physicist

Measurable levels of radioactive fall-out in the Central Pennsylvania area were recorded during the 1957 nuclear tests in the western part of the country by Edward Kenny, University health physicist, it was announced last week.

Kenny, who has been monitoring fall-out for nearly a year, said the amount of fall-out measured during that time is insignificant as a health hazard.

His charts of daily measurements show sharp increases in radioactivity following each of the tests last summer, the increase beginning within two days of the test. Increases in radioactivity were also noted on rainy days, probably indicating that active particles are cleared from the atmosphere by the rainfall, Kenny said.

The heaviest fall-out recorded was noted on September 10, 1957, when 12,828 disintegrations a minute of radioactive particles were registered. A light rainfall also was recorded on this date, which undoubtedly helped to cause the sharp increase in fall-out.

This measurement also followed nuclear explosions in the western part of the United States on August 30 through September 7.

Playhouse to Give World Premieres

The Standing Stone Summer Playhouse, recently acquired by the University as a laboratory for theatre arts students, will premiere five short plays by William Inge, former Pulitzer Prize and Critics Circle Award winner.

The playhouse, located in the mountains at Neff's Mills near Petersburg, will present the world premiere of the plays from July 28 to Aug. 2.

A version of the longest of the plays, "Glory in the Flower," was presented on "Omnibus" television show five years ago.

The other plays, classed as "vignettes," are "Sounds of Triumph," "To Bobolink for Her Spirit," "The Tiny Closet" and "Memory of Summer."

The five plays will be directed by Max Fischer of the American Theatre Wing staff who has been appointed resident director of the playhouse.

Inge is author of "Dark at the Top of the Stairs," which is playing before full houses at the Music Box in New York City.

Inge is now engaged in three other writing projects, one a screen story; the second, a novel entitled "The Friends of Galahad," and the third, a serious, full-length play entitled "Bus Riley's Back in Town."

The 8-week summer season will open June 23 at the playhouse. The playhouse, which is a converted barn, was first opened in 1951 by an amateur company and continued in 1952 but was disbanded part-way through the season. In 1953, the playhouse was again started by a professional company which continued each summer until last year.

Catholic Chaplain To Conduct Mass

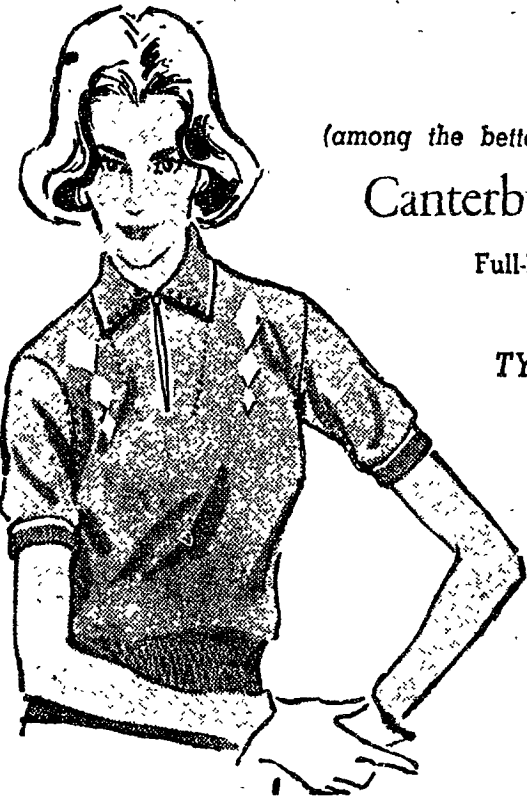
The Rev. Gerard J. Ream, Roman Catholic chaplain, will conduct Mass at 4:30 p.m. today in the Eisenhower Chapel.

The Mass is being conducted as one of a series of vesper services representing the religious traditions on campus.

Record Sales Continue
A new group of specials at \$1.19 plus other bargains
SHADLE ASSOCIATES
151 S. Allen

WHAT

To Get for a Mother's Day Gift??



(among the better things)

Canterbury

Full-Fashioned

in

TYCORA

Canterbury full-fashioned sweaters with intarsia designs, woven right into them. True gems of sweaters that you'd never expect to find at this price. In Tycora to wash and wear with lasting shapeliness without ever losing their soft, luxury look. Sizes 34-40.

OR have you thought of...

Lingerie, Blouses, Gloves, Nyons, Scarfs?

Smart Shop

123 S. Allen Street

You'll

LOVE

the LOW "New York" Prices

The FILM LAB'S

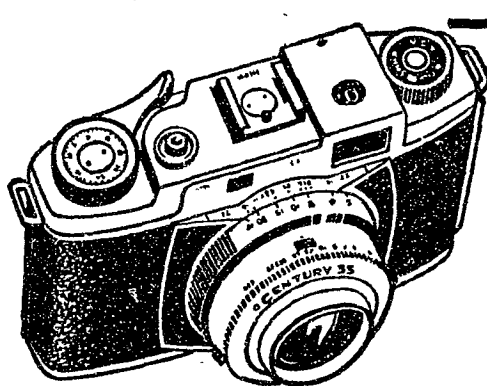
GRAND OPENING

MAY 5

UNTIL

MAY 10

OPEN 9 a.m. to 9 p.m.



GRAFLEX CENTURY 35

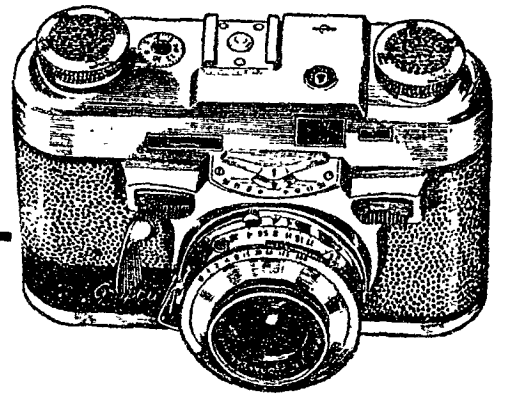
One stroke; rapid wind film advance. Shutter speeds up to 1/500—

Fast Action—Simple Operation and Wonderful Color Slides

National Resale Price—\$4.50—

During GRAND OPENING

YOU PAY ONLY **\$49.50**



GRAPHIC 35

Quick, Sure, PUSH-BUTTON FOCUSING

- Spectramatic Flash Settings
- E-Z Set Snapshot Settings
- Built-in Self Timer
- Crystal Sharp 2.8 Lens for Sparkling Color Slides
- All Metal Construction—No Cracks or Chips

No Longer \$87.50

But a LOW

\$59.59

CENTRE COUNTY FILM LAB

106 WEST BEAVER AVENUE