



—Daily Collegian Photo by Martin Scherr

SITTING IN THE MIDST of her court is a happy new queen, Ginger Ottinger, Miss Penn State 1958. Her court includes (l-r); Ellen Donovan, Annette Agnèr, Sybil Kersh, and Dorothy Lentz.

Thespians Plan New York Trip

Thespians will send five seniors on a 3-day, all-expense paid trip to New York City, May 31 to June 2.

They are: Stuart Kahan, arts and letters major from Philadelphia; Barbara Kinnick, education major from Danboro; Phyllis Rubinstein, Spanish major from York; James Jimmiro, arts and letters major from Abington; and William DeLaney, electrical engineering major from Wilmington, Del.

Included on the tour are tickets to "West Side Story," "The Music Man," "L'il Abner" and the Ed Sullivan Show, and a complete backstage tour of Radio City Music Hall.

The trip is awarded annually to five outstanding seniors by the Thespian Board of Control.

Chaperones will be Mr. and Mrs. Ray T. Fortunato. Fortunato is the club's adviser.

IM Horseshoes Entries Due

Entries for the Intramural horse shoes-doubles tournament are due at the IM office in Rec Hall by Tuesday.

Journ Society Plans Initiation, Dinner Sunday

Sigma Delta Chi, men's professional journalism fraternity, will hold its annual banquet at 6:15 p.m. Sunday in the Penn State Room of the Nittany Lion Inn following initiation ceremonies.

Six professional men will be initiated into the fraternity. They are Joseph D. Shatto, editorial page editor of the Sharon Herald; Kenneth D. Rhone, editor of Grit; Edwin R. Patrick, editor and publisher of the Forest Press, Tionesta; Norman Eberly, associate professor of agriculture extension and Lee W. Stauffer, publisher of the Danville News.

The undergraduates who will be initiated are Dennis Malick, William Jaffe, Donald Thompson, Robert Reese, Robert Thompson and Warren Carmichael.

A panel discussion on the fraternity's 1958 theme "Fight Secrecy. Inform the People," will be held following the banquet. John Paget, head of the Harrisburg International News Service bureau and president of the central Pennsylvania chapter of Sigma Delta Chi, will moderate the discussion.

Blue Key, Androcles Blanks Due Tomorrow

Applications for Blue Key and Androcles, junior men's hat societies, must be filled out by noon tomorrow in the dean of men's office.

Blue Key is open to fourth semester men, and Androcles is open to fourth and fifth semester men. Applicants must have at least a 2.0 all-University average.

Art Historian to Present French Painting Lecture

Dr. Grose Evans, art historian and associate curator in charge of educational work, National Gallery of Art, Washington, D.C., will give an illustrated lecture on French painting in the National Gallery at 8:00 tonight in the Hetzel Union auditorium.

The lecture is free and open to the public.

Job Interviews

U.S. Army Environmental Health Laboratory: May 5: Jr. & Sr.: CHE, San E. CE.

Shakespeare Revival Joined by Players

The Penn State Players' production of the "The Merchant of Venice" is part of a general Shakespearean revival in the theaters of the country, according to Gilbert Aberg, director of the University's motion picture studio and the play's stage manager.

The play, which will be presented May 8, 9, and 10 in Schwab Auditorium, is a comedy with tragic overtones, Aberg said.

He said the Shakespearean revival is particularly strong in summer repertoire theatres.

The theatrical style of a Shakespearean play, in contrast with the realistic style of many contemporary plays, creates a number of problems, he said. Most of the show's actors have had little experience playing Shakespeare, Aberg said.

The actors will try to preserve the line and meter of Shakespearean verse, he said, without destroying the meaning of the words.

Several characters must be acted with a great deal of style, Aberg said. These include a clown

and a couple of "fabulous" princes. Shylock is a highly stylized and serious character and must be acted somewhat differently, he said.

There are few stage directions as such in the play, but they are contained in the lines themselves, Aberg added. Lines tell the audience some things a set might show in a modern play.

Sixteenth century music will be used in the show. Musicians will play instruments such as the lute and the virginal, a small spinet popular in the sixteenth and seventeenth centuries.

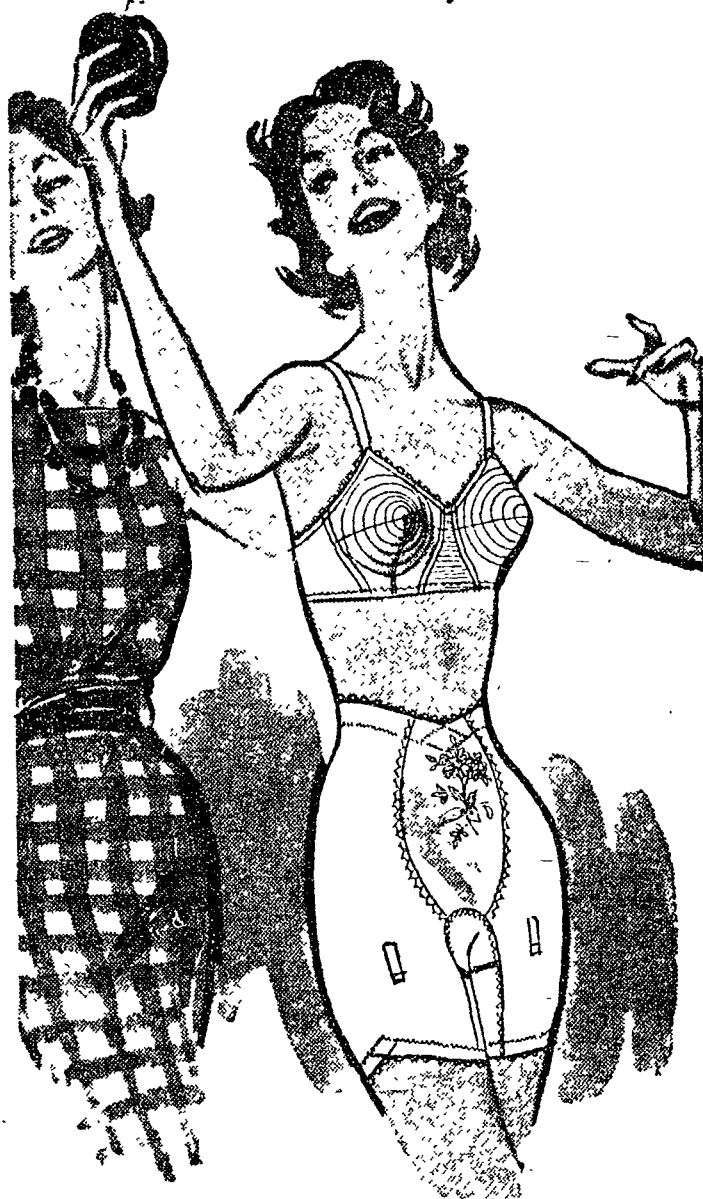
Tickets will go on sale Monday at the Hetzel Union desk. They will also be sold at the door.



SPRING means FASHION

...and FASHION means

Formfit



Bermuda shorts, slacks, slim skirts were designed with a straight, slim line in mind. "Skippies" long-leg pantie No. 859 does fashion a favor by shaping a trim line. Lightweight elastic gently molds thighs and hips. Satin elastic panels front and back give extra control. Waistline style dips in front, gives you freedom to move, stretch, bend. Legs and waist lined with plush-back elastic that feels comfortable next to your skin. White. S. M. L. XL. Ask for \$7.95 long-leg Skippies No. 859.

"Romance" Bra No. 566. "Nylo-Braid" circle-stitched cups for lasting uplift. \$2.00 White cotton. 32A to 38C.

Russell Stover Candies

...remember Mother with the finest.

Mother's Day Sunday, May 11

ASSORTED CHOCOLATES
Creams, nuts, fruits, chewies, crunches
1 lb. box \$135 2 lb. box \$260

THE GIFT BOX Chocolates and butter buns
1 1/2 lb. gift \$2 2 1/4 lb. gift \$3

The finest, freshest candies you can buy... exclusively ours

She means so much to you!
Tell her so on
SUNDAY, MAY 11
with

Hallmark
MOTHER'S DAY CARDS

BILL McMULLEN FLORIST
130 E. College Opposite Old Main

Griggs Pharmacy
120 E. College Ave.
opposite Old Main

Dankes & Co