

Indonesia Army Captures City From Rebels

SINGAPORE (AP)—President Sukarno's Indonesian army claimed Monday it had regained control of the airport and harbor at Medan in North Sumatra and that insurgents had withdrawn from the strategic city.

The claim was called false by the rebel radio at Padang in Central Sumatra, which Sunday announced capture of the island's largest city by troops who mutinied against the Sukarno regime.

The city has a population of 300,000.

A Medan broadcast supported the government announcement of recapture of the city. Neither the Medan broadcast nor the Jakarta government announcement gave any details.

Although the rebels disputed the government claims they appeared convinced that Maj. Boyke Nainn Golan and the one mutinying government claims, they apous battalion he led against the government Sunday could not hold the city long.

Satellite 'Shamrock I'
WASHINGTON (AP)—Being St. Patrick's Day, Rep. William H. Eates (R-Mass) has a name for the new U.S. satellite: "Shamrock I."

This is Value!

Only \$.50
for one
insertion
in
COLLEGIAN CLASSIFIEDS

TIME PRECIOUS?

And how! Every year you postpone the start on a planned life insurance program, it's costing you cold cash in higher premiums. It's smart business to check the advantage of the Personal Planning Service with your campus representative—now, while you are insurable.

Campus Office
227 W. Beaver Ave.
AD 8-9421

PROVIDENT MUTUAL
Life Insurance Company
of Philadelphia

For Good Results---Collegian Classifieds

1958 GRADUATE ENGINEERS

Here are the opportunities you have been seeking! Investigate our top salaries and excellent management opportunities that prepare you for technical and administrative responsibilities.

- Electrical Engineering
- Research and Development
- Quality Control
- Industrial Engineering
- Equipment and Plant Maintenance
- Power
- Coke and By-Products Manufacturing
- Steel Production
- Plant Engineering
- Field Construction

Become a member of our future management team. On March 27th and 28th, our representative will be on your campus. Contact Mr. D. M. Cook, University Placement Service, for an appointment.

INLAND STEEL COMPANY
East Chicago, Indiana

Delta Sigma Pi to Meet
Delta Sigma Pi, professional business fraternity, will hold a pledging meeting at 7:30 tonight at Phi Sigma Kappa.

CLASSIFIED

ADS MUST BE IN BY 11:00 a.m. THE PRECEDING DAY
RATES—17 words or less:
\$0.50 One insertion
\$0.75 Two insertions
\$1.00 Three insertions
Additional words 3 for .05 for each day of insertion

FOR SALE

1951 DODGE hardtop. Must sell—\$125.00. Bill Gauger AD 8-2066.

LIQUIDATING 1950 Chevy convertible, unrestorable Model-A; restorable 1931 Cadillac V-12. Marty Alperstein ext. 2228 evenings AD 8-0266 or AD 7-2251.

1951 MERCURY four-door; radio, heater and Mercos Jet. Need money. No reasonable offer refused. AD 7-2941, Barry.

FOR RENT

FURNISHED EFFICIENCY Apartment—conveniently located; ideal for graduate or undergraduate couple. AD 7-7792 or AD 8-6727.

LARGE SINGLE room for male graduate or 12 month student. Modern home, private entrance. Call AD 7-7661.

SINGLE OR double room for rent at 420 South Bush. Call AD 8-6013.

LOST

WILL FELLOW who picked up wrong gray tweed overcoat at Placement Service in Old Main March 11 call AD 7-4951. I have yours.

BROWN OVERNIGHT bag containing cornet and bongo drums. Lost Friday 14 near Willard Hall. Call S. Ross AD 7-2926.

REWARD FOR black panther last seen Atherton area with Caesar. Answers to Leslie. Call Ron Kule, ext. 2880.

LARGE SCARAB bracelet March 14—finder please contact Anne 1523 J. Reward.

SMALL BROWN purse near Chi Phi or Cooper Hall. Please call ext. 1335J.

WILL PERSON who picked up wrong topcoat from rack outside Room 6 Sparks, March 4 call AD 8-6066. I have yours.

WILL FELLOW who picked up wrong Alligator coat at Pi Kappa Alpha Satellite call ext. 3346. I have yours!

WANTED

GIRL TO share apartment for remainder of semester. Very convenient to campus. AD 7-2966.

JOB INTERVIEW 3 to 5 Thursday March 20 at ATM office for busboy and waiters for Club Hubanna.

RIDE OF 3 girls to Southern Florida Easter vacation. Call Bonnie, Babs or Chill ext. 851.

FOR NEAT fast accurate typing of all kinds call AD 7-7478 after 5:30 p.m.

RIDERS TO Miami, Florida over spring vacation. Call Will AD 8-8441 ext. 2268.

RIDES FOR two to Pittsburgh Friday March 21. Can leave at 5 p.m.; return Sunday. Please call ext 1048.

MISCELLANEOUS

IN NEED of a jazz dance combo for IFC weekend* Phone Jack ext. 3073. Very reasonable rates.

YOUTH CAMPS of Philadelphia YMCA will interview men and women for counselor jobs Thurs. Mar. 20. Sign up at 112 Old Main.

HOME ECONOMICS Students: Have you nominated yourself for student council yet? Nominations close at 5 p.m. tomorrow.

DUE TO a booking discrepancy the Don Smaltz Sextet is available this Saturday afternoon and evening March 22. Call AD 8-0018.

GALS - Don't wait 'till the last minute to get those gowns and things cleaned for big weekend. See your SDCA agent in Redifer, Simmons, McElwain, Atherton and Grange.

LOCAL REPAIR Service on all makes of typewriters. We will call for and deliver your typewriter Nittany Office Equipment. AD 8-6122.



Research Engineer Robert A. Thorpe, like many other engineers, mathematicians and physicists, came to IBM directly from college. Here he describes how he put his E. E. degree to work in the exciting new area of computer technology.

What's it like to be with IBM?

"I joined IBM for two reasons," Robert Thorpe recalls. "First, the tremendous company growth obviously offered every chance for advancement. Second, the area of work was exactly what I was looking for—transistors and their application to computer systems."

In June, 1955, Bob Thorpe decided to enter the IBM training program, where he studied the corporate structure, its Divisions and products. He received technical training in computer logic, programming, and components such as transistors, cores and tapes. By September, half his time was being devoted to an actual project; by the following March, he was on that project full time. "Our job was to transistorize six servo-amplifiers for the airborne bombing-navigational system," he recalls, "and we completed the project in April."

In Research (as in all of IBM), he works in a small group. "Our team consists of three E. E.'s and a technician. We start with an analysis of the over-all system and its components. Then we use modern design techniques involving the latest devices to implement the system." His group splits up occasionally to investigate special phases of a project but reunites in frequent sessions to coordinate their research activities.

Promoted to Associate Engineer



The "small-group" approach to research

In August, 1956, he was promoted to Associate Engineer. At that time he had been working on a design and development project for a D. C. sweep-restoring system for transistorized airborne radar data presentation. He worked on this project until it was completed in May, 1957.

Bob Thorpe was next assigned to the Circuit Logic Department. Here, he was concerned with research in new areas of computer technology—for example, magnetic logic and semi-conductor circuit components and systems which operate in "real time."

Recently, a "Process Control Technology Group" has been organized within the Circuit Logic Department. "Our primary function in this group," Bob Thorpe says, "is to study sampled-data systems for application to industrial process control. This work is theoretical and involves mathematical studies of representative systems and processes."

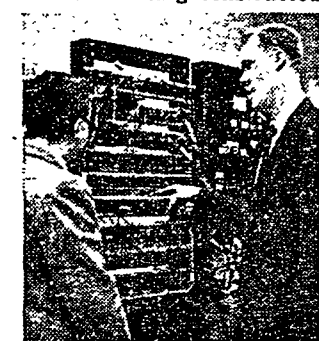
What does the future hold?

Bob Thorpe plans to continue in systems work and to develop "a more sophisticated approach to the analysis and synthesis of sampled-data control systems."

As his career develops, he can advance to still more challenging projects of a scientific nature or he can assume managerial responsibilities combining administrative and scientific talents. Either way, the future is open. IBM Research is expanding enormously at the present time. A new Research Center is being constructed in Westchester County, N. Y., which will be the world headquarters for all IBM research centers in this country and Europe.



Testing amplifier performance



New area of computer technology

The fact that he is so much on his own, Bob Thorpe says, is what he likes best about IBM. "There's no 'over-the-shoulder' supervision. You schedule your own program and set your own pace."

This profile is just one example of what it's like to be with IBM. There are many other excellent opportunities for well-qualified college men in Research, Development, Manufacturing, Sales and Applied Science. Why not ask your College Placement Director when IBM will next interview on your campus? Or, for information about how your degree will fit you for an IBM career, just write to:

Mr. R. A. Whitehorse
IBM Corp., Dept. 813
590 Madison Avenue
New York 22, N. Y.



DATA PROCESSING • ELECTRIC TYPEWRITERS • MILITARY PRODUCTS
SPECIAL ENGINEERING PRODUCTS • SUPPLIES • TIME EQUIPMENT