

*Especially for Coeds*

# Chemise Finds Favor In Variety of Styles

The chemise or sack dress which started out as an innovation shocking to both sexes has settled down into a very ladylike fashion.

The most extreme chemise, which gives that straight up and down look and leaves a lot to the imagination, has been a smashing success on the woman with the boyish figure.

## New Style Leads To More Diets

At about this time of the year when the leading fashion magazines are featuring resort wear and the "latest" for spring, the coed dreamily envisions herself in a smart chemise, or bouffant skirted gown at Senior Ball.

She is rudely awakened by the next few pages of the magazine dealing with the most recent word on diets, and the secrets to the perfect figure for these luscious fashions. Panic!

The first considers skipping meals altogether, but gives this up as a weak idea. She takes the magazine's advice to heart and begins counting calories. None of these miracle diets for her; she is going to do it the sensible way.

The secret is: Balance what you eat against the energy you burn. The medically tested and proved diets are based on charts of height, bone structure and normal activity. They generally provide a full, well-balanced diet, low on starchy foods.

For two weeks the coed cuts down on calorie-heavy desserts and takes the "long cut" to classes to get in that extra bit of exercise. But all is lost when the dime drops in the telephone to order a large pizza with mushrooms.

The chemise is worn shorter than last year's dresses and the newest thing is to wear long beads and pointed-toe shoes as accessories.

For the woman who isn't most flattered by the extreme chemise, there are the modified versions which are also very much in style. The sack dress with the belted back has been especially popular because it gives the "chemise look" but isn't quite so extreme. Another variation is the dress with the slightly fitted waistline.

If the chemise just isn't your cup of tea, there are other ways to be fashionable. The fitted sheath is still with us and is extremely popular because it looks well on nearly every type of figure.

This year's sheath is worn slightly shorter and looks best when worn with a sash and matching wrap—a short jacket or long, straight coat. This season's coats follow straight, narrow lines with the exception of the reefer which makes a slow curve in at the waist.

The figure with a long waist and not-long legs is flattered by over-blouses and middies worn with short, pleated skirts. For the short-waisted figure the newest fashion is the pleated skirt worn with a tweedy waist-length jacket.

Whatever the styles this season, the most-desired color seems to be ice blue. It appeared in every fabric from wool to silk and went to every event from football games to fancy dress balls.



The Modified Chemise —by Gail Smith

## Engagements

### Savard-Dolecki

Mr. and Mrs. Allan Savard of Titusville have announced the engagement of their daughter, Carol Jane to Donald H. Dolecki, son of Mr. and Mrs. Henry J. Dolecki of Oil City.

Miss Savard attended the University and is employed as society editor of the Titusville Herald. Dolecki, a member of Sigma Chi, is a senior in civil engineering.

### Showalter-Hartman

Harry M. Showalter of Pennsauken, N.J., has announced the engagement of his daughter Bonnie to Harrison A. Hartman Jr., son of Mrs. Harrison A. Hartman of Clarion.

Miss Showalter is a senior in business education and a member of Alpha Xi Delta sorority.

*off the cuff*

# Popular Demand—Sack the Sack

*by christina*

Take two yards of cloth, fold the material in half, sew a seam down each side, cut holes for the neck and arms, and PRESTO—a sack dress.

The newest style in women's clothes may not be made in quite this fashion, but results are about the same: one shapeless garment. Any fit in the finished product is completely accidental—furnished by Mother Nature, rather than the dress manufacturer.

A few of the University's more daring coeds have purchased these creations and have worn them to fraternity parties. The results? Startled looks, long appraising stares, and then the members of the opposite sex sadly shake their heads and turn away.

A rather unfortunate feature of the dresses is their length, shorter than that of the standard sheath. For some reason, the skirt of the sack invariably creeps upward as the wearer ascends stairs. This situation can bring surprising results.

The modified sack dress, or chemise, is less of a monstrosity, although it certainly cannot be called enhancing to madame's figure. The chemise, with its semi-belted back, does hint that the feminine form includes a waist. Most males at least tolerate this style.

But, all in all, the general opinion seems to be apparent: sack the sack.

### Ewart-Yingling

Mr. and Mrs. John A. Ewart of Pittsburgh have announced the engagement of their daughter, Jean Maltby to Dr. Vernon Richard Yingling, son of Mr. and Mrs. H. Richard Yingling of Pittsburgh.

Miss Ewart is a junior in zoology and entomology, and is a counselor in Atherton dormitory. Dr. Yingling is a graduate of the University and the University of Pennsylvania School of Veterinary Medicine. He is now practicing veterinary medicine in Bellefonte. A June wedding is planned.

## Co-Edits

New officers of Alpha Xi Delta are Constance Jones, president; Patricia Miller, vice president; Elaine Mohny, recording secretary; Linda Hamer, corresponding secretary; Nancy Schane, treasurer; Barbara Bixler, rush chairman; Carol Dickson, pledge trainer, and Dorothy Spannuth, social chairman.

New officers of Kappa Alpha Theta are Mary Ann Gemmill, president; Barbara Blake, vice president; Sally Gardner, corresponding secretary; Ann Collesser, recording secretary; Lynn Ward, treasurer; Heather Lohrentz, rush chairman; Sybil Kersh, pledge trainer, and Rachel Milligan, social chairman.

New officers of Kappa Sigma are Richard Schlipp, president; Chester Zimolzak, vice president; Craig Kauffman, grand master of ceremonies; Alan Norman, secretary; Larry Byers, treasurer; Ronald Goodling and Chester Blank, guards.

Hi Sweethearts  
send or give  
YOURS

one of our beautiful  
valentines filled with  
delicious home-made  
candy.

Candy Cane  
128 W. College



EVEN SNOW and driving wind didn't discourage Ann Bowman, sophomore in home economics from Johnstown; and Mary Ann First, junior in hotel administration from Harrisburg. The two appear to be building a large snow rabbit.

## What? Jam Session

When? Saturday Afternoon 2:30 - 4:30

Where? THE SKELLER, of course

Who? Don Smaltz Dixieland

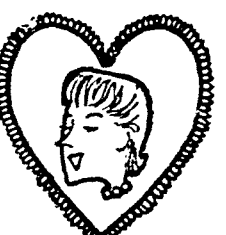
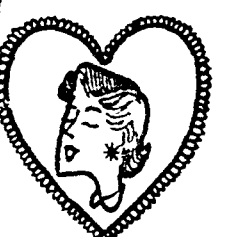
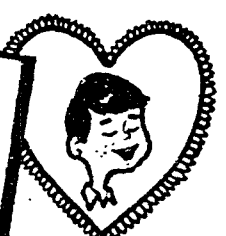
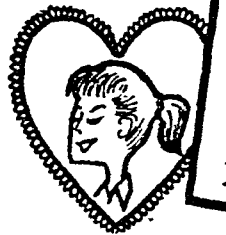
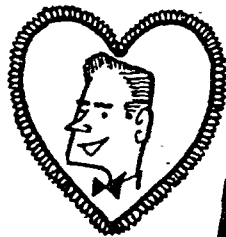
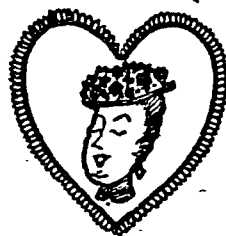
Do you know that we serve delicious steaks and chops every nite from 5:00 - 7:30?

— PLUS —

"Spider's Daily Special"

# We have Hallmark Valentines for everyone on your list!

This convenient list will help you remember all your Valentines in one trip. Bring this list with you when you shop from our complete selection.



- Relative
  - Mother
  - Father
  - Wife
  - Husband
  - Sister, Sister & Husband
  - Brother, Brother & Wife
  - Daughter, Daughter & Husband
  - Son, Son and Wife
  - Grandmother
  - Grandfather
  - Granddaughter
  - Grandson
  - Cousin
  - Nephew
  - Niece
  - Aunt
  - Uncle
  - From All of Us
- Special Titles
  - Across the Miles
  - Anniversary
  - Valentine Birthday
  - Valentine Cheer
  - Boy Friend
  - Girl Friend
  - Sweetheart
  - Honey
  - Darling
  - Someone Dear
  - With Love
  - Fine Folks
  - Special Friends
  - Secret Pal
  - From Both of Us
  - Our Wish
  - To Both of You
  - Money Enclosure
  - Teacher
- Assorted Valentines for Children
  - Penny Valentines
  - Lollipop Valentines
  - Cello Packs (Boys and girls)
  - Make-Your-Owns
  - Juvenile Boxed Assortment
- Individual Valentines for Children
  - Coin Cards
  - Boy
  - Girl
  - Baby's First
- For Your Valentine Gifts
  - Valentine Gift Wrap Paper
  - Valentine Ribbon
  - Heart Seals
  - Valentine Enclosures
- For Your Valentine Parties
  - Taffets
  - Place Card—Nut Cup
  - Party Silhouettes
  - Valentine Train Centerpieces

Hallmark  
Cards

"When you care enough to send the very best"

McLANAHAN'S

134 S. ALLEN ST.