

Calendar Changes

Trimester Plan Would Begin Year in July or Late August

By DAVE FINEMAN
First of a Series

During the next decade, thousands of graduating high school students will deluge the admissions office with requests for higher education.

To take care of these students, the University will have to begin full-time operations on a 12-month basis.

Three plans are being considered by the Senate Committee on Calendar to effect a 12-month school year—a trimester, a quarter and an extended summer session system.

A trimester system would involve breaking the calendar year into three equal terms.

Dr. David H. McKinley, assistant dean of the College of Business Administration, said in a report to the Senate that a trimester would have to be based on 16 weeks or less, owing to the need for four weeks a year for holidays and administrative breaks. These 16 weeks would include registration, instruction and examinations.

Both of the preferred starting dates for the trimester year—the beginning of July and late August or early September—have disadvantages, McKinley said.

The disadvantages he listed are: "School teachers will be unable to attend four months and will have to have their separate summer sessions anyway; the term would end in October when nobody wants a recess; high school graduates may be unwilling to start their college work a week or so after graduation; and the Division of Counseling needs time during the summer to process admittees.

"A late August or early September start involves collision with student jobs, vacations of families and Labor Day; ends well in December; is inconvenient for transfer students because of the January and May starting dates; and cannot be matched up with a roving Easter."

A trimester system lies between the other two proposals in amount of administrative and instructional retooling necessary, McKinley said.

The Senate agreed that any revision of the calendar would involve anywhere from simple to drastic changes in planned instruction. Professors used to lecturing 45 times during a semester may, under a revised calendar, have to adjust this schedule to a new number of class meetings.

Student opinion on this and the other two systems will be obtained through a survey which is being planned by Peter Fishburn, student member of the Calendar Committee.

Jones Raps Aid To Atomic Power

Donald C. Jones, professor and director of Mineral Industries Extension Services, said in a speech Tuesday before the Mt. Joy Rotary Club that the federal government should not subsidize commercial atomic power at the taxpayer's expense and to the damage of the markets of competitive fuels such as coal, oil, and gas.

Jones is a member of the speaker's bureau of the National Coal Association.

The finger ring was the only article of jewelry worn by the men of ancient Rome.

Sharp Fund--Freshmen Vote Anti-Rotation

(Continued from page one)
completely paralyzed from the neck down.

Sharp is undergoing general rehabilitation treatment now. An operation to remove the nerve block causing his paralysis is being considered, but the hope is that he will soon respond to the treatments so that the operation will not be necessary, Lecher said.

Recent campus contributions to the Sharp fund are:

•Sigma Tau, \$25; Lacrosse Club, \$20; Book Exchange, \$100; Nitany Council, \$25; Gamma Sigma Sigma, \$25; Geochemistry Department, \$10; Pollock 13, \$25; Hamilton Unit II, \$1; section of Speech 200, \$5.40; Pollock 9, \$10; Business Administration Student Council, \$25; and Alpha Delta Sigma, \$15.

Women's Chorus, \$50; Home Economics Club, \$5; Delta Zeta, \$28; McAllister Hall, \$17.50; Delphi, \$10; Collegian Inc., \$50; Cosmopolitan Club, \$5; Model Railroad Club, \$12; Kiwanis Club of Bellefonte, \$31; Alpha Delta Psi, \$20; and Phi Gamma Delta, \$11.97.

Recreation--

(Continued from page one)
opinion and studies of facilities, the two groups recorded the following findings:

•There are inadequate social and recreational opportunities, facilities and programs for students and faculty.

•Undue emphasis is being placed on the profit aspects of revenue producing activities to the detriment of students' welfare.

•Insufficient attention appears to have been given to the needs of special groups such as the faculty and the graduate and foreign students.

•An absence exists of a policy, long range planning and direction on the part of the University in social and recreational activities.

•There is a lack of responsible guidance, leadership and resource information to student groups.

Drive-in service stations for automobiles began in 1905. They also had an annex to shoe horses.

First in a series of four informative lectures on:

A Student's View of Europe
Speaker: Wayne Lippman

Where: Rooms 215, 216 HUB

When: Tonight—Thursday, February 6

Time: 7-9 p.m.

Elections Committee Retains Vote-Docking

All-University Elections Committee members voted 9 against and 4 in favor of a motion to abolish the vote-docking power of the committee Tuesday.

The committee discussed the penalization clause of the Elections Code at a meeting Tuesday night. Ruby Seaman,

chairman of a subcommittee appointed to study the clause, presented a report which asked that vote-docking be discontinued as a penalty for code infractions.

The report recommended that a sliding scale of fines be set up for specified offenses during elections. The report also suggested that the Elections Committee have the power to disqualify candidates.

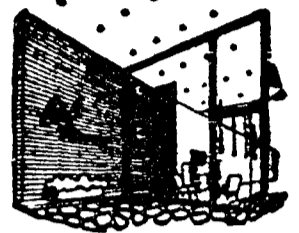
The penalization clause of the Elections Code states:

"In the case of violations of this code by an individual candidate or group of candidates, the Elections Committee may dock any number of votes it sees fit from each offending candidate. In the case of a violation by an entire clique, a fine of not more than \$25 shall be imposed on the offending political party. In addition to the monetary fine, the Elections Committee may, in extreme cases, impose a penalty on each candidate of the offending party."

A motion to table discussion on the penalty clause was defeated when it did not receive the necessary two-thirds vote of the committee.

When the motion to abolish vote-docking was defeated, Elections Committee Chairman Peter Fishburn said the vote could be interpreted as committee approval of retaining its power to dock votes.

Elections Committee will meet at 7:30 p.m. Wednesday in 219 Letzel Union. The penalty clause will again come up for discussion, Fishburn said.



Through the Looking Glass

with Jan

The new semester has finally arrived and has brought with it the not unusual scurry to classes, lines at the bookstores, registration woes and new students. To those of you who are among the new arrivals or to our old friends, a reminder that the complacent air surrounding the campus is immediately broken the moment you step through the looking glass at Ethel Meserve.

The Pleasure in

Love is . . .

in loving. What better way to express your deepest devotion than with a lovely valentine gift from Ethel's. Cuff-links, a jewel box or red homespun tie for the man in your life. For the femme-fatale, any one of the red or white gifts in the window would be perfect—jewelry, umbrella, handbag or belt. The cards to accompany these gifts are magnificent. Stop in and get yours today. Valentine's Day is a mere week away!

Something Old,

Something New . . .

Our leather cigarette cases are not old, they're the usual snap-lid kind, but they're so popular we keep restocking the same smart case. They come in luscious shades of red, white, black, green and blue, embossed with gold fleur-de-lis, for just \$2.50.

The newest innovation in cigarette cases, however, is a

Smoke Tote . . .

It's a small pouch of softest leather (drawstring kind) with a cigarette lighter attached by chain. You can use it not only for your cigarettes, but also for cards, lipstick, pencil, paper, bobby pins, and you-name-it! Just \$3.95 for this adorable case. Light Blue, Red, White, Black or Beige.

Remember through the looking glass is your own wonderland of gifts and gift ideas.

Ethel Meserve

112 E. COLLEGE AVE.

Thrill that Someone Special with FLOWERS on Valentine's Day

NO TELEGRAPH CHARGE IF ORDERED BY FEB. 8th

BILL McMULLEN
florist

130 East College Avenue
State College, Pennsylvania

AD7-4994

Bengus Music Service invites

ENGINEERS

- T-Squares
- Slide Rules
- Mechanical Drawing Sets
- Triangles and Curves Sets

We Give S & H Green Stamps

BENGUS MUSIC SERVICE

111 East Beaver Avenue, State College, Pa.

TODAY
February 6

There will be a representative of the STUDENT INSURANCE PROGRAM at the HUB desk to answer any questions* you may have concerning this program.
Time: 8 to 5

*If you intend to have an accident after September 10 of this year, wait for the next program!!